

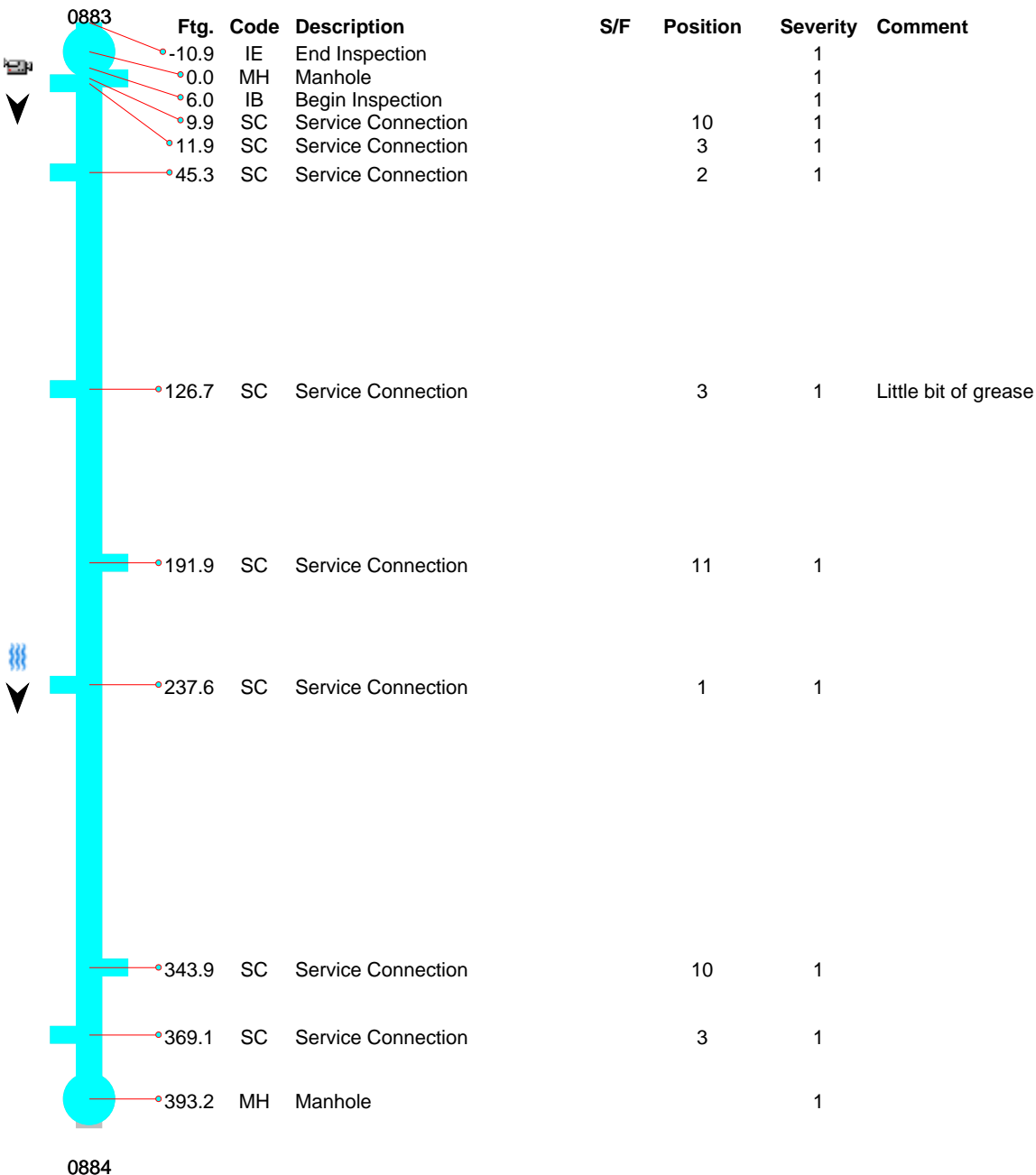


248 Railroad Drive  
Elk River, MN 55330  
Phone: 763-635-1170

<b>Owner</b> City of Elk River	<b>Pipe Number</b> P32	<b>Upstream MH</b> 0883	<b>Downstream MH</b> 0884	<b>Date</b> 09-Jun-2021
<b>Surveyor</b> Andy	<b>Street</b> Meadowvale/Concord		<b>City</b> Elk River	<b>Time</b> 9:04 AM
<b>Size</b> 8	<b>Material</b> PVC	<b>Sewer Use</b> Sanitary	<b>Purpose</b> Maintenance Related	<b>Length</b> 396.722 3
			<b>(TV'd)</b> 393.2	<b>Pre-Clean</b> Jetting
				<b>Weather</b> Dry

### Comments

Meadowvale inspection for replacement 6/9/21



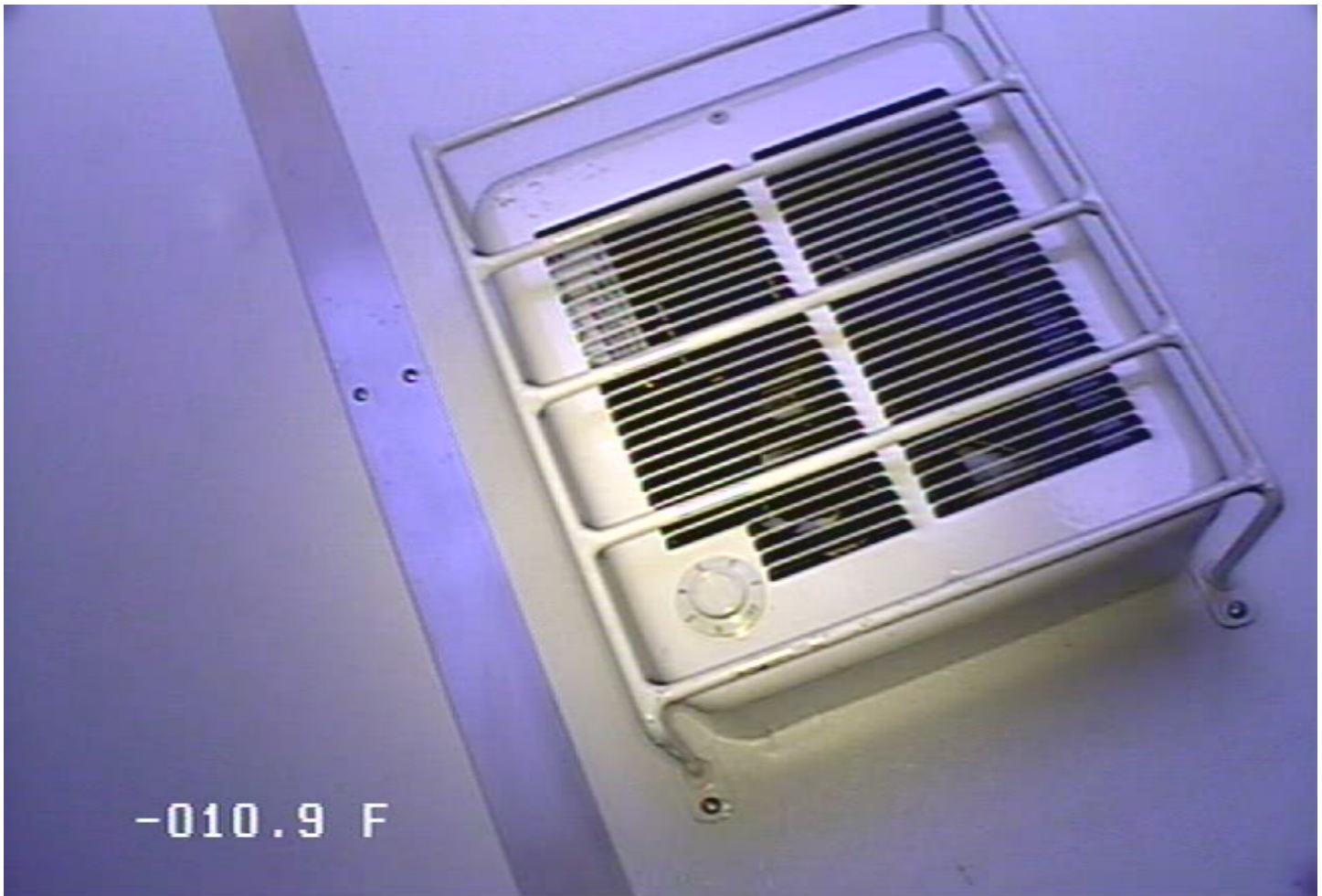


248 Railroad Drive  
Elk River, MN 55330  
Phone: 763-635-1170

<b>Owner</b>	<b>Pipe Number</b>	<b>Upstream MH</b>	<b>Downstream MH</b>	<b>Date</b>			
City of Elk River	P32	0883	0884	09-Jun-2021			
<b>Surveyor</b>	<b>Street</b>	<b>City</b>	<b>Time</b>				
Andy	Medowvale/Concord	Elk River	9:04 AM				
<b>Size</b>	<b>Material</b>	<b>Sewer Use</b>	<b>Purpose</b>	<b>Length</b>	<b>(TV'd)</b>	<b>Pre-Clean</b>	<b>Weather</b>
8	PVC	Sanitary	Maintenance Related	396.722 3	393.2	Jetting	Dry

**Comments**

Medowvale inspection for replacement 6/9/21



IE - End Inspection @ -10.9 ft.

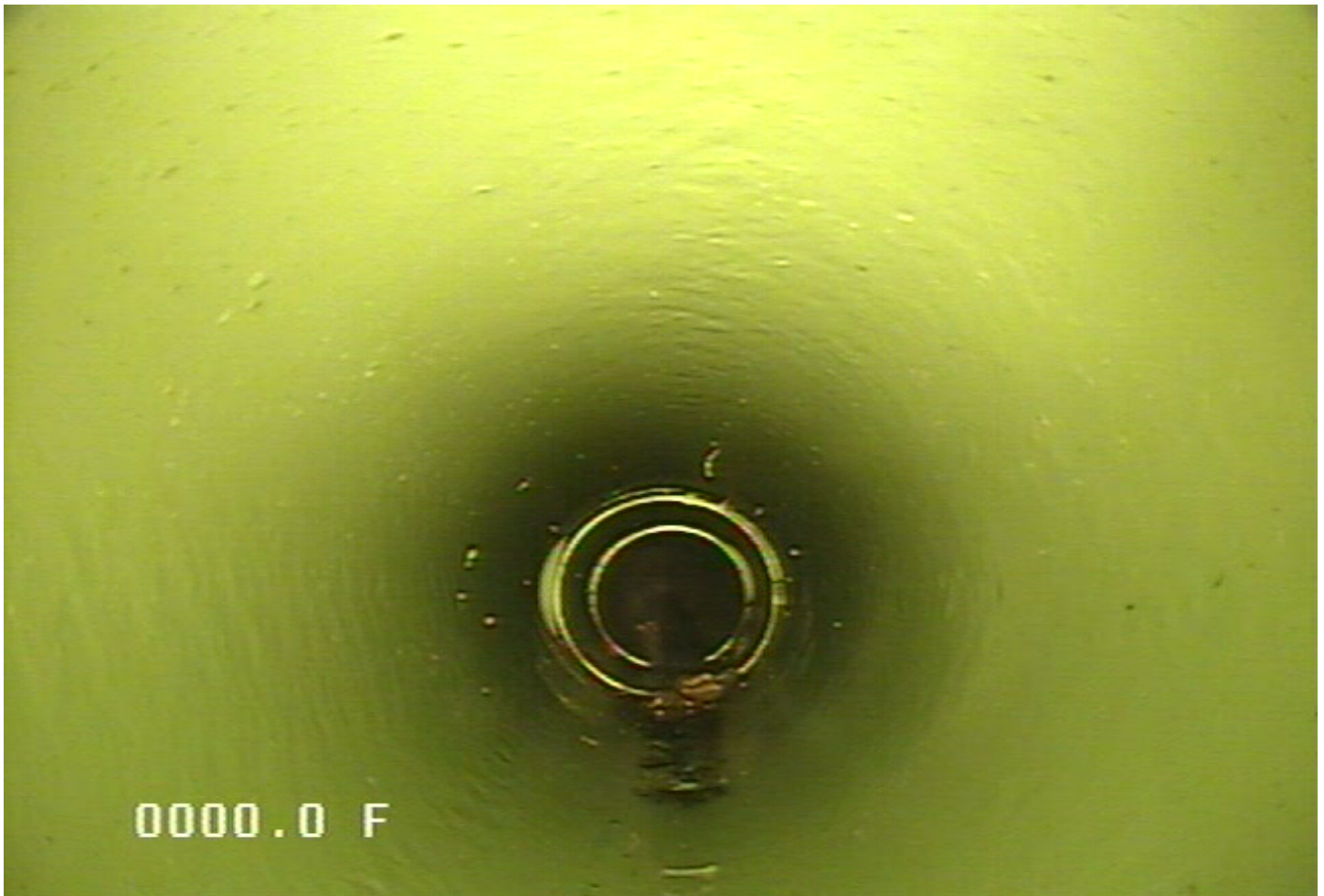


248 Railroad Drive  
Elk River, MN 55330  
Phone: 763-635-1170

<b>Owner</b>	<b>Pipe Number</b>	<b>Upstream MH</b>	<b>Downstream MH</b>	<b>Date</b>			
City of Elk River	P32	0883	0884	09-Jun-2021			
<b>Surveyor</b>	<b>Street</b>		<b>City</b>	<b>Time</b>			
Andy	Meadowvale/Concord		Elk River	9:04 AM			
<b>Size</b>	<b>Material</b>	<b>Sewer Use</b>	<b>Purpose</b>	<b>Length</b>	<b>(TV'd)</b>	<b>Pre-Clean</b>	<b>Weather</b>
8	PVC	Sanitary	Maintenance Related	396.722 3	393.2	Jetting	Dry

#### Comments

Meadowvale inspection for replacement 6/9/21



MH - Manhole @ 0.0 ft.

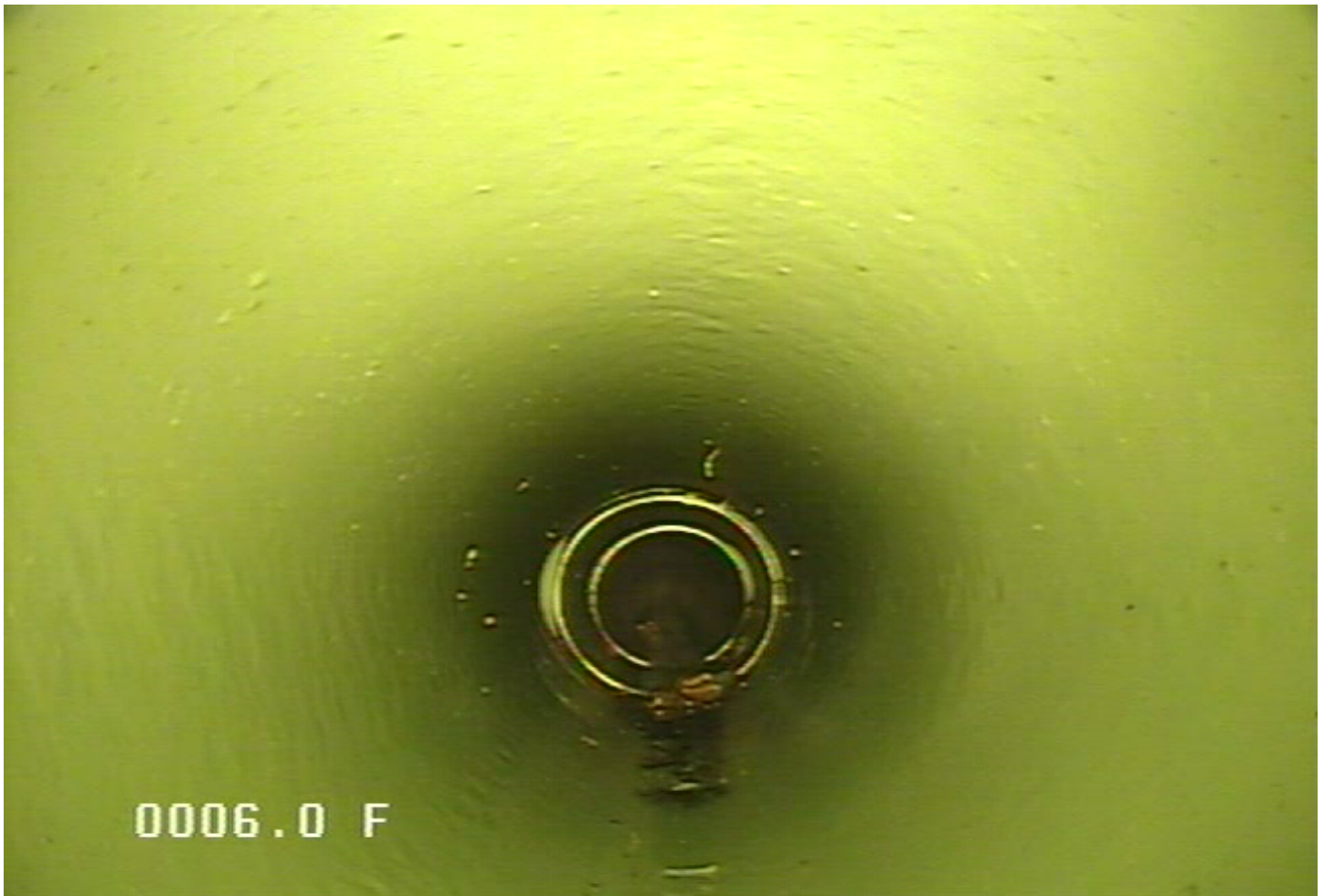


248 Railroad Drive  
Elk River, MN 55330  
Phone: 763-635-1170

<b>Owner</b> City of Elk River	<b>Pipe Number</b> P32	<b>Upstream MH</b> 0883	<b>Downstream MH</b> 0884	<b>Date</b> 09-Jun-2021			
<b>Surveyor</b> Andy	<b>Street</b> Meadowvale/Concord		<b>City</b> Elk River	<b>Time</b> 9:04 AM			
<b>Size</b> 8	<b>Material</b> PVC	<b>Sewer Use</b> Sanitary	<b>Purpose</b> Maintenance Related	<b>Length</b> 396.722 3	<b>(TV'd)</b> 393.2	<b>Pre-Clean</b> Jetting	<b>Weather</b> Dry

#### Comments

Meadowvale inspection for replacement 6/9/21



IB - Begin Inspection @ 6.0 ft.





248 Railroad Drive  
Elk River, MN 55330  
Phone: 763-635-1170

<b>Owner</b>	<b>Pipe Number</b>	<b>Upstream MH</b>	<b>Downstream MH</b>	<b>Date</b>			
City of Elk River	P32	0883	0884	09-Jun-2021			
<b>Surveyor</b>	<b>Street</b>		<b>City</b>	<b>Time</b>			
Andy	Meadowvale/Concord		Elk River	9:04 AM			
<b>Size</b>	<b>Material</b>	<b>Sewer Use</b>	<b>Purpose</b>	<b>Length</b>	<b>(TV'd)</b>	<b>Pre-Clean</b>	<b>Weather</b>
8	PVC	Sanitary	Maintenance Related	396.722 3	393.2	Jetting	Dry

**Comments**

Meadowvale inspection for replacement 6/9/21



SC - Service Connection @ 9.9 ft.

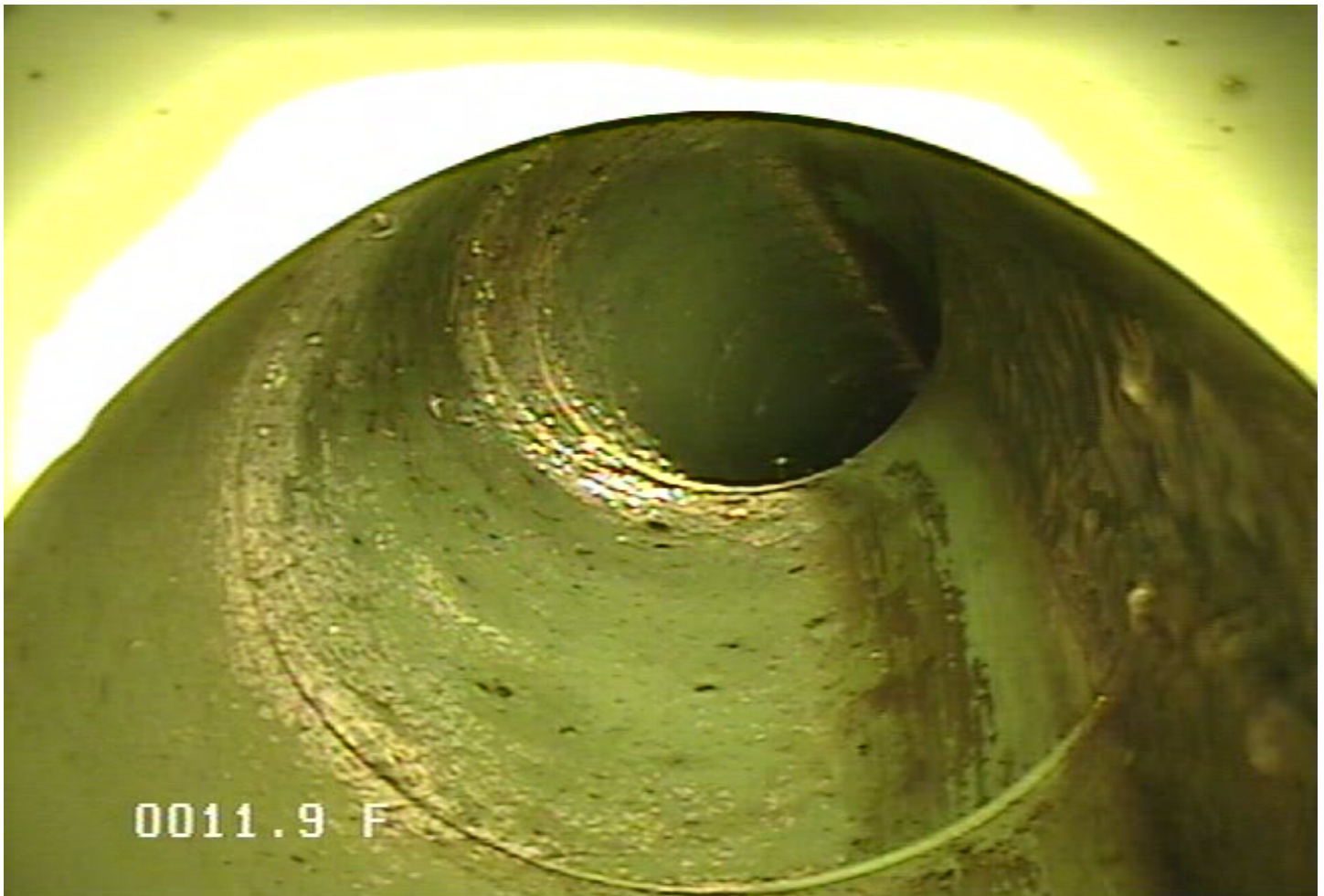


248 Railroad Drive  
Elk River, MN 55330  
Phone: 763-635-1170

<b>Owner</b> City of Elk River	<b>Pipe Number</b> P32	<b>Upstream MH</b> 0883	<b>Downstream MH</b> 0884	<b>Date</b> 09-Jun-2021			
<b>Surveyor</b> Andy	<b>Street</b> Meadowvale/Concord		<b>City</b> Elk River	<b>Time</b> 9:04 AM			
<b>Size</b> 8	<b>Material</b> PVC	<b>Sewer Use</b> Sanitary	<b>Purpose</b> Maintenance Related	<b>Length</b> 396.722 3	<b>(TV'd)</b> 393.2	<b>Pre-Clean</b> Jetting	<b>Weather</b> Dry

**Comments**

Meadowvale inspection for replacement 6/9/21



SC - Service Connection @ 11.9 ft.

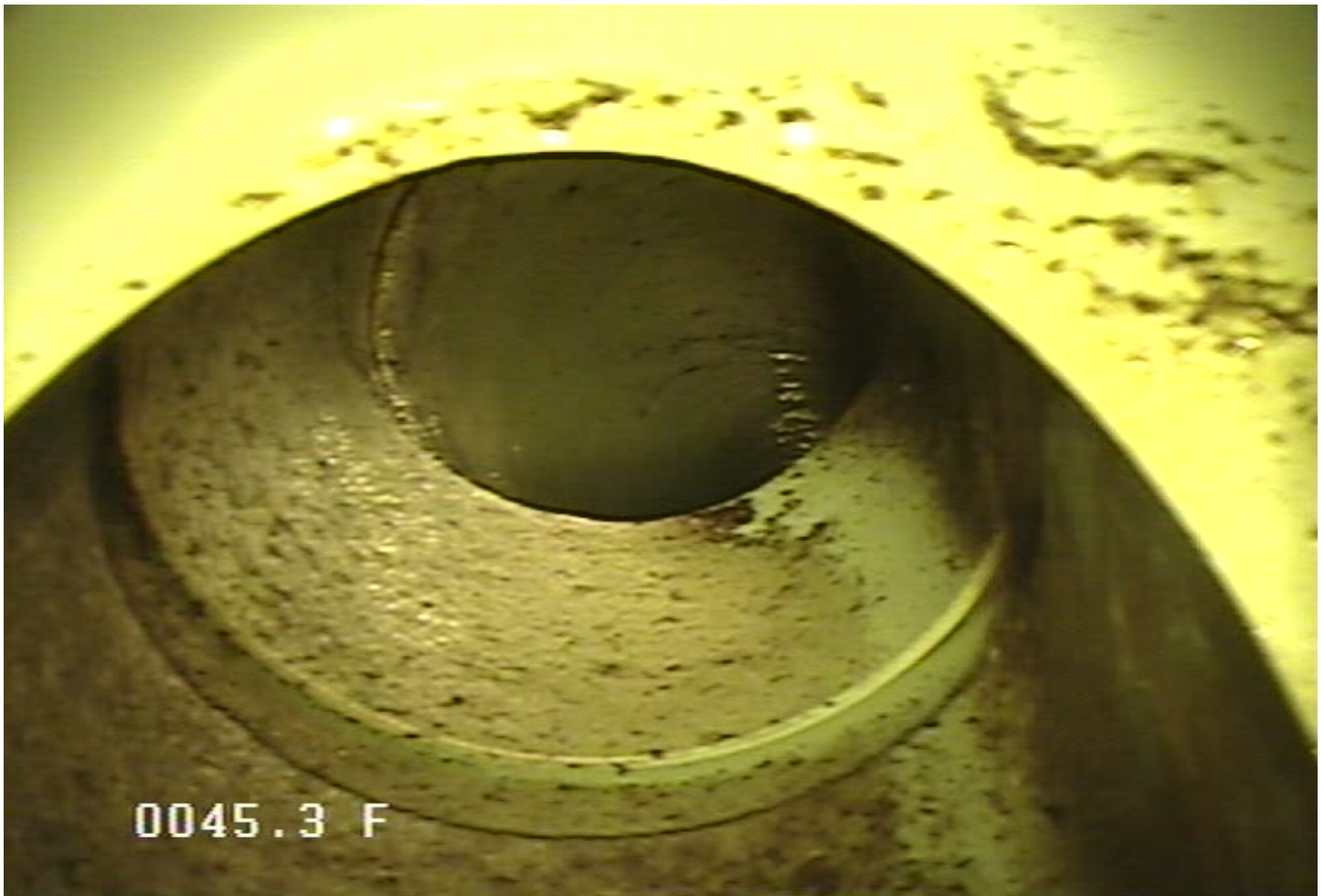


248 Railroad Drive  
Elk River, MN 55330  
Phone: 763-635-1170

<b>Owner</b>	<b>Pipe Number</b>	<b>Upstream MH</b>	<b>Downstream MH</b>	<b>Date</b>			
City of Elk River	P32	0883	0884	09-Jun-2021			
<b>Surveyor</b>	<b>Street</b>		<b>City</b>	<b>Time</b>			
Andy	Meadowvale/Concord		Elk River	9:04 AM			
<b>Size</b>	<b>Material</b>	<b>Sewer Use</b>	<b>Purpose</b>	<b>Length</b>	<b>(TV'd)</b>	<b>Pre-Clean</b>	<b>Weather</b>
8	PVC	Sanitary	Maintenance Related	396.722 3	393.2	Jetting	Dry

**Comments**

Meadowvale inspection for replacement 6/9/21



SC - Service Connection @ 45.3 ft.



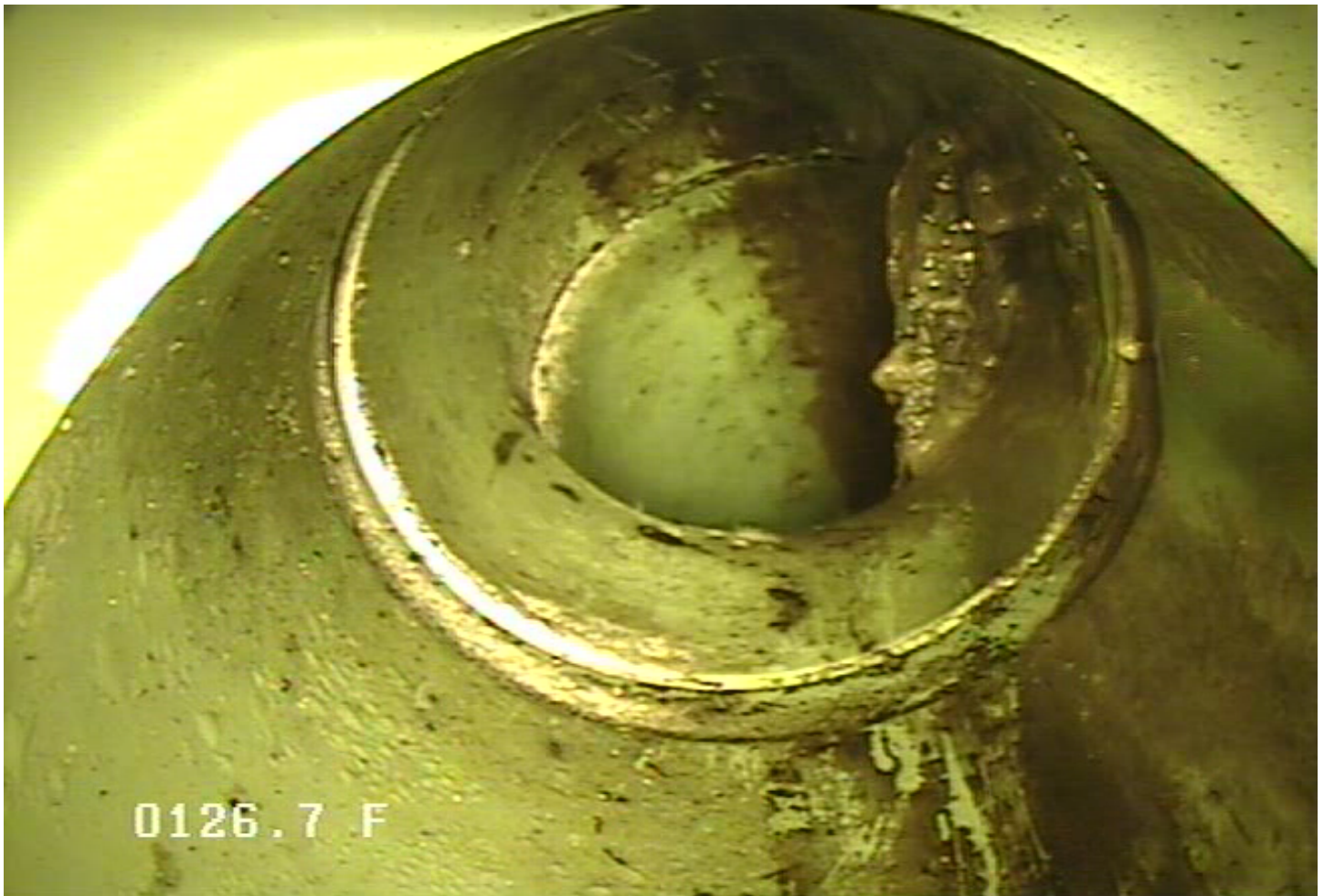


248 Railroad Drive  
Elk River, MN 55330  
Phone: 763-635-1170

<b>Owner</b>	<b>Pipe Number</b>	<b>Upstream MH</b>	<b>Downstream MH</b>	<b>Date</b>			
City of Elk River	P32	0883	0884	09-Jun-2021			
<b>Surveyor</b>	<b>Street</b>		<b>City</b>	<b>Time</b>			
Andy	Meadowvale/Concord		Elk River	9:04 AM			
<b>Size</b>	<b>Material</b>	<b>Sewer Use</b>	<b>Purpose</b>	<b>Length</b>	<b>(TV'd)</b>	<b>Pre-Clean</b>	<b>Weather</b>
8	PVC	Sanitary	Maintenance Related	396.722 3	393.2	Jetting	Dry

#### Comments

Meadowvale inspection for replacement 6/9/21



SC - Service Connection @ 126.7 ft. Little bit of grease



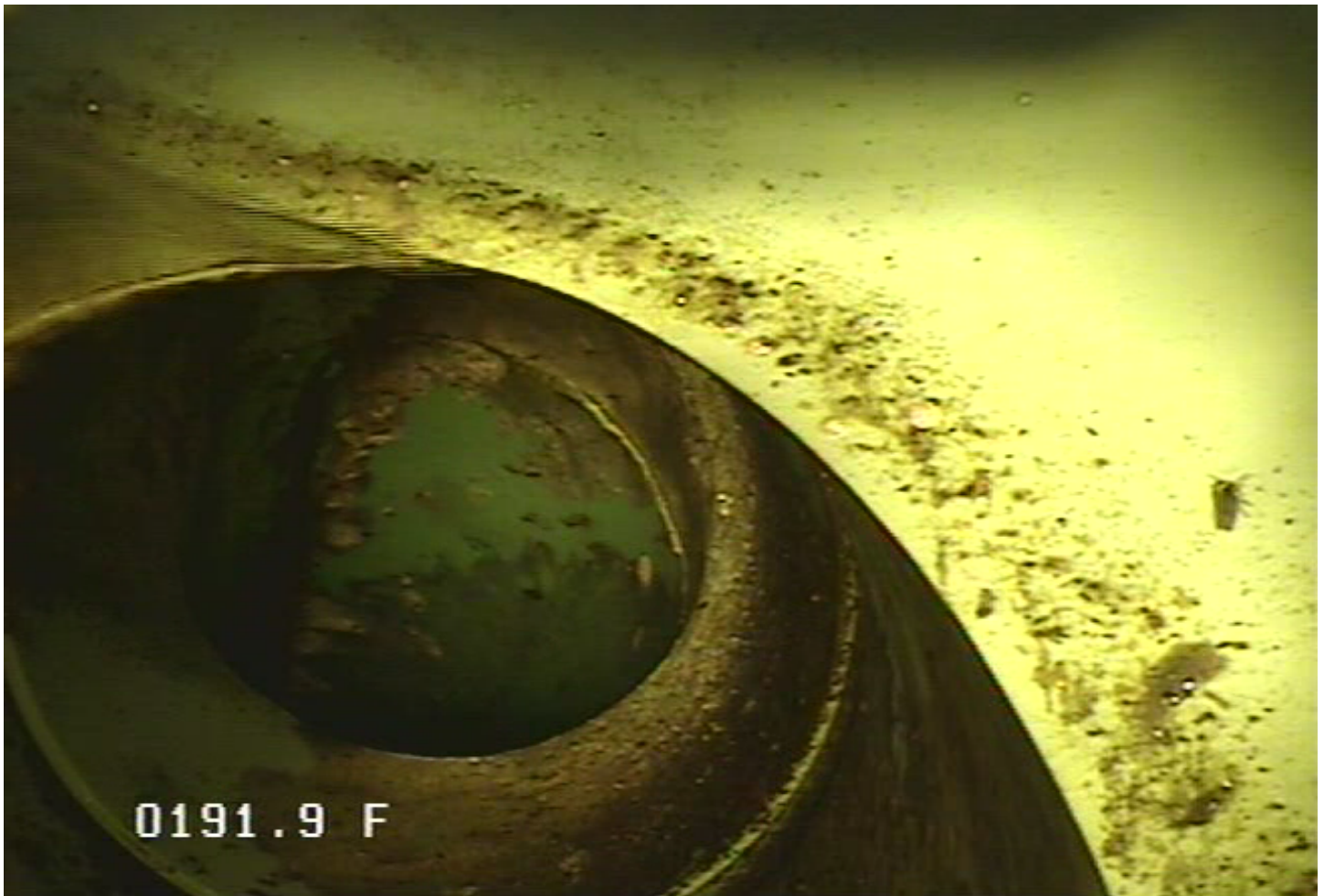


248 Railroad Drive  
Elk River, MN 55330  
Phone: 763-635-1170

<b>Owner</b>	<b>Pipe Number</b>	<b>Upstream MH</b>	<b>Downstream MH</b>	<b>Date</b>			
City of Elk River	P32	0883	0884	09-Jun-2021			
<b>Surveyor</b>	<b>Street</b>		<b>City</b>	<b>Time</b>			
Andy	Meadowvale/Concord		Elk River	9:04 AM			
<b>Size</b>	<b>Material</b>	<b>Sewer Use</b>	<b>Purpose</b>	<b>Length</b>	<b>(TV'd)</b>	<b>Pre-Clean</b>	<b>Weather</b>
8	PVC	Sanitary	Maintenance Related	396.722 3	393.2	Jetting	Dry

#### Comments

Meadowvale inspection for replacement 6/9/21



SC - Service Connection @ 191.9 ft.

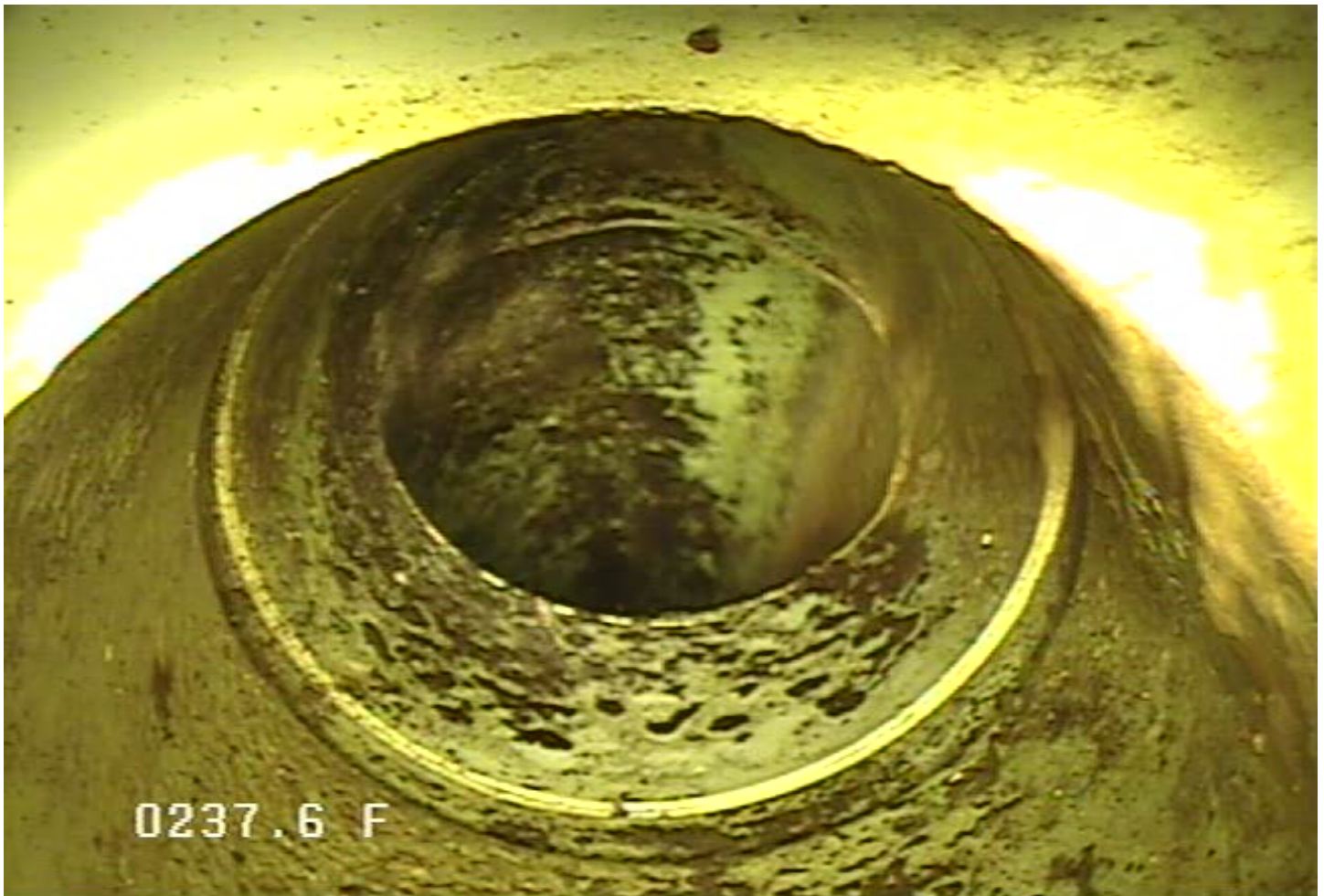


248 Railroad Drive  
Elk River, MN 55330  
Phone: 763-635-1170

<b>Owner</b>	<b>Pipe Number</b>	<b>Upstream MH</b>	<b>Downstream MH</b>	<b>Date</b>			
City of Elk River	P32	0883	0884	09-Jun-2021			
<b>Surveyor</b>	<b>Street</b>	<b>City</b>	<b>Time</b>				
Andy	Medowvale/Concord	Elk River	9:04 AM				
<b>Size</b>	<b>Material</b>	<b>Sewer Use</b>	<b>Purpose</b>	<b>Length</b>	<b>(TV'd)</b>	<b>Pre-Clean</b>	<b>Weather</b>
8	PVC	Sanitary	Maintenance Related	396.722 3	393.2	Jetting	Dry

**Comments**

Medowvale inspection for replacement 6/9/21



SC - Service Connection @ 237.6 ft.



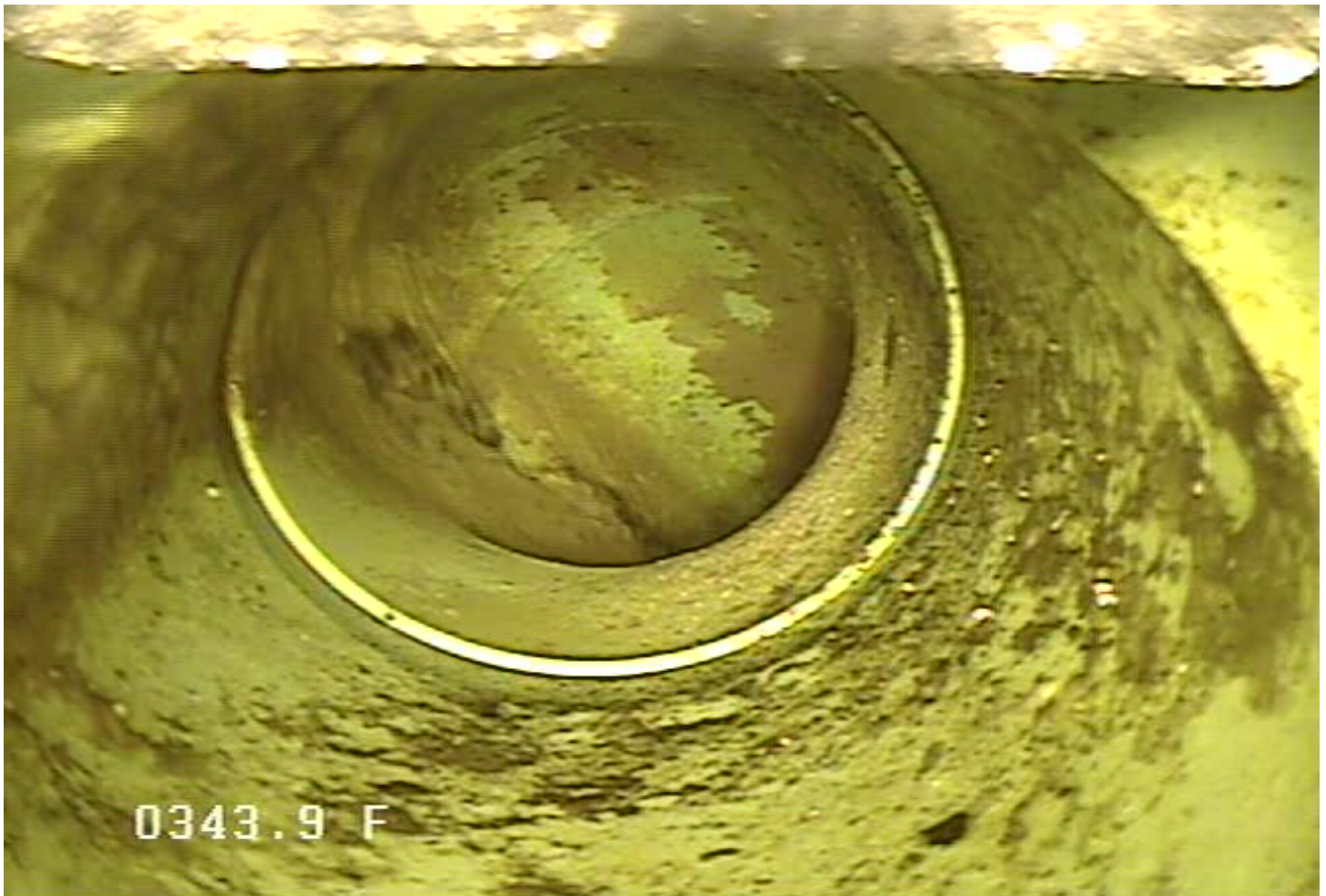


248 Railroad Drive  
Elk River, MN 55330  
Phone: 763-635-1170

<b>Owner</b> City of Elk River	<b>Pipe Number</b> P32	<b>Upstream MH</b> 0883	<b>Downstream MH</b> 0884	<b>Date</b> 09-Jun-2021
<b>Surveyor</b> Andy	<b>Street</b> Meadowvale/Concord		<b>City</b> Elk River	<b>Time</b> 9:04 AM
<b>Size</b> 8	<b>Material</b> PVC	<b>Sewer Use</b> Sanitary	<b>Purpose</b> Maintenance Related	<b>Length</b> 396.722 3
			<b>(TV'd)</b> 393.2	<b>Pre-Clean</b> Jetting
				<b>Weather</b> Dry

**Comments**

Meadowvale inspection for replacement 6/9/21



SC - Service Connection @ 343.9 ft.



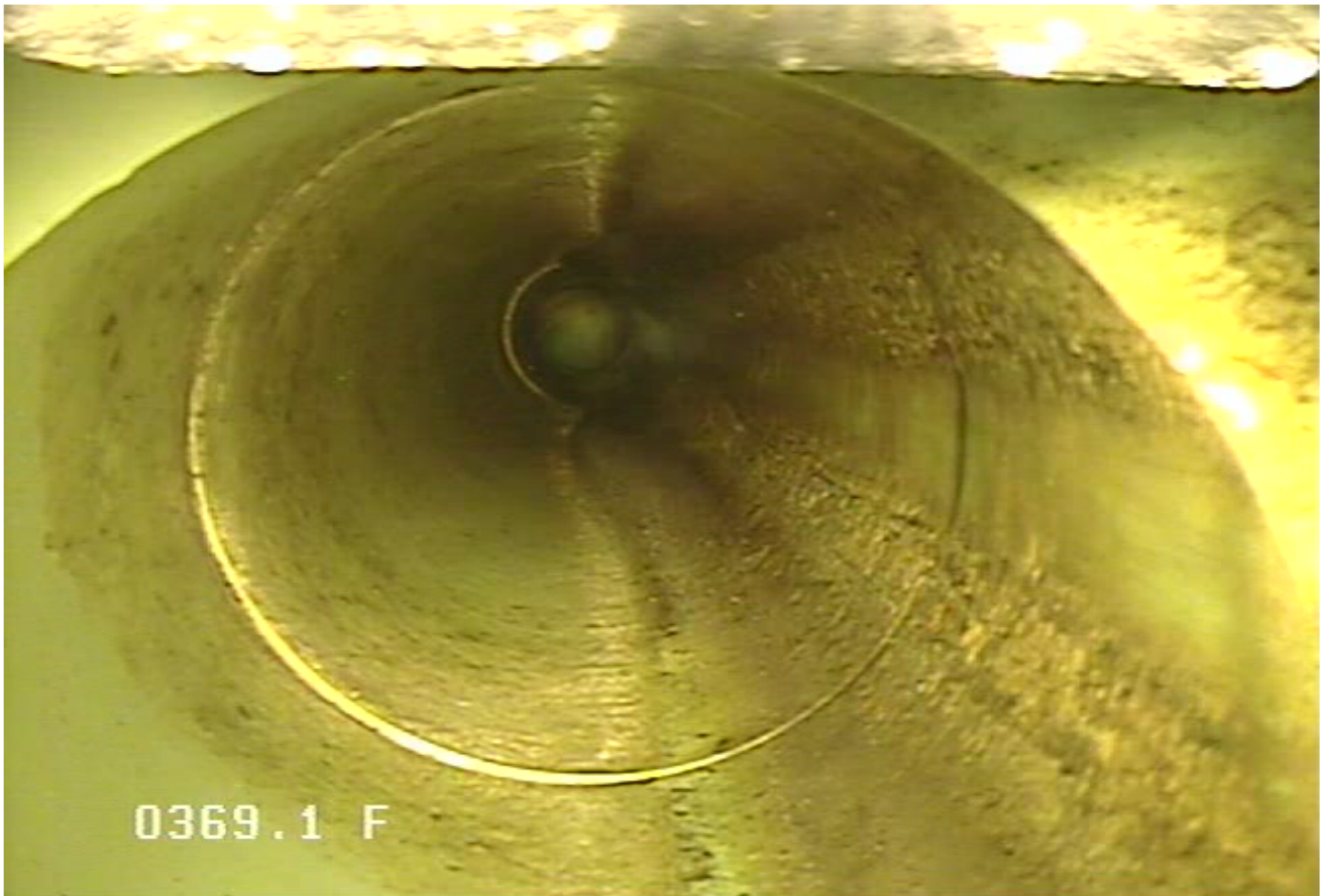


248 Railroad Drive  
Elk River, MN 55330  
Phone: 763-635-1170

<b>Owner</b>	<b>Pipe Number</b>	<b>Upstream MH</b>	<b>Downstream MH</b>	<b>Date</b>			
City of Elk River	P32	0883	0884	09-Jun-2021			
<b>Surveyor</b>	<b>Street</b>		<b>City</b>	<b>Time</b>			
Andy	Meadowvale/Concord		Elk River	9:04 AM			
<b>Size</b>	<b>Material</b>	<b>Sewer Use</b>	<b>Purpose</b>	<b>Length</b>	<b>(TV'd)</b>	<b>Pre-Clean</b>	<b>Weather</b>
8	PVC	Sanitary	Maintenance Related	396.722 3	393.2	Jetting	Dry

**Comments**

Meadowvale inspection for replacement 6/9/21



SC - Service Connection @ 369.1 ft.

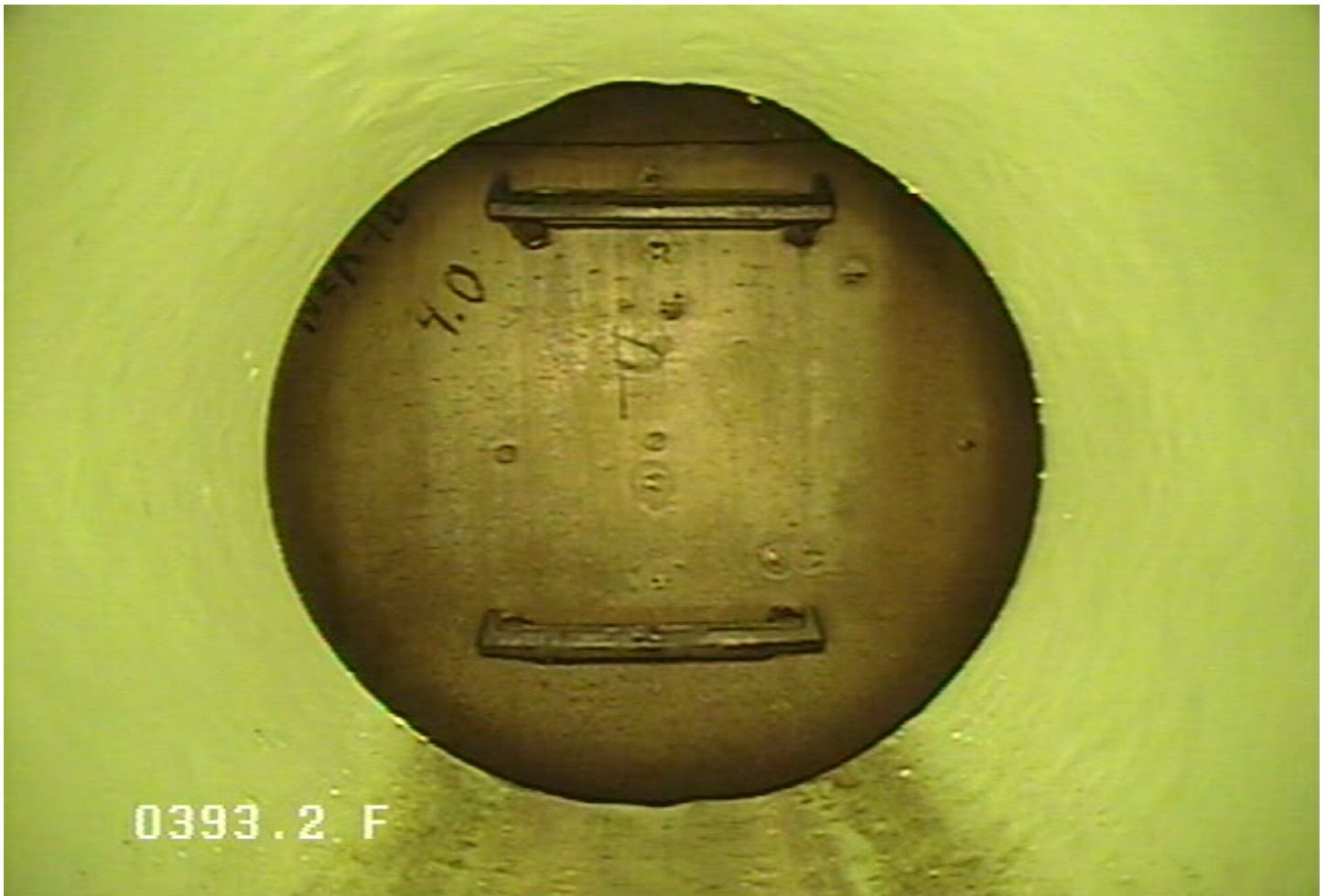


248 Railroad Drive  
Elk River, MN 55330  
Phone: 763-635-1170

<b>Owner</b>	<b>Pipe Number</b>	<b>Upstream MH</b>	<b>Downstream MH</b>	<b>Date</b>			
City of Elk River	P32	0883	0884	09-Jun-2021			
<b>Surveyor</b>	<b>Street</b>	<b>City</b>	<b>Time</b>				
Andy	Medowvale/Concord	Elk River	9:04 AM				
<b>Size</b>	<b>Material</b>	<b>Sewer Use</b>	<b>Purpose</b>	<b>Length</b>	<b>(TV'd)</b>	<b>Pre-Clean</b>	<b>Weather</b>
8	PVC	Sanitary	Maintenance Related	396.722 3	393.2	Jetting	Dry

**Comments**

Medowvale inspection for replacement 6/9/21



MH - Manhole @ 393.2 ft.



248 Railroad Drive  
Elk River, MN 55330  
Phone: 763-635-1170

<b>Owner</b> City of Elk River	<b>Pipe Number</b> P32	<b>Upstream MH</b> 0883	<b>Downstream MH</b> 0884	<b>Date</b> 09-Jun-2021			
<b>Surveyor</b> Andy	<b>Street</b> Meadowvale/Concord		<b>City</b> Elk River	<b>Time</b> 9:04 AM			
<b>Size</b> 8	<b>Material</b> PVC	<b>Sewer Use</b> Sanitary	<b>Purpose</b> Maintenance Related	<b>Length</b> 396.722 3	<b>(TV'd)</b> 393.2	<b>Pre-Clean</b> Jetting	<b>Weather</b> Dry

#### Comments

Meadowvale inspection for replacement 6/9/21

