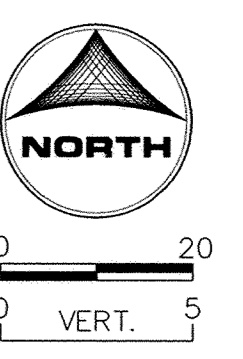
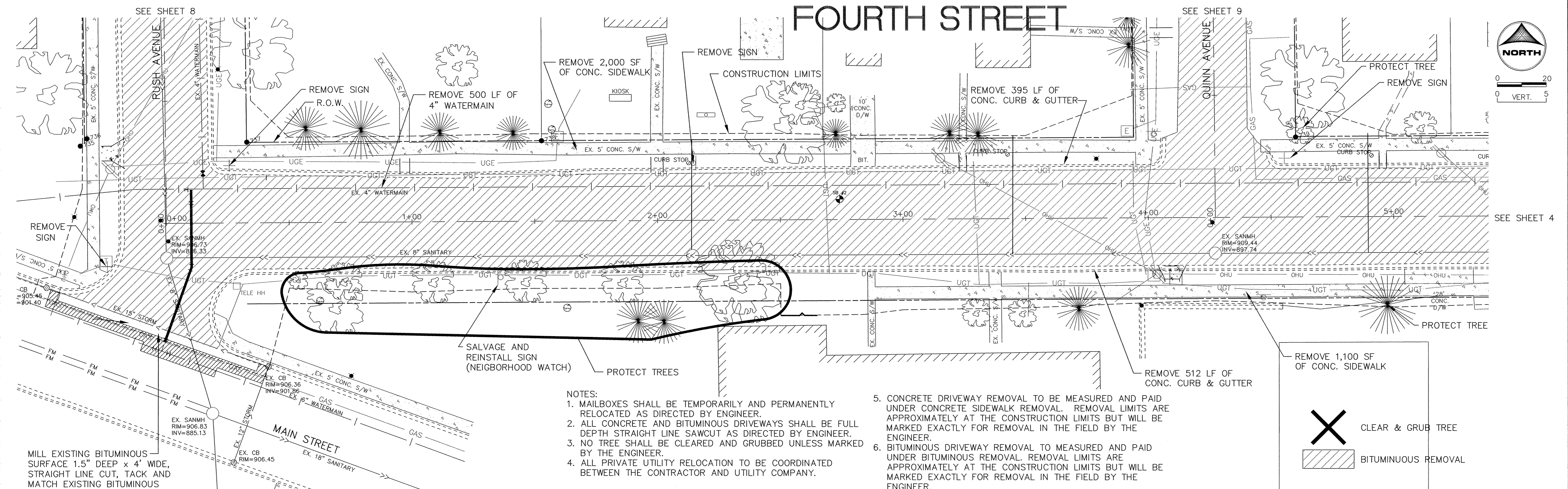
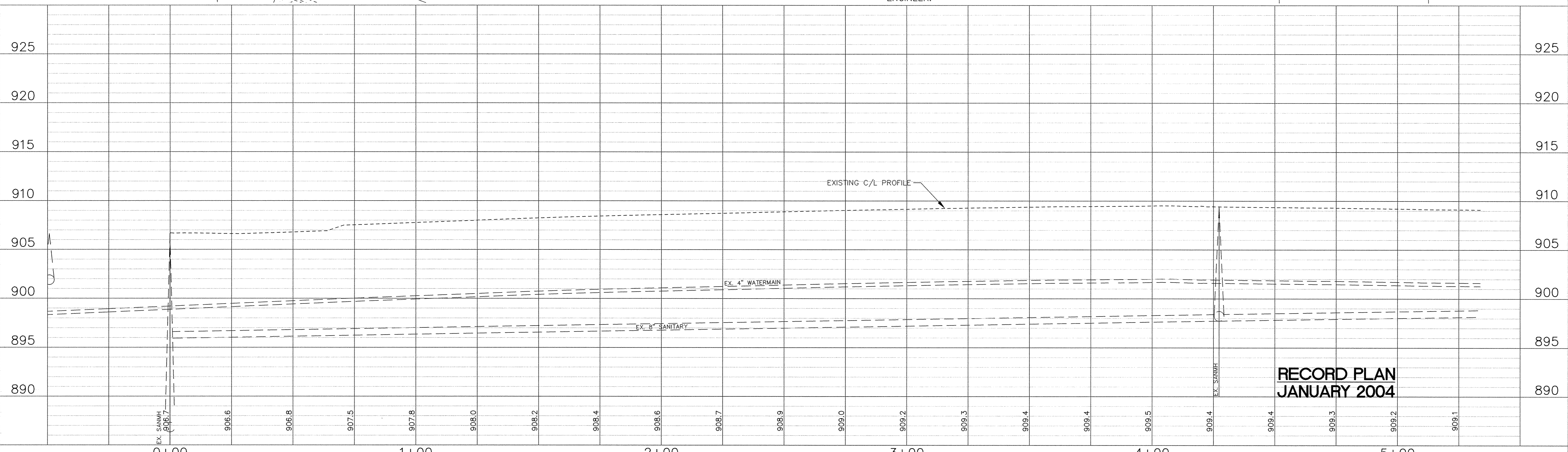
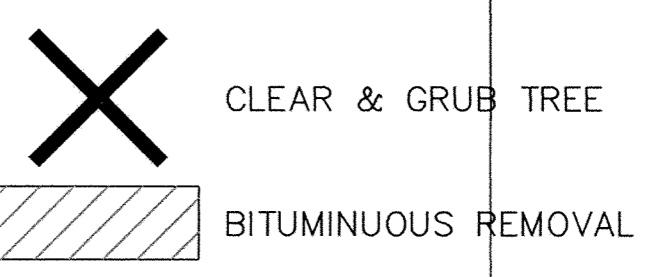


# FOURTH STREET



- NOTES:
1. MAILBOXES SHALL BE TEMPORARILY AND PERMANENTLY RELOCATED AS DIRECTED BY ENGINEER.
  2. ALL CONCRETE AND BITUMINOUS DRIVEWAYS SHALL BE FULL DEPTH STRAIGHT LINE SAWCUT AS DIRECTED BY ENGINEER.
  3. NO TREE SHALL BE CLEARED AND GRUBBED UNLESS MARKED BY THE ENGINEER.
  4. ALL PRIVATE UTILITY RELOCATION TO BE COORDINATED BETWEEN THE CONTRACTOR AND UTILITY COMPANY.
  5. CONCRETE DRIVEWAY REMOVAL TO BE MEASURED AND PAID UNDER CONCRETE SIDEWALK REMOVAL. REMOVAL LIMITS ARE APPROXIMATELY AT THE CONSTRUCTION LIMITS BUT WILL BE MARKED EXACTLY FOR REMOVAL IN THE FIELD BY THE ENGINEER.
  6. BITUMINOUS DRIVEWAY REMOVAL TO MEASURED AND PAID UNDER BITUMINOUS REMOVAL. REMOVAL LIMITS ARE APPROXIMATELY AT THE CONSTRUCTION LIMITS BUT WILL BE MARKED EXACTLY FOR REMOVAL IN THE FIELD BY THE ENGINEER.



**RECORD PLAN  
JANUARY 2004**

DESIGNED BY: DESIGNED BY DRAWN BY: RKM  
 APPROVED BY: APPROVED BY JOB NUMBER 818980J  
 CAD DATE: February 11, 2004 10:50:08 a.m.  
 CAD FILE: 818980J\As-built\C\CS\CS-E01.DWG (RMONJEA)

I HEREBY CERTIFY THAT THIS PLAN, SPECIFICATION, OR REPORT WAS PREPARED BY ME OR UNDER MY DIRECT SUPERVISION AND THAT I AM A DULY LICENSED PROFESSIONAL ENGINEER UNDER THE LAWS OF THE STATE OF MINNESOTA.  
 SIGNATURE: *Kristina Thompson* DATE: 4/2/04  
 PRINTED NAME: KRISTINA J. THOMPSON LIC. NO.: 42350

NO.	DATE	BY	REVISION DESCRIPTION

1326 ENERGY PARK DRIVE  
 ST. PAUL, MINNESOTA 55108  
 (651) 644-4389

**2003 STREET IMPROVEMENTS  
 CITY OF ELK RIVER**

EXISTING TOPOGRAPHY AND REMOVALS  
 FOURTH STREET  
 0+00 TO 5+00

SHEET NO.  
**3**

DRAWING NUMBER 031MPR.04 SHEET NO. 3

SARCO PRODUCTS • NEW HOPE, MINNESOTA  
 PREPARED BY: PAUL NUMBER 8552  
 PROJECT: 031MPR.04