

SACO PRODUCTS • NEW HOPE, MINNESOTA
 PREPARED BY PART NUMBER 8355
 PARTIAL SCALE OF PLAN OR THIS LINE
 SACO PRODUCTS • NEW HOPE, MINNESOTA
 PREPARED BY PART NUMBER 8355
 PARTIAL SCALE OF PLAN OR THIS LINE
 SACO PRODUCTS • NEW HOPE, MINNESOTA
 PREPARED BY PART NUMBER 8355
 PARTIAL SCALE OF PLAN OR THIS LINE
 SACO PRODUCTS • NEW HOPE, MINNESOTA
 PREPARED BY PART NUMBER 8355
 PARTIAL SCALE OF PLAN OR THIS LINE

2003 STREET IMPROVEMENTS

WATERMAIN, STORM SEWER AND STREET CONSTRUCTION

NOTE:
 THESE PLANS HAVE BEEN REDUCED TO
 APPROXIMATELY 1/2 THEIR ORIGINAL SIZE.
 THESE 1/2 SIZE PLANS ARE TO BE USED
 FOR BIDDING PURPOSES ONLY.

INDEX	
SHEET NO. 1	TITLE SHEET
SHEET NO. 2	LOCATION MAP AND TYPICAL SECTIONS
SHEET NO. 3-13	EXISTING TOPOGRAPHY AND REMOVALS
SHEET NO. 14-24	PLAN AND PROFILE
SHEET NO. 25-41	CROSS SECTIONS
SHEET NO. 42-45	DETAILS

THIS PLAN CONTAINS 45 SHEETS

I HEREBY CERTIFY THAT THIS PLAN, SPECIFICATION,
 OR REPORT WAS PREPARED BY ME OR UNDER MY DIRECT
 SUPERVISION AND THAT I AM A DULY LICENSED
 PROFESSIONAL ENGINEER UNDER THE LAWS OF THE
 STATE OF MINNESOTA.

Kristina Thompson KRISTINA J. THOMPSON
 DATE APRIL 21, 2003 LIC.NO. 42350

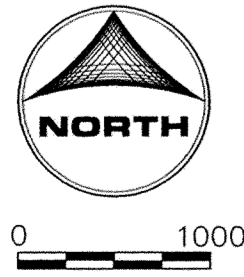
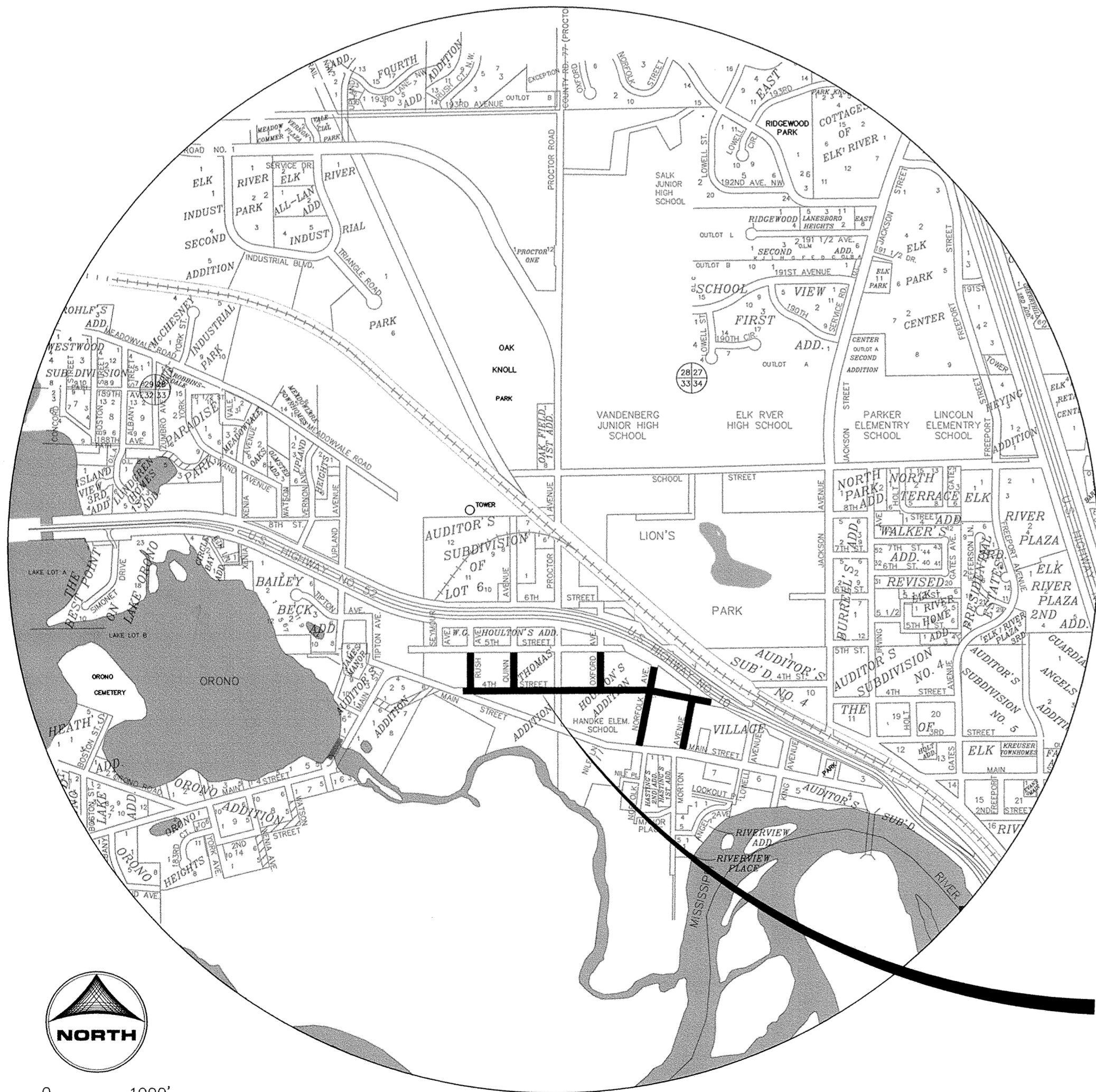
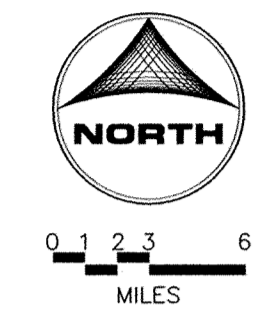
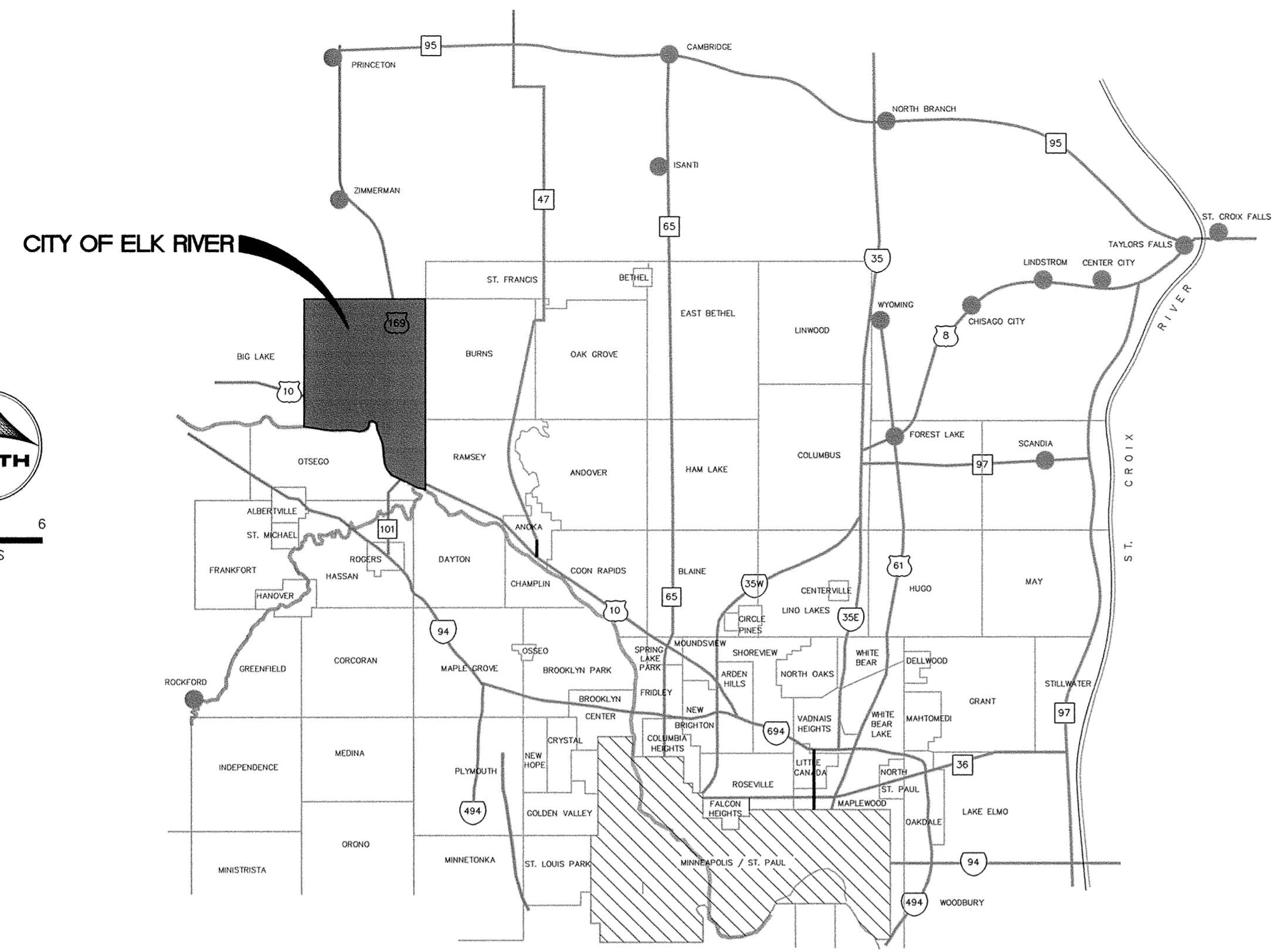
1326 ENERGY PARK DRIVE
 ST. PAUL, MINNESOTA 55108
 (651) 644-4389

Howard R. Green Company
 CONSULTING ENGINEERS

PREPARED FOR:

THE CITY OF ELK RIVER

RECORD PLAN
JANUARY 2004



LOCATION MAP

PROJECT LOCATION