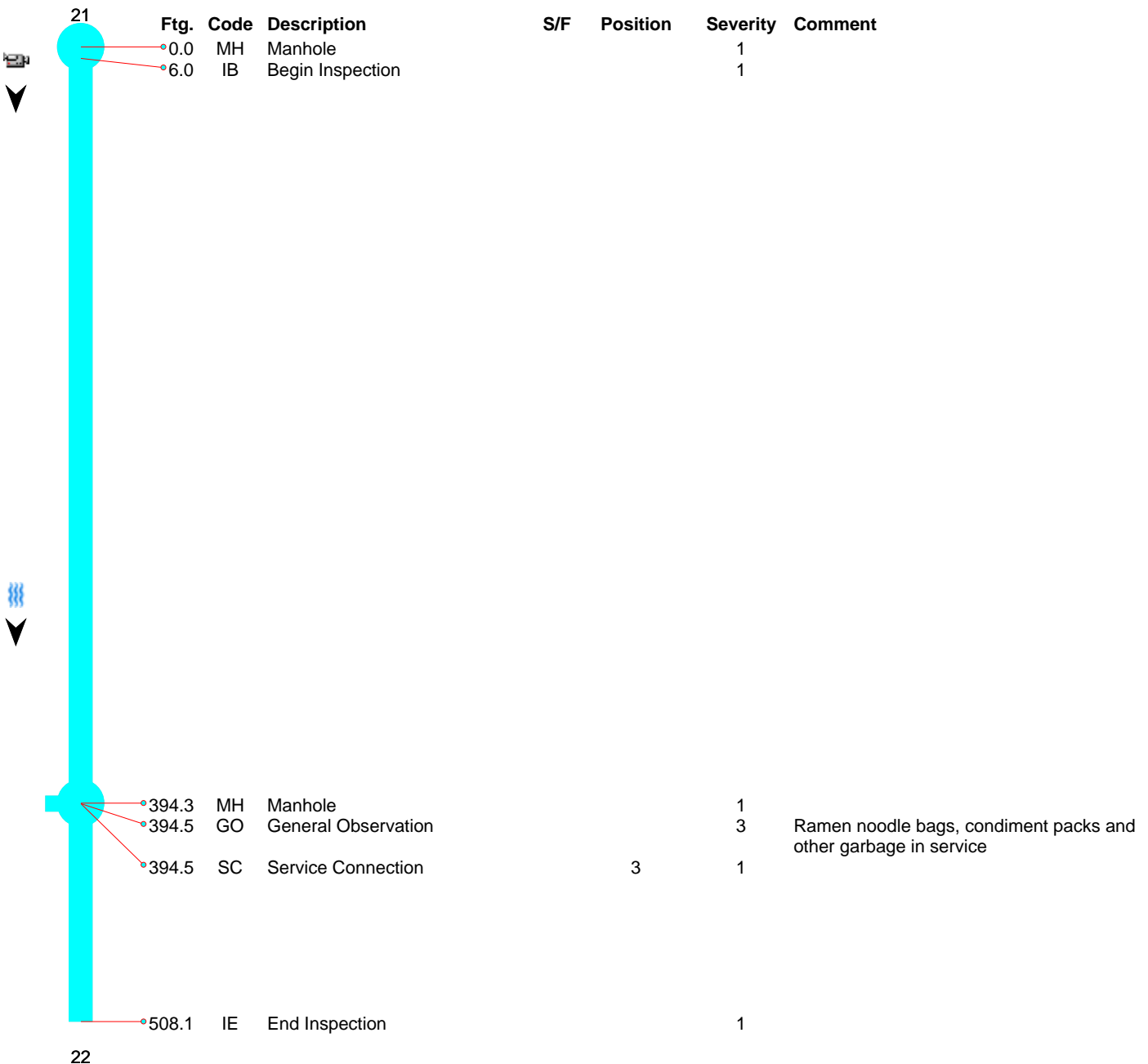




248 Railroad Drive  
Elk River, MN 55330  
Phone: 763-635-1170

<b>Owner</b> City of Elk River	<b>Pipe Number</b> P126	<b>Upstream MH</b> 21	<b>Downstream MH</b> 22	<b>Date</b> 17-Oct-2012
<b>Surveyor</b> Kevin Beadles	<b>Street</b> west side of prison		<b>City</b> Elk River	<b>Time</b> 9:39 AM
<b>Size</b> 12	<b>Material</b> PVC	<b>Sewer Use</b> Sanitary	<b>Purpose</b> Maintenance Related	<b>Length</b> 399.913 4
			<b>(TV'd)</b> 508.1	<b>Pre-Clean</b> No Pre-Cleaning
				<b>Weather</b> Dry

### Comments





248 Railroad Drive  
Elk River, MN 55330  
Phone: 763-635-1170

<b>Owner</b>	<b>Pipe Number</b>	<b>Upstream MH</b>	<b>Downstream MH</b>	<b>Date</b>			
City of Elk River	P126	21	22	17-Oct-2012			
<b>Surveyor</b>	<b>Street</b>	<b>City</b>	<b>Time</b>				
Kevin Beadles	west side of prison	Elk River	9:39 AM				
<b>Size</b>	<b>Material</b>	<b>Sewer Use</b>	<b>Purpose</b>	<b>Length</b>	<b>(TV'd)</b>	<b>Pre-Clean</b>	<b>Weather</b>
12	PVC	Sanitary	Maintenance Related	399.913 4	508.1	No Pre-Cleaning	Dry

#### Comments

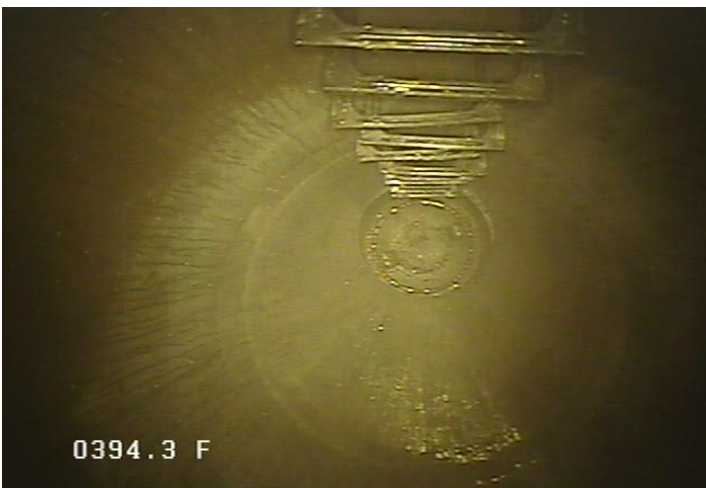
--



MH - Manhole @ 0.0 ft.



IB - Begin Inspection @ 6.0 ft.



MH - Manhole @ 394.3 ft.



GO - General Observation @ 394.5 ft.  
Ramen noodle bags, condiment packs and other garbage in service



248 Railroad Drive  
Elk River, MN 55330  
Phone: 763-635-1170

<b>Owner</b>	<b>Pipe Number</b>	<b>Upstream MH</b>	<b>Downstream MH</b>	<b>Date</b>			
City of Elk River	P126	21	22	17-Oct-2012			
<b>Surveyor</b>	<b>Street</b>		<b>City</b>	<b>Time</b>			
Kevin Beadles	west side of prison		Elk River	9:39 AM			
<b>Size</b>	<b>Material</b>	<b>Sewer Use</b>	<b>Purpose</b>	<b>Length</b>	<b>(TV'd)</b>	<b>Pre-Clean</b>	<b>Weather</b>
12	PVC	Sanitary	Maintenance Related	399.913 4	508.1	No Pre- Cleaning	Dry

**Comments**

--



SC - Service Connection @ 394.5 ft.



IE - End Inspection @ 508.1 ft.



248 Railroad Drive  
Elk River, MN 55330  
Phone: 763-635-1170

<b>Owner</b> City of Elk River	<b>Pipe Number</b> P126	<b>Upstream MH</b> 21	<b>Downstream MH</b> 22	<b>Date</b> 17-Oct-2012			
<b>Surveyor</b> Kevin Beadles	<b>Street</b> west side of prison		<b>City</b> Elk River	<b>Time</b> 9:39 AM			
<b>Size</b> 12	<b>Material</b> PVC	<b>Sewer Use</b> Sanitary	<b>Purpose</b> Maintenance Related	<b>Length</b> 399.913 4	<b>(TV'd)</b> 508.1	<b>Pre-Clean</b> No Pre- Cleaning	<b>Weather</b> Dry

#### Comments

--

