

Street and Utility Plans

for

Miske Meadows Eighth Addition

Elk River, Minnesota

CABLE COMPANY
CHARTER COMMUNICATIONS
101 6TH ST NE
BUFFALO, MN 55414
TEL - 763-682-5982
CONTACT- JOSH BINEFELD

CONSTRUCTION INSPECTOR
TEL - 763-635-1053
CONTACT: RYAN SANDHOEFNER

ELK RIVER PUBLIC SAFETY
13077 ORONO PARKWAY
ELK RIVER, MN 55330
763-635-1260
CONTACT:RON NIERENHAUSEN

JOINT TRENCH CONTRACTOR
MICHELS CORPORATION
TEL- 920-583-3132
CONTACT- BRIAN GORDON & KEN PAYETTE

GAS COMPANY - CENTERPOINT ENERGY
700 W LINDEN AVE
MINNEAPOLIS, MN 55440
TEL- 612-321-5426
FAX- 612-321-5480
CONTACT- ANDREW BALGOBIN

TELEPHONE/FIBER COMPANY
CHARTER COMMUNICATIONS (SPECTRUM)
110 2ND. ST.
WAITE PARK, MN 56387
TEL - 866-874-2389

ELK RIVER UTILITIES
13069 ORONO PARKWAY
ELK RIVER, MN 55330
CONTACT: MARK FUCHS (ELECTRIC)
TEL - 763-635-1341
FAX - 763-441-2276
CONTACT: DAVE NINOW (WATER)
TEL - 763-635-1361
FAX - 763-441-2276

UTILITY LOCATION
MINNESOTA
GOPHER STATE ONE CALL
(800) 252-1166

GOVERNING SPECIFICATIONS

WATERMAIN AND SANITARY SEWER SHALL BE CONSTRUCTED IN ACCORDANCE WITH THE CITY ENGINEER'S ASSOCIATION OF MINNESOTA STANDARD UTILITIES SPECIFICATIONS (2013) EXCEPT IF MODIFIED HEREIN.

THE 2018 EDITION OF THE MINNESOTA DEPARTMENT OF TRANSPORTATION "STANDARD SPECIFICATIONS FOR CONSTRUCTION" AND ALL SUPPLEMENTAL SPECIFICATIONS FOR CONSTRUCTION SHALL GOVERN.

CURRENT CITY OF ELK RIVER STANDARD SPECIFICATIONS AND DETAILS

ALL TRAFFIC CONTROL DEVICES AND SIGNING SHALL CONFORM TO THE MOST RECENT EDITION OF THE MN MUTCD INCLUDING THE FIELD MANUAL FOR TEMPORARY TRAFFIC CONTROL ZONE LAYOUTS, ALL TRAFFIC CONTROL DEVICES SHALL HAVE RETROREFLECTIVE SHEETING.

PERFORM CONSTRUCTION IN ACCORDANCE WITH THE OCCUPATIONAL SAFETY AND HEALTH ADMINISTRATION (OSHA) LAWS AND REGULATIONS.

CONSULTANT CONTACT LIST:

DEVELOPER/OWNER
LGI HOMES-MINNESOTA, LLC
2850 CUTTERS GROVE
SUITE 207
ELK RIVER, MN 55303
612-840-3438
CONTACT: JAY ROOS

CIVIL ENGINEER
SAMBATEK
12800 WHITEWATER DRIVE, SUITE 300
MINNETONKA, MN 55343
TEL 763-476-6010
FAX 763-476-8532
CONTACT: ERIC LUTH, PE

LANDSCAPE ARCHITECT
SAMBATEK
12800 WHITEWATER DRIVE, SUITE 300
MINNETONKA, MN 55343
TEL 763-476-6010
FAX 763-476-8532
CONTACT: JOSH MCKINNEY

CONTRACTOR
C.W. HOULE INC.
1300 W. CO. RD I
SHOREVIEW, MN 55126
TEL 651-484-6077
CONTACT: BRYAN HOULE

SURVEYOR
SAMBATEK
12800 WHITEWATER DRIVE, SUITE 300
MINNETONKA, MN 55343
TEL 763-476-6010
FAX 763-476-8532
CONTACT: MARK SALO, RLS

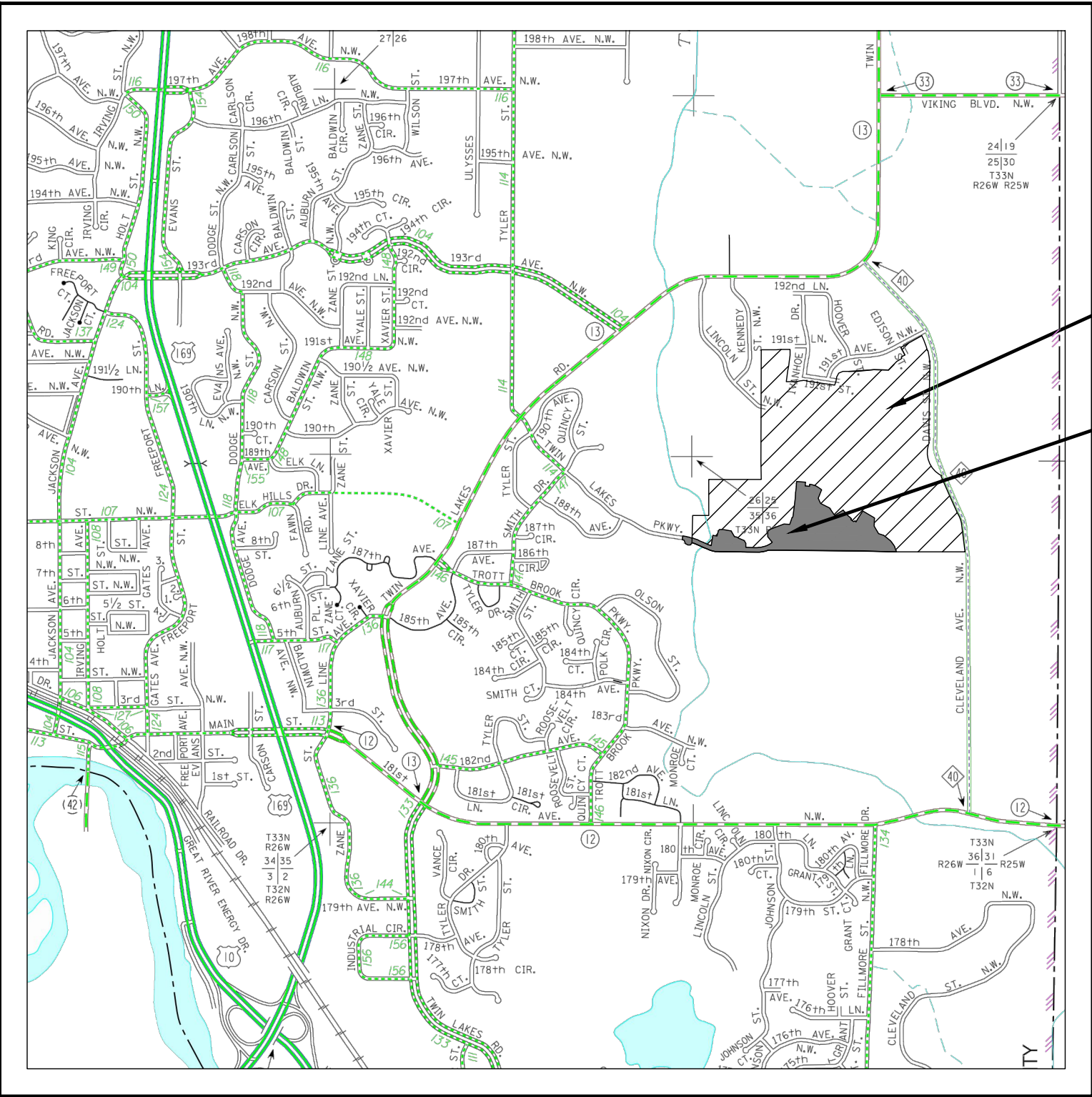
COMPLETED BY: SAMBATEK, INC.
DATE OF COMPLETION: 12/18/2023
STREET/UTILITY CONTRACTOR: C.W. HOULE, INC.
GRADING CONTRACTOR: C.W. HOULE, INC.

RECORD PLAN NOTES

THESE RECORD PLANS HAVE BEEN PREPARED, IN PART, BASED ON INFORMATION COMPILED AND FURNISHED BY OTHERS. THE ENGINEER HAS NOT VERIFIED THE ACCURACY AND/OR COMPLETENESS OF THE INFORMATION PROVIDED AND SHALL NOT BE RESPONSIBLE FOR ANY ERRORS OR OMISSIONS WHICH HAVE BEEN INCORPORATED INTO THESE RECORD PLANS AS A RESULT.



APPROVED FOR CONSTRUCTION:
ELK RIVER CITY ENGINEER - JUSTIN P. FEMRITE, PE



VICINITY MAP
NO SCALE

MISKE MEADOWS
OVERALL DEVELOPMENT

MISKE MEADOWS
8TH ADDITION

BENCHMARKS

BM NO. 1
HYDRANT AT THE SOUTHWEST CORNER OF THE INTERSECTION OF 189TH AVE NW & IVANHOE STREET
TNH ELEV.=944.71

BM NO. 2
HYDRANT AT THE NORTHWEST CORNER OF THE INTERSECTION OF 189TH AVE NW & EDISON STREET
TNH ELEV.=945.61

DATUM: NAVD 88

PROJECT NOTE

IT IS RECOGNIZED THAT THE DEVELOPER, AND THEIR CONTRACTOR, IS RESPONSIBLE TO DELIVER THE PROJECT ACCORDING TO THE REQUIREMENTS OF THE DEVELOPMENT AGREEMENT. IN THE CASE OF CONFLICTING REQUIREMENTS BETWEEN THE DEVELOPERS AGREEMENT AND THE PROJECT SPECIFICATIONS, PROVIDED BY SAMBATEK, THE DEVELOPMENT AGREEMENT SHALL GOVERN.

CONSTRUCTION STAKING NOTE

CONSTRUCTION STAKES WILL BE PROVIDED ONE TIME. ONCE THE CONTRACTOR HAS ORDERED AND RECEIVED THE STAKES, IT IS THE CONTRACTORS RESPONSIBILITY TO PROTECT THE STAKES. THE CONTRACTOR SHALL BE RESPONSIBLE FOR ANY COSTS INCURRED FOR CONSTRUCTION RE-STAKING. COSTS FOR RE-STAKING WILL BE DEDUCTED FROM PAYMENT REQUESTS AND WILL BE INDICATED AS SUCH.

SHEET INDEX	
SHEET	DESCRIPTION
C1.01	TITLE SHEET
C4.01	GRADING PLAN (FOR REFERENCE)
C5.02	
C6.02	UTILITY PLAN - TWIN LAKES PARKWAY
C6.03	UTILITY PLAN - TWIN LAKES PARKWAY
C6.04	UTILITY PLAN - IVANHOE STREET
C6.05	UTILITY PLAN - 188TH AVE NW
C7.01	STORM SEWER
C7.02	STORM SEWER
C7.03	STORM SEWER
C8.01	STREET PLAN & PROFILE - TWIN LAKES PKWY 231+00-239+00
C8.02	STREET PLAN & PROFILE - TWIN LAKES PKWY 239+00-248+00
C8.03	STREET PLAN & PROFILE - TWIN LAKES PKWY 239+00-248+00
C8.04	STREET PLAN & PROFILE - IVANHOE ST. 0+00-9+00
C8.05	STREET PLAN & PROFILE - 188TH AVE NW 0+00-8+00 - EOP

Sambatek
www.sambatek.com
12800 Whitewater Drive, Suite 300
Minnetonka, MN 55343
763.476.6010 telephone
763.476.8532 facsimile
Engineering | Surveying | Planning | Environmental

Client
LGI HOMES-
Minnesota, LLC

2850 CUTTERS GROVE AVENUE
SUITE 207
ANOKA, MN 55303

Project
MISKE
MEADOWS
EIGHTH
ADDITION

Location
ELK RIVER, MN

Certification
I hereby certify that this plan, specification or report was prepared by me or under my direct supervision and that I am a duly licensed professional ENGINEER under the laws of the state of Minnesota.

Eric T. Luth
Registration No. 50475 Date: 06/30/2022
If applicable, contact us for a wet signed copy of this plan which is available upon request at Sambatek's, Minnetonka, MN office.

Summary
Designed: JEB Drawn: TPK/CE/JLB
Approved: ETL Initial Issue: 06/30/2022
Phase: CONSTRUCTION

Revision History
No. Date By Submittal / Revision
06/30/2022 CONSTRUCTION DOCUMENTS
6/08/2023 RECORD PLANS

Sheet Title
TITLE SHEET

Sheet No. Revision
C1.01
Project No. 20460.80