

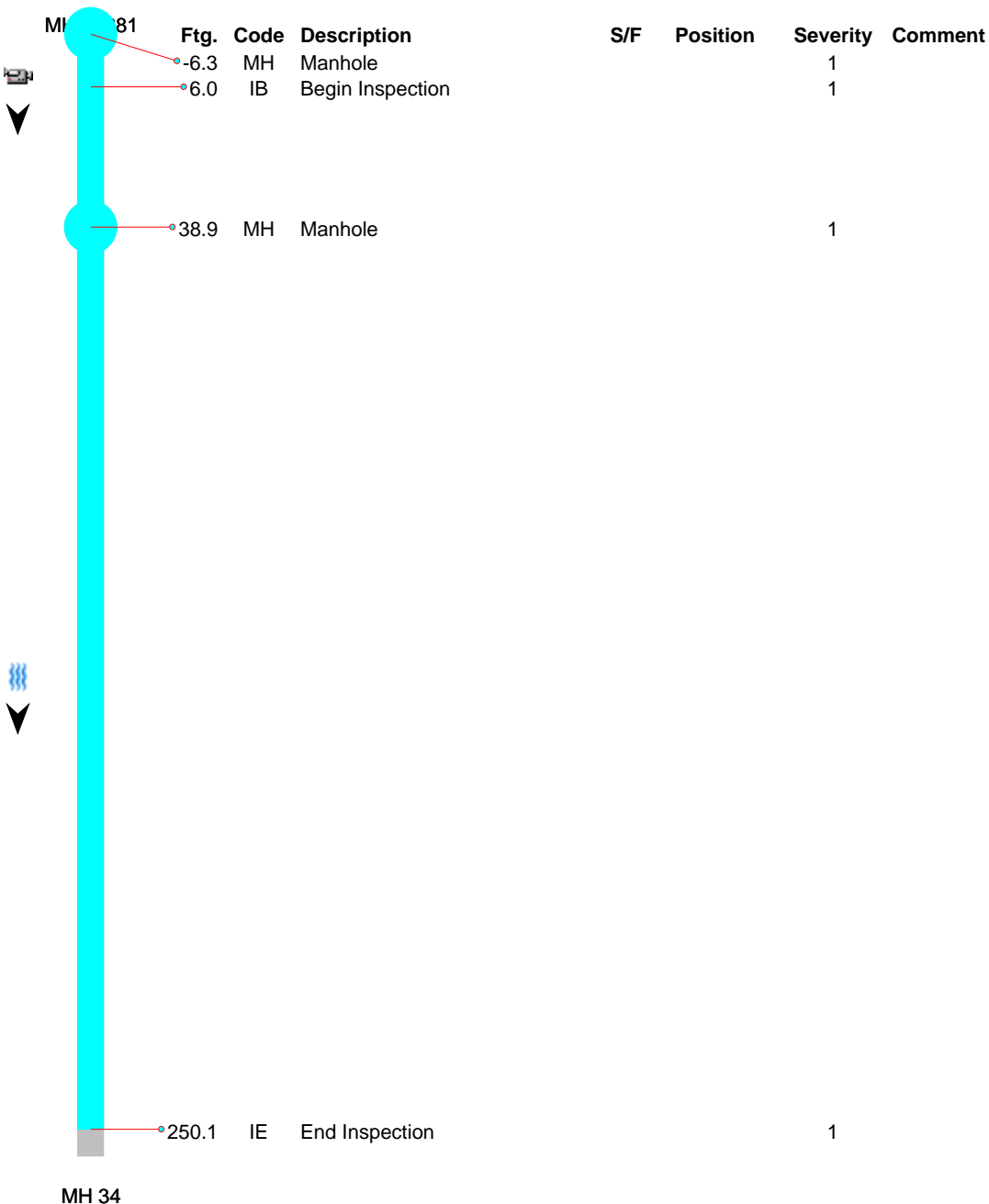


248 Railroad Drive  
Elk River, MN 55330  
Phone: 763-635-1170

<b>Owner</b> City of Elk River	<b>Pipe Number</b> P1337	<b>Upstream MH</b> MH 13281	<b>Downstream MH</b> MH 34	<b>Date</b> 10-Dec-2015
<b>Surveyor</b> Kevin Beadles	<b>Street</b> 185th Av (frontage rd.)		<b>City</b> Elk River	<b>Time</b> 1:34 PM
<b>Size</b> 8	<b>Material</b> Not known	<b>Sewer Use</b> Sanitary	<b>Purpose</b> Maintenance Related	<b>Length</b> 40.0030 5
			<b>(TV'd)</b> 250.1	<b>Pre-Clean</b> Jetting
				<b>Weather</b> Light Rain

### Comments

From frontage road, across Hwy 10, to courthouse



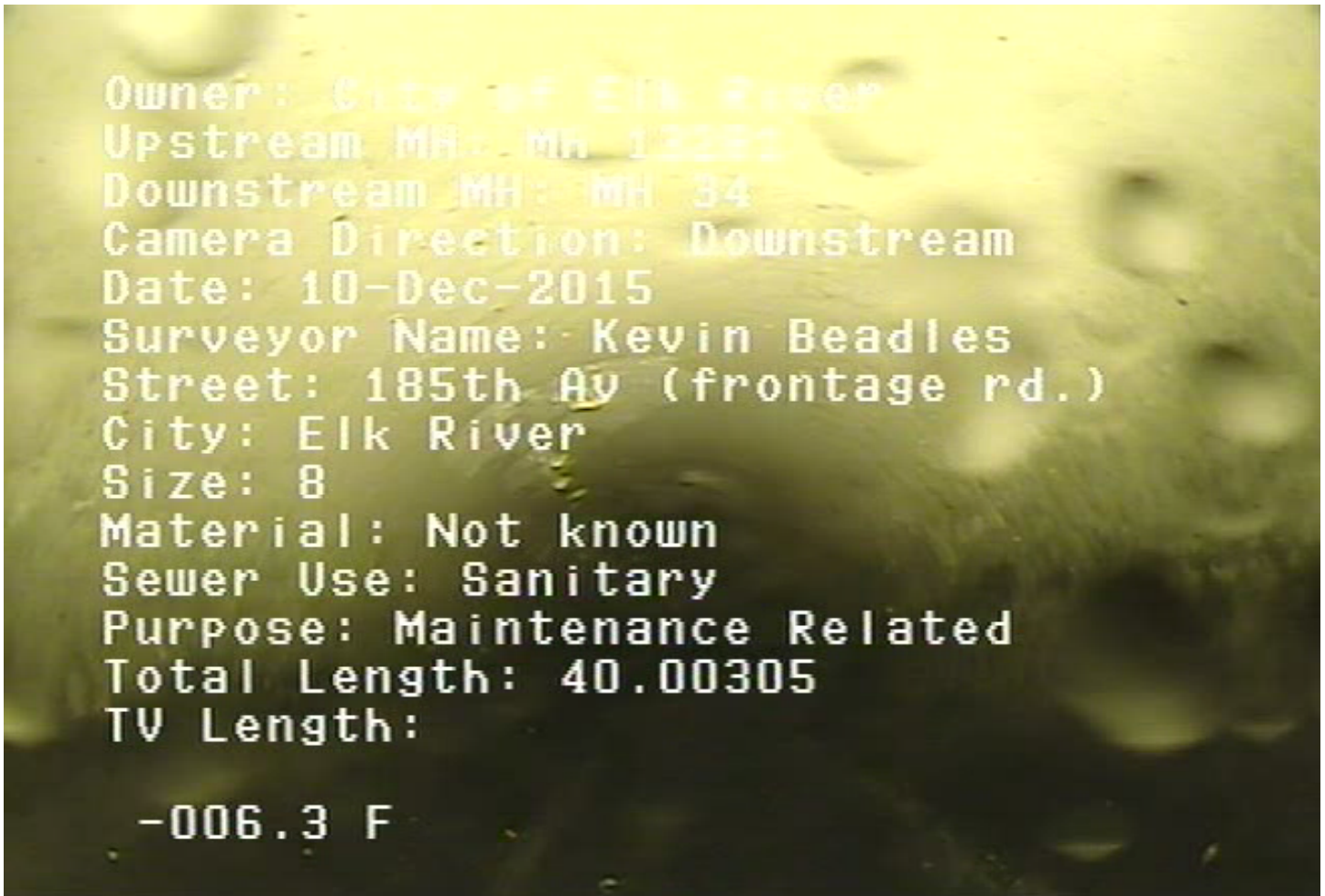


248 Railroad Drive  
Elk River, MN 55330  
Phone: 763-635-1170

<b>Owner</b> City of Elk River	<b>Pipe Number</b> P1337	<b>Upstream MH</b> MH 13281	<b>Downstream MH</b> MH 34	<b>Date</b> 10-Dec-2015			
<b>Surveyor</b> Kevin Beadles	<b>Street</b> 185th Av (frontage rd.)		<b>City</b> Elk River	<b>Time</b> 1:34 PM			
<b>Size</b> 8	<b>Material</b> Not known	<b>Sewer Use</b> Sanitary	<b>Purpose</b> Maintenance Related	<b>Length</b> 40.0030 5	<b>(TV'd)</b> 250.1	<b>Pre-Clean</b> Jetting	<b>Weather</b> Light Rain

#### Comments

From frontage road, across Hwy 10, to courthouse



MH - Manhole @ -6.3 ft.

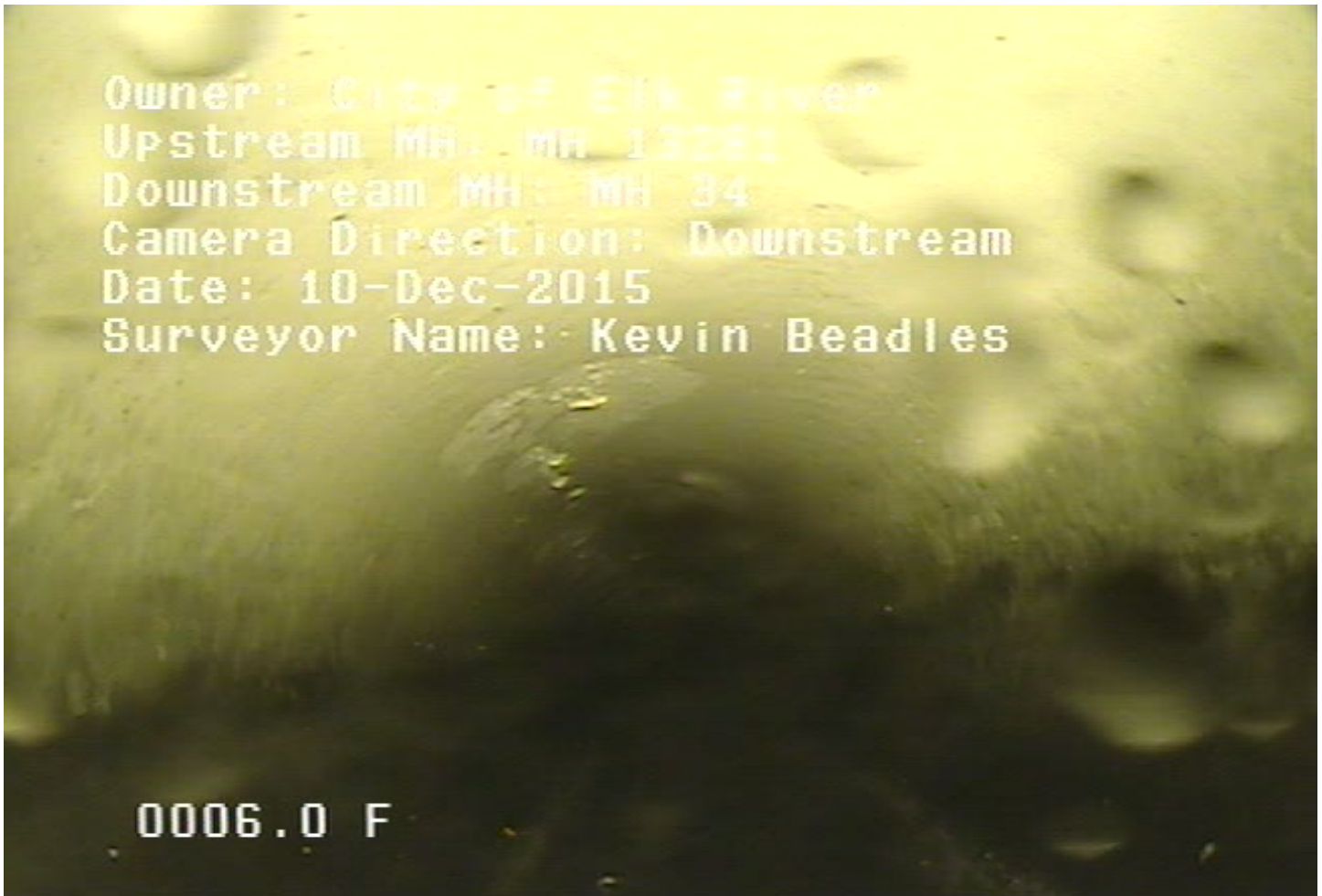


248 Railroad Drive  
Elk River, MN 55330  
Phone: 763-635-1170

<b>Owner</b> City of Elk River	<b>Pipe Number</b> P1337	<b>Upstream MH</b> MH 13281	<b>Downstream MH</b> MH 34	<b>Date</b> 10-Dec-2015			
<b>Surveyor</b> Kevin Beadles	<b>Street</b> 185th Av (frontage rd.)		<b>City</b> Elk River	<b>Time</b> 1:34 PM			
<b>Size</b> 8	<b>Material</b> Not known	<b>Sewer Use</b> Sanitary	<b>Purpose</b> Maintenance Related	<b>Length</b> 40.0030 5	<b>(TV'd)</b> 250.1	<b>Pre-Clean</b> Jetting	<b>Weather</b> Light Rain

**Comments**

From frontage road, across Hwy 10, to courthouse



IB - Begin Inspection @ 6.0 ft.

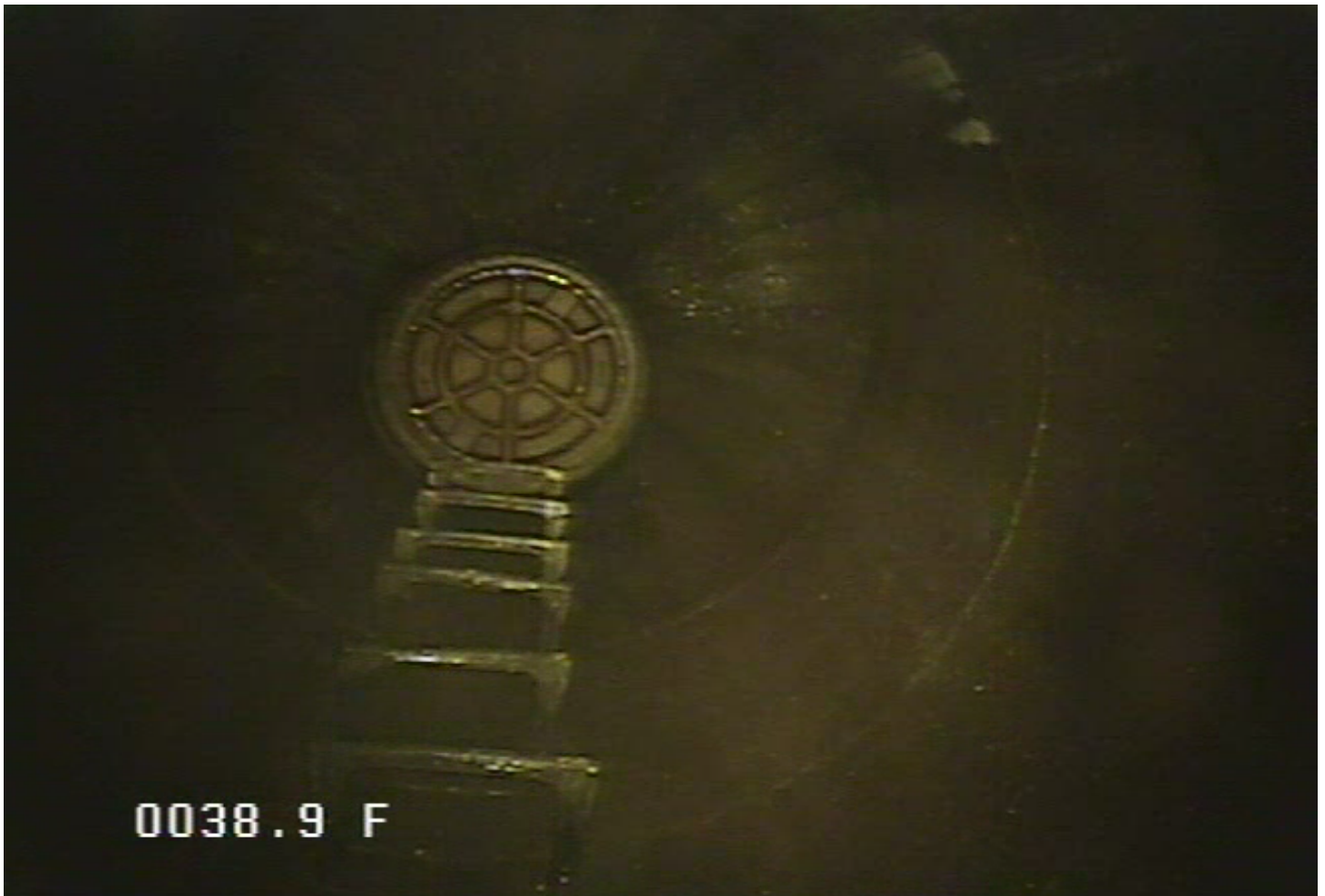


248 Railroad Drive  
Elk River, MN 55330  
Phone: 763-635-1170

<b>Owner</b>	<b>Pipe Number</b>	<b>Upstream MH</b>	<b>Downstream MH</b>	<b>Date</b>
City of Elk River	P1337	MH 13281	MH 34	10-Dec-2015
<b>Surveyor</b>	<b>Street</b>			<b>City</b>
Kevin Beadles	185th Av (frontage rd.)			Elk River
<b>Time</b>	<b>Size</b>	<b>Material</b>	<b>Sewer Use</b>	<b>Purpose</b>
1:34 PM	8	Not known	Sanitary	Maintenance Related
<b>Length</b>	<b>(TV'd)</b>	<b>Pre-Clean</b>	<b>Weather</b>	
40.0030 5	250.1	Jetting	Light Rain	

#### Comments

From frontage road, across Hwy 10, to courthouse



MH - Manhole @ 38.9 ft.



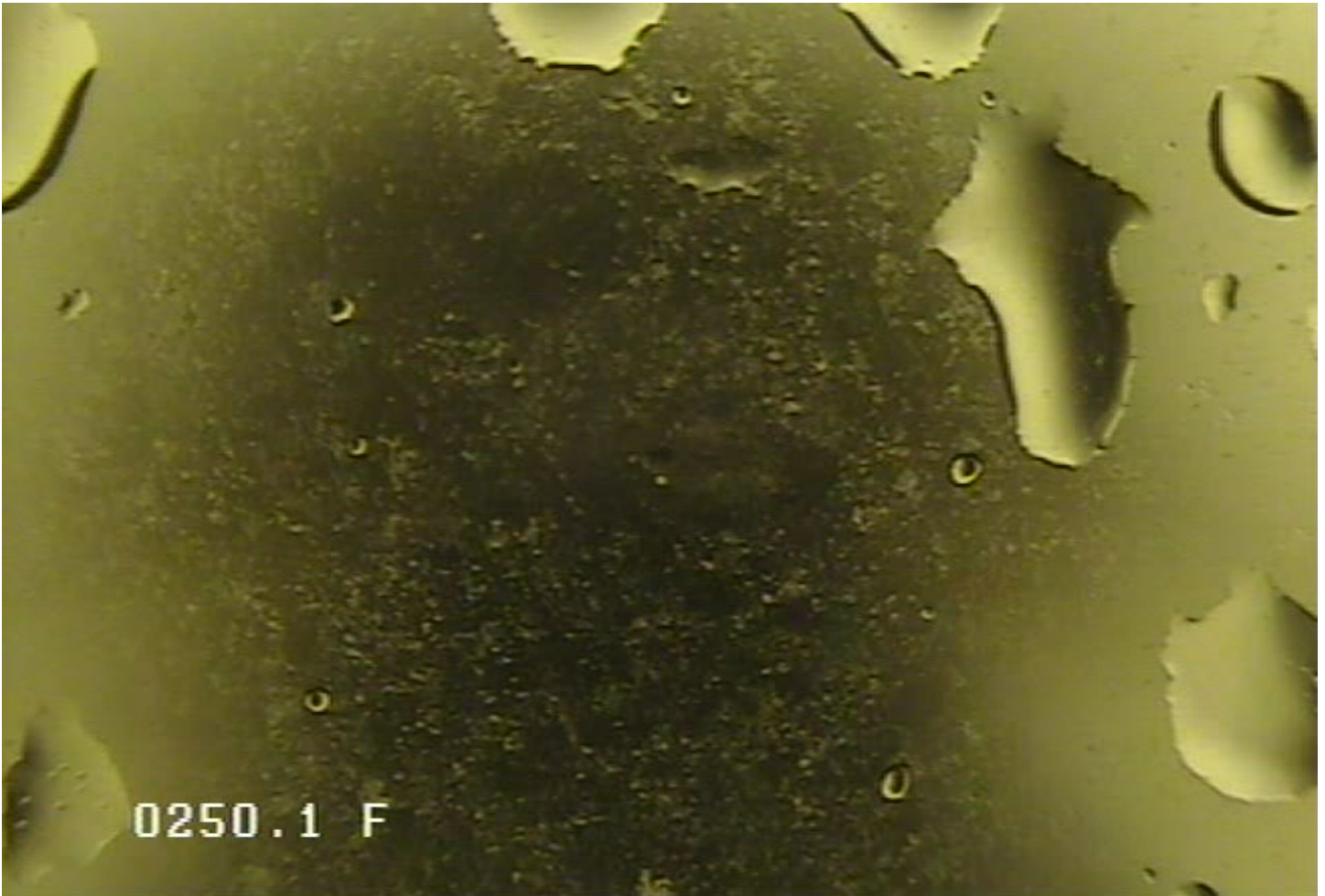


248 Railroad Drive  
Elk River, MN 55330  
Phone: 763-635-1170

<b>Owner</b> City of Elk River	<b>Pipe Number</b> P1337	<b>Upstream MH</b> MH 13281	<b>Downstream MH</b> MH 34	<b>Date</b> 10-Dec-2015			
<b>Surveyor</b> Kevin Beadles	<b>Street</b> 185th Av (frontage rd.)		<b>City</b> Elk River	<b>Time</b> 1:34 PM			
<b>Size</b> 8	<b>Material</b> Not known	<b>Sewer Use</b> Sanitary	<b>Purpose</b> Maintenance Related	<b>Length</b> 40.0030 5	<b>(TV'd)</b> 250.1	<b>Pre-Clean</b> Jetting	<b>Weather</b> Light Rain

**Comments**

From frontage road, across Hwy 10, to courthouse



IE - End Inspection @ 250.1 ft.



248 Railroad Drive  
Elk River, MN 55330  
Phone: 763-635-1170

<b>Owner</b>	<b>Pipe Number</b>	<b>Upstream MH</b>	<b>Downstream MH</b>	<b>Date</b>			
City of Elk River	P1337	MH 13281	MH 34	10-Dec-2015			
<b>Surveyor</b>	<b>Street</b>		<b>City</b>	<b>Time</b>			
Kevin Beadles	185th Av (frontage rd.)		Elk River	1:34 PM			
<b>Size</b>	<b>Material</b>	<b>Sewer Use</b>	<b>Purpose</b>	<b>Length</b>	<b>(TV'd)</b>	<b>Pre-Clean</b>	<b>Weather</b>
8	Not known	Sanitary	Maintenance Related	40.0030 5	250.1	Jetting	Light Rain

#### Comments

From frontage road, across Hwy 10, to courthouse

