



ALL CASTINGS (MANHOLES AND VALVE BOXES) MUST BE ADJUSTED TO 1/2" BELOW THE FINISHED ASPHALT BASE ELEVATION BEFORE PAVING OF THE ASPHALT BASE. NO CUTS WILL BE ALLOWED IN THE ASPHALT BASE. ADJUSTMENTS TO MEET FINAL WEAR COURSE ELEVATIONS WILL BE ACCOMPLISHED USING GLUE IN STEEL ADJUSTING RINGS. THE CITY WILL IMPOSE A \$1000/PATCH CHARGE TO THE DEVELOPER FOR EVERY PATCH LOCATION (NEEDED FOR CASTING ADJUSTMENT OR OTHER PAVEMENT REPAIR) IN THE BASE COURSE BITUMINOUS PAVEMENT.

GENERAL NOTES

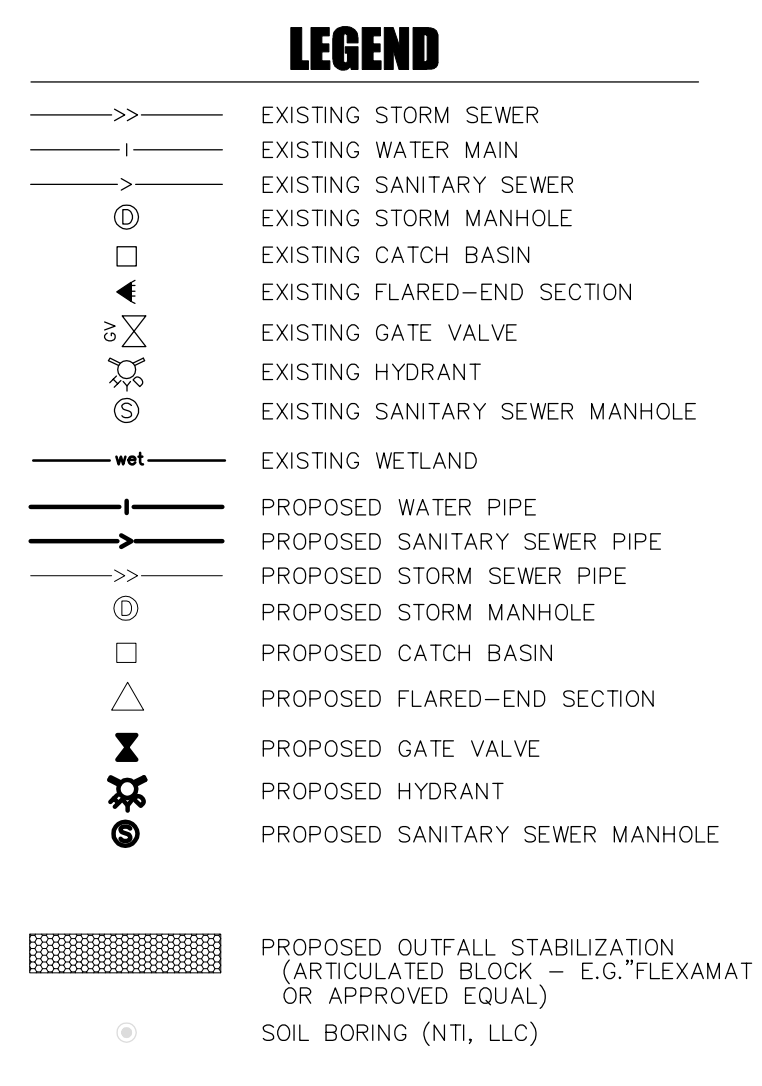
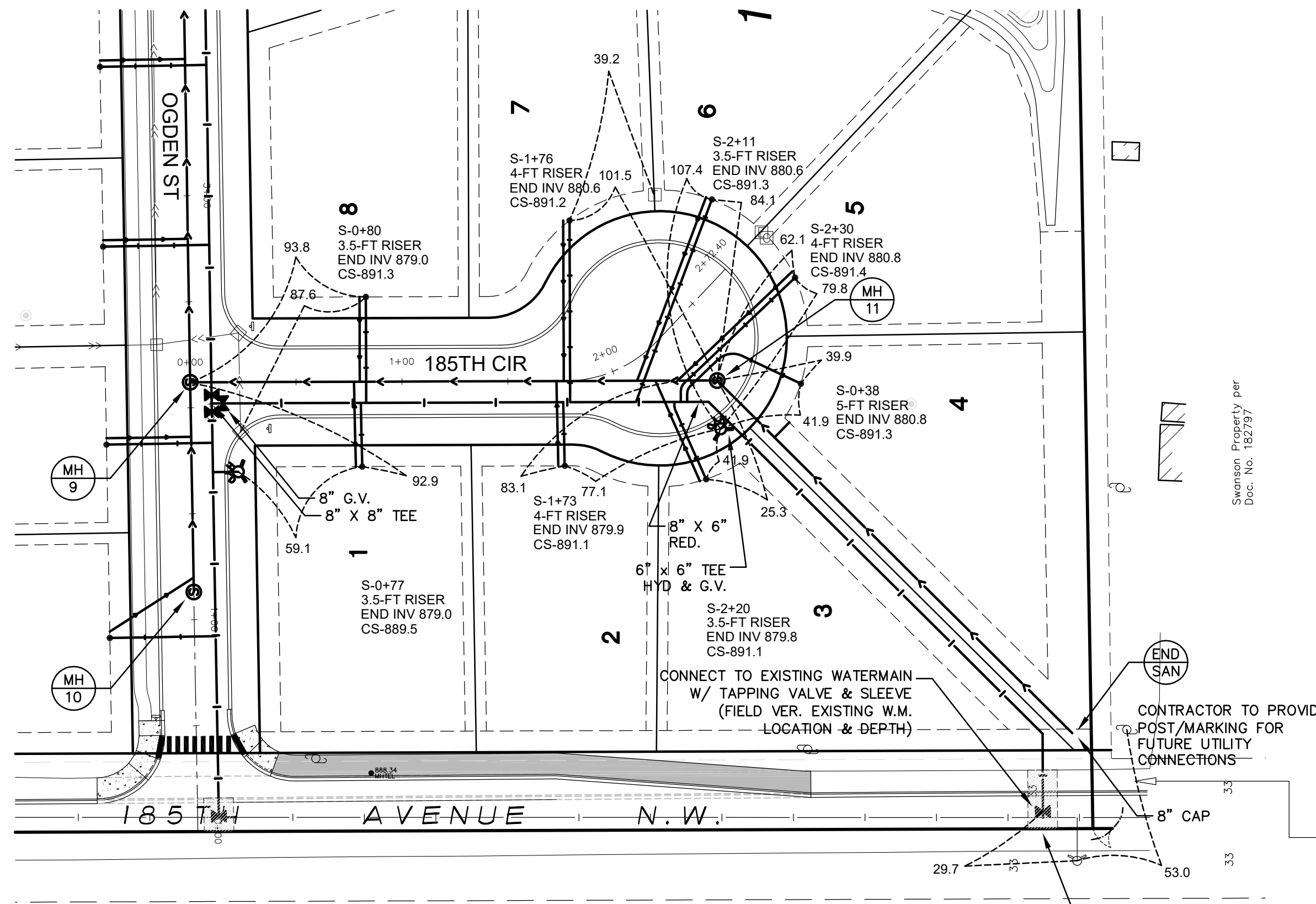
1. THE INFORMATION SHOWN ON THESE DRAWINGS CONCERNING TYPE AND LOCATION OF EXISTING UTILITIES IS NOT GUARANTEED TO BE ACCURATE OR ALL INCLUSIVE. THE CONTRACTOR IS RESPONSIBLE FOR MAKING HIS OWN DETERMINATION AS TO TYPE AND LOCATION OF UTILITIES AS NECESSARY TO AVOID DAMAGE TO THESE UTILITIES.
2. CONTACT GOPHER STATE ONE-CALL AT (651) 454-0002 FOR EXISTING UTILITY LOCATIONS.
3. FIELD VERIFY SIZE, ELEVATION, AND LOCATION OF EXISTING SANITARY SEWER, STORM SEWER, AND WATERMAIN AND NOTIFY ENGINEER OF ANY DISCREPANCIES PRIOR TO THE START OF INSTALLATIONS.
4. INSTALLATIONS SHALL CONFORM TO THE CITY OF ELK RIVER STANDARD SPECIFICATIONS & DETAIL PLATES WHICH GOVERN OVER ALL OTHER REFERENCED SPECIFICATIONS.
5. USE TRAFFIC CONTROL MEASURES IN ACCORDANCE WITH THE PROVISIONS OF "THE MINNESOTA MANUAL OF UNIFORM TRAFFIC CONTROL DEVICES" AS NECESSARY WHENEVER GRADING, UTILITY, OR PAVING OPERATIONS ENROACH ONTO ADJACENT STREETS.
- 5.1. TRAFFIC CONTROL REQUIRED FOR TRAIL DISRUPTION.
6. TEMPORARY EROSION CONTROL MEASURES SHALL BE IN PLACE PRIOR TO THE START OF ANY CONSTRUCTION.
7. SEE STORM WATER POLLUTION PREVENTION PLAN FOR ADDITIONAL EROSION CONTROL DETAILS AND SITE SEQUENCING NOTES.
8. NATIONAL POLLUTANT DISCHARGE ELIMINATION SYSTEM (N.P.D.E.S.) PERMIT REQUIRED.

SANITARY SEWER NOTES

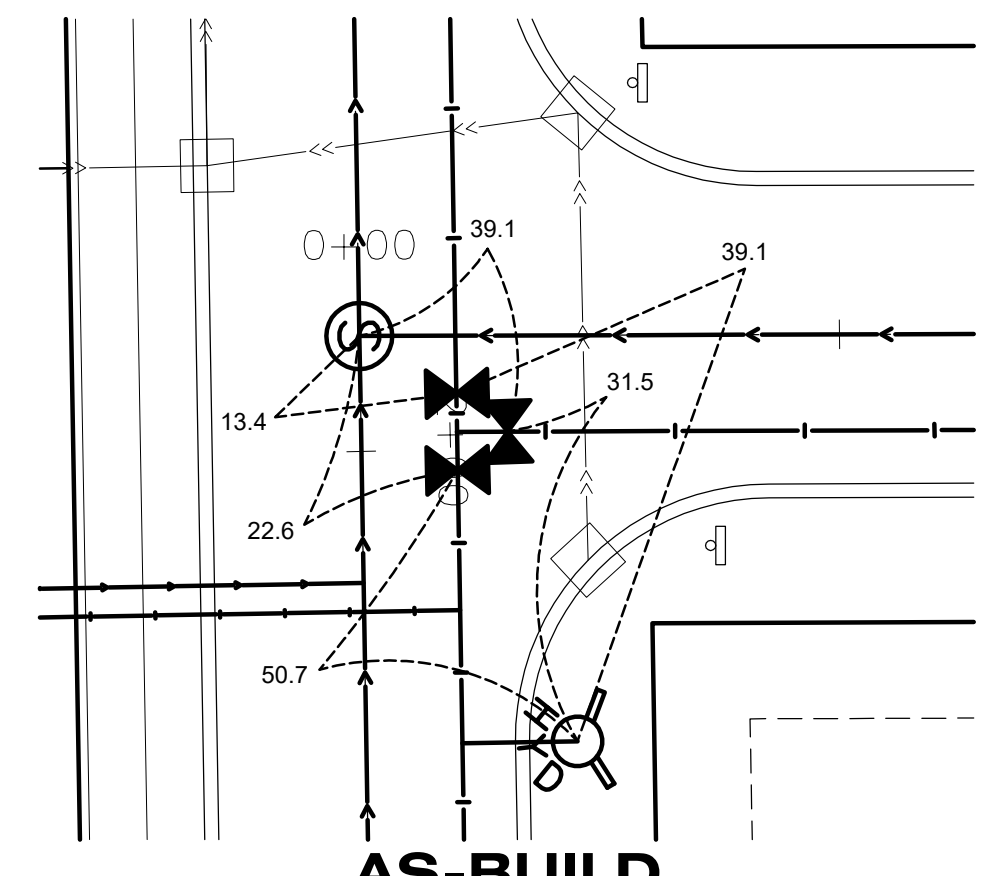
1. PROPOSED SANITARY SEWER PIPE SHALL BE:
 - 1.1. POLYVINYL CHLORIDE (PVC) SDR 35
2. FIELD VERIFY SIZE, ELEVATION AND LOCATION OF EXISTING SANITARY SEWER AND NOTIFY ENGINEER OF ANY DISCREPANCIES PRIOR TO ANY INSTALLATIONS.
3. CONTRACTOR TO CONTACT CITY ENGINEERING DEPARTMENT AT LEAST 48 HOURS PRIOR TO CONNECTION TO EXISTING PUBLIC SANITARY SEWER.

WATERMAIN NOTES

1. PROPOSED WATERMAIN PIPE SHALL BE:
 - 1.1. DUCTILE IRON PIPE (DIP) CLASS 52.
2. ALL WATERMAIN VALVES SHALL BE OPERATED ONLY BY ELK RIVER MUNICIPAL UTILITY FORCES (763.635.1361)
3. FIELD VERIFY SIZE, ELEVATION, AND LOCATION OF EXISTING WATERMAIN AND NOTIFY ENGINEER OF ANY DISCREPANCIES PRIOR TO ANY INSTALLATIONS.
4. MAINTAIN A MINIMUM OF 7.5 FEET OF COVER OVER ALL WATERMAIN PIPE.
5. PROVIDE PREFORMED INSULATION, PPG FOAMGLASS, OR APPROVED EQUAL WHERE SANITARY SEWER OR STORM SEWER CROSSES WITHIN 18" OF WATERMAIN.



NOTE: CONTRACTOR TO PROVIDE TRAFFIC CONTROL PLAN IN ACCORDANCE WITH "MINNESOTA TEMPORARY TRAFFIC CONTROL FIELD MANUAL" FOR DISRUPTION OF TRAIL DURING CONSTRUCTION



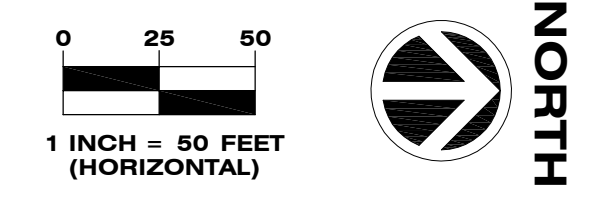
AS-BUILD GATE VALVE TIES
(SCALE = 1:20)
THIS DETAIL ONLY

185TH CIRCLE NW

RESTORE STREET & TRAIL TO EXIST. OR BETTER SECTION - REPLACE CURB W/ EQUIV. (SAWCUT)



PLOWE
ENGINEERING, INC.
6776 LAKE DRIVE
SUITE 110
LINO LAKES, MN 55014
PHONE: (651) 361-8210
FAX: (651) 361-8701



RIVERPLACE SECOND ADDITION
ELK RIVER, MINNESOTA
PLAN/PROFILE
SANITARY SEWER & WATERMAIN

I HEREBY CERTIFY THAT THIS PLAN WAS PREPARED BY ME OR UNDER MY DIRECT SUPERVISION AND THAT I AM A DULY LICENSED PROFESSIONAL ENGINEER UNDER THE LAWS OF THE STATE OF MINNESOTA.

Adam Sinkel
ADAM SINKEL
DATE: 07.29.2020 LIC. NO. 43963

DATE	REVISION DESCRIPTION
6-15-18	CITY REVIEW COMMENTS; CONSTRUCTION PLANS
7-11-18	FINAL PLAT SUBMITTAL
8-7-18	GRADES ADJ.
7-11-19	FINAL PLANS
10-3-19	SEW/WAT. ADJ. PER CITY
7-29-20	RECORD DRAWINGS

DRAWN BY: A.G. DESIGN BY: A.G.
CHCKD BY: C.W.P. PROJ. NO. 18-1747
C3.3