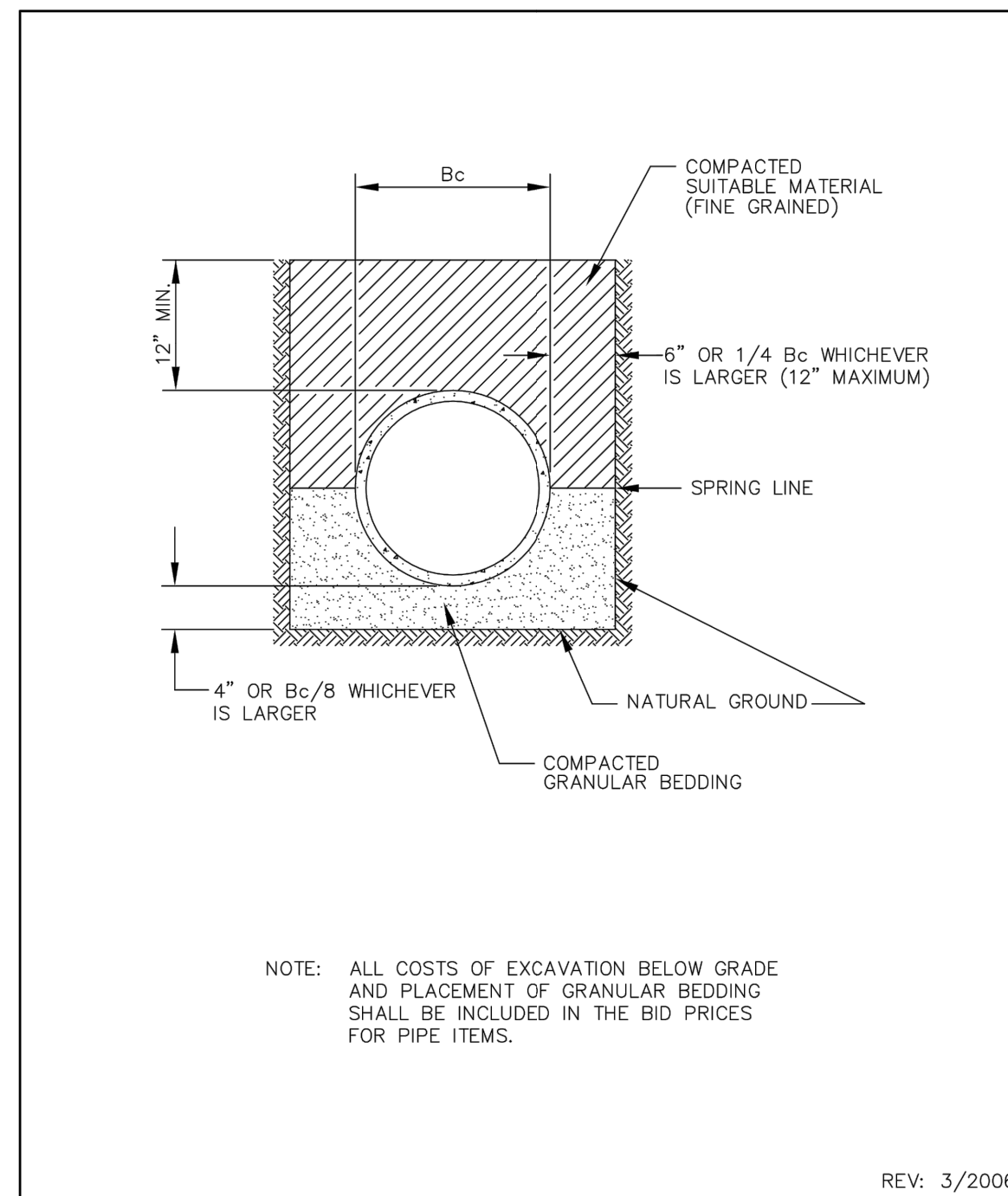
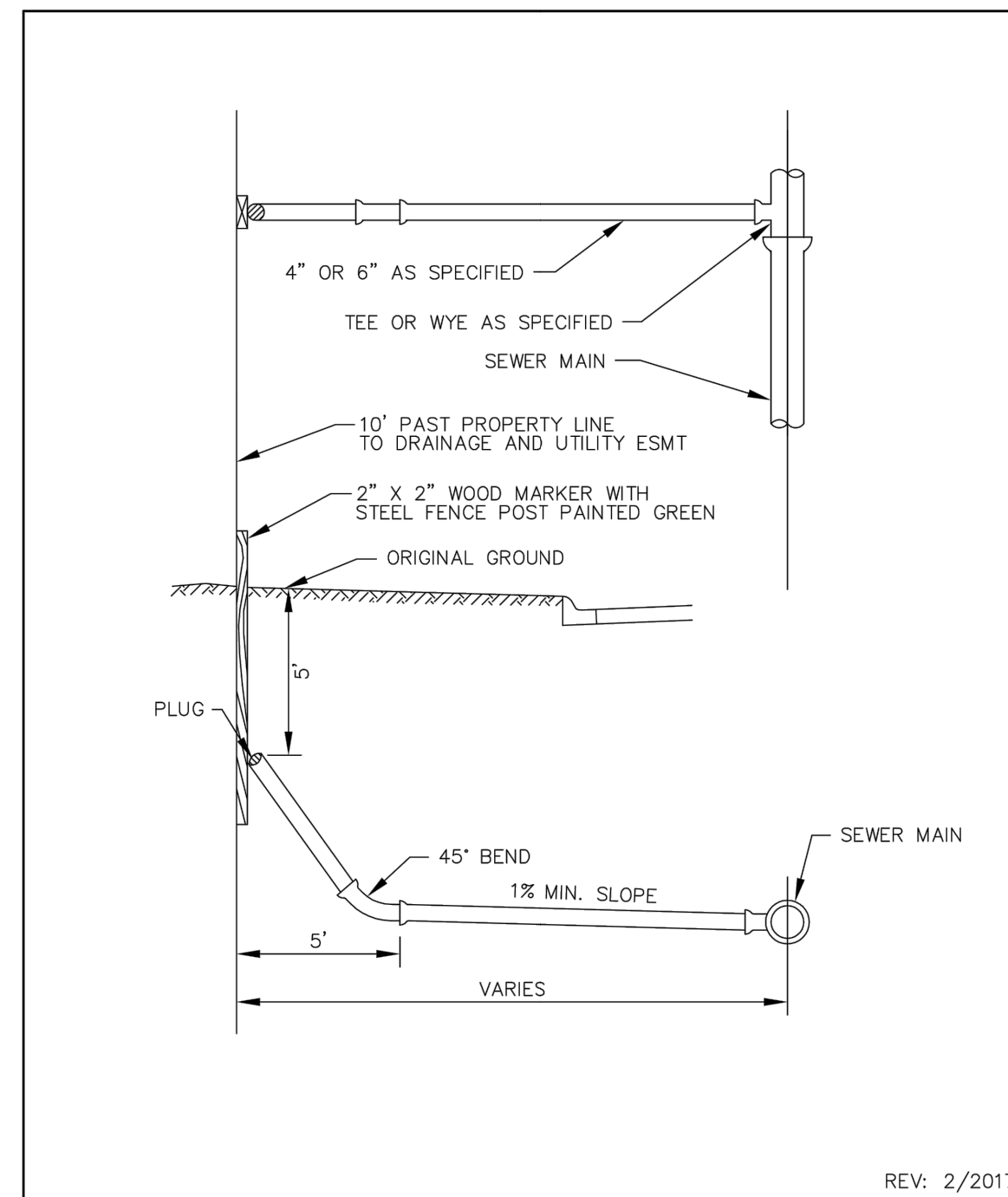


# RECORD DRAWING



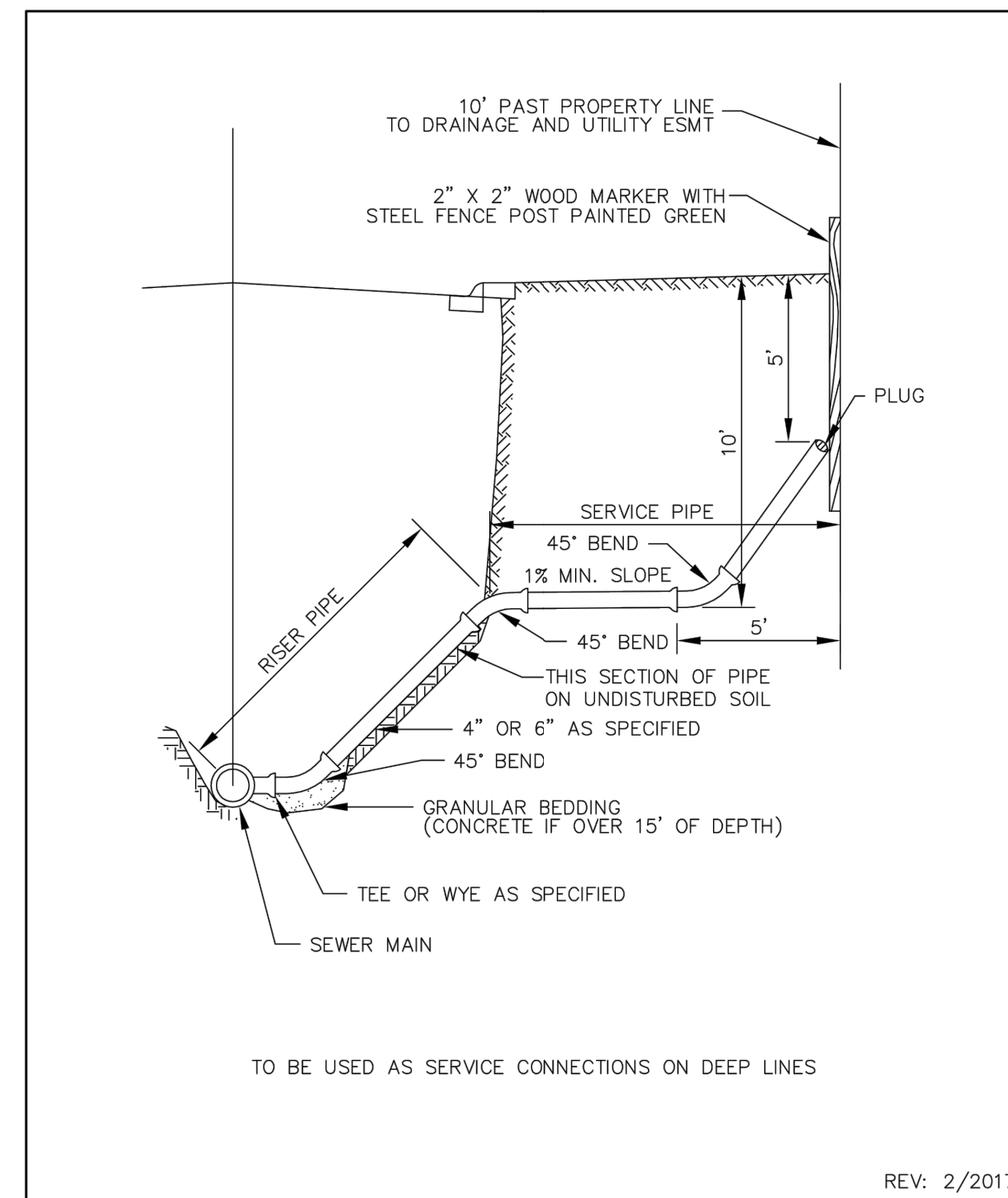
REV: 3/2006

**CLASS B PIPE BEDDING**  
STANDARD PLATE NO. **4006**



REV: 2/2017

**TYPICAL HOUSE SERVICE**  
STANDARD PLATE NO. **4007**



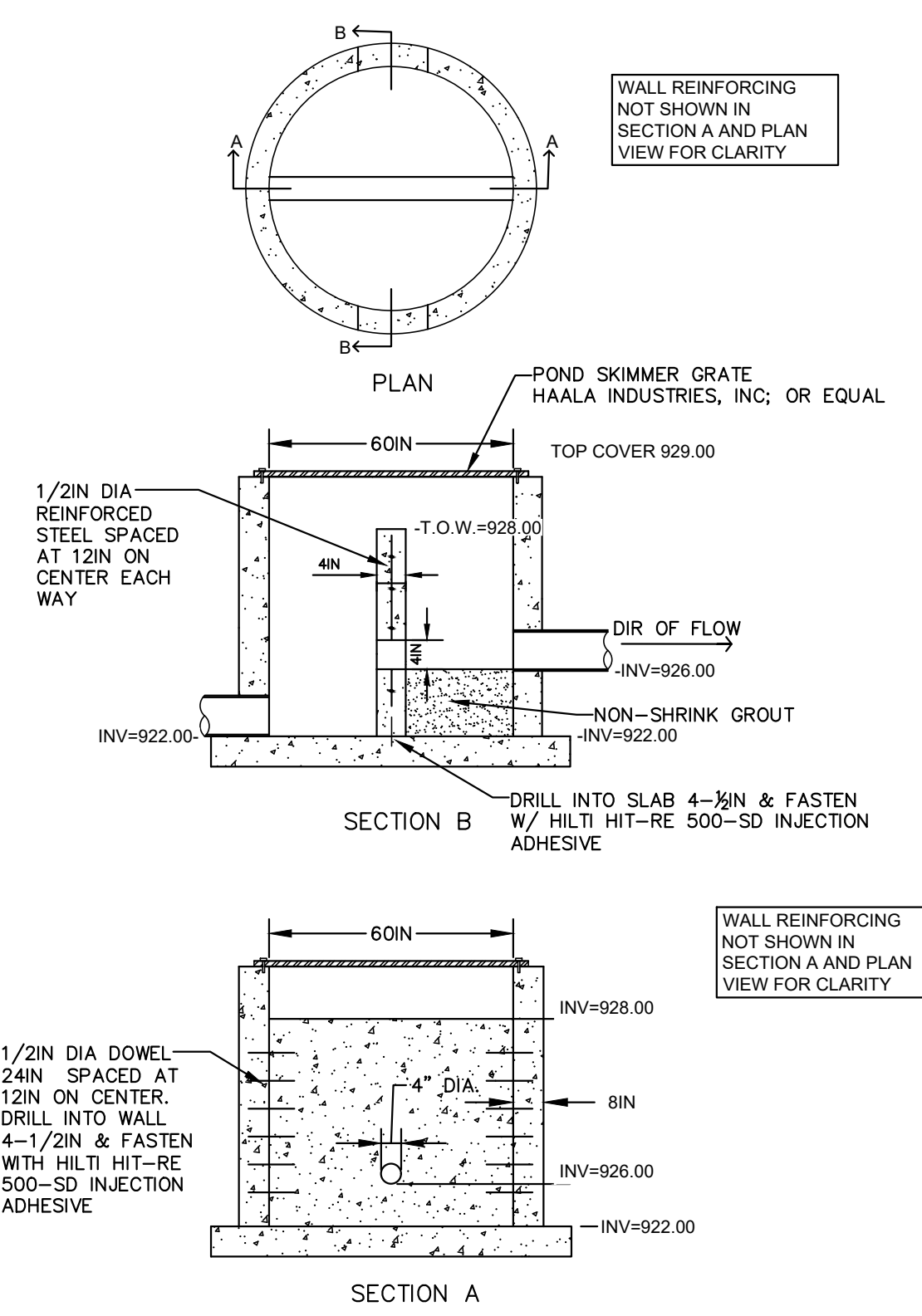
REV: 2/2017

**SERVICE RISER SECTION**  
STANDARD PLATE NO. **4008**

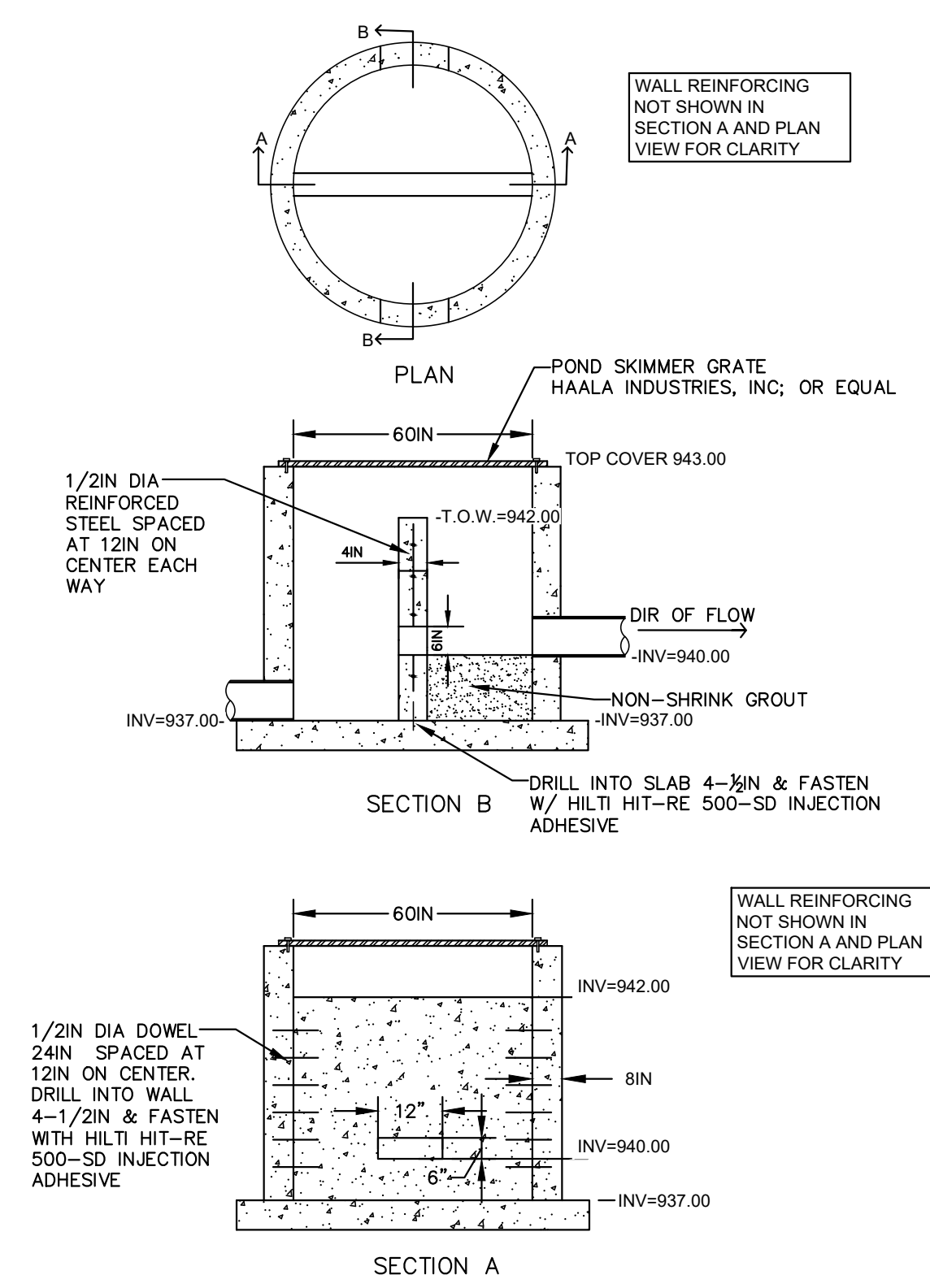
REV. NO.	DATE	DESCRIPTION
1	02/22/2021	DRAWINGS ISSUED TO CITY
2	03/12/2021	DRAWINGS REVISED PER CITY REVIEW
3	03/30/2021	MPCA REVIEW
4	04/21/2021	FINAL CONSTRUCTION PLANS
5	05/14/2021	DRAWINGS REVISED PER 2ND CITY REVIEW
6	06/30/2021	ADDENDUM 1
	04/18/2022	RECORD AS-BUILT DRAWINGS

DATE: 02/22/2021  
 DESIGN BY: MJM  
 DRAWN BY: MJM  
 CHECKED BY: CJD  
 DWG FILE: DETAILS  
 FILE NO.: 21-0046.00

I hereby certify that this plan, specification, or report was prepared by me or under my direct supervision and that I am a duly Licensed Professional Engineer under the laws of the State of Minnesota.  
 Signed: Christopher J. Dahn  
 Date: 04/18/2022 Lic. No. 68628



**STORMWATER CONTROL STRUCTURE 1.0**  
N.T.S.



**STORMWATER CONTROL STRUCTURE 3.0**  
N.T.S.

**BOGART, PEDERSON & ASSOCIATES, INC.**  
 LAND SURVEYING  
 ENVIRONMENTAL SERVICES  
 13076 FIRST STREET, BECKER, MN 55309-9322  
 TEL: 763-262-8822 FAX: 763-262-8844

**TRANQUIL MEADOWS**  
**RESIDENTIAL DEVELOPMENT**  
**PROVIDENCE S&S, LLC**  
 City of Elk River, Sherburne County, MN  
**CONSTRUCTION DETAILS**

N:\Projects\Comm21-046.00 RainfallSurvey\Map\ASB\Cover Sheet.dwg 3:38 PM 5/9/2022