

# TRANQUIL MEADOWS RESIDENTIAL DEVELOPMENT

## PROVIDENCE S&S, LLC

18990 TWIN LAKES PARKWAY NW  
CITY OF ELK RIVER, SHERBURNE COUNTY, MN

MAY, 2021

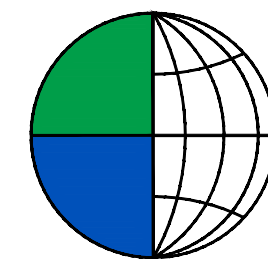
### FINAL CONSTRUCTION PLANS

### RECORD DRAWING

#### SHEET INDEX:

PRELIMINARY PLAT	
DEMOLITION PLAN	C1
SITE PLAN	C2
GRADING PLAN	C3
UTILITY PLAN	C4
STREET & STORM / PLAN & PROFILE	C5-C6
SANITARY & WATERMAIN / PLAN & PROFILE	C7-C10
SIGNAGE PLAN	C11
EROSION CONTROL PLAN	C12
SWPPP NARRATIVE	C13
CONSTRUCTION DETAILS	C14-C19
LANDSCAPING PLAN	C20

#### CIVIL & SURVEY PLANS PREPARED BY:

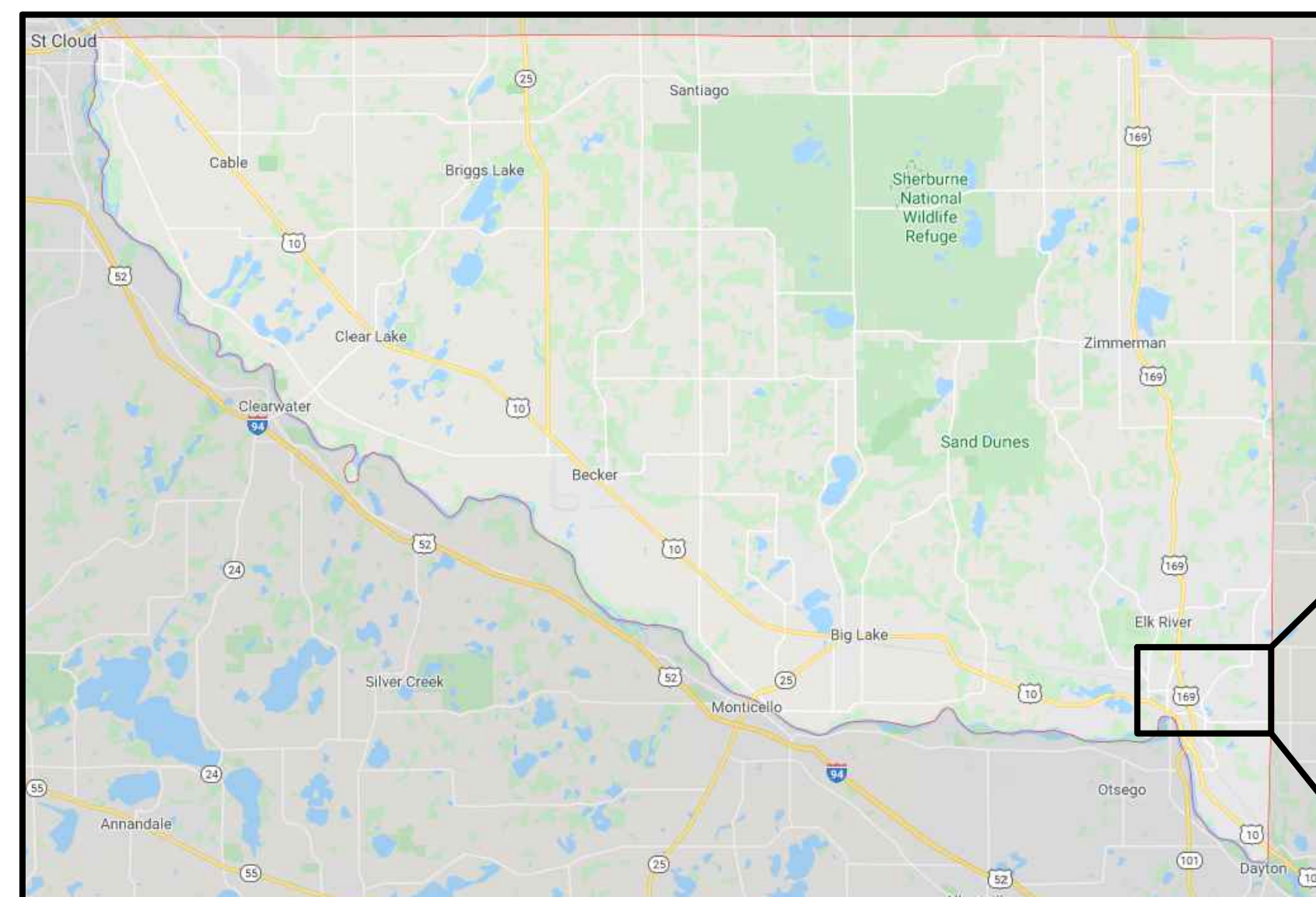


**Bogart, Pederson  
& Associates, Inc.**

CIVIL ENGINEERING  
LAND SURVEYING  
ENVIRONMENTAL SERVICES

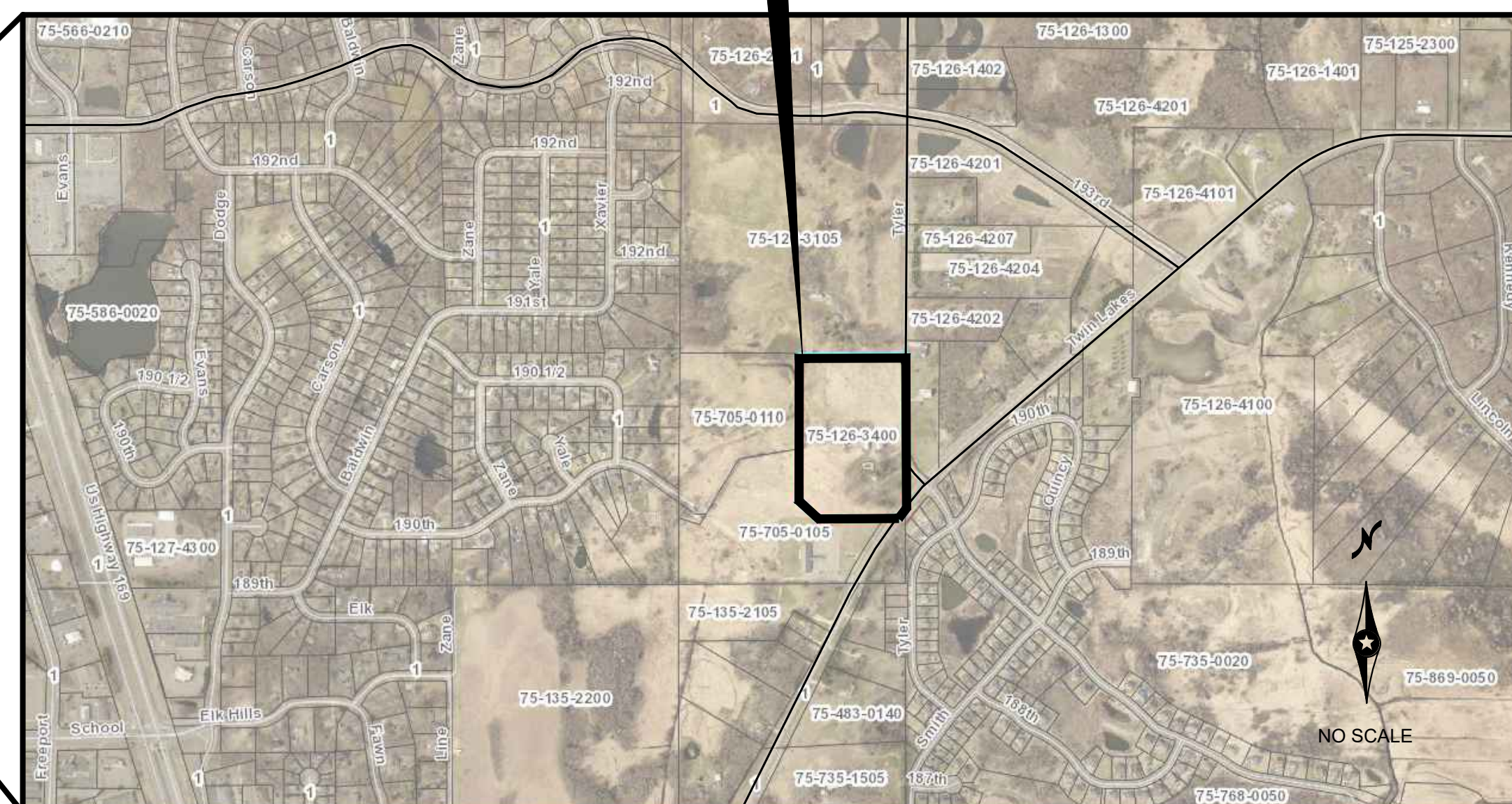
*Traditional Values • Creative Solutions*

RECORD DRAWING  
MEASURED BY: MWICK @ BPA (04-18-22)  
  
DRAWN BY MW @ BPA



SHERBURNE COUNTY, MINNESOTA

#### PROJECT LOCATION



VICINITY MAP

THIS PLAN HAS BEEN APPROVED FOR CONSTRUCTION  
BY CITY OF ELK RIVER ENGINEERING DEPARTMENT.  
THIS PLAN MEETS CURRENT CITY CONSTRUCTION  
STANDARDS.

Signed: \_\_\_\_\_  
JUSTIN P. FEMRITE, P.E.

Date: \_\_\_\_\_

REV NO.	DATE	DESCRIPTION
-	02/22/2021	DRAWINGS ISSUED TO CITY
1	03/12/2021	DRAWINGS REVISED PER CITY REVIEW
2	03/30/2021	MPCA REVIEW
3	04/21/2021	FINAL CONSTRUCTION PLANS
4	05/14/2021	DRAWINGS REVISED PER 2ND CITY REVIEW
5	06/30/2021	ADDENDUM 1