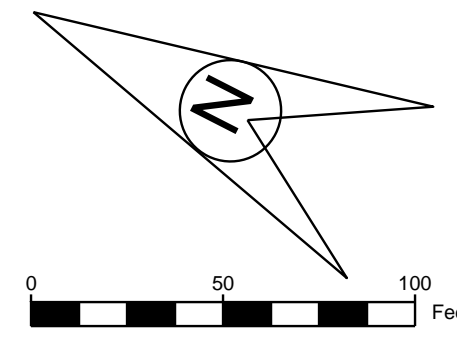


OUTLOT A



BENCHMARK:
TOP NUT HYD. AT THE
INTERSECTION OF YORK STREET
NW & YORK DRIVE NW
ELEV=960.34 (N.G.V.D. 1929)

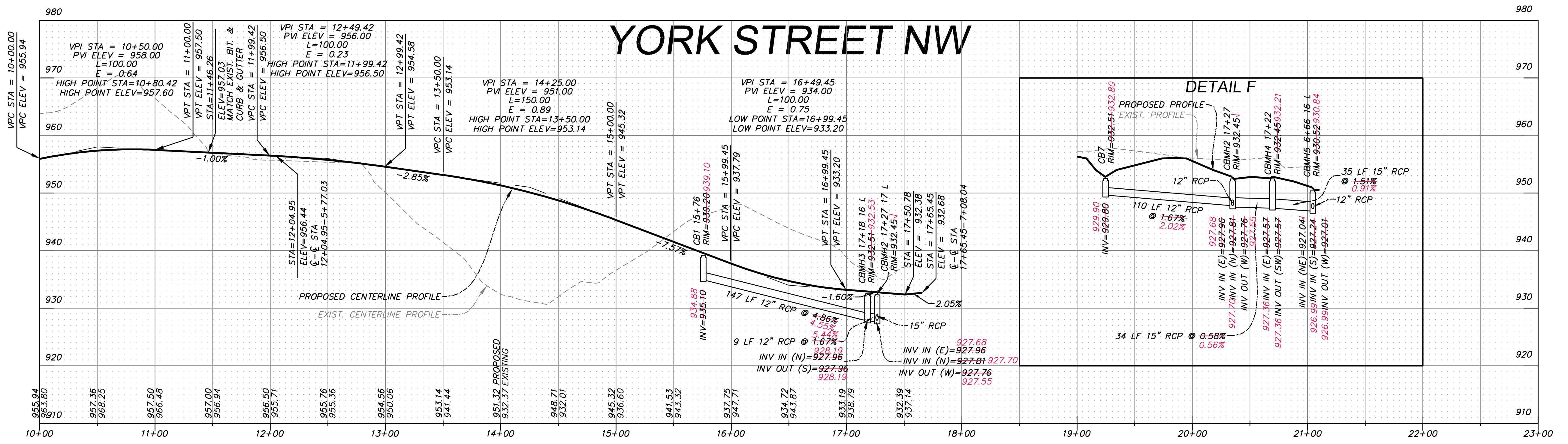
RECORD PLANS: 2-1-22
CONTRACTOR: BURSCHVILLE
CONSTRUCTION, INC.

STORM SEWER STRUCTURE SCHEDULE

STRUCTURE NO.	STRUCTURE SIZE	CASTING
CB1	24"x36"	NEENAH R-3067-V
CB2	24"x36"	NEENAH R-3067-V
CB3	24"x36"	NEENAH R-3067-VB
CB4	24"x36"	NEENAH R-3067-V
CB5	24"x36"	NEENAH R-3067-VB
CB6	24"x36"	NEENAH R-3067-V
CB7	27"Ø	NEENAH R-4342
CBMH1	48"Ø	NEENAH R-3067-V
CBMH2	48"Ø	NEENAH R-3067-V
CBMH3	48"Ø	NEENAH R-3067-V
CBMH4	48"Ø	NEENAH R-3067-V
CBMH5	48"Ø	NEENAH R-3067-V
CBMH6	48"Ø	NEENAH R-3067-VB
CBMH7	48"Ø	NEENAH R-3067-V
CBMH8	48"Ø	NEENAH R-3067-V
CBMH9	48"Ø	NEENAH R-3067-V
CBMH10	48"Ø	NEENAH R-3067-VB
MH1	48"Ø	NEENAH R-1733*
MH2	48"Ø	NEENAH R-1733*

*LABELED "STORM SEWER"

SCALES:
1"=50' HOR
1"=10' VER



REV. NO.	DATE	BY	DESCRIPTION

DESIGNED DRAWN
C.S.O. T.J.B.
I hereby certify that this plan, specification, or report was prepared by me or under my direct supervision and that I am a duly Licensed Professional Engineer under the laws of the State of Minnesota.
CHECKED
C.S.O. *Cara M. Schwahn Otto*
Date: 4-8-22

OTTO ASSOCIATES
Engineers & Land Surveyors, Inc.
www.ottoassociates.com
9 West Division Street
Buffalo, MN 55313
(763)682-4727
Fax: (763)682-3522

PRESTIGIOUS WOODLAND HILLS FIFTH ADDITION
BENZINGER PROPERTIES
ELK RIVER, MN

STREET & STORM SEWER PLAN
YORK STREET NW
SHEET NO. 6 OF 13 SHEETS

PROJECT NO:
19-0318
DATE:
2-1-22