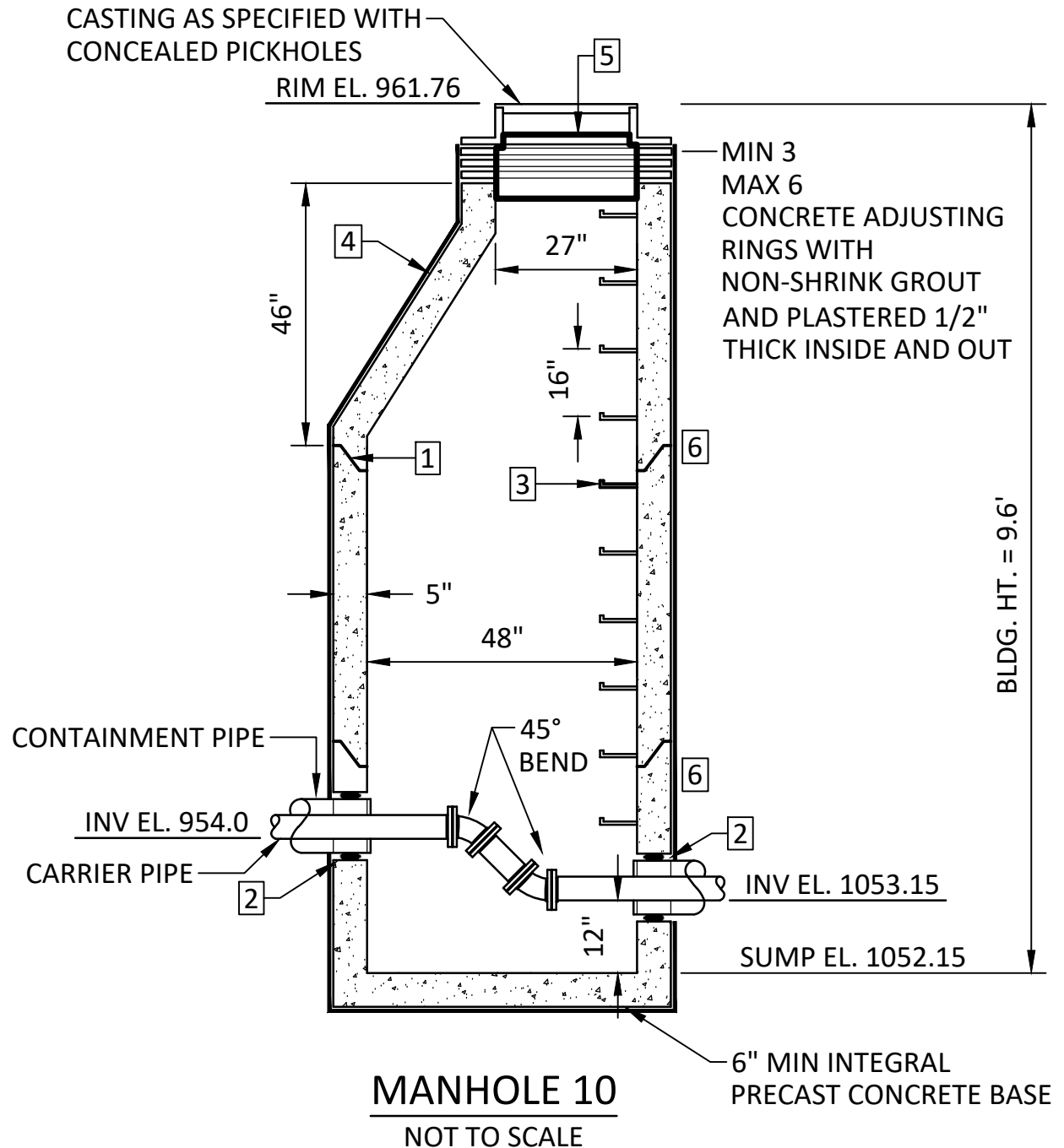


1. RUBBER GASKET (TYPICAL)
2. WALL PENETRATION SEAL TO BE APPROVED BY ENGINEER
3. STEEL REINFORCED PLASTIC STEPS SHALL BE A POLYPROPYLENE PLASTIC REINFORCED WITH A NO. 2 DEFORMED STEEL ROD GRADE 60
4. MnDOT TYPE "B" ECCENTRIC PRECAST CONCRETE CONE SECTION TYPICAL FOR ALL MANHOLES
5. PLACE INTERIOR CHIMNEY SEAL (WHEN SPECIFIED)
6. 6" WIDE, $\frac{1}{4}$ " THICK BITUMINOUS MASTIC WRAP FULL CIRCUMFERENCE (WHEN SPECIFIED)



CONTRACTOR: Minger Construction

RECORD PLAN

ZGN 12-22-2020