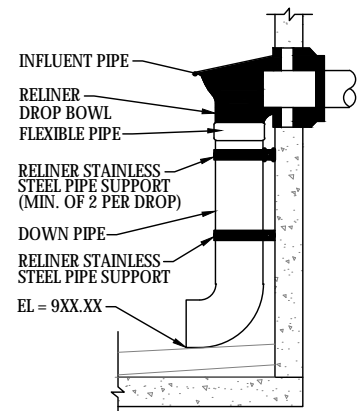
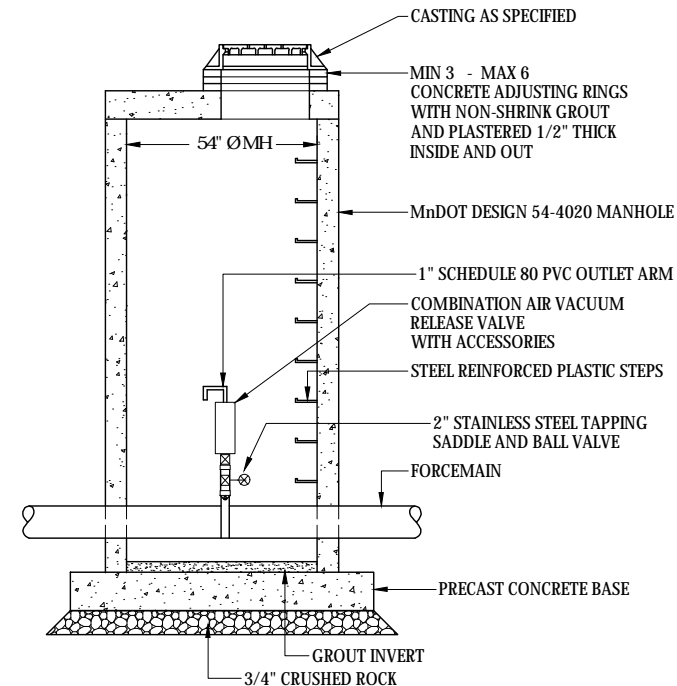


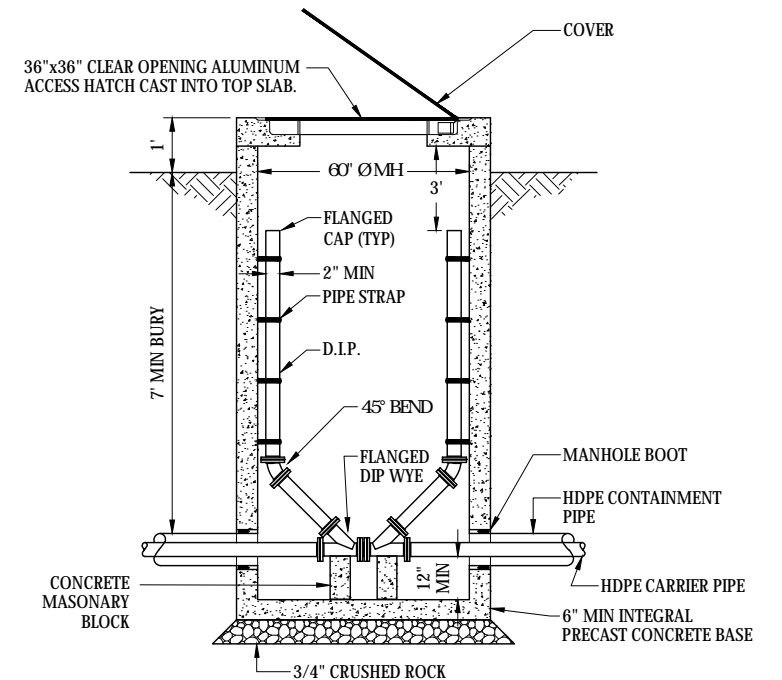
EXSITING SAN MH 1
INSIDE DROP
NOT TO SCALE



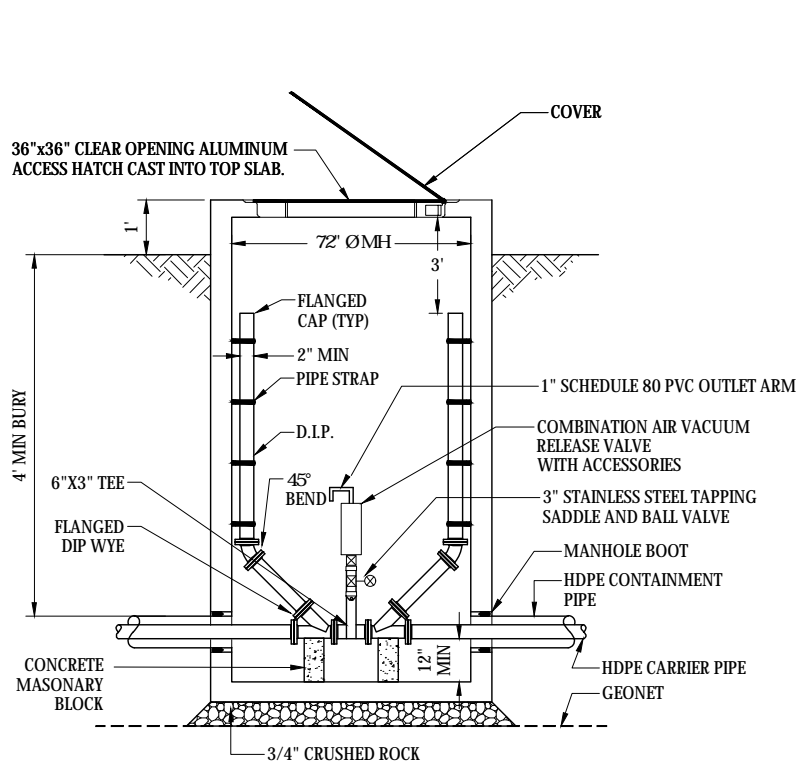
EXSITING SAN MH 1
INFLUENT BOWL SECTION VIEW
NOT TO SCALE



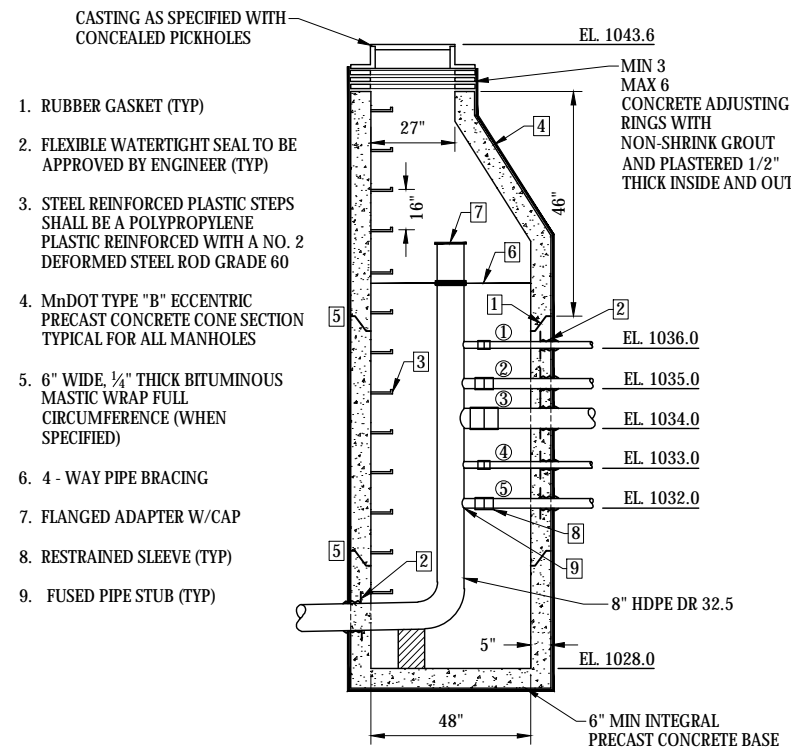
AIR RELEASE MANHOLE 2, 3, 4, 5, 6, 7, 8
DESIGN 4020
NOT TO SCALE



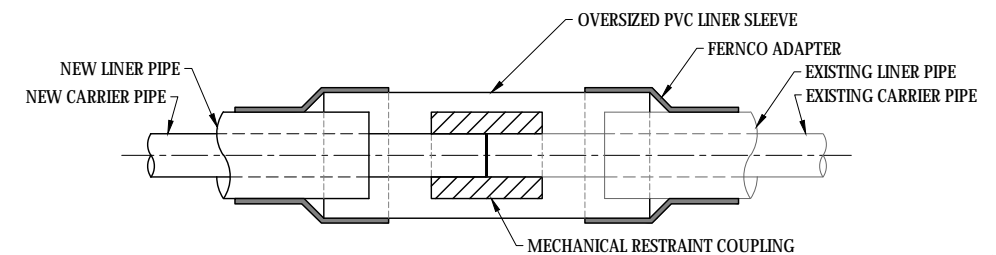
WITNESS/CLEAN-OUT MANHOLE 11 & 19
NOT TO SCALE



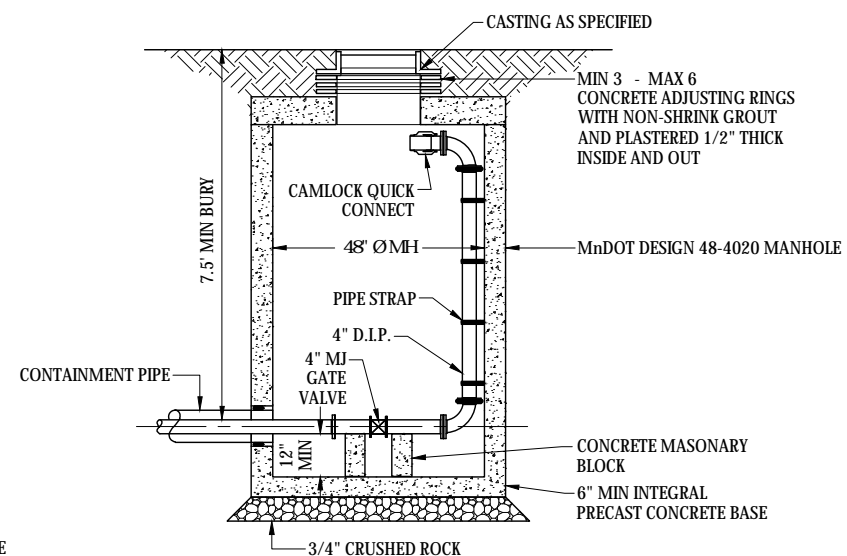
HDPE MANHOLE 16 & 17
NOT TO SCALE



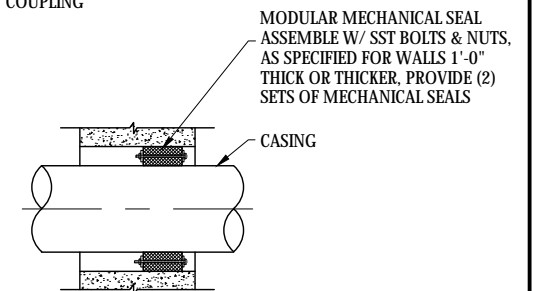
SANITARY MANHOLE 20
(SEE INSET "A", SHEET 19 FOR PIPE ANGLES)



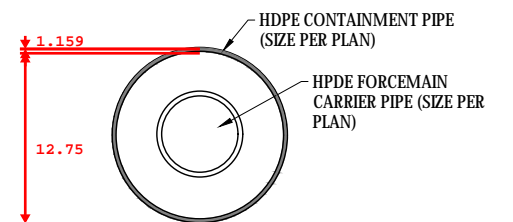
DUAL WALL PIPE CONNECTION
NOT TO SCALE



LOAD-OUT MANHOLE W/ VALVE 21
NOT TO SCALE



WALL PENETRATION SEAL
NOT TO SCALE



DUAL CONTAINMENT FORCEMAIN DETAIL
NOT TO SCALE

© Bolton & Menk, Inc. 2019. All Rights Reserved.
REVISION 1: 01/25/2020, C.A. C.D. 11/25/2020, Aug. 3/7/2019 4:00:08 PM

CONTRACTOR: Minger Construction
RECORD PLAN
ZGN 12-22-2020

I HEREBY CERTIFY THAT THIS PLAN, SPECIFICATION, OR REPORT WAS PREPARED BY ME OR UNDER MY DIRECT SUPERVISION AND THAT I AM A DULY LICENSED PROFESSIONAL ENGINEER UNDER THE LAWS OF THE STATE OF MINNESOTA.
Kevin F. Bittner
Kevin F. Bittner
LIC. NO. 21814 DATE 03/01/2019

BOLTON & MENK

7533 SUNWOOD DR. NW, SUITE 206
RAMSEY, MINNESOTA 55303
Phone: (763) 433-2851
Email: Ramsey@bolton-menk.com
www.bolton-menk.com

DESIGNED	NO.	REVISION	DATE
KFB			
DRAWN			
KGA			
CHECKED			
KFB			
CLIENT PROJ. NO.			
R16.115896			

ELK RIVER LANDFILL INC.
WASTE WATER FORCEMAIN
DETAILS

SHEET
6
OF
46