

2 #5 DIAG. EA CORNER (TYP)

VALVE/
METER
VAULT

6" SCH 40 WELDED STEEL PIPE VENT WITH SEEPAGE COLLAR CAST INTO TOP SLAB. INCLUDE BIRD SCREEN.

1'-4"

2'-6" CLEAR OPENING

1'-6"

3'-0"

7'-8"

15'-8"

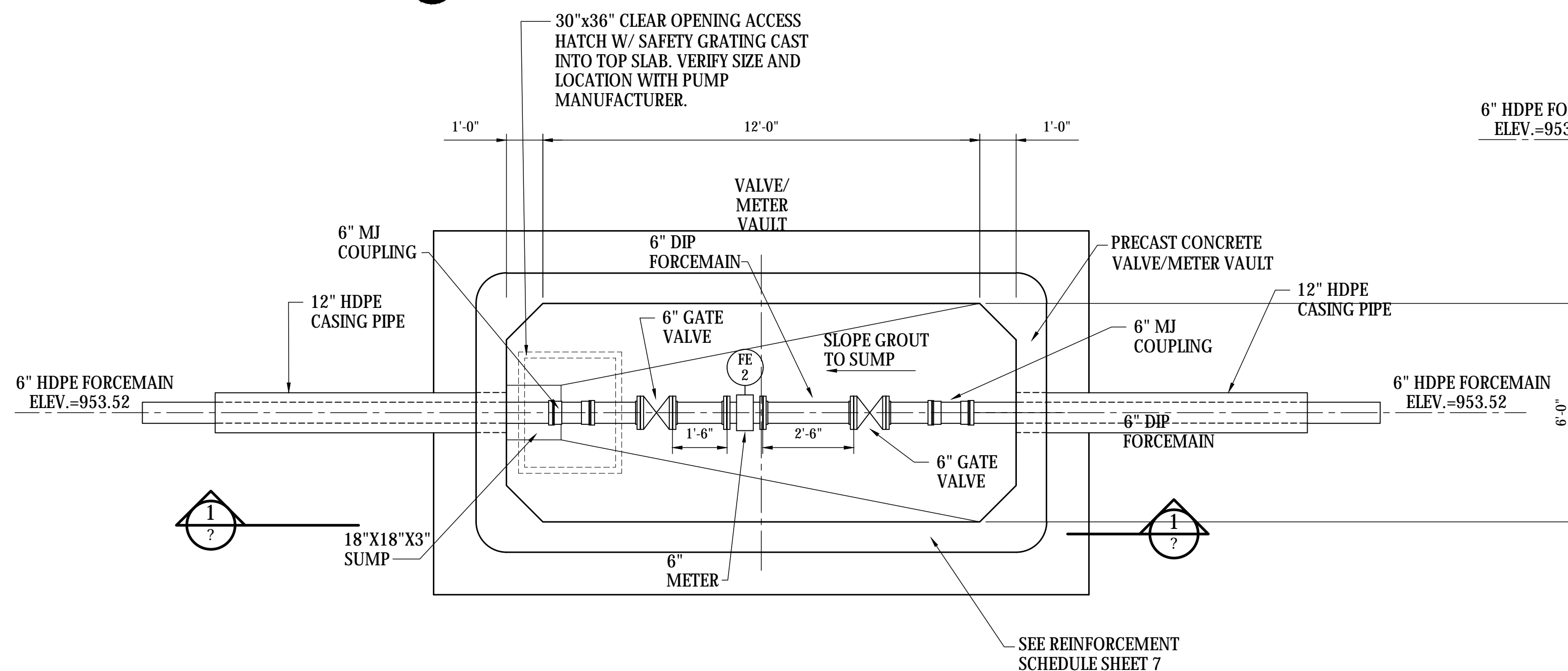
2 ADD'L #5 EA SIDE OF OPENING (TYP)

30"x36" CLEAR OPENING ACCESS HATCH W/ SAFETY GRATING CAST INTO TOP SLAB. VERIFY SIZE AND LOCATION WITH ENGINEER.

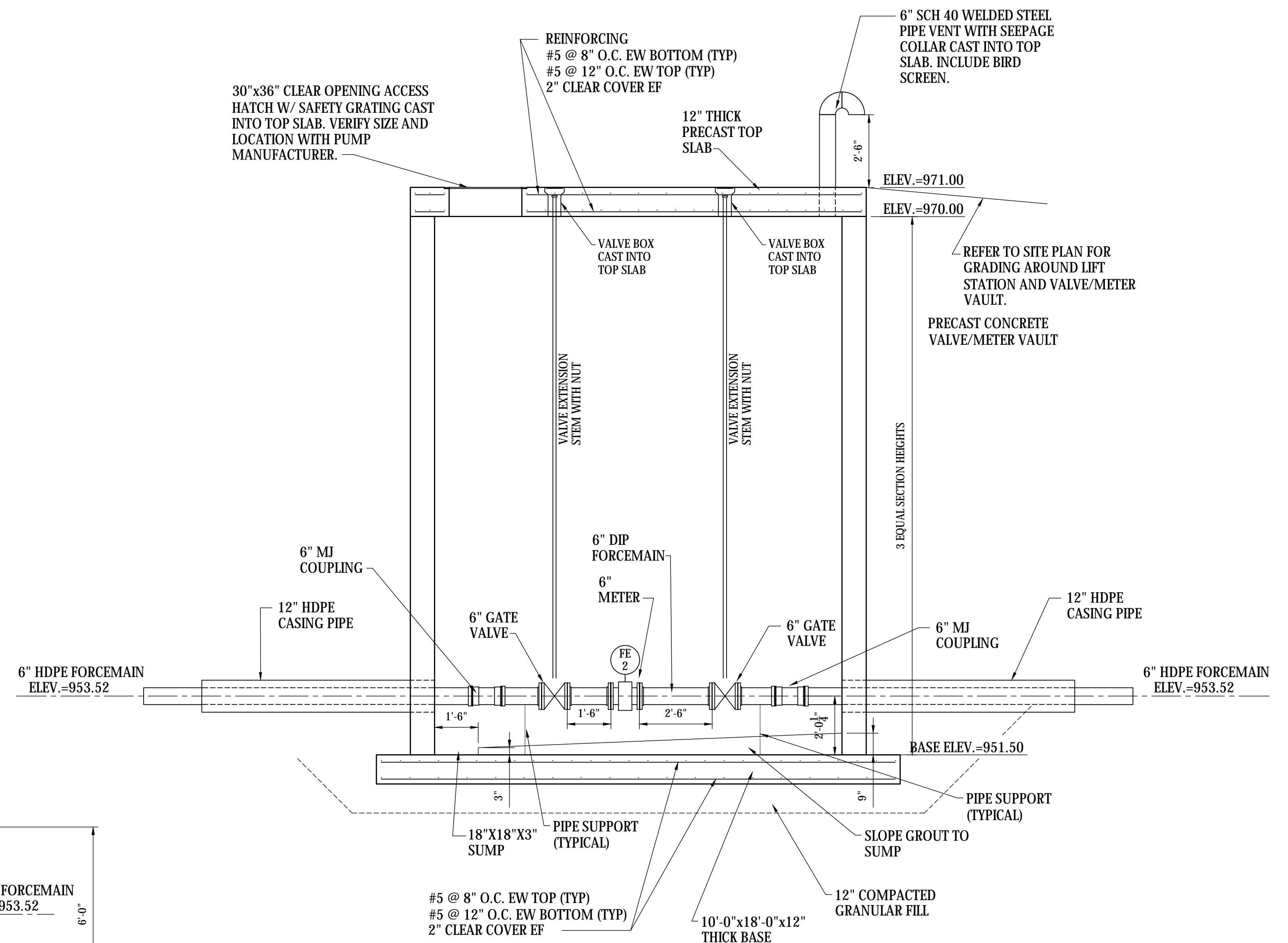
1
?

1
?

SCALE: 3/8"=1'-0"



SCALE: 3/8"=1'-0"



D# SCALE: 3/8"=1'-0"

NOTES:

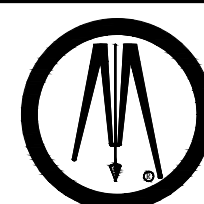
1. ALL INTERIOR PIPING IN WET WELL SHALL BE STAINLESS STEEL AS SHOWN.
2. ALL INTERIOR PIPING IN VALVE/METER VAULT SHALL BE FLANGED FITTINGS AS SHOWN.
3. ALL EXTERIOR PIPING SHALL BE MECHANICAL JOINT WITH MEGALUG RESTRAINT JOINTS.
4. FLEXIBLE WATERTIGHT SEAL TO BE PROVIDED AT ALL PIPE PENETRATIONS AT VALVE VAULT AND LIFT STATION. FLEXIBLE WATERTIGHT SEAL TO BE APPROVED BY ENGINEER.
5. CONTRACTOR SHALL VERIFY EXISTING FORCEMAIN ELEVATION.

0 1 2 3 4 6 8
Graphic Scale for 3/8"=1'-0"

I HEREBY CERTIFY THAT THIS PLAN, SPECIFICATION, OR REPORT WAS PREPARED BY ME OR UNDER MY DIRECT SUPERVISION AND THAT I AM A DULY LICENSED PROFESSIONAL ENGINEER UNDER THE LAWS OF THE STATE OF MINNESOTA.

SIGNATURE: Tejpal S. Bala TYPED OR PRINTED NAME: Tejpal Singh Bala

DATE: 03/01/2019 LIC. NO.: 49574

**BOLTON
& MENK**

7533 SUNWOOD DR NW, SUITE 206
RAMSEY, MINNESOTA 55303
Phone: (763) 433-2851
Email: Ramsey@bolton-menk.com
www.bolton-menk.com

DESIGNED	NO.	REVISION	DATE
TSB			
DRAWN			
TMJ			
CHECKED			
TSB			
CLIENT PROJ. NO.			
R16.115896			

ELK RIVER LANDFILL INC.
WASTE WATER FORCEMAIN
METER MANHOLE VAULT 13 PLAN & SECTION

SHEET
5
OF
16

© Bolton & Menk, Inc. 2019, All Rights Reserved
 H:\WASTEWATER PR181615896\CAD\ENV\Plant 3D\Waste Management Lift Station 1\Orthos\DWGs\Meter MH Vault 13.dwg 2/8/2020 9:49 AM 1322MM