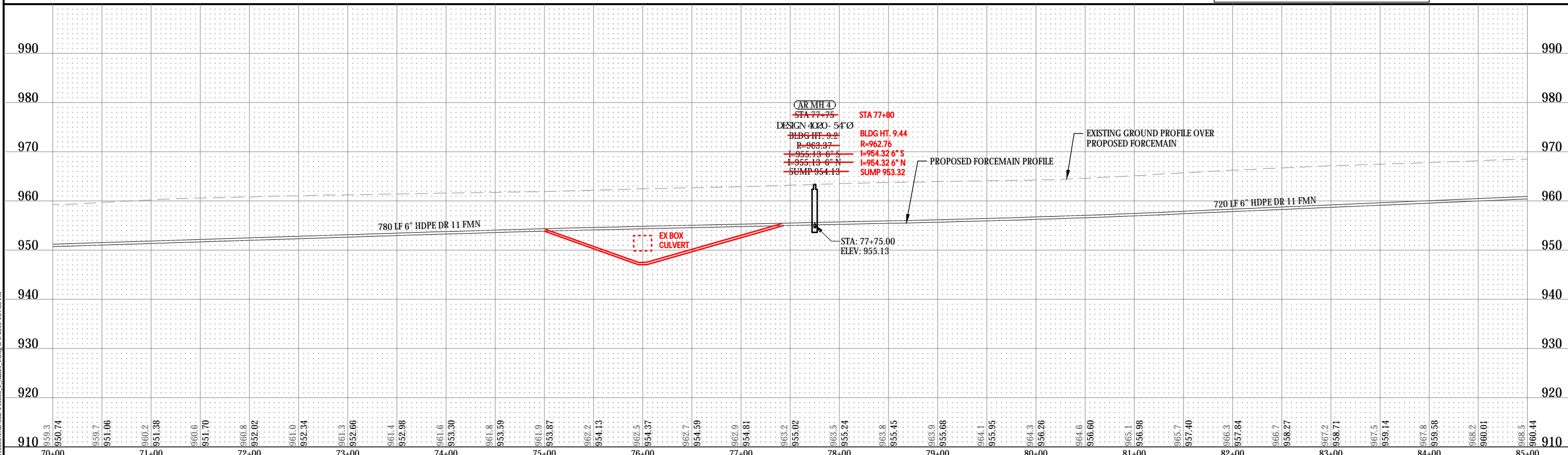
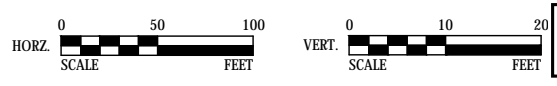


LEGEND	
	EROSION CONTROL BLANKET, SEED & FERTILIZER
	BITUMINOUS TRAIL PATCH
	PA
	EXISTING DRAINAGE FLOW

6" DRILL HDPE DR 11 FORCEMAIN



© Bolton & Menk, Inc. 2019. All Rights Reserved. C:\MS\STANDARD\PLAN\16115896_CAD\CAD115896_C_ALENK_Lay1.dwg, 3/1/2019, 4:07:35 PM



CONTRACTOR: Minger Construction
RECORD PLAN
ZGN 12-22-2020

I HEREBY CERTIFY THAT THIS PLAN, SPECIFICATION, OR REPORT WAS PREPARED BY ME OR UNDER MY DIRECT SUPERVISION AND THAT I AM A DULY LICENSED PROFESSIONAL ENGINEER UNDER THE LAWS OF THE STATE OF MINNESOTA.

 Kevin F. Bittner
 LIC. NO. 21814 DATE 03/01/2019



7533 SUNWOOD DR NW, SUITE 206
 RAMSEY, MINNESOTA 55303
 Phone: (763) 433-2851
 Email: Ramsey@bolton-menk.com
 www.bolton-menk.com

DESIGNED	NO.	REVISION	DATE
KFB			
DRAWN			
KGA			
CHECKED			
KFB			
CLIENT PROJ. NO.			
R16.115896			

ELK RIVER LANDFILL INC.
WASTE WATER FORCEMAIN
FORCEMAIN PLAN & PROFILE
 STA. 70+00 TO 85+00

SHEET
 25
 OF
 46