

CONNECT TO EXISTING MANHOLE. CONSTRUCT DROP MANHOLE.
(SEE DETAIL SHEET 5 FOR FORCEMAIN CONNECTION DETAIL)

BITUMINOUS TRAIL PATCH

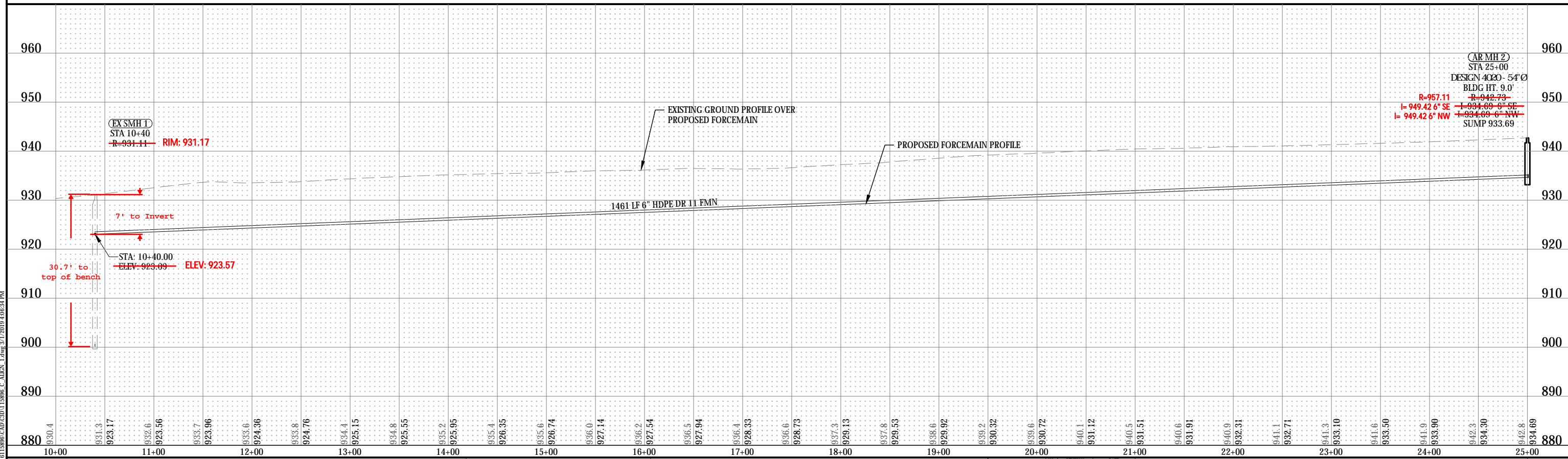
BITUMINOUS TRAIL PATCH

RESTORE AND MAINTAIN
TEMPORARY GRAVEL SURFACING
UNTIL BITUMINOUS PATCH
PAVEMENT IS INSTALLED
(TYPICAL AT ALL TRAIL PATCH
LOCATIONS)

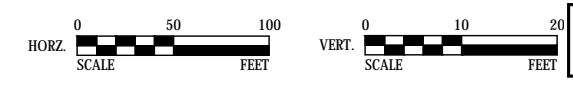
LEGEND

- EROSION CONTROL BLANKET, SEED & FERTILIZER
- BITUMINOUS TRAIL PATCH
- PREASSEMBLED SILT FENCE
- EXISTING DRAINAGE FLOW

6" DRILL HDPE DR 11 FORCEMAIN



© Bolton & Menk, Inc. 2019. All Rights Reserved. WASHINGTON, PA 15388. C. ALLEN, LDRG. 3/1/2019. 4:06:34 PM



CONTRACTOR: Minger Construction
RECORD PLAN
ZGN 12-22-2020

I HEREBY CERTIFY THAT THIS PLAN, SPECIFICATION, OR REPORT WAS PREPARED BY ME OR UNDER MY DIRECT SUPERVISION AND THAT I AM A DULY LICENSED PROFESSIONAL ENGINEER UNDER THE LAWS OF THE STATE OF MINNESOTA.

Kevin F. Bittner
Kevin F. Bittner
LIC. NO. 21814 DATE 03/01/2019



7533 SUNWOOD DR NW, SUITE 206
RAMSEY, MINNESOTA 55303
Phone: (763) 433-2851
Email: Ramsey@bolton-menk.com
www.bolton-menk.com

DESIGNED	NO.	REVISION	DATE
KFB			
DRAWN			
KGA			
CHECKED			
KFB			
CLIENT PROJ. NO.	R16.115896		

ELK RIVER LANDFILL INC.
WASTE WATER FORCEMAIN
FORCEMAIN PLAN & PROFILE
STA. 10+00 TO 25+00

SHEET
21
OF
46