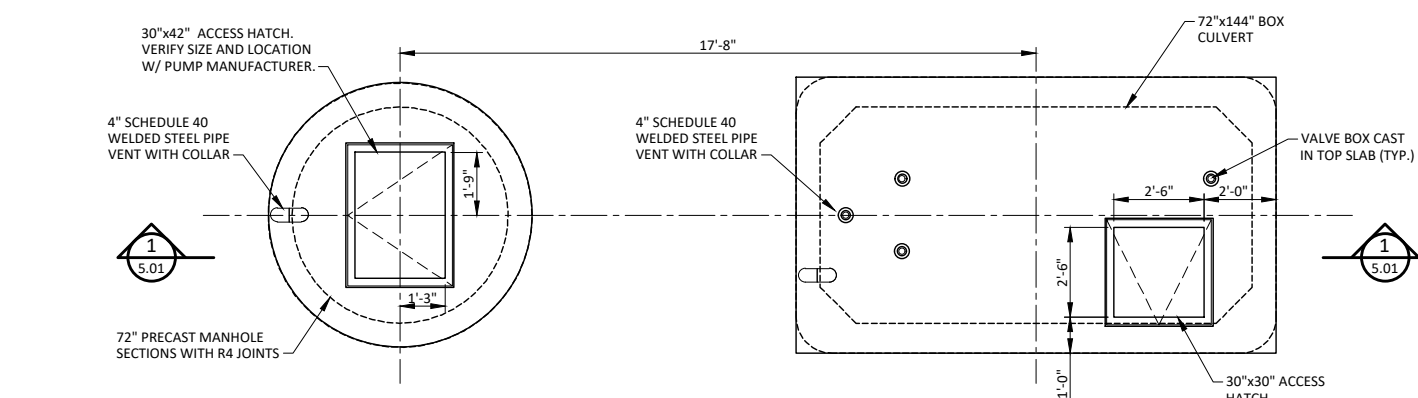
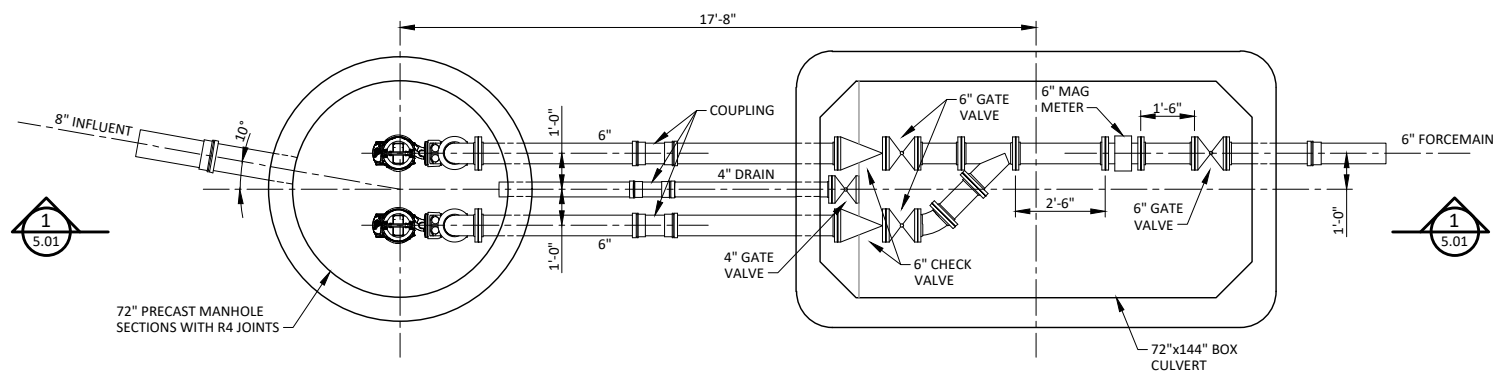


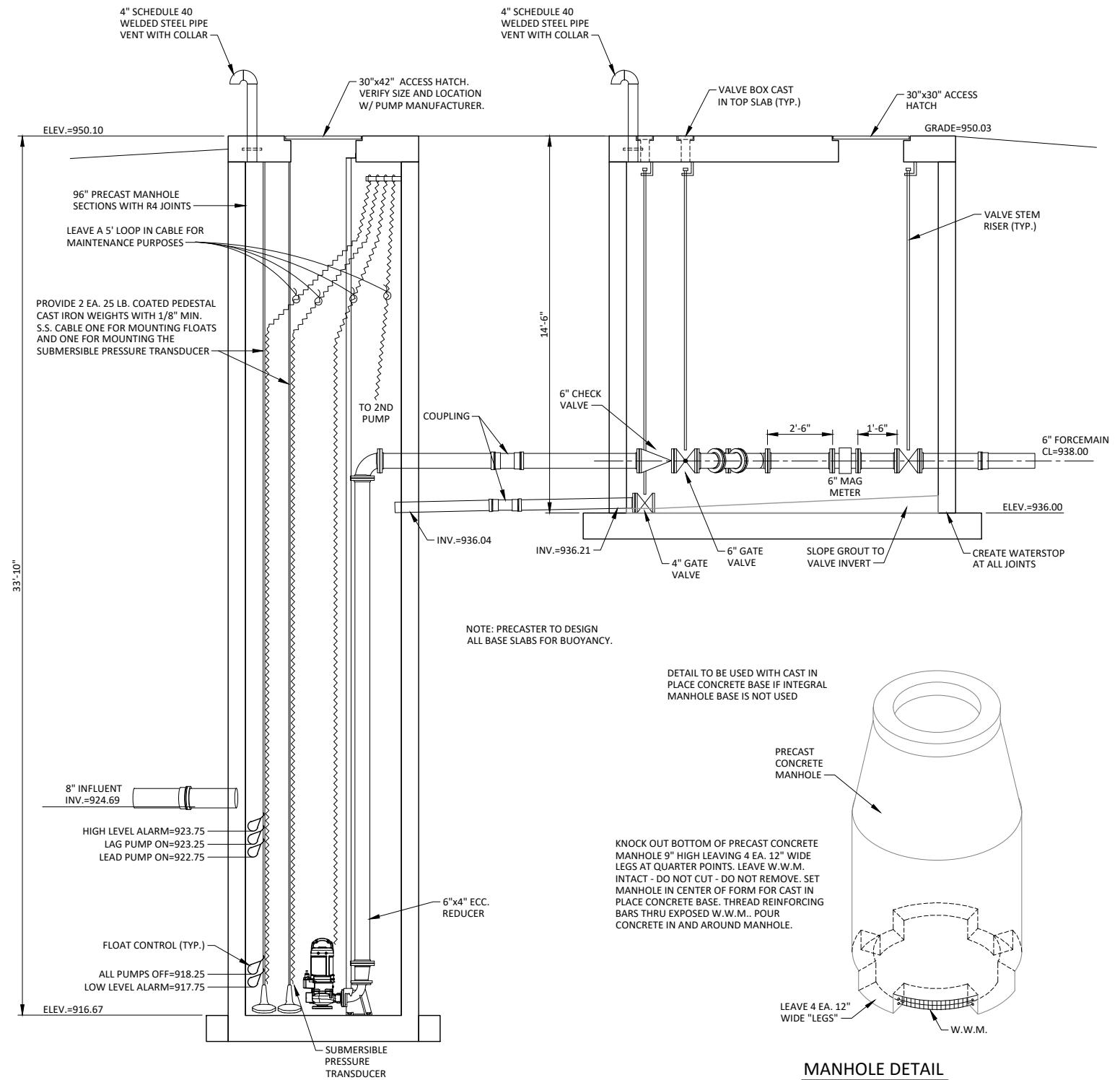
© Bolton & Menk, Inc. 2020. All Rights Reserved.
A:\ELK RIVER\122405\DWG\122405_501 Lift Station Plan.dwg 9/17/2020 10:18:22 AM



UPPER LEVEL PLAN
SCALE: 3/8"=1'-0"



PLAN
SCALE: 3/8"=1'-0"



NOTE: PRECASTER TO DESIGN
ALL BASE SLABS FOR BUOYANCY.

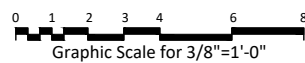
DETAIL TO BE USED WITH CAST IN
PLACE CONCRETE BASE IF INTEGRAL
MANHOLE BASE IS NOT USED

KNOCK OUT BOTTOM OF PRECAST
CONCRETE MANHOLE 9" HIGH LEAVING 4 EA. 12" WIDE
LEGS AT QUARTER POINTS. LEAVE W.W.M.
INTACT - DO NOT CUT - DO NOT REMOVE. SET
MANHOLE IN CENTER OF FORM FOR CAST IN
PLACE CONCRETE BASE. THREAD REINFORCING
BARS THRU EXPOSED W.W.M.. POUR
CONCRETE IN AND AROUND MANHOLE.

MANHOLE DETAIL
N.T.S.

1 SECTION
5.01 SCALE: 3/8"=1'-0"

THIS RECORD DRAWING HAS BEEN PREPARED, IN PART, BASED UPON INFORMATION FURNISHED BY OTHERS. WHILE THIS INFORMATION IS BELIEVED TO BE RELIABLE, BOLTON & MENK, INC. CANNOT ASSURE ITS ACCURACY, AND THUS IS NOT RESPONSIBLE FOR THE ACCURACY OF THIS RECORD DRAWING OR FOR ANY ERRORS OR OMISSIONS WHICH MAY HAVE BEEN INCORPORATED INTO IT AS A RESULT. THOSE RELYING ON THIS DOCUMENT ARE ADVISED TO OBTAIN INDEPENDENT VERIFICATION OF ITS ACCURACY BEFORE APPLYING IT FOR ANY PURPOSE.
DATE: 02/14/2022 COMPLETED BY: TJH



I HEREBY CERTIFY THAT THIS PLAN, SPECIFICATION, OR REPORT WAS PREPARED BY ME OR UNDER MY DIRECT SUPERVISION AND THAT I AM A DULY LICENSED PROFESSIONAL ENGINEER UNDER THE LAWS OF THE STATE OF MINNESOTA.
TEJPAL SINGH BALA
LIC. NO. 49574
DATE 09/08/2020



7533 SUNWOOD DR NW, SUITE 206
RAMSEY, MINNESOTA 55303
Phone: (763) 433-2851
Email: Ramsey@bolton-menk.com
www.bolton-menk.com



DESIGNED TSB
DRAWN WRH
CHECKED TSB
CLIENT PROJ. NO. R19.122405

ELK RIVER, MINNESOTA
WINDSOR PARK 3RD. ADDITION - SEWER EXTENSION
LIFT STATION PLAN & SECTION

SHEET
5
OF
16