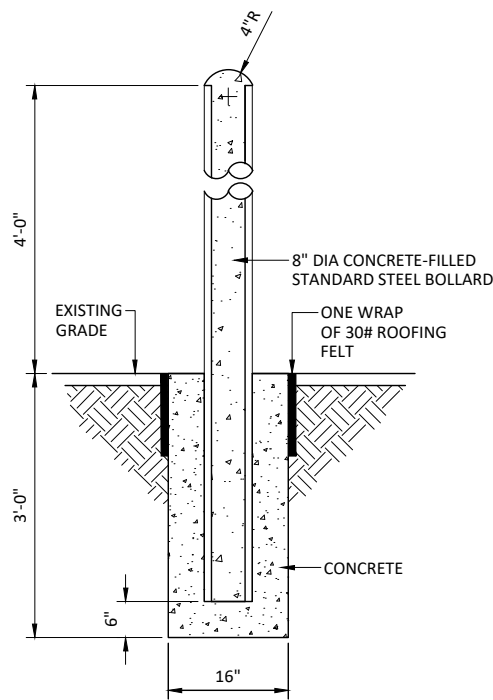
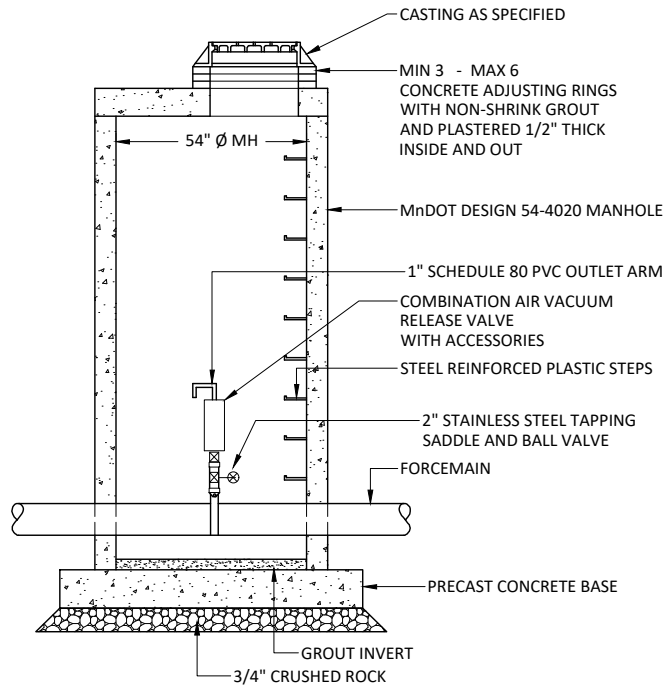


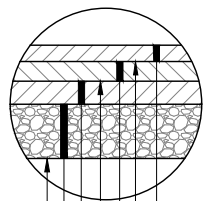
SANITARY MANHOLE
NOT TO SCALE



BOLLARD GUARD POST
NOT TO SCALE

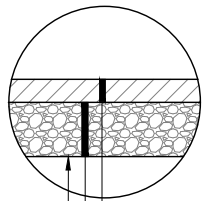


AIR RELEASE MANHOLE
DESIGN 4020
NOT TO SCALE



- 2.0" TYPE SP 12.5 WEARING COURSE, (SPWEA240B) (SPEC 2360)
- BITUMINOUS TACK COAT (SPEC 2357) (INCIDENTAL)
- 2.0" TYPE SP 12.5 WEARING COURSE, (SPWEA240B) (SPEC 2360)
- BITUMINOUS TACK COAT (SPEC 2357) (INCIDENTAL)
- 2.0" TYPE SP 12.5 NON WEARING COURSE, (SPNWB230B) (SPEC 2360)
- 12" AGGREGATE BASE, CL 5 (SPEC 2211) (INCIDENTAL)
- SUBGRADE PREPARATION (2112) (INCIDENTAL)

BITUMINOUS ROAD PATCHING - TYPICAL SECTION
COUNTY ROAD 33 - RANCH ROAD
NOT TO SCALE

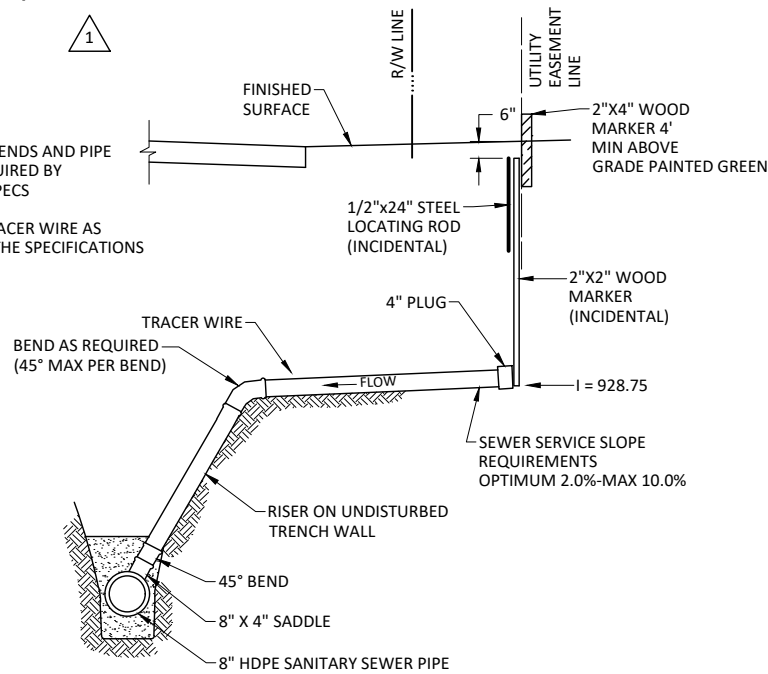


- 2.5" TYPE SP 9.5 WEARING COURSE MIXTURE (2,B) (SPWEA240B) (2360)
- 6" AGGREGATE BASE, CL 5 (SPEC 2211) (INCIDENTAL)
- SUBGRADE PREPARATION (2112) (INCIDENTAL)

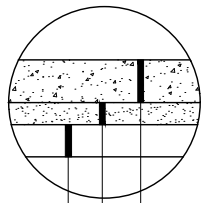
BITUMINOUS TRAIL PATCH - TYPICAL SECTION
GREAT NORTHERN TRAIL
NOT TO SCALE

NOTES:

- SADDLES, BENDS AND PIPE SIZES AS REQUIRED BY PLANS AND SPECS
- INSTALL TRACER WIRE AS DETAILED IN THE SPECIFICATIONS



SANITARY SEWER SERVICE RISER,
NEW CONSTRUCTION
NOT TO SCALE



- 7" CONCRETE PAVEMENT (2531)
- 4" AGGREGATE BASE, CL 5 (2211) (INCIDENTAL)
- SUBGRADE PREPARATION (2112) (INCIDENTAL)

CONCRETE PAVEMENT
NOT TO SCALE

THIS RECORD DRAWING HAS BEEN PREPARED, IN PART, BASED UPON INFORMATION FURNISHED BY OTHERS. WHILE THIS INFORMATION IS BELIEVED TO BE RELIABLE, BOLTON & MENK, INC. CANNOT ASSURE ITS ACCURACY, AND THUS IS NOT RESPONSIBLE FOR THE ACCURACY OF THIS RECORD DRAWING OR FOR ANY ERRORS OR OMISSIONS WHICH MAY HAVE BEEN INCORPORATED INTO IT AS A RESULT. THOSE RELYING ON THIS DOCUMENT ARE ADVISED TO OBTAIN INDEPENDENT VERIFICATION OF ITS ACCURACY BEFORE APPLYING IT FOR ANY PURPOSE.
DATE: 02/14/2022 COMPLETED BY: TJH