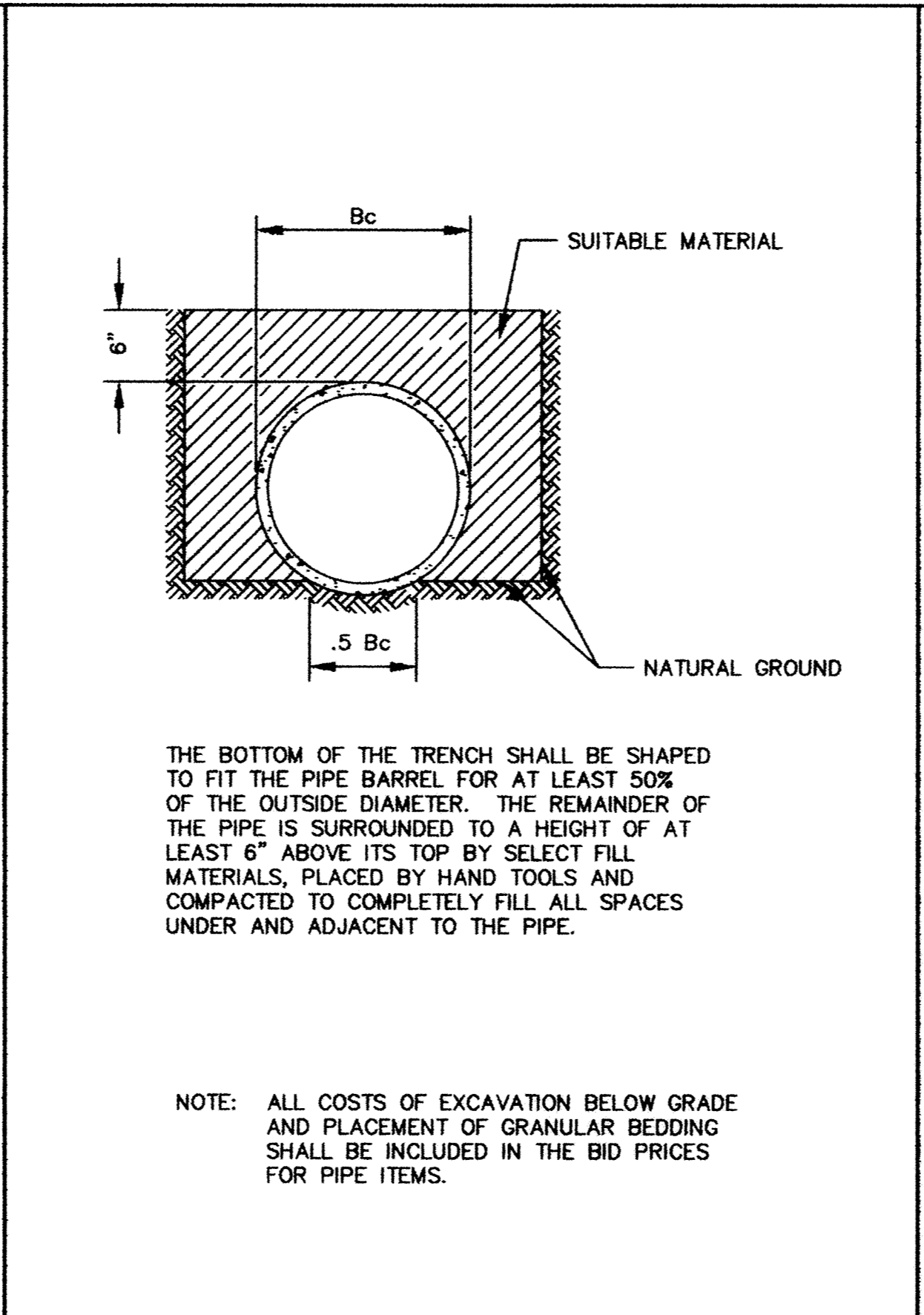
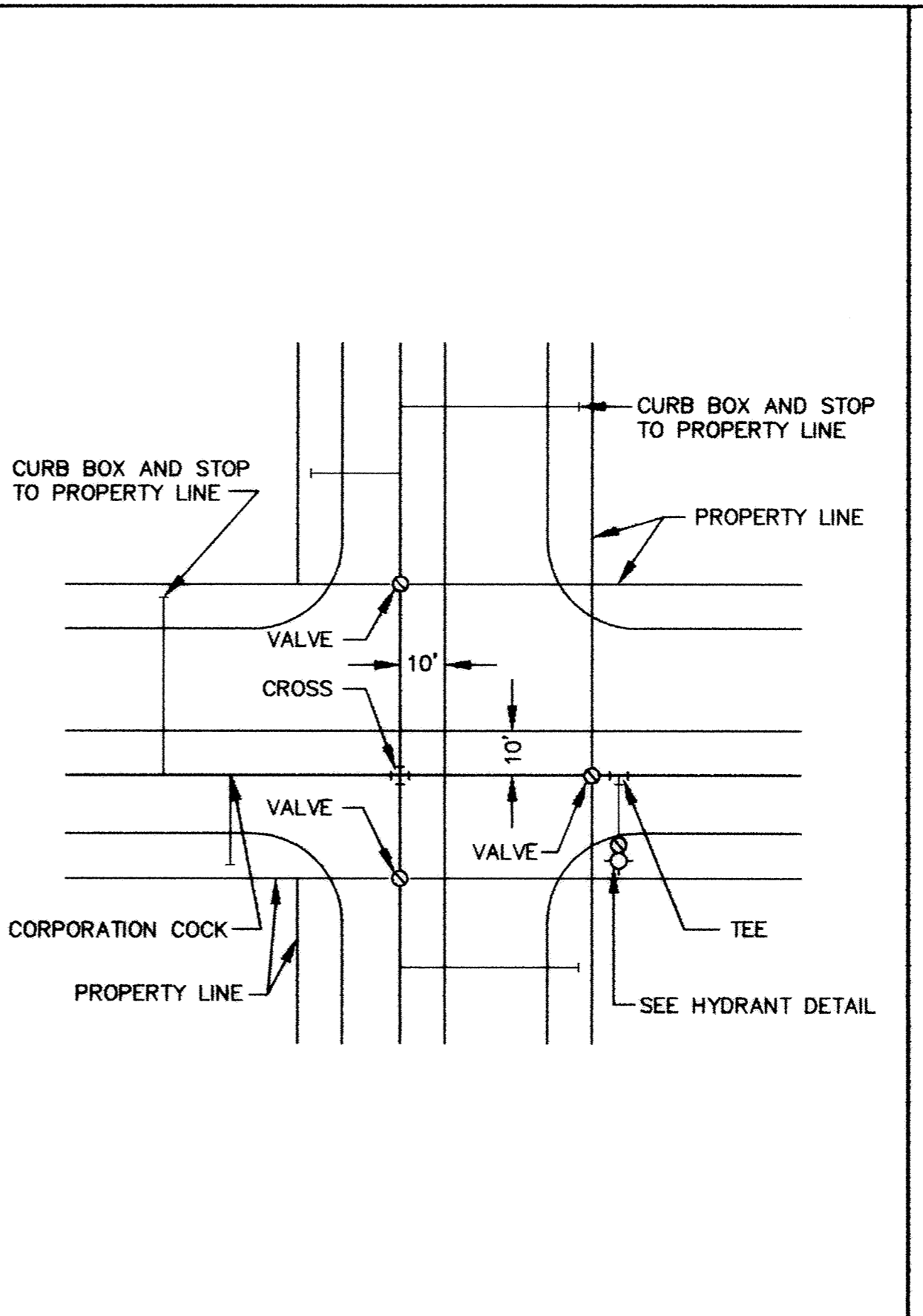


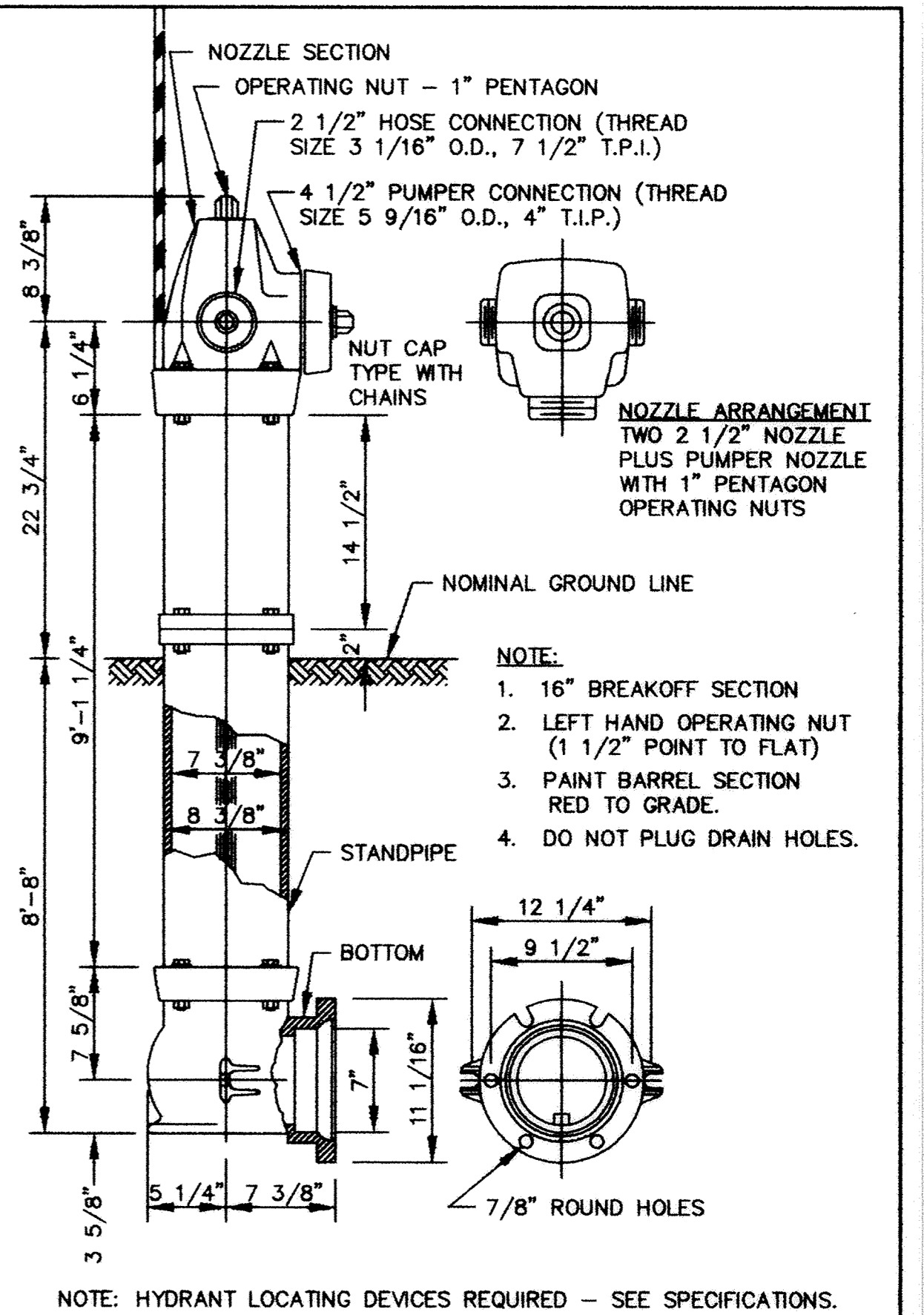
CLASS B PIPE BEDDING



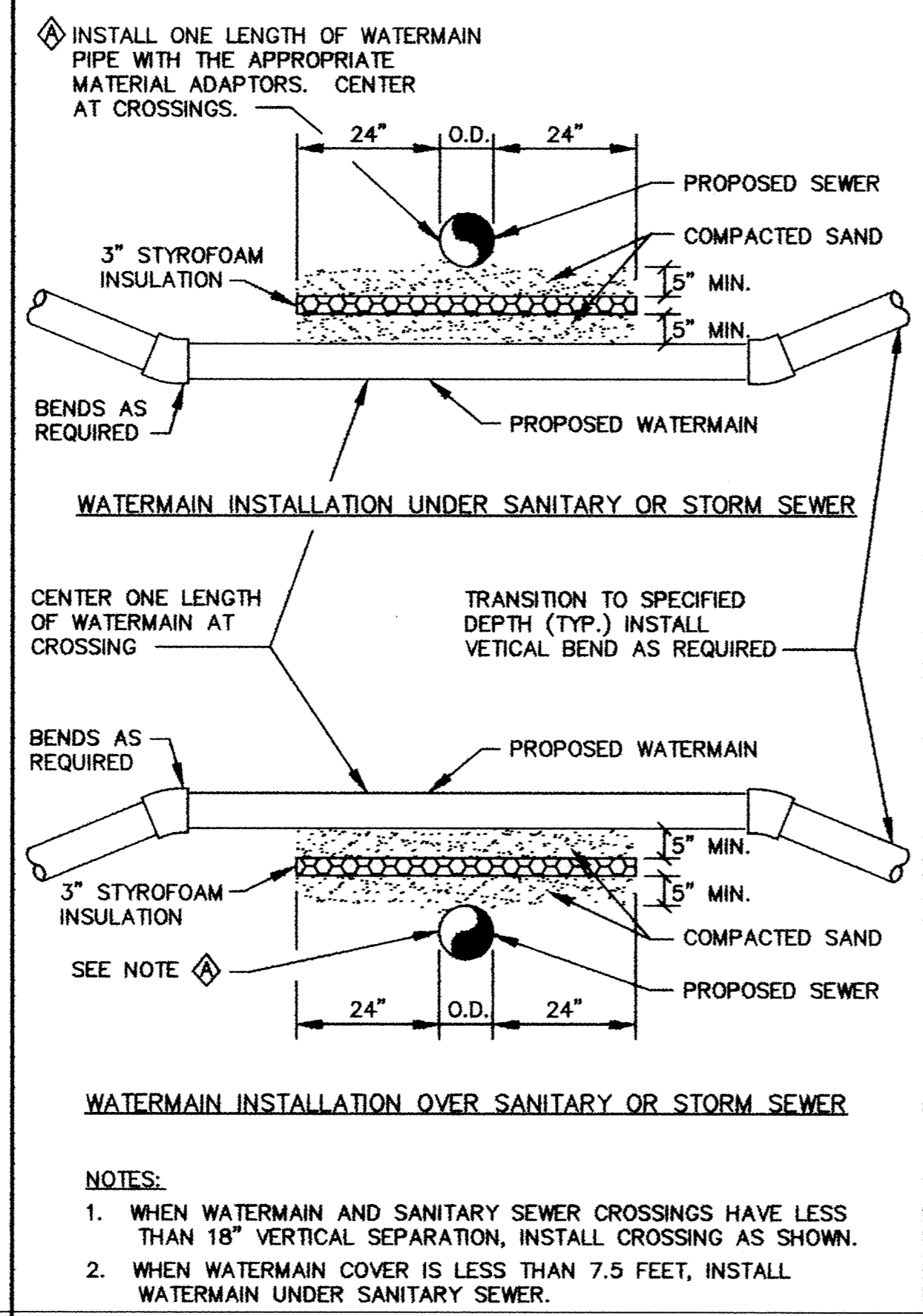
CLASS C PIPE BEDDING



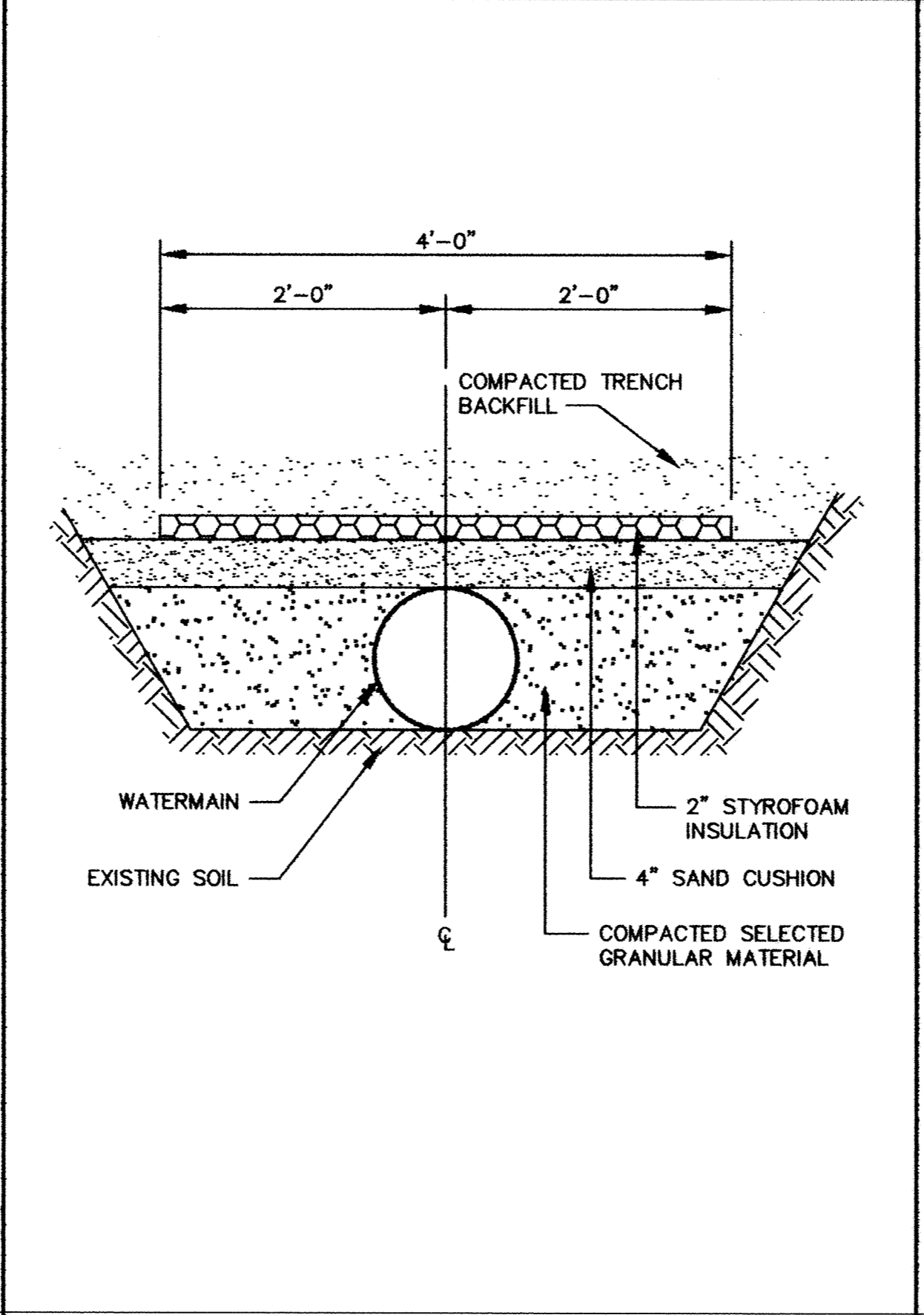
TYPICAL WATER LAYOUT



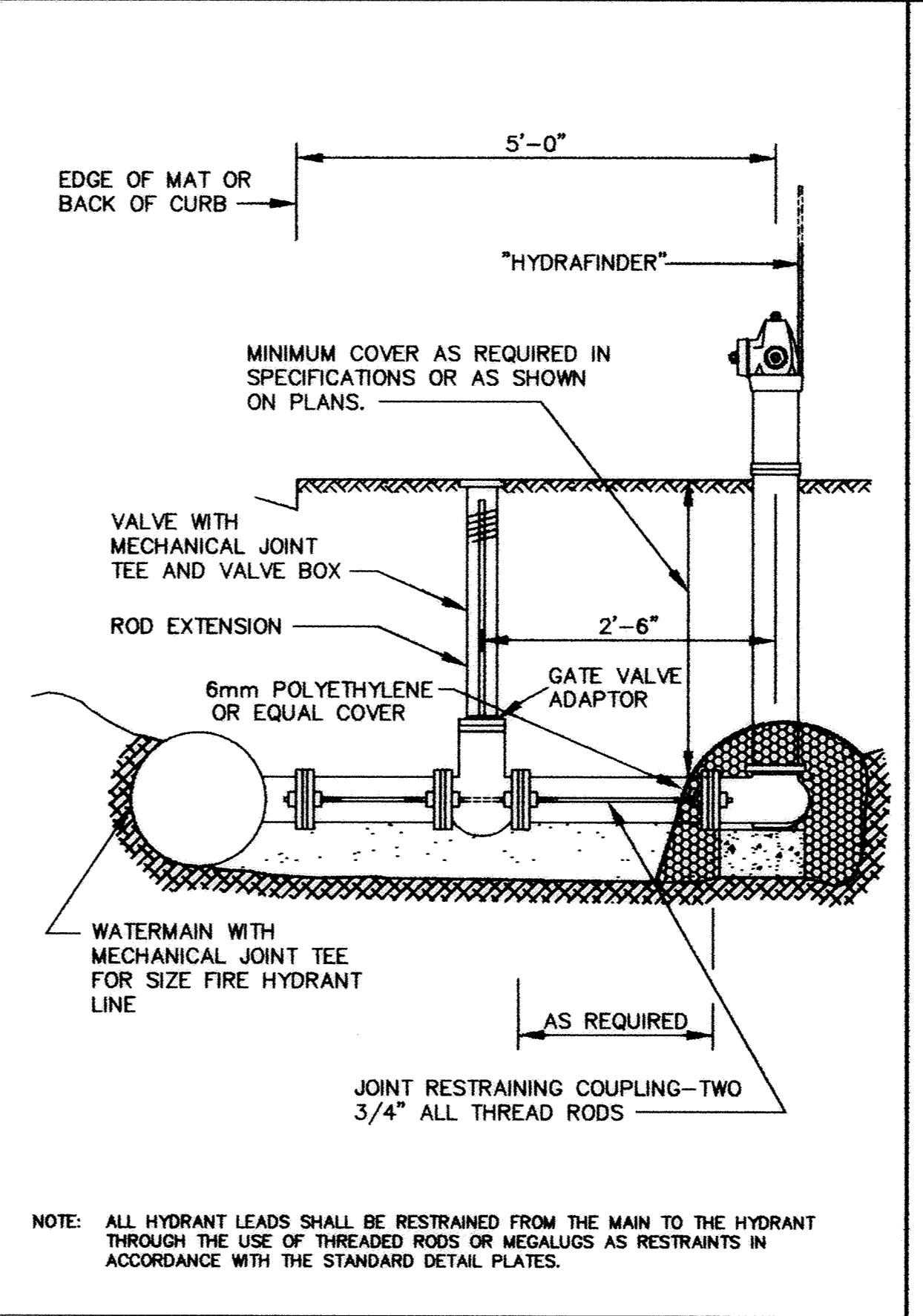
PACER HYDRANT DETAIL



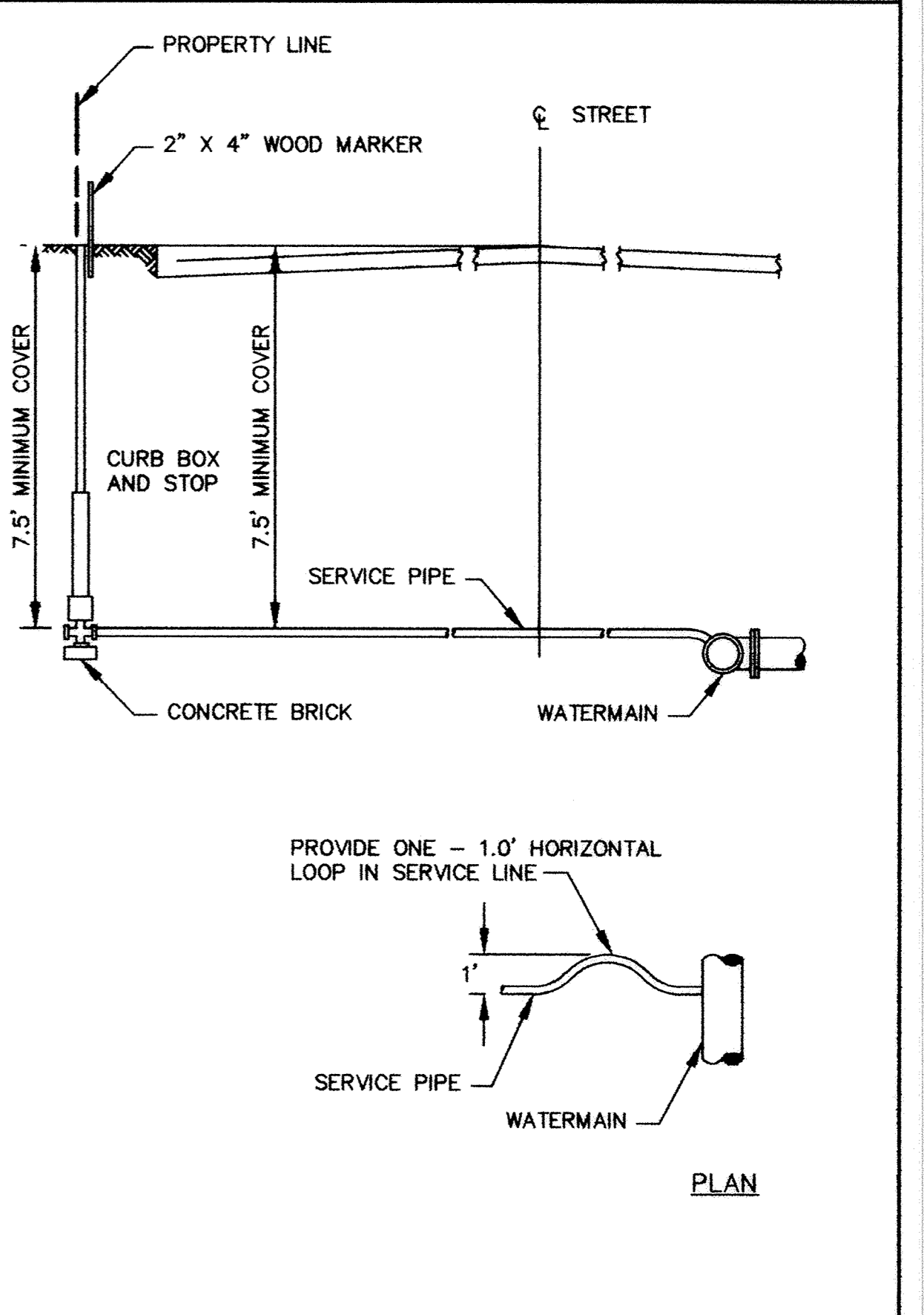
WATERMAIN CROSSING



PIPE INSULATION DETAIL



RODDING DETAIL



TYPICAL SERVICE DETAIL

DESIGNED BY: KJT DRAWN BY: EY
 APPROVED: TJM JOB NUMBER: 815640J
 CAD DATE: January 01, 2002 5:31:33 p.m.
 CAD FILE: 815640\MISC\815640-D3.DWG

I HEREBY CERTIFY THAT THIS PLAN, SPECIFICATION, OR REPORT WAS PREPARED BY ME OR UNDER MY DIRECT SUPERVISION AND THAT I AM A DULY LICENSED PROFESSIONAL ENGINEER UNDER THE LAWS OF THE STATE OF MINNESOTA.

SIGNATURE: _____ DATE: _____
 PRINTED NAME: TERRY J. MAURER LIC. NO. 15318

NO.	DATE	BY	REVISION DESCRIPTION

1326 ENERGY PARK DRIVE
 ST. PAUL, MINNESOTA 55108
 (651) 644-4389

Howard R. Green Company
 CONSULTING ENGINEERS

ZANE AVENUE IMPROVEMENTS
 CITY OF ELK RIVER
 ZANE AVENUE

WATERMAIN CONSTRUCTION DETAILS

SP. 7101-58

SHEET NO. **17**