

MINNESOTA DEPARTMENT OF TRANSPORTATION CITY OF ELK RIVER

SECTIONS 2, 3, 10 & 11 T33N R26W

CONSTRUCTION PLAN FOR GRADING, AGGREGATE BASE, BITUMINOUS,
SANITARY SEWER, WATERMAIN, STORM SEWER AND CONCRETE SIDEWALK

LOCATED ON ZANE AVENUE
FROM 171ST AVENUE TO 175TH AVENUE

THE 2000 EDITION OF THE MINNESOTA DEPARTMENT OF TRANSPORTATION
"STANDARD SPECIFICATIONS FOR CONSTRUCTION" SHALL GOVERN

GROSS LENGTH	805	FEET	0.152	MILES
BRIDGE LENGTH	0	FEET	0	MILES
EXCEPTION LENGTH	0	FEET	0	MILES
NET LENGTH	805	FEET	0.152	MILES

SCALES:	PLAN	PROFILE	CROSS SECTIONS
	0 20	0 VERT. 5	0 10 0 VERT. 5

PLAN SYMBOLS

SECTION LINE	---	TREES	
QUARTER LINE	----	BRUSH OR SHRUBS	
SIXTEENTH LINE	-----	HEDGE	
EXIST. RIGHT OF WAY	-.-.-.-	CONIFERS	
PERMANENT EASEMENTS	====	SWAMP	
GRADING LIMITS	-----	MAILBOX	
TEMPORARY EASEMENTS	-----	SIGN	
CENTER LINE	-----		
FENCE LINE	-x-x-		
RIVER OR CREEK			
LAKE OR POND			
CULVERT			
BRIDGE			
RETAINING WALL			

UTILITIES SYMBOLS

SANITARY SEWER		HYDRANT	
STORM SEWER		POWER OR TELEPHONE POLE	
WATERMAIN		LIGHT POLE	
GAS LINE		ANCHOR	
OVER HEAD UTILITIES		SOIL BORING	
ELECTRIC LINE		TELE BOX	
TELEPHONE LINE			
WETLAND			
MANHOLE			
CATCH BASIN			
VALVE			

PRESENT ADT (2001) 210 PROJ. ADT (2021) 275
 NO. OF TRAFFIC LANES 2
 SHOULDER WIDTH: 4 FT.
 PAVEMENT DESIGN: 10 TONS
 FUNCTIONAL CLASSIFICATION LOCAL
 SOIL FACTOR N/A PROJ. HCA DT (2021) 15
 OR
 R-VALUE 50 ESALS 90 000
 DESIGN SPEED 20 mph
 DESIGN SPEED NOT ACHIEVED AT:
 STA. N/A TO STA. N/A
 STOPPING SIGHT DISTANCE BASED ON:
 3.5' HEIGHT OF EYE
 0.5' HEIGHT OF OBJECT

INDEX OF SHEETS

- TITLE SHEET
- LOCATION PLAN/TYPICAL SECTION
- ESTIMATED QUANTITIES AND SCHEDULES
- 5A TYPICAL LEFT LANE CLOSURE
- 5B TYPICAL RIGHT LANE CLOSURE
- REMOVAL PLAN
- YALE STREET
- 8-9 ZANE AVENUE PLAN AND PROFILE
- 10-12 ZANE AVENUE CROSS SECTIONS
- SIGNING AND STRIPING
- TURF ESTABLISHMENT
- 15-18 DETAILS

THIS PLAN CONTAINS 19 SHEETS

NOTE:
 PURSUANT TO THE REQUIREMENTS OF M.S.216D.04, THE GOPHER STATE ONE-CALL NOTIFICATION CENTER WAS CONTACTED ON 12/13/01 AND THESE PLANS INCLUDE THE TYPE, SIZE AND GENERAL LOCATION OF THE UNDERGROUND FACILITIES AS REPORTED BY THE AFFECTED OPERATORS OF THOSE FACILITIES AS OF 2/18/02, THE DATE OF THE COMPLETION OF THIS FINAL DRAWING. THIS INFORMATION MAY NOT BE RELIED ON AS WARRANTING THE ACTUAL PRESENCE, CHARACTERISTICS, OR LOCATION OF THE UNDERGROUND FACILITIES AND DOES NOT RELIEVE ANY PERSON FROM COMPLYING WITH STATE NOTIFICATION AND LOCATION REQUIREMENTS PRIOR TO EXCAVATION.

I HEREBY CERTIFY THAT PLAN, SPECIFICATION, OR REPORT WAS PREPARED BY ME OR UNDER MY DIRECT SUPERVISION AND THAT I AM DULY LICENSED PROFESSIONAL ENGINEER UNDER THE LAWS OF THE STATE OF MINNESOTA.

SIGNATURE: _____ DATE _____
 PRINTED NAME: TERRY J. MAURER LIC. NO. 15316

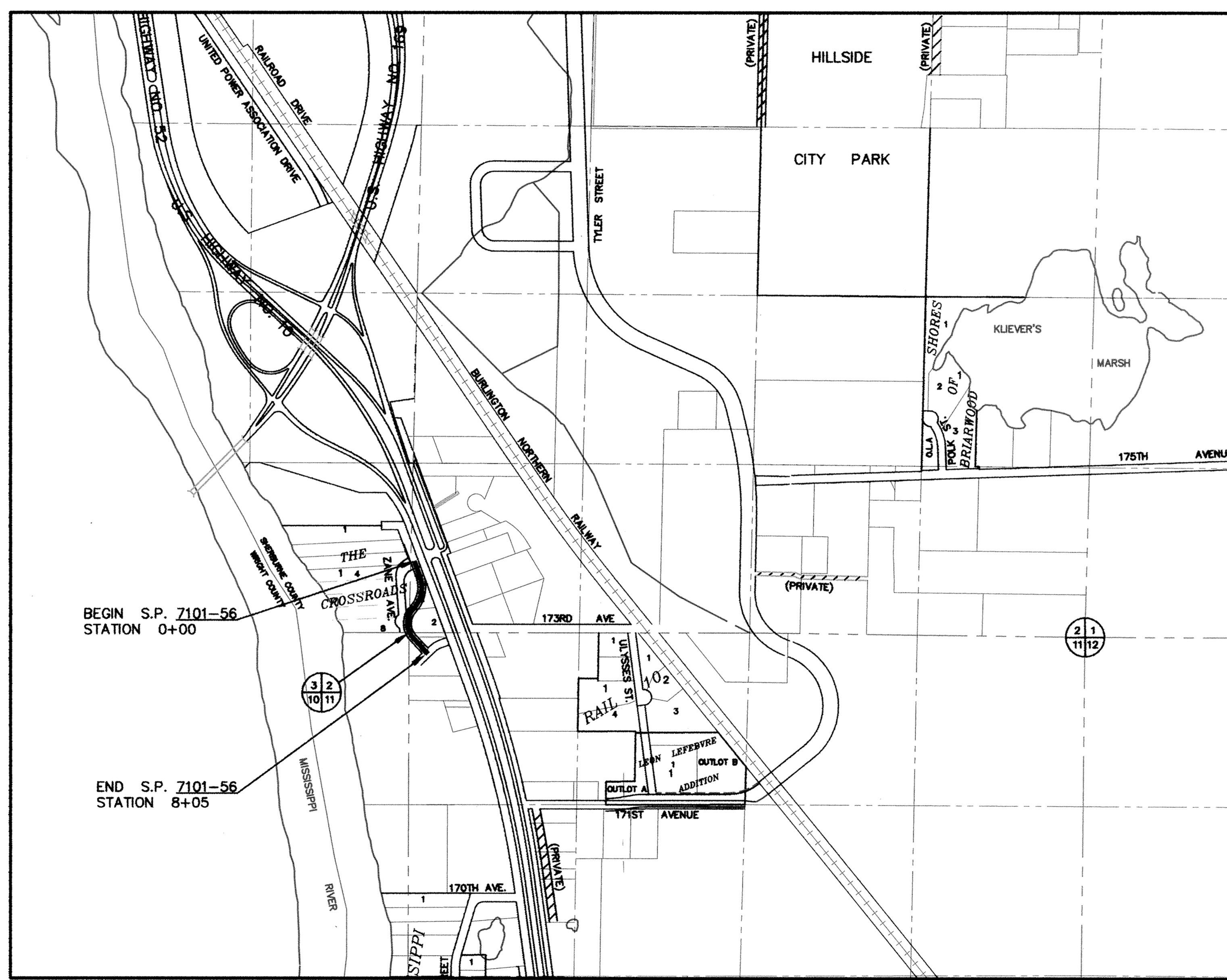
APPROVED _____ ELK RIVER, CITY ENGINEER DATE _____

RECOMMENDED FOR APPROVAL _____ 20 _____
 TRANSPORTATION DISTRICT ENGINEER

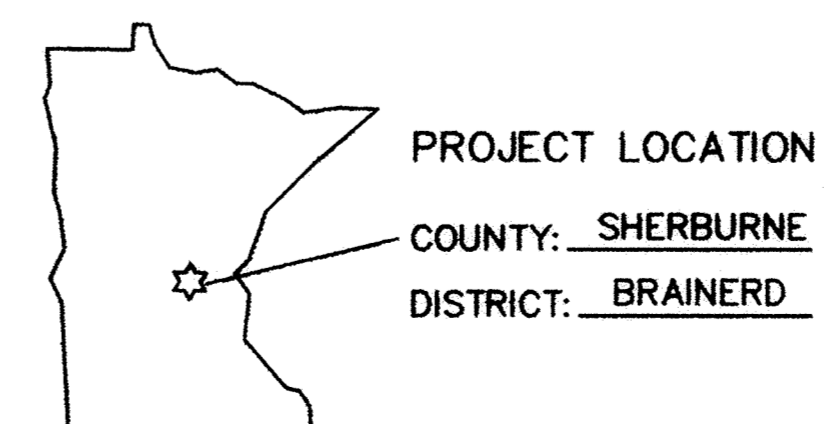
RECOMMENDED FOR APPROVAL _____ 20 _____
 STATE PRE-LETTING ENGINEER

OFFICE OF LAND MANAGEMENT APPROVAL _____ 20 _____
 DIRECTOR, LAND MANAGEMENT

APPROVED _____ 20 _____
 STATE DESIGN ENGINEER



1326 ENERGY PARK DRIVE
 ST. PAUL, MINNESOTA 55108
 (651) 644-4389
Howard R. Green Company
 CONSULTING ENGINEERS



S.P. 7101-56 (T.H. 10=3) SHEET 1 OF 19

**RECORD PLAN
 DECEMBER 2002**

DRAWING NUMBER
 1
 ZANE A 02
 DRAWING NUMBER
 1
 ZANE A 02
 DRAWING NUMBER
 1
 ZANE A 02
 DRAWING NUMBER
 1
 ZANE A 02