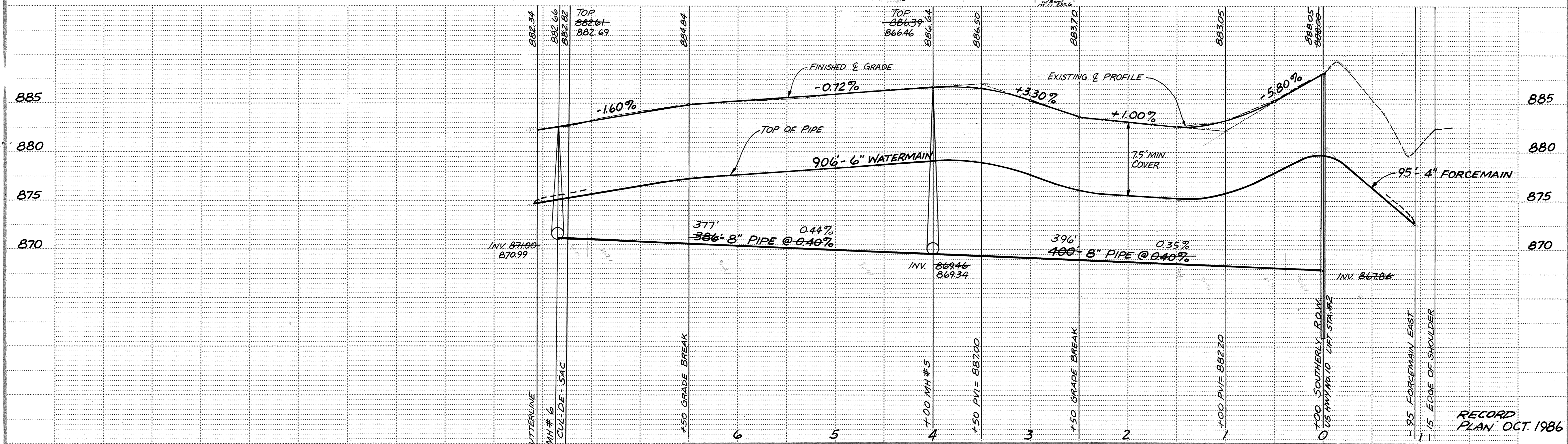
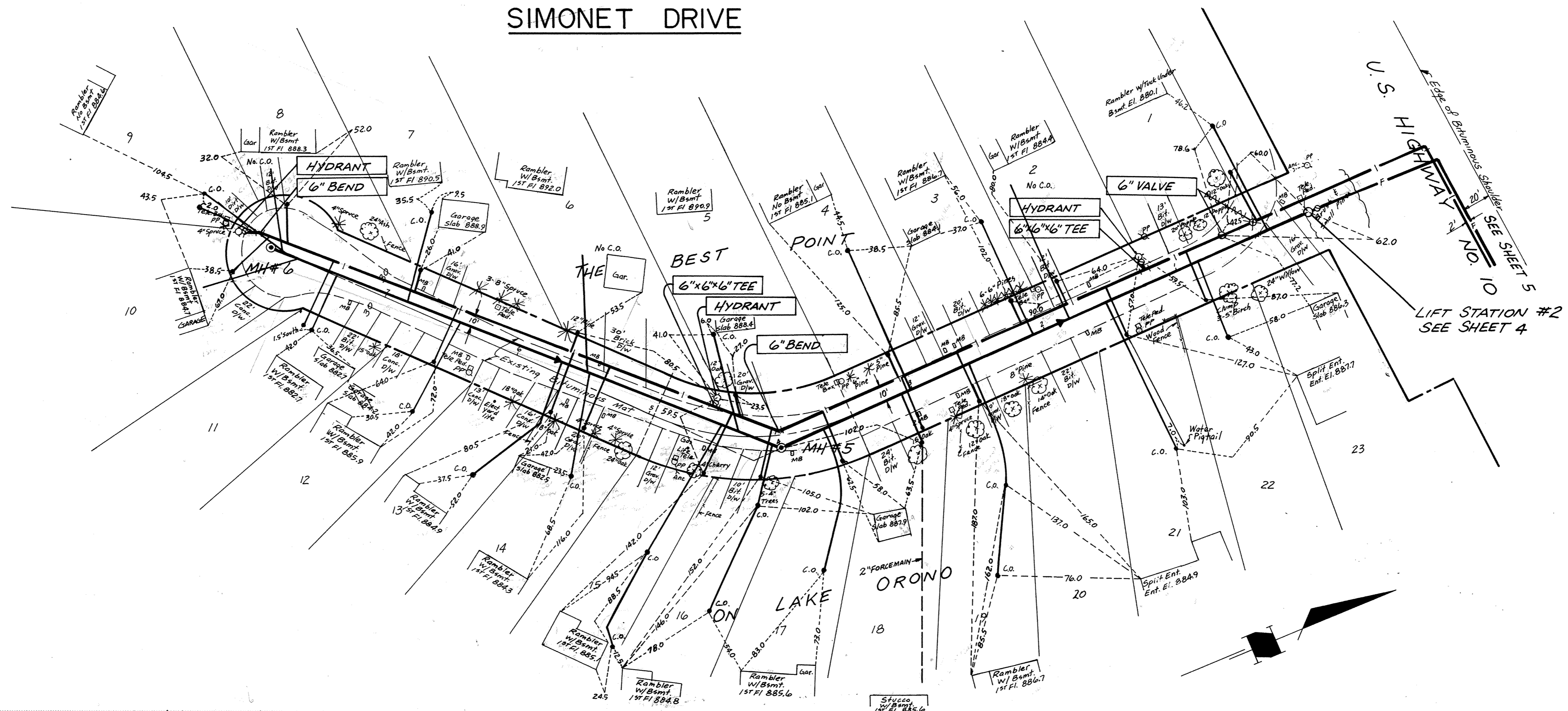



SIMONET DRIVE



RECORD PLAN OCT. 1986



Maier Stewart & Associates Inc.
CONSULTING ENGINEERS
480 CEDAR STREET (612) 227-9475 ST. PAUL, MINNESOTA 55101

DATE	DESCRIPTION

CITY OF ELK RIVER
SANITARY SEWER & WATERMAIN
SIMONET DRIVE

DESIGNED: _____
CHECKED: _____
DRAWN: **MRJ**
GRAPHIC SCALE:
0' HORIZ. 50'
0' VERT. 5'

DATE **JAN 1986** SHEET **6** OF **10** SHEETS PROJECT NO. **230-011**

DRAWING NUMBER XENIA 98 6

DRAWING NUMBER

DRAWING NUMBER

DRAWING NUMBER

DRAWING NUMBER