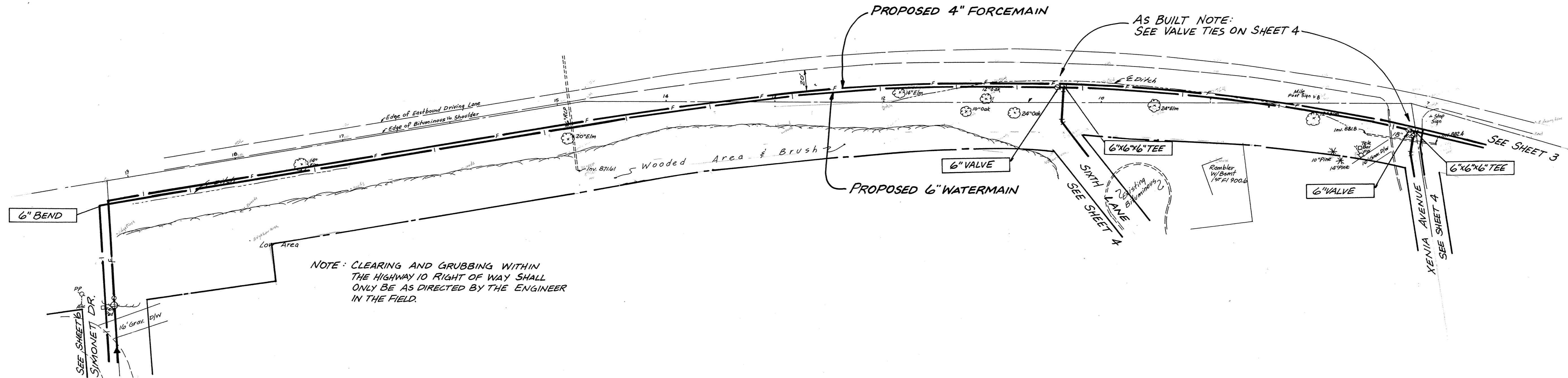
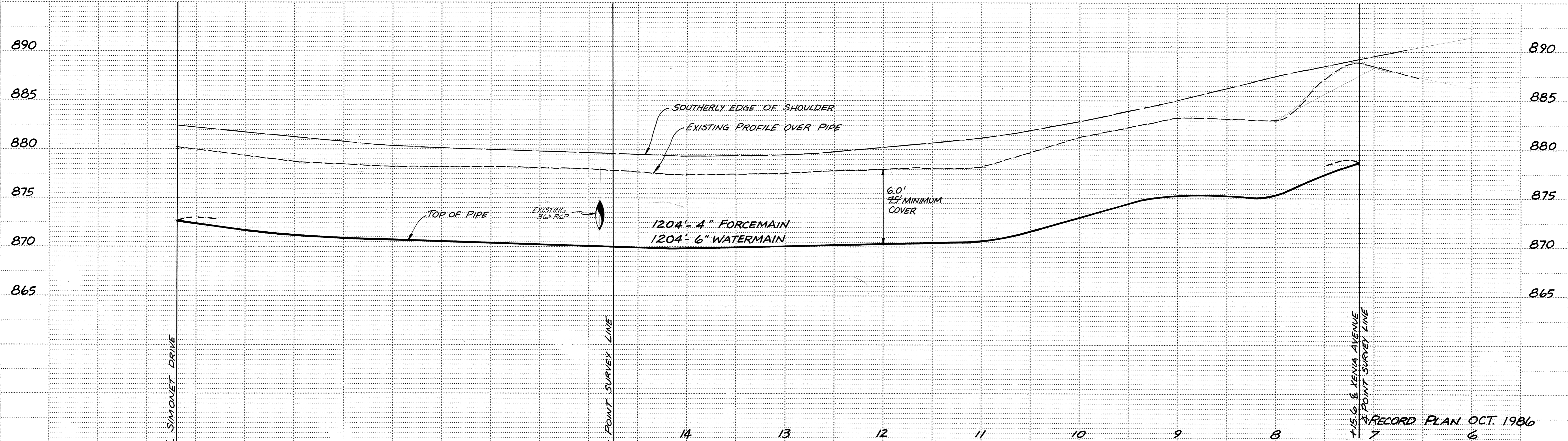


U.S. HIGHWAY NO. 10



NOTE: CLEARING AND GRUBBING WITHIN THE HIGHWAY 10 RIGHT OF WAY SHALL ONLY BE AS DIRECTED BY THE ENGINEER IN THE FIELD.



		CONSULTING ENGINEERS Maier Stewart & Associates Inc.		480 CEDAR STREET (612)227-9475 ST. PAUL, MINNESOTA 55101	
REVISIONS	DATE	DESCRIPTION	DESIGNED CHECKED DRAWN	CITY OF ELK RIVER FORCEMAIN & WATERMAIN U.S. HIGHWAY NO. 10	
			GRAPHIC SCALE 0 HORIZ. 50 0 VERT. 5	RECORD PLAN OCT. 1986	
			DATE <u>JAN. 1986</u>	SHEET <u>5</u> OF <u>10</u> SHEETS	PROJECT NO. <u>230-011</u>

DRAWING NUMBER

DRAWING NUMBER

DRAWING NUMBER

DRAWING NUMBER

SUNCO PRODUCTS • NEW AUSTIN, MINNESOTA PROJECT NO. 230-011 SHEET 5 OF 10