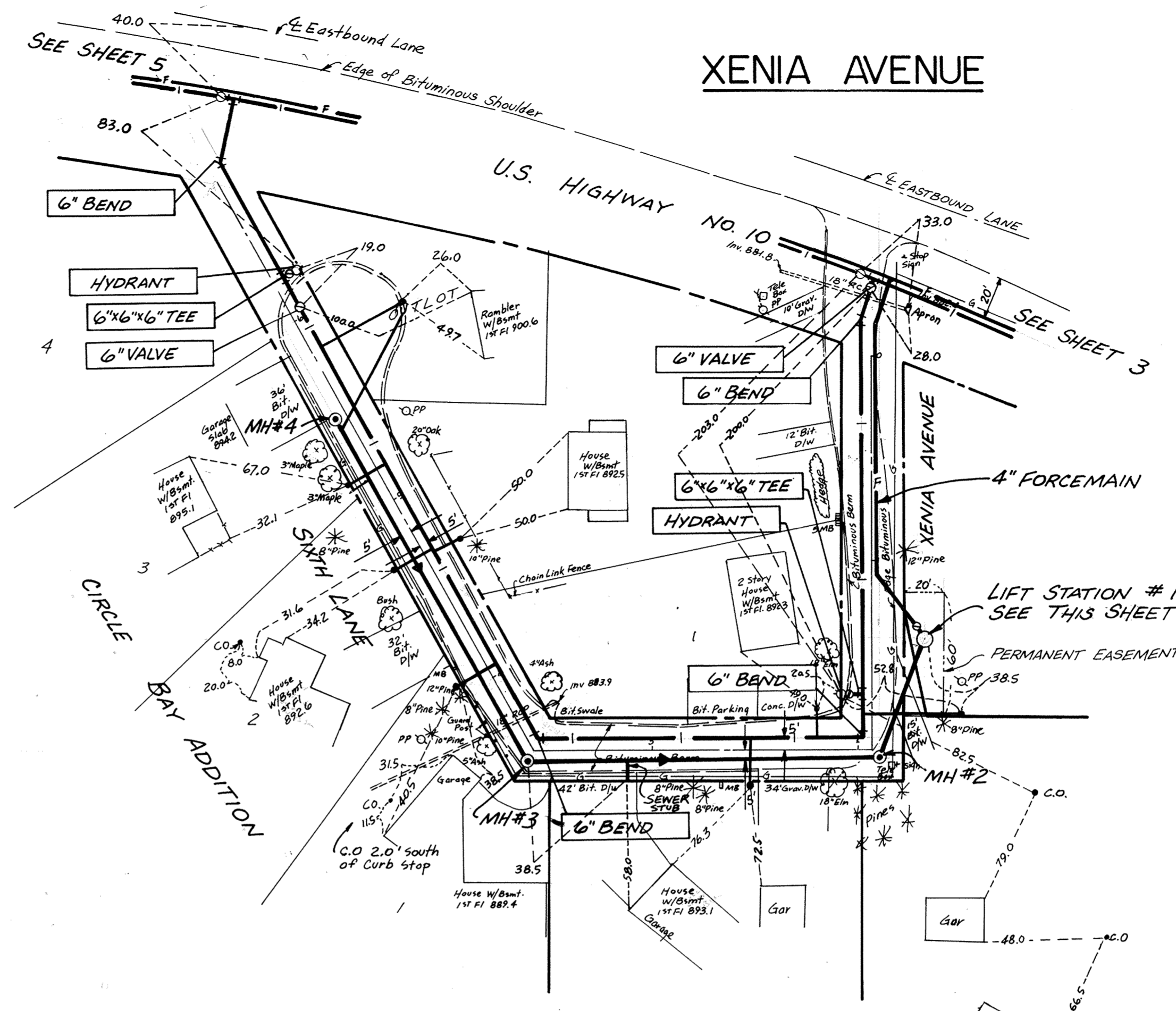
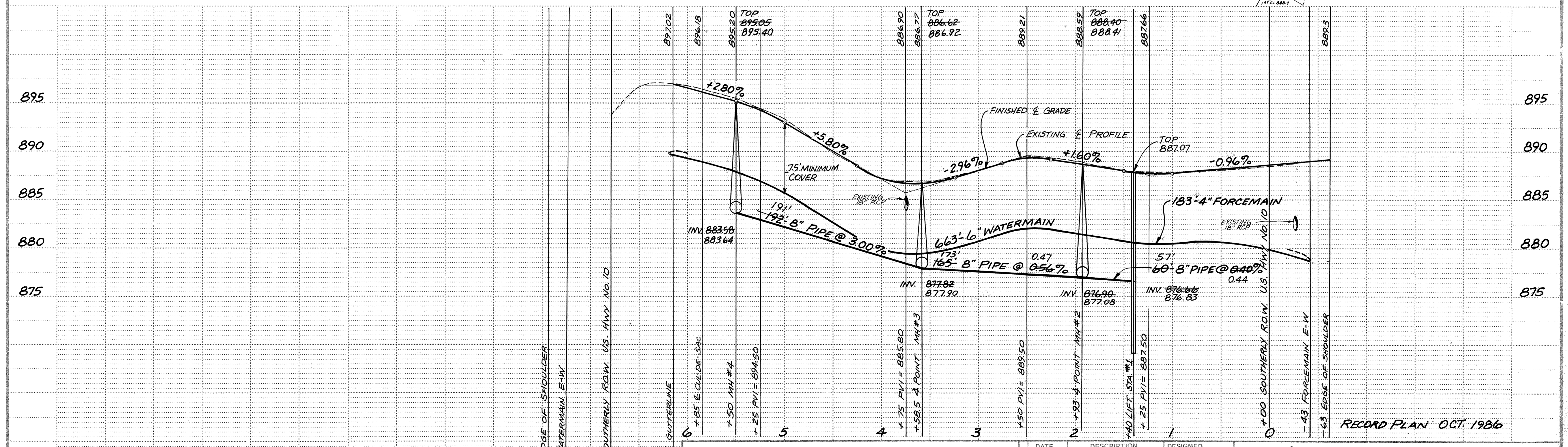


	INLET INV.	A	B	C	D	E	F	BASE INV.	TOP ELEV.
LIFT STATION #1	876.83 876.80	0.6'	0.75'	0.75'	1.65'	0.75'	4.5'	872.44 872.70	887.07
LIFT STATION #2	867.86	0.5'	0.5'	0.75'	3.5'	0.75'	6.0'	861.86	882.05

LIFT STATION DETAILS



AS BUILT NOTE:
ALL TIES TO CURB STOPS UNLESS OTHERWISE NOTED. SEWER & WATER SERVICES LAID IN SAME TRENCH.



RECORD PLAN OCT. 1986

MS&A CONSULTING ENGINEERS
Maier Stewart & Associates Inc.
480 CEDAR STREET (612) 227-9475 ST. PAUL, MINNESOTA 55101

DATE	DESCRIPTION

CITY OF ELK RIVER
SANITARY SEWER & WATERMAIN
SIXTH LANE - XENIA AVENUE

DESIGNED: _____
CHECKED: _____
DRAWN: **ARJ**

GRAPHIC SCALE
0 HORIZ. 30'
0 VERT. 5'

DATE JAN 1986 SHEET 4 OF 10 SHEETS PROJECT NO. 230-011