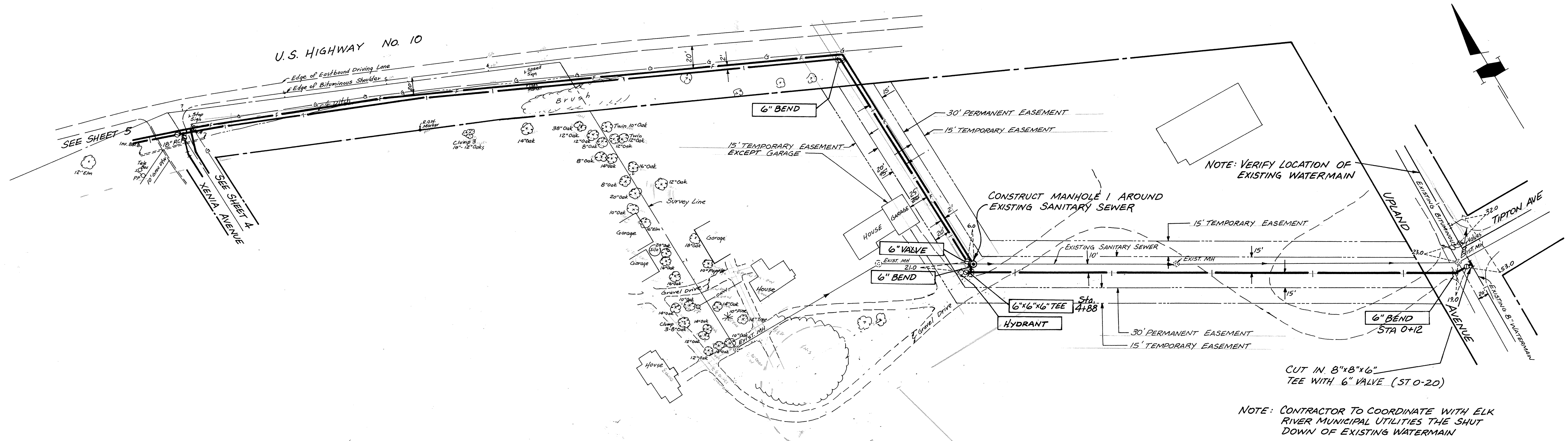
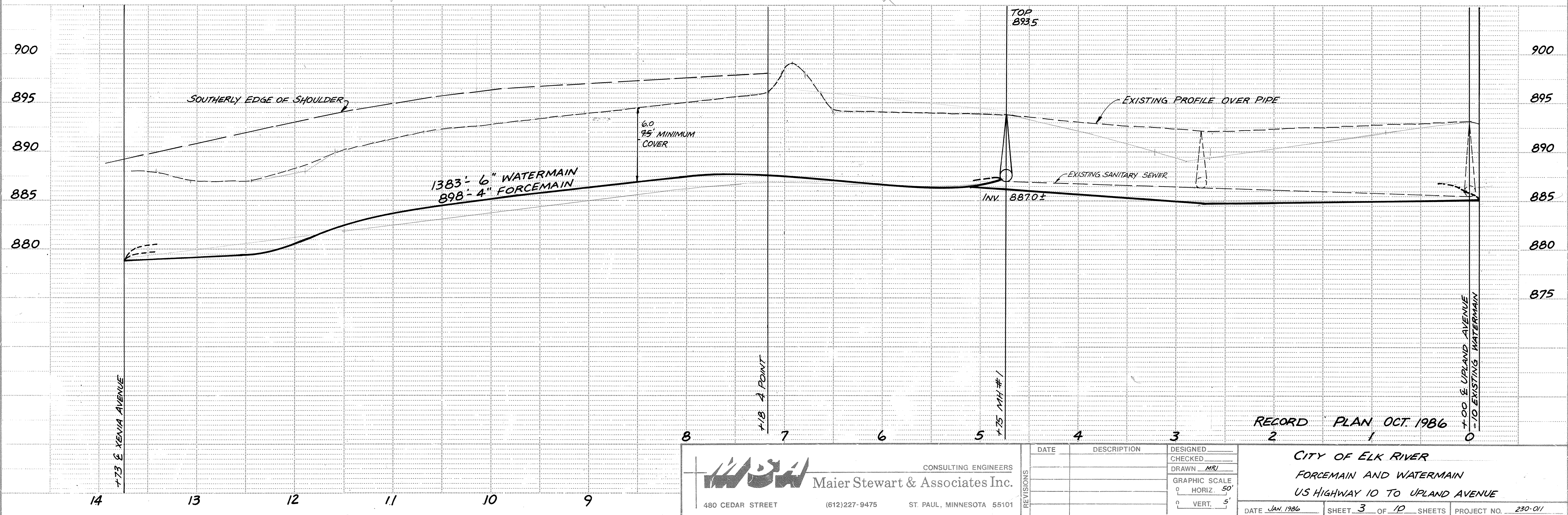


U.S. HIGHWAY NO. 10



NOTE: CONTRACTOR TO COORDINATE WITH ELK RIVER MUNICIPAL UTILITIES THE SHUT DOWN OF EXISTING WATERMAIN



		DESIGNED _____	CITY OF ELK RIVER FORCEMAIN AND WATERMAIN US HIGHWAY 10 TO UPLAND AVENUE
		CHECKED _____	
CONSULTING ENGINEERS Maier Stewart & Associates Inc. 480 CEDAR STREET (612)227-9475 ST. PAUL, MINNESOTA 55101		DRAWN <u>MRI</u> GRAPHIC SCALE 0 HORIZ. 50' 0 VERT. 5'	DATE <u>JAN 1986</u> SHEET <u>3</u> OF <u>10</u> SHEETS PROJECT NO. <u>230-01</u>

DRAWING NUMBER XENIA 86
 3
 SAUCO PRODUCTS • AUSTIN, TEXAS
 PREPARED BY PART NUMBER 6533