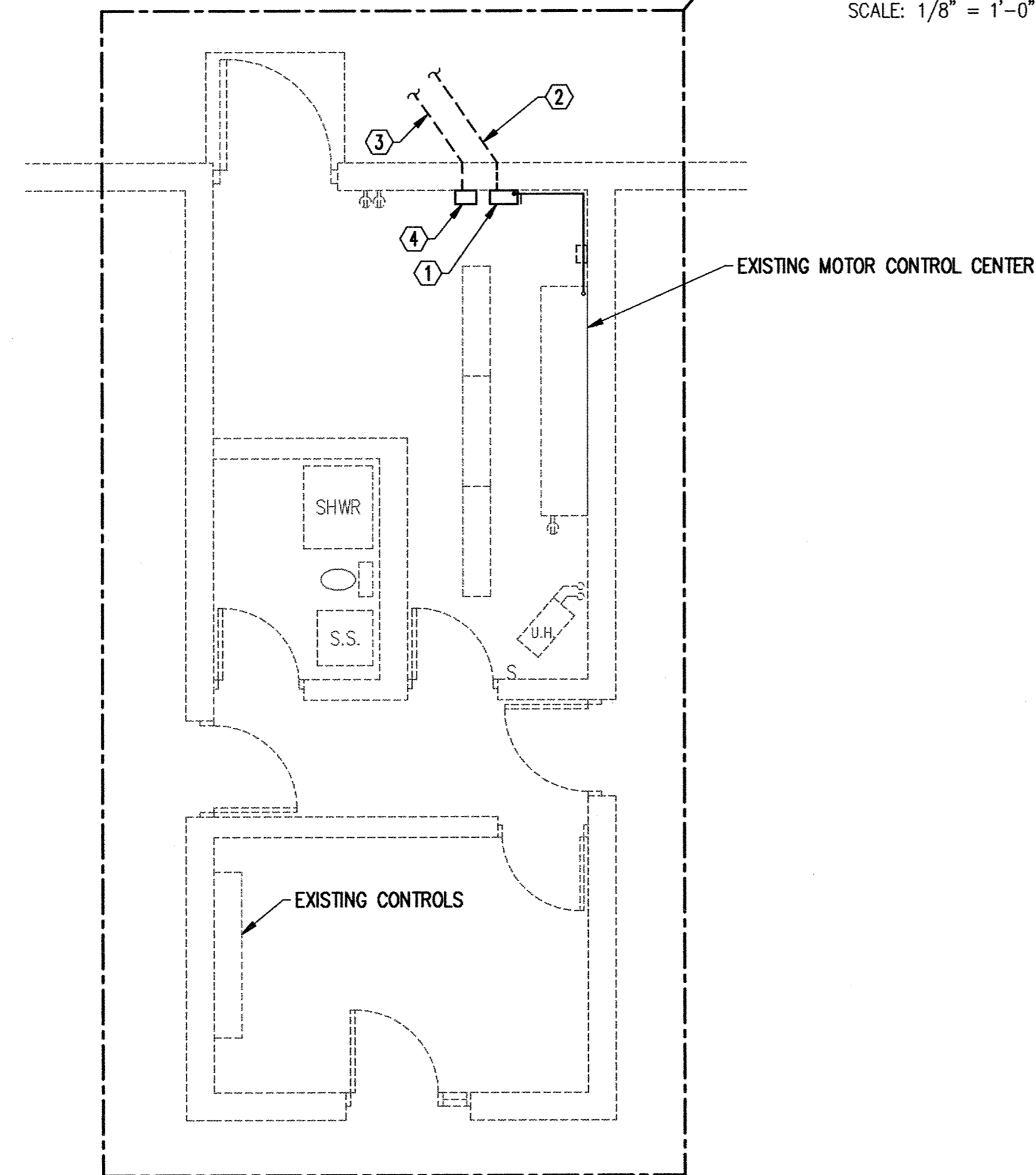
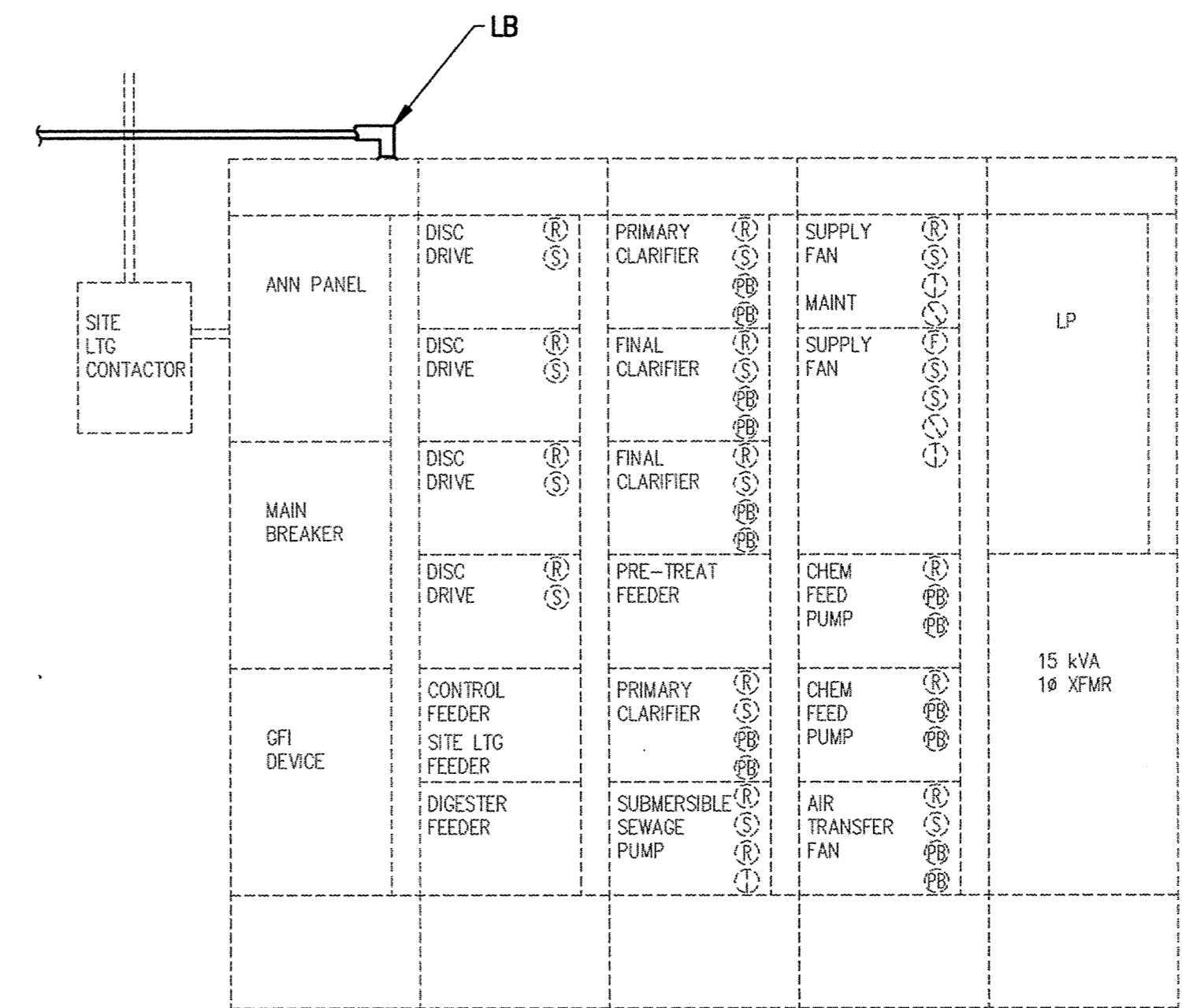


ELECTRICAL MODIFICATION PLAN TO EXISTING RBC BUILDING
SCALE: 1/8" = 1'-0"



NUMBERED NOTES

- ① 480VOLT, 3P, 200AMP, NEMA 1 CIRCUIT BREAKER. CONNECT TO LOAD SIDE OF GROUND MONITORING EQUIPMENT IN MCC W/ 3-1/C-#3/0-2"
- ② 4-1/C-#3/0, 1-1/C-#2 BARE COPPER GROUND, 2" SCHEDULE 80 PVC TO DISINFECTION BUILDING
- ③ 2" GALVANIZED RIGID STEEL CONDUIT W/ PULL-WIRE FOR FUTURE USE
- ④ 8"x8"x8" NEMA 1 GALVANIZED JUNCTION BOX AT 18" A.F.F. TERMINATE SIGNAL CONDUIT IN JUNCTION BOX



EXISTING MOTOR CONTROL CENTER ELEVATION
SCALE: 3/4" = 1'-0"

NOTE: THE ELECTRICAL SYSTEM IS PRESENTLY CONNECTED 480 VOLTS, DELTA. THE CONTRACTOR SHALL INSTALL THE NEUTRAL CONDUCTOR PER THE CONTRACT DOCUMENTS BUT SHALL TAPE THE CONDUCTOR OFF FOR FUTURE CONNECTION

This drawing was prepared by:
Kaeding & Associates, Inc.
7300 France Avenue South
Suite 330
Minneapolis, MN 55435
Telephone: (612) 831-0317
Fax: (612) 831-2179

I hereby certify that this report, plan, or specification was prepared by me or under my direct supervision and I am a duly registered Professional Engineer under the laws of the State of Minnesota.
[Signature]
Date: 16 AUG 93 Registration No.: 9955

Maier Stewart & Associates Inc. CONSULTING ENGINEERS
1959 SLOAN PLACE (612) 774-6021 ST. PAUL, MINNESOTA 55117
9800 SHELARD PARKWAY (612) 546-0432 MINNEAPOLIS, MINNESOTA 55441

REVISIONS	DATE	DESCRIPTION	DESIGNED PFK	CHECKED PFK	DRAWN DTB

GRAPHIC SCALE
0 HORIZ.]
0 VERT.]

CITY OF ELK RIVER
WASTEWATER TREATMENT PLANT U.V. DISINFECTION
ELECTRICAL MODIFICATION PLAN