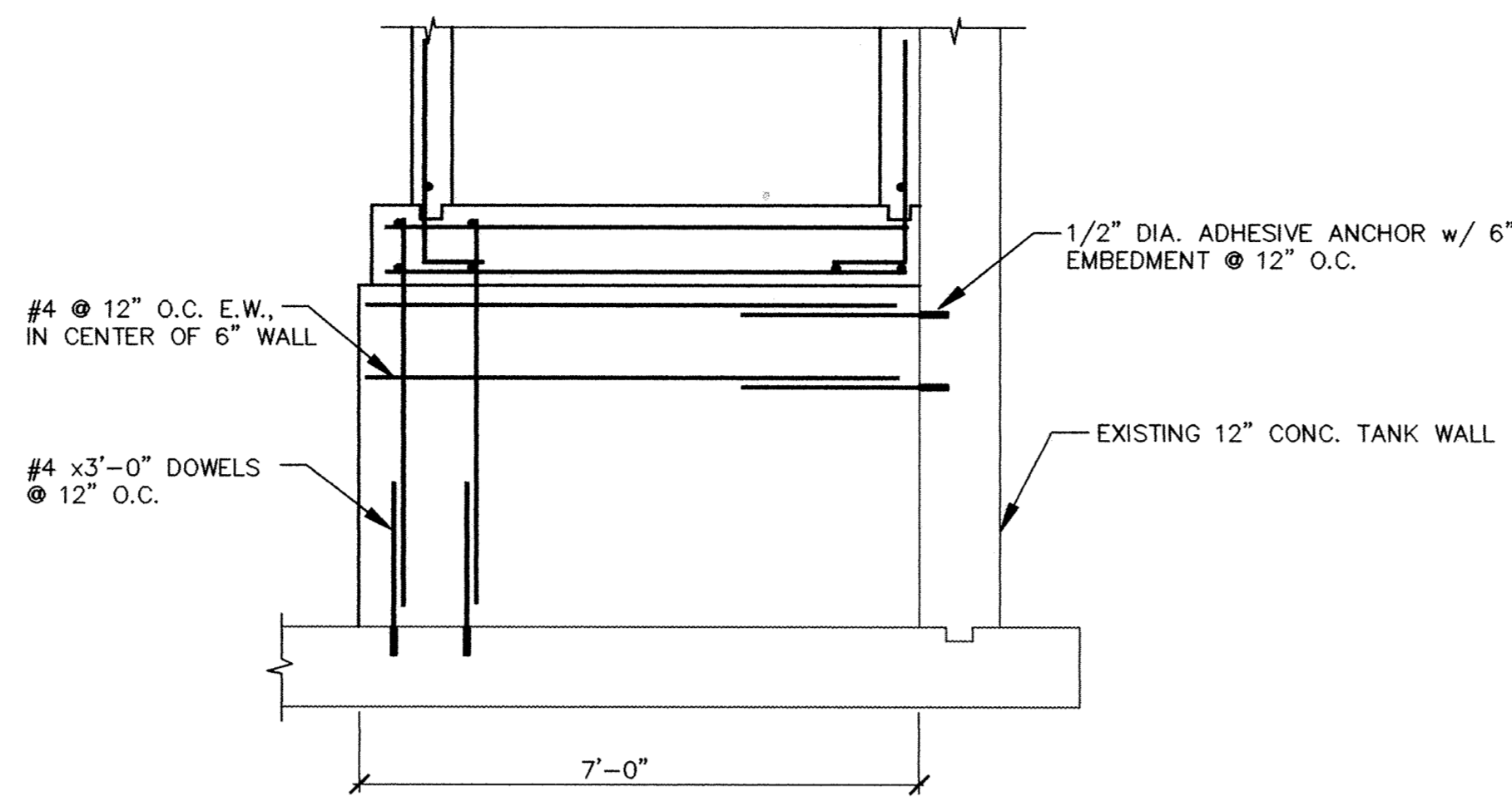
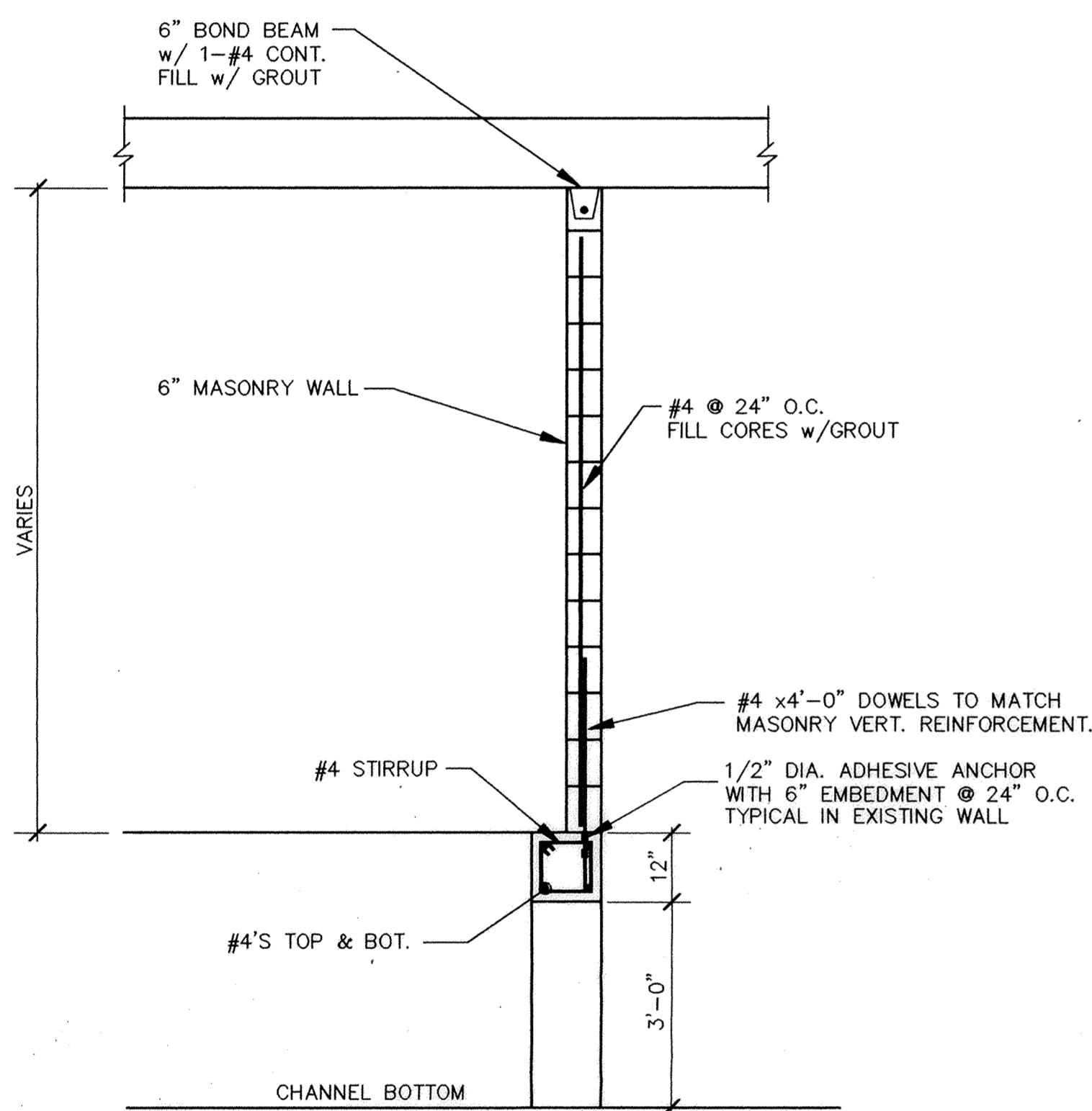


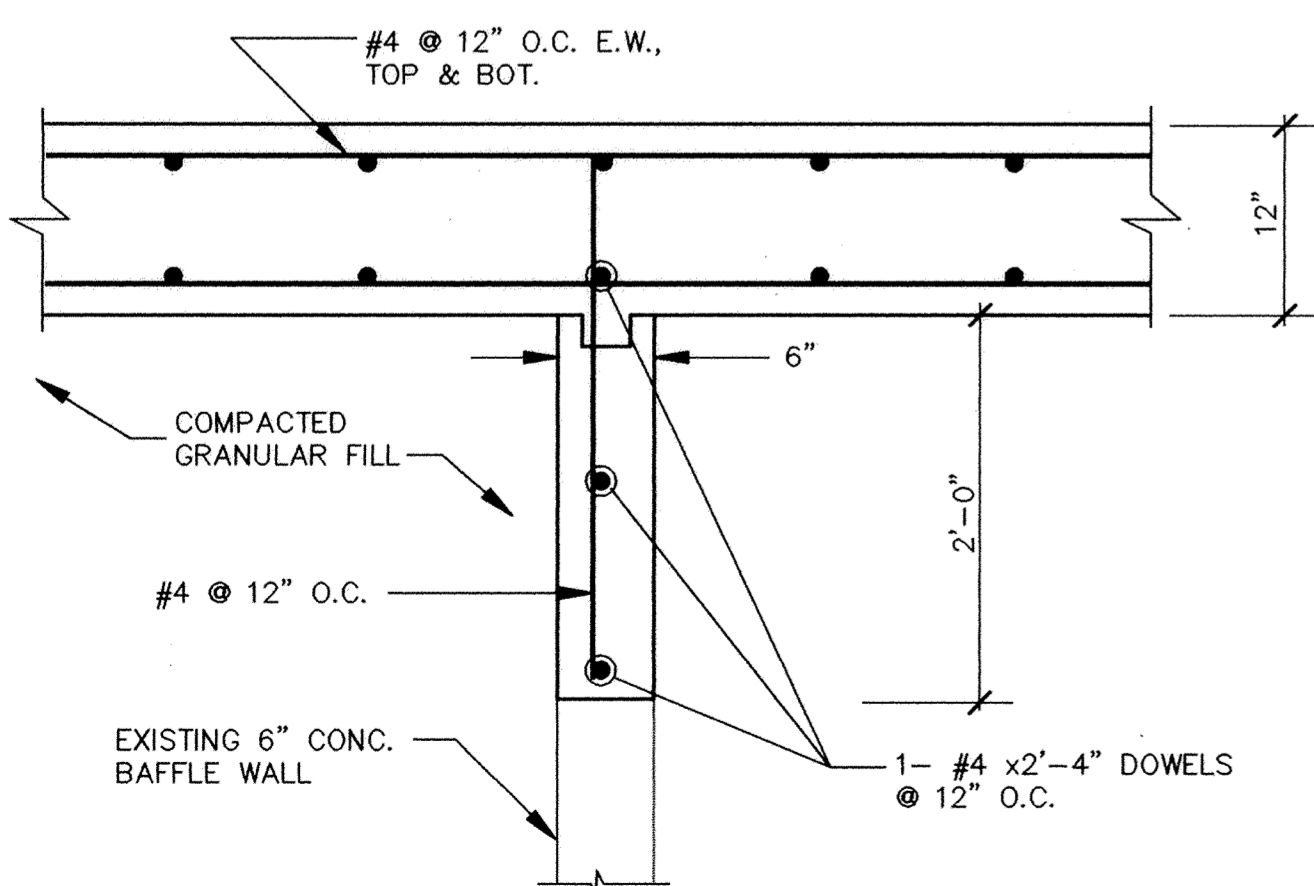
FLUME OPENING - DETAIL 1
Scale: 1/2" = 1'-0"



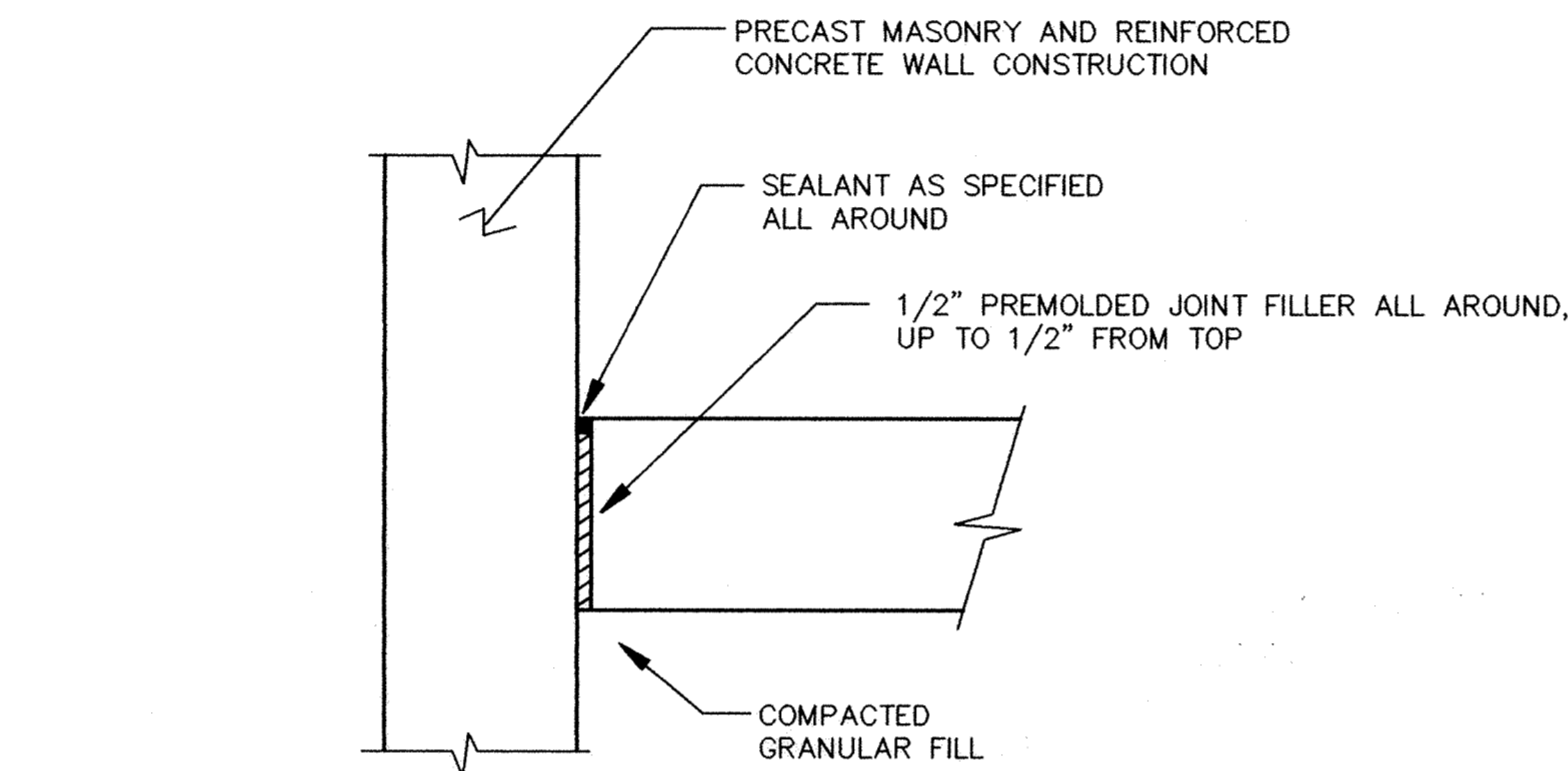
NEW 6' CONCRETE SUPPORT WALL - DETAIL 4
Scale: 1/2" = 1'-0"



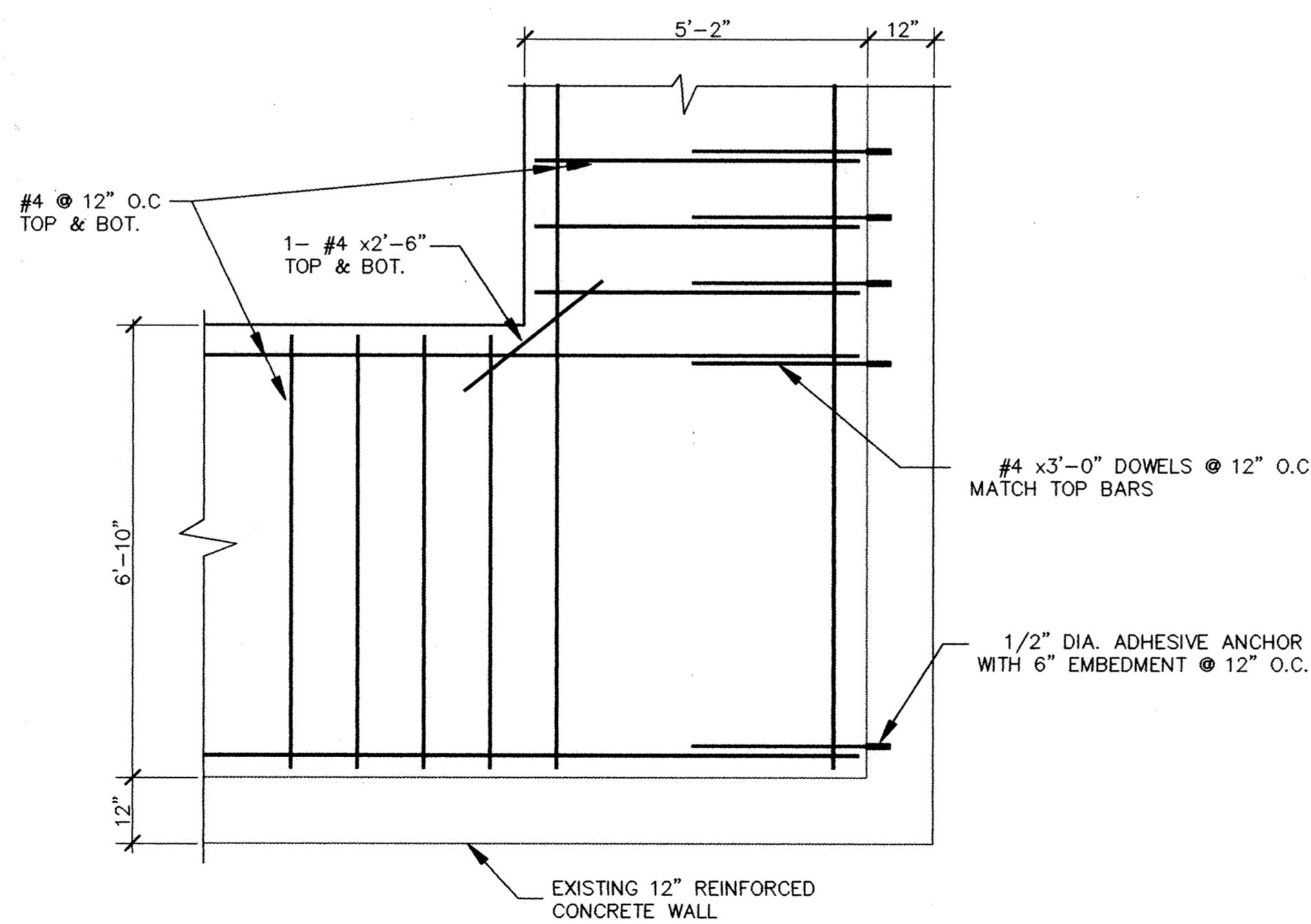
DETAIL 2
Scale: 1/2" = 1'-0"



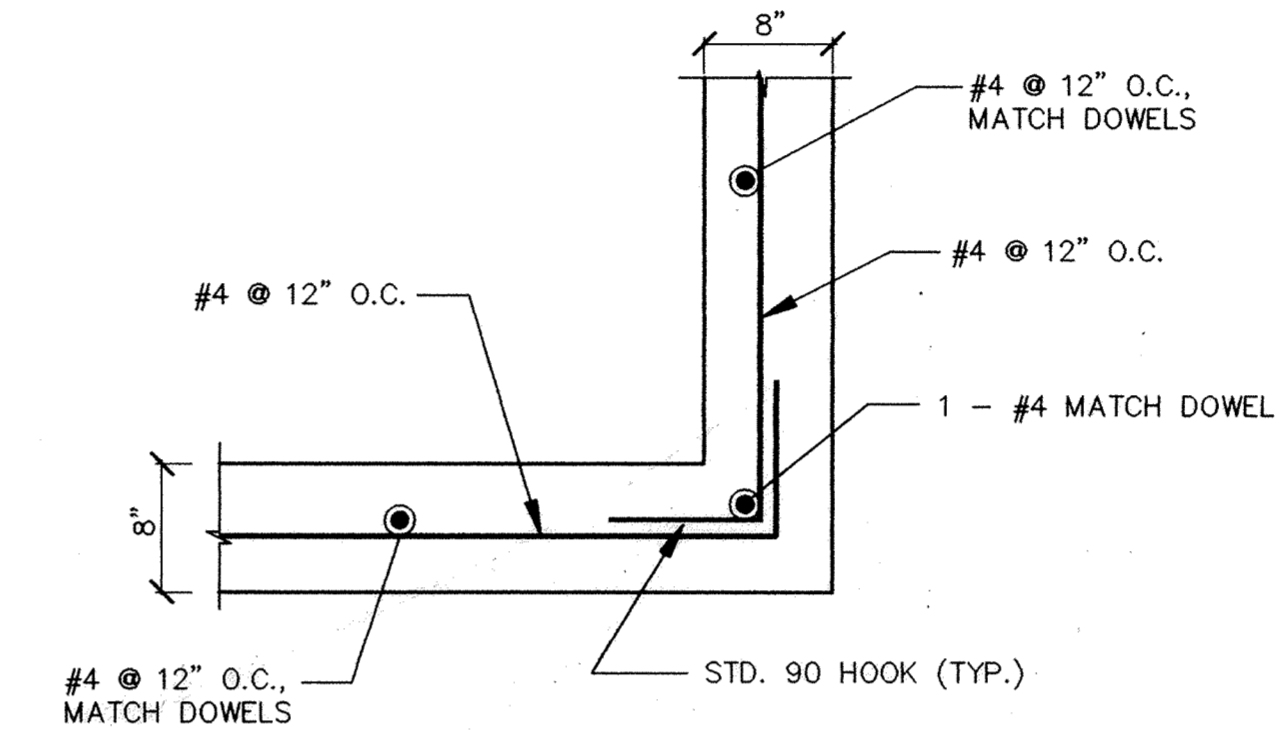
DETAIL 3
Scale: 1" = 1'-0"



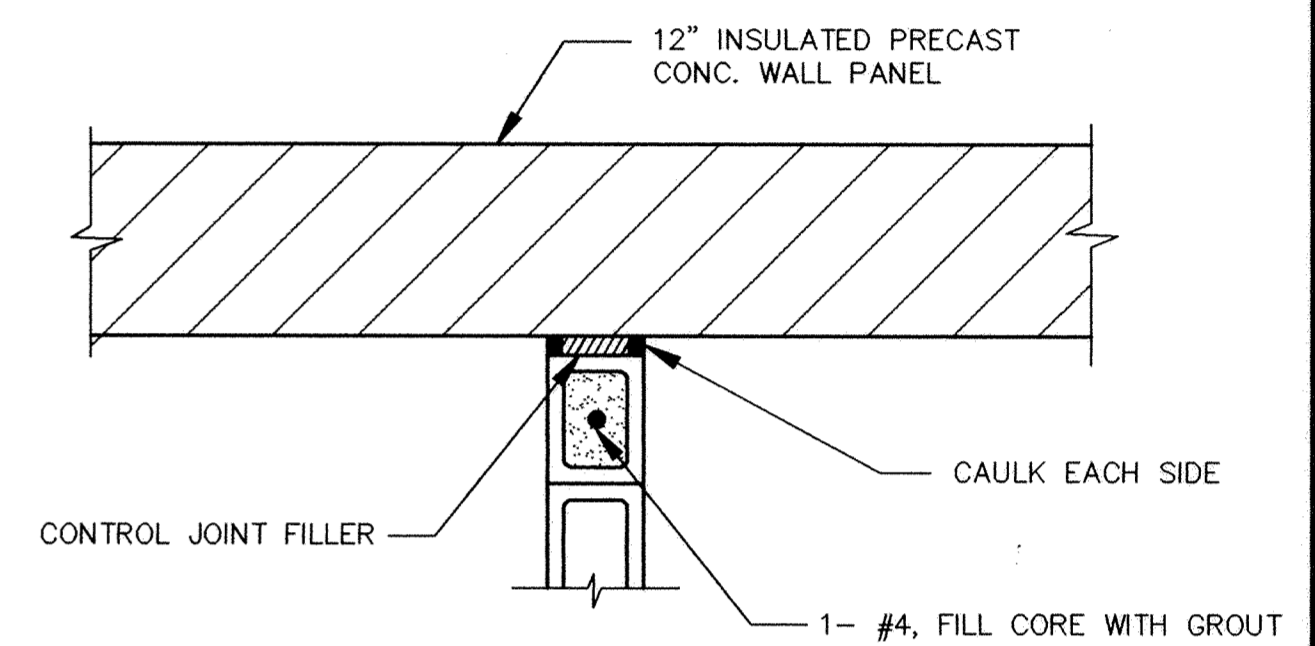
GRADE SLAB ISOLATION JOINT (TYP.) - DETAIL 5
Scale: 1" = 1'-0"



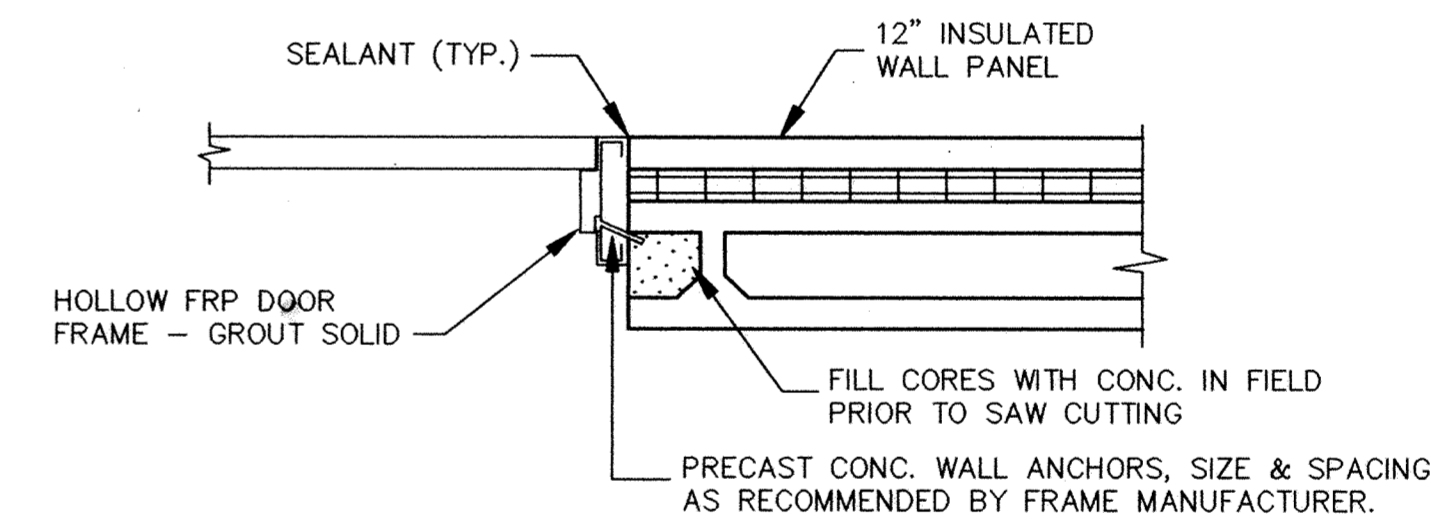
CHANNEL BASE SLAB CORNER REINFORCEMENT (TYP.) - DETAIL 6
Scale: 1/2" = 1'-0"



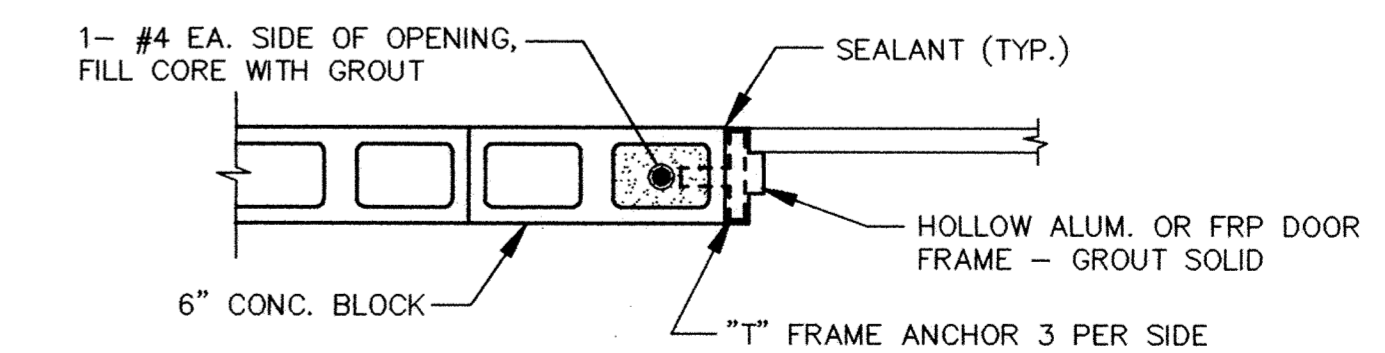
CHANNEL WALL CORNER REINFORCEMENT (TYP.) - DETAIL 7
Scale: 1" = 1'-0"



WALL INTERSECTION CONTROL JOINT (TYP.) - DETAIL 8
Scale: 1" = 1'-0"



DOOR JAMB PRECAST WALL (TYP.) - DETAIL 9
Scale: 1" = 1'-0"



DOOR JAMB MASONRY WALL (TYP.) - DETAIL 10
Scale: 1" = 1'-0"

- STRUCTURAL NOTES:**
1. REINFORCEMENT DETAILS SHALL CONFORM TO THE REQUIREMENTS OF "THE ACI MANUAL OF STANDARD PRACTICE (ACI 315)". SPLICES AND EMBEDMENT LENGTHS NOT GIVEN ON THE CONTRACT DRAWINGS SHALL BE PRESUMED TO BE IN TENSION AND SHALL CONFORM TO THOSE REQUIREMENTS. UNLESS OTHERWISE SHOWN, SPLICES SHALL BE CLASS "C" TENSION LAP SPLICES AS DEFINED IN ACI 318.
 2. MINIMUM CLEAR CONCRETE COVER FOR REINFORCING BARS, UNLESS SHOWN OTHERWISE SHALL BE 3" WHEN CAST AGAINST EARTH AND 2" WHEN NOT CAST AGAINST EARTH.
 3. SPACING OF REINFORCING BARS SHOWN ON THE DRAWINGS SHALL BE A MAXIMUM.
 4. EXPOSED CONCRETE EDGES SHALL BE CHAMFERED 3/4" BY 3/4" UNLESS NOTED OTHERWISE.
 5. CONSTRUCTION JOINTS AND REINFORCING STEEL BAR SPLICES SHALL BE WHERE SHOWN ON DRAWINGS. OPTIONAL CONSTRUCTION JOINTS MAY BE PROPOSED BY THE CONTRACTOR SUBJECT TO REVIEW BY STRUCTURAL ENGINEER.
 6. THOROUGHLY CLEAN AS SPECIFIED EXPOSED EXISTING CONCRETE SURFACES TO RECEIVE CONCRETE.
 7. DAMAGE TO WALLS TO REMAIN OR ADJACENT TO WALLS TO BE REMOVED, SHALL BE REPAIRED BY THE CONTRACTOR AT NO ADDITIONAL COST TO THE PROJECT.
 8. REINFORCING BARS SHALL CONFORM TO THE REQUIREMENTS ASTM A615, GRADE 60. ALL REINFORCEMENT SHALL BE EPOXY COATED, UNLESS OTHERWISE SPECIFIED.

I HEREBY CERTIFY THAT THIS PLAN, SPECIFICATION, OR REPORT WAS PREPARED BY ME OR UNDER MY DIRECT SUPERVISION AND THAT I AM A DULY REGISTERED PROFESSIONAL ENGINEER UNDER THE LAWS OF THE STATE OF MINNESOTA.
Charles J. Smith
DATE 8/16/93 REG. NO. 14596

MSA CONSULTING ENGINEERS
Maier Stewart & Associates Inc.
1959 SLOAN PLACE (612) 774-6021 ST. PAUL, MINNESOTA 55117
9800 SHELARD PARKWAY (612) 546-0432 MINNEAPOLIS, MINNESOTA 55441

REVISIONS	DATE	DESCRIPTION	DESIGNED - DLC	CHECKED - DLC/GG	DRAWN - TB

CITY OF ELK RIVER
WASTEWATER TREATMENT PLANT U.V. DISINFECTION
STRUCTURAL DETAILS

DATE AUG., 1993 SHEET 5 OF 14 SHEETS PROJECT NO. 230-151