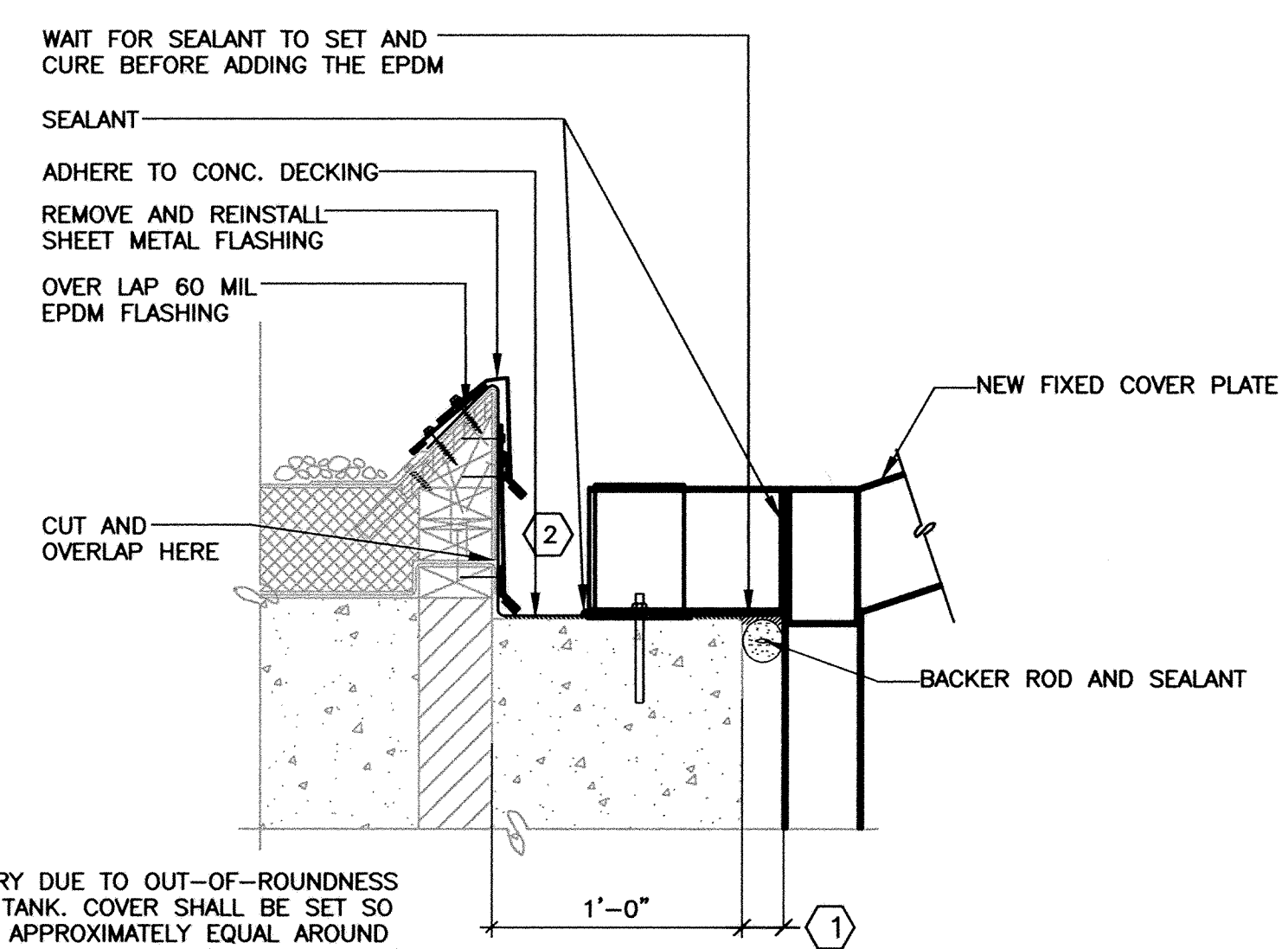


NOTE: FIELD VERIFY ALL EXISTING INFORMATION.

1 GUARDRAIL ATTACHMENT DETAIL

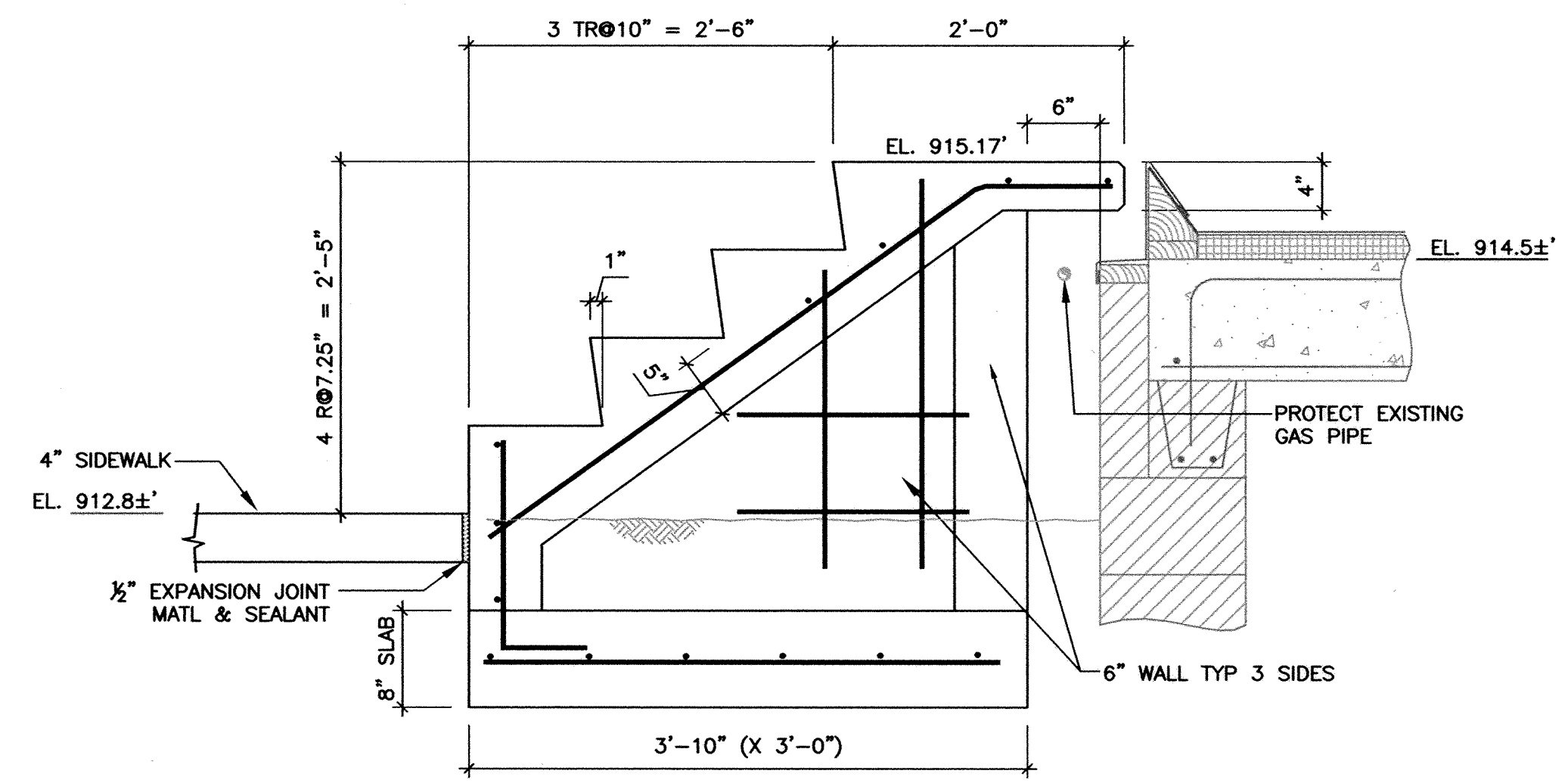
SCALE: 1-1/2"=1'-0"



- 1 NOTE: GAP WILL VARY DUE TO OUT-OF-ROUNDNESS OF EXISTING TANK. COVER SHALL BE SET SO THAT GAP IS APPROXIMATELY EQUAL AROUND PERIMETER OF TANK. GAP DIMENSION WILL BE APPROXIMATELY 2-1/4".
- 2 FILL IN VOID W/ TREATED 2 X 4'S AND 3/4" TREATED LUMBER

3 PRIMARY DIGESTER COVER AT DIGESTER BUILDING WALL DETAIL

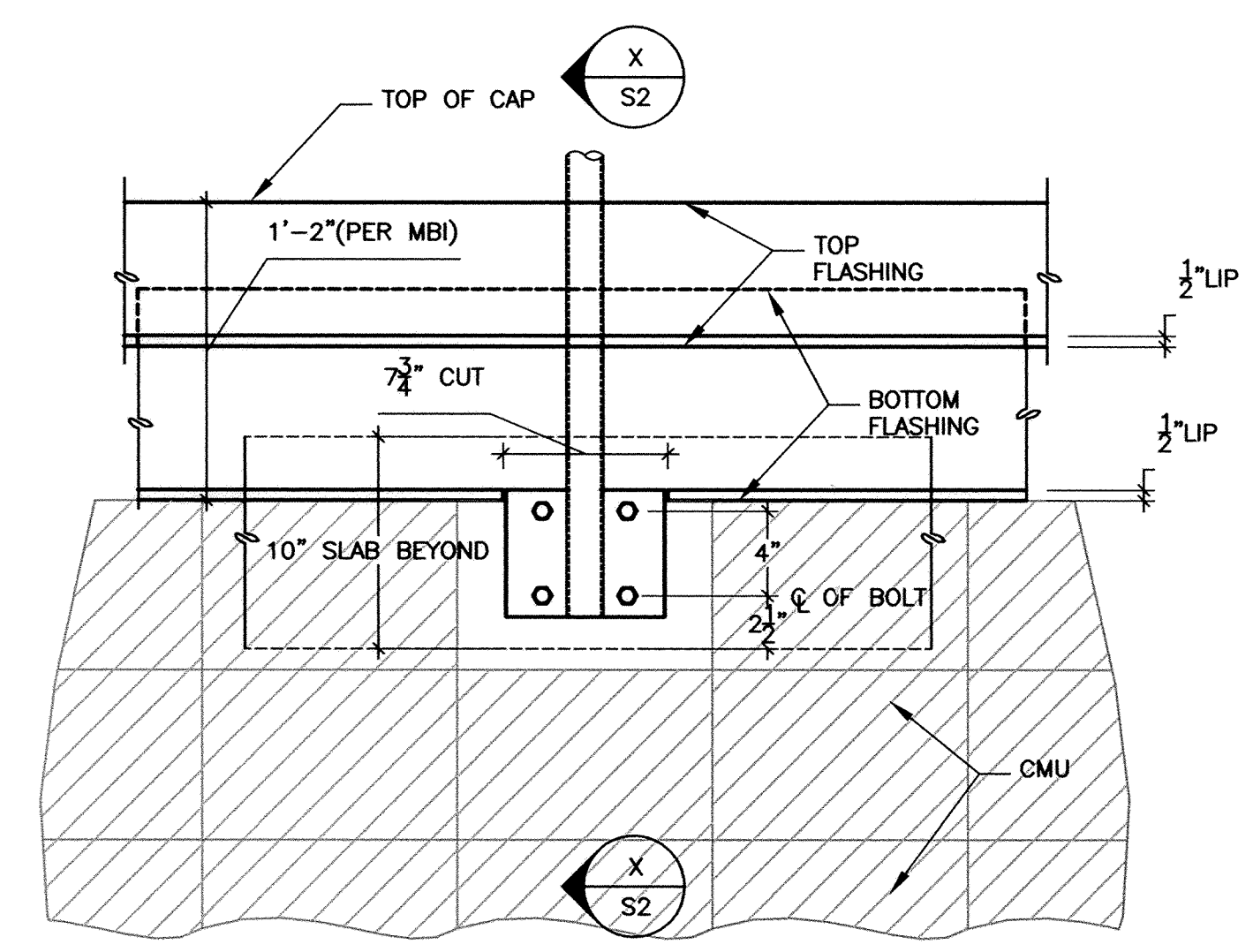
SCALE: 1-1/2"=1'-0"



5 STAIR DETAIL

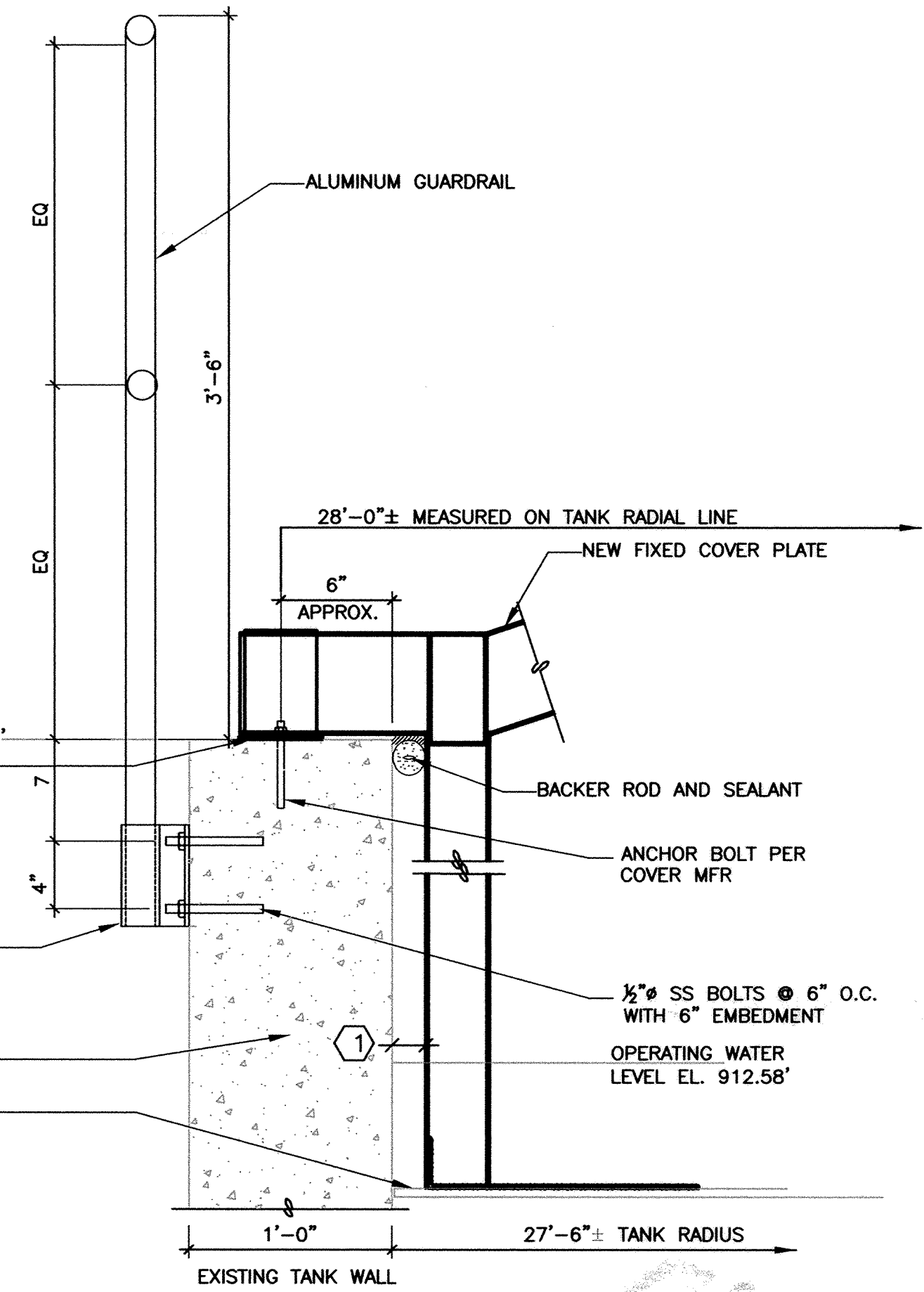
SCALE: 1"=1'-0"

- NOTES:
1. ALL REINF #3@8" AT CL SLAB OR WALL.
 2. FILL INTERIOR WITH GRANULAR FILL.
 3. PLACE STAIR ON MIN. 12" OF COMPACTED GRANULAR FILL.
 4. GRANULAR FILL = MNDOT COARSE FILTER AGGREGATE OR EQUAL.
 5. FIELD VERIFY ELEVATIONS.



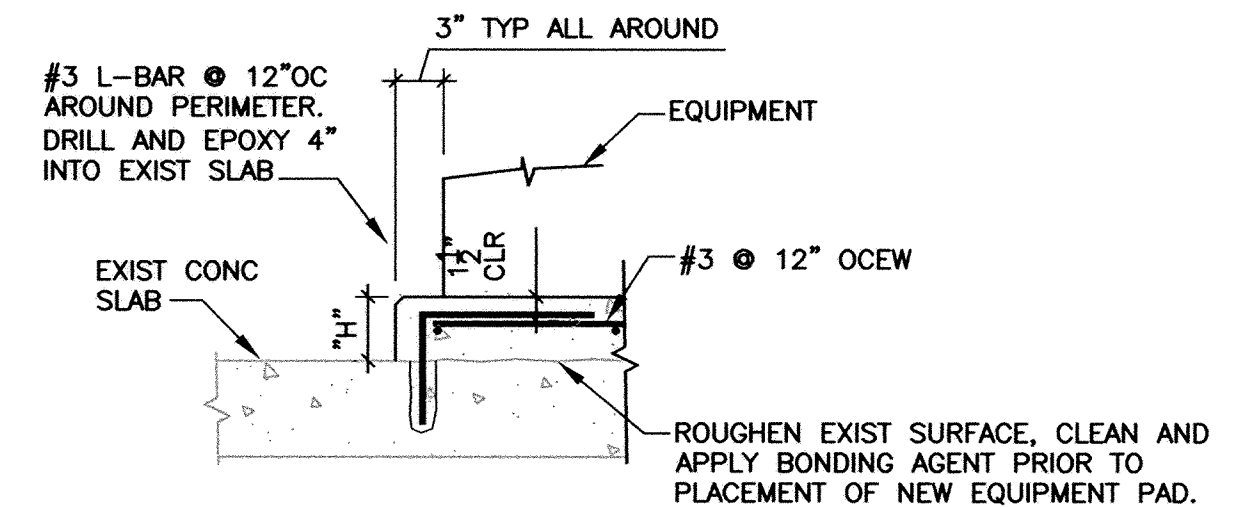
8 GUARDRAIL DETAIL

SCALE: 1"=1'-0"



2 PRIMARY DIGESTER GUARDRAIL ATTACHMENT DETAIL

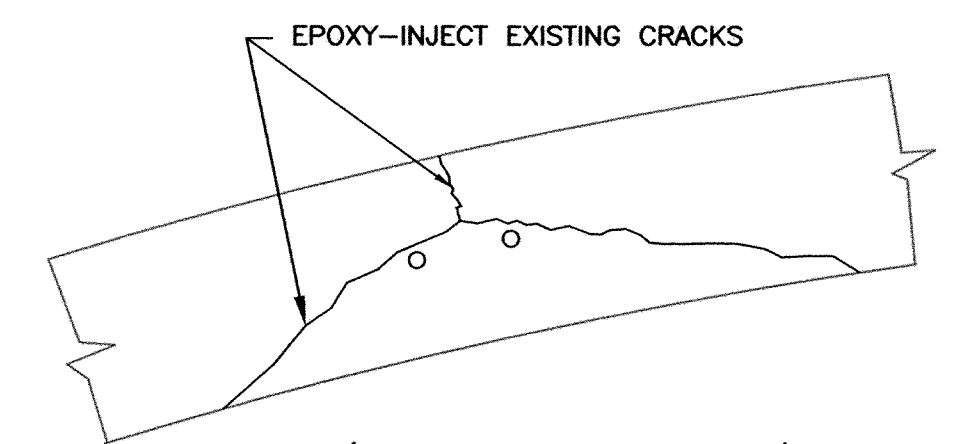
SCALE: 1-1/2"=1'-0"



4 EQUIPMENT PAD DETAIL

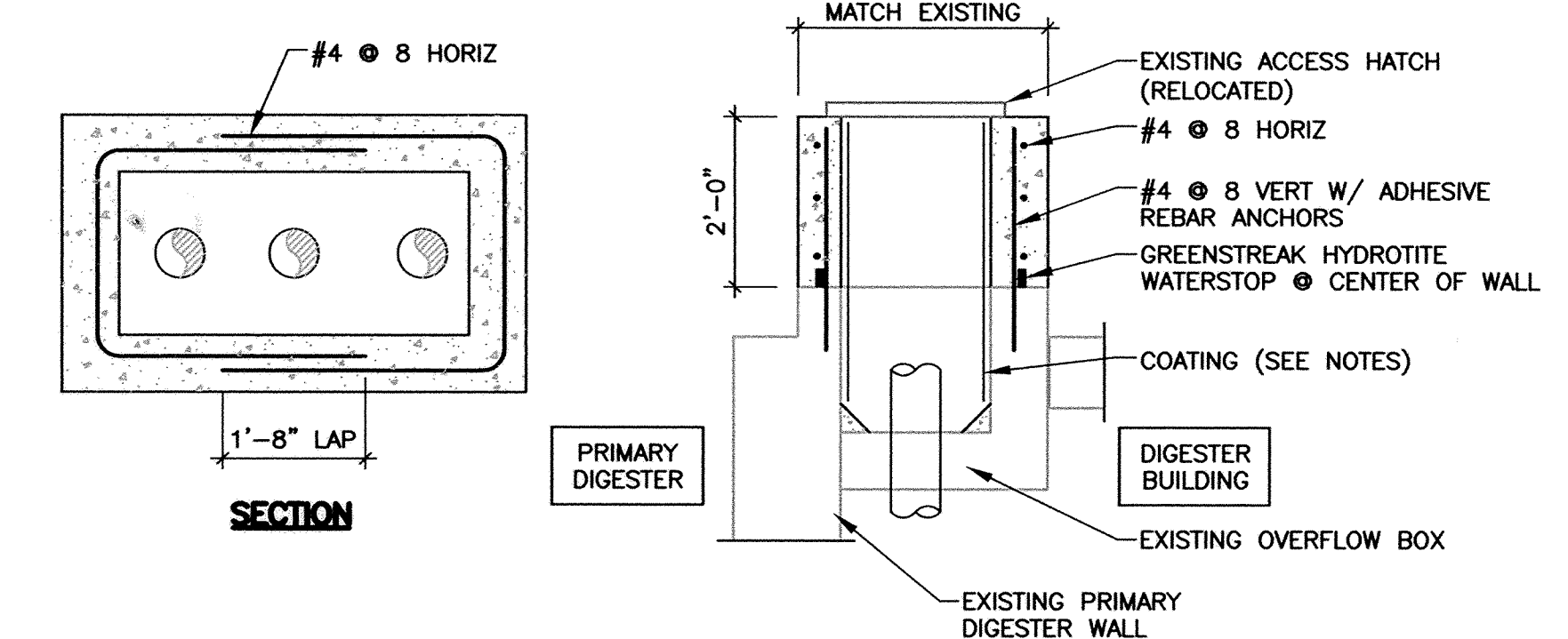
SCALE: 1"=1'-0"

- NOTE: "H" TO BE DETERMINED BY MOUNTING HEIGHT OF EQUIPMENT. FOR BIDDING PURPOSES ASSUME "H"=12"



6 BOLT PATCH DETAIL

SCALE: 1"=1'-0"



7 OVERFLOW BOX EXTENSION

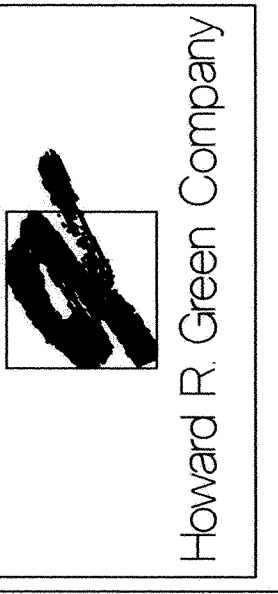
SCALE: 1/2"=1'-0"

- NOTES:
1. PREPARATION: CONCRETE SSPC-SP-13 SWEEP BLAST SYSTEM.
 2. T-Lock ON WALLS WITH FILLET ON BOTTOM JOINT. GROUT BETWEEN EXISTING WALL AND T-LOCK.

RECORD DRAWING

THIS DRAWING HAS BEEN REVISED TO REPRESENT THE RECORDS OF CONSTRUCTION AS BASED UPON BEST RECORDED INFORMATION AT THE TIME OF COMPLETION OF WORK SET FORTH ON THE DRAWING. HOWARD R. GREEN COMPANY SHALL NOT BE RESPONSIBLE FOR ANY ERRORS OR OMISSIONS THAT MAY HAVE BEEN INCORPORATED AS A RESULT OF ERRONEOUS INFORMATION PROVIDED BY OTHERS.

DATE: MAY 2005



Howard R. Green Company

Xrefs: J5X-00-S01.DWG

DESIGNED BY: DLN	DRAWN BY: CRR
APPROVED BY: DLN	JOB NUMBER: 822550J
CAD DATE: June 29, 2006 2:25:13 p.m.	
CAD FILE: 822550J\As-Built\DWGs\S\S-2.DWG (JMESSNE)	

I HEREBY CERTIFY THAT THIS PLAN, SPECIFICATION, OR REPORT WAS PREPARED BY ME OR UNDER MY DIRECT SUPERVISION AND THAT I AM A DULY LICENSED PROFESSIONAL ENGINEER UNDER THE LAWS OF THE STATE OF MINNESOTA.

SIGNATURE: _____ DATE: _____

PRINTED NAME: DENNIS L. NEUMANN LIC. NO. 19807

NO.	DATE	BY	REVISION DESCRIPTION
1	05/24/05	DRH	RECORD DRAWINGS



WWTP PRIMARY DIGESTER IMPROVEMENTS
CITY OF ELK RIVER
ELK RIVER, MINNESOTA 2004

STRUCTURAL
DETAILS AND NOTES

SHEET NO.
S-2