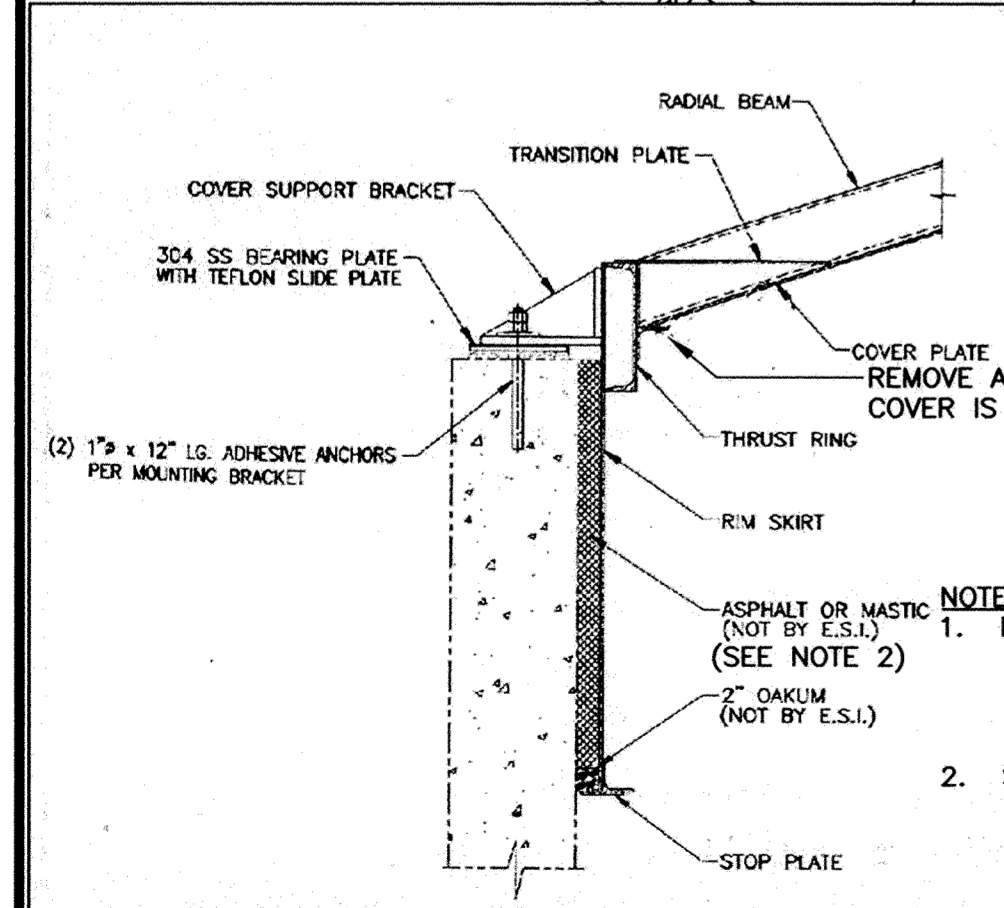


1 DIGESTER COMPLEX ROOF PLAN
SCALE: 1/4"=1'-0"

- GENERAL STRUCTURAL NOTES:**
- FIELD VERIFY ALL EXISTING CONDITIONS PRIOR TO FABRICATION.
 - DESIGN CODE: 2003 MN BUILDING CODE (IBC 2000 WITH MN AMENDMENTS)
 - CONCRETE:
 - A. F'c=4,500 PSI
 - B. W/C RATIO=0.45 MAX
 - C. COARSE AGGREGATE: ASTM C33, SIZE 67
 - D. AIR CONTENT 6% +/- 1%
 - E. CEMENT: ASTM C150 TYPE 2
 - F. SYNTHETIC FIBERS IN ALL CONC.: FIBERMESH OR EQ.
 - G. BONDING AGENT: LATEX, ASTM C1059 TYPE 2 - APPLIED AS SLURRY WITH STIFF BRUSH
 - H. SUBMIT MIX DESIGN 14 DAYS (MIN) PRIOR TO PLACING CONCRETE
 - I. FINISH: LIGHT BROOM STAIRS, SIDEWALK, TROWEL EQUIP PADS
 - J. CURING: MOIST CURE 7 DAYS MIN. PROTECT WITH POLY SHEETS.
 - K. PATCHING MORTAR: BONDING AGENT, CEMENT, FINE AGGREGATE.
 - L. REBAR: ASTM A615 Fy 60 KSI, UNCOATED
 - M. ADHESIVE (EPOXY) REBAR ANCHORS: POWERS-RAWL POWER-FAST OR EQUAL. EMBED DISTANCE LARGER OF: A) SHOWN ON DWGS OR B) EMBED TO DEVELOP 125% OF BAR YIELD STRENGTH PER MFR'S TABULATED VALUES. INSTALL IN STRICT ACCORDANCE WITH MFR. DIRECTIONS. SUBMIT MFR. INSTALLATION AND EMBEDMENT DATA. ALL ADHESIVE REBAR ANCHORS SUBJECT TO SPECIAL INSPECTIONS.
 - N. ADHERED WATERSTOP: GREENSTREAK "HYDROTITE" OR EQUAL.
 - METALS: SEE SPECIFICATIONS
 - SPECIAL INSPECTION:
 - A. EACH ADHESIVE ANCHOR AND ADHESIVE REBAR ANCHOR IS SUBJECT TO TWO SPECIAL INSPECTIONS AS FOLLOWS: 1-AFTER HOLE PREPARATION, 2-AT EPOXY/BAR/ROD INSTALLATION. NOTIFY ENGINEER 24 HOURS PRIOR TO INSPECTIONS.
 - REFER TO SECTION 01100 FOR CONSTRUCTION SEQUENCE.



1 DIGESTER COMPLEX EXISTING STAIR
SCALE: NTS



RECORD DRAWING

THIS DRAWING HAS BEEN REVISED TO REPRESENT THE RECORDS OF CONSTRUCTION AS BASED UPON BEST RECORDED INFORMATION AT THE TIME OF COMPLETION OF WORK SET FORTH ON THE DRAWING.

HOWARD R. GREEN COMPANY SHALL NOT BE RESPONSIBLE FOR ANY ERRORS OR OMISSIONS THAT MAY HAVE BEEN INCORPORATED AS A RESULT OF ERRONEOUS INFORMATION PROVIDED BY OTHERS.

DATE: MAY 2005

Howard R. Green Company

DESIGNED BY: DLN DRAWN BY: BMG
 APPROVED BY: DLN JOB NUMBER 822550J
 CAD DATE: June 29, 2006 2:24:53 p.m.
 CAD FILE: 822550J\As-Built\Drawings\S\S-1.DWG (JMESSN)

I HEREBY CERTIFY THAT THIS PLAN, SPECIFICATION, OR REPORT WAS PREPARED BY ME OR UNDER MY DIRECT SUPERVISION AND THAT I AM A DULY LICENSED PROFESSIONAL ENGINEER UNDER THE LAWS OF THE STATE OF MINNESOTA.

SIGNATURE: _____ DATE: _____
 PRINTED NAME: DENNIS L. NEUMANN LIC. NO. 19807

NO.	DATE	BY	REVISION DESCRIPTION
1	04/28/04	DRH	SOUTH STAIRS ON DIGESTER BLDG
2	05/24/05	DRH	RECORD DRAWINGS

Howard R. Green Company

WWTP PRIMARY DIGESTER IMPROVEMENTS
CITY OF ELK RIVER
ELK RIVER, MINNESOTA 2004

STRUCTURAL
PRIMARY DIGESTER/DIGESTER BUILDING
ROOF PLAN

SHEET NO.
S-1