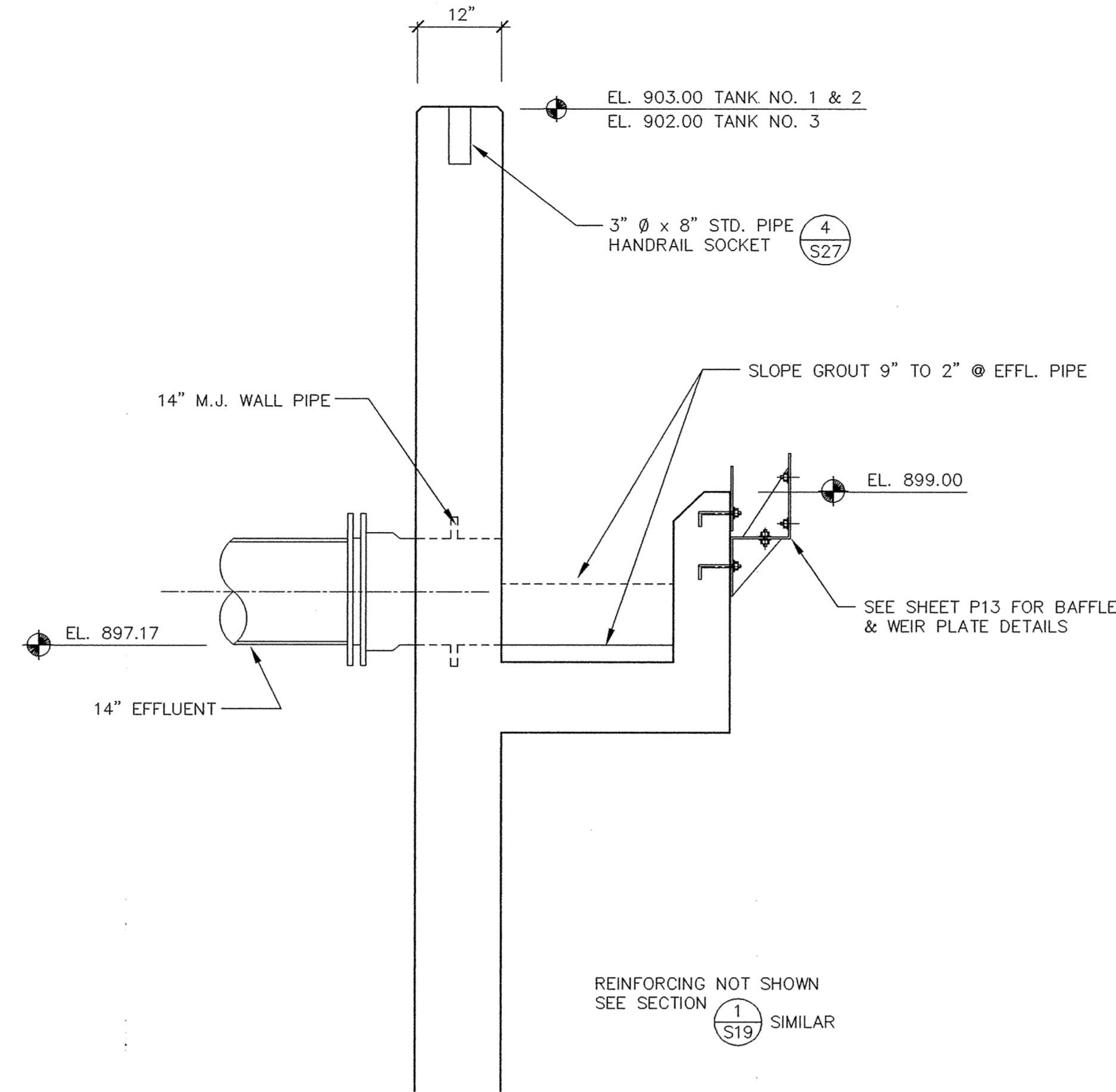


**SECTION 1**  
Scale: 3/8" = 1'-0" (S19)

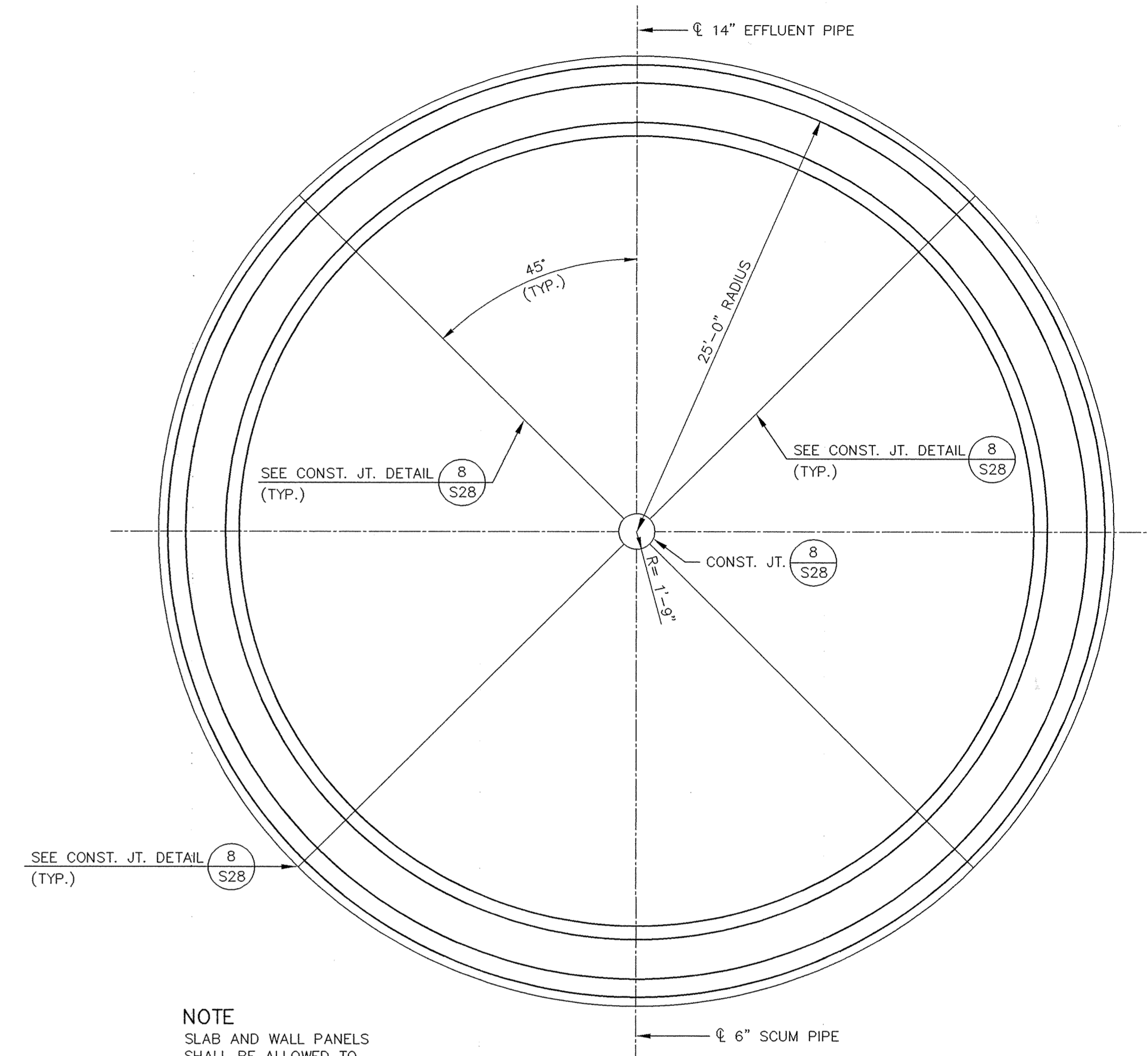
2" GROUT LAYER - PLACE AFTER MECHANICAL EQUIP. IS INSTALLED SEE NOTE BELOW.

**GROUT LAYER NOTE**

1. PLACE CONC. BONDER OVER BASE SLAB PRIOR TO GROUTING.
2. TOP OF BASE SLAB TO BE ROUGH WOOD FLOAT FINISHED AND SAND BLAST CLEANED PRIOR TO PLACING BONDER.



**EFFLUENT TROUGH DETAIL 2**  
Scale: 3/4" = 1'-0" (S19)



**NOTE**

SLAB AND WALL PANELS SHALL BE ALLOWED TO CURE 14 DAYS TIME BEFORE ADJACENT PANELS ARE POURED.

PIPE ORIENTATION SHOWN IS FOR CLARIFIER NO. 1, SEE SHEET C5 FOR CLARIFIER NO. 2 & 3 ORIENTATION.

**FINAL CLARIFIER CONSTRUCTION JOINT PLAN**  
Scale: 3/16" = 1'-0" (North Arrow)

I HEREBY CERTIFY THAT THIS PLAN, SPECIFICATION, OR REPORT WAS PREPARED BY ME OR UNDER MY DIRECT SUPERVISION AND THAT I AM A DULY REGISTERED PROFESSIONAL ENGINEER UNDER THE LAWS OF THE STATE OF MINNESOTA.

*David L. Conell*  
DATE 11/10/95 REG. NO. 22222



1326 ENERGY PARK DRIVE  
ST. PAUL, MINNESOTA 55108  
(612) 644-4389

9800 SHELARD PARKWAY  
MINNEAPOLIS, MINNESOTA 55441  
(612) 546-0432

REVISIONS	DATE	DESCRIPTION	DESIGNED DLC/GG
			CHECKED JAR
			DRAWN TB
			GRAPHIC SCALE
			0 HORIZ. 2.67
			0 VERT. 2.67

CITY OF ELK RIVER  
WASTEWATER TREATMENT FACILITY UPGRADE  
FINAL CLARIFIER NO. 1, NO. 2 AND NO. 3  
PLAN & SECTIONS

S19