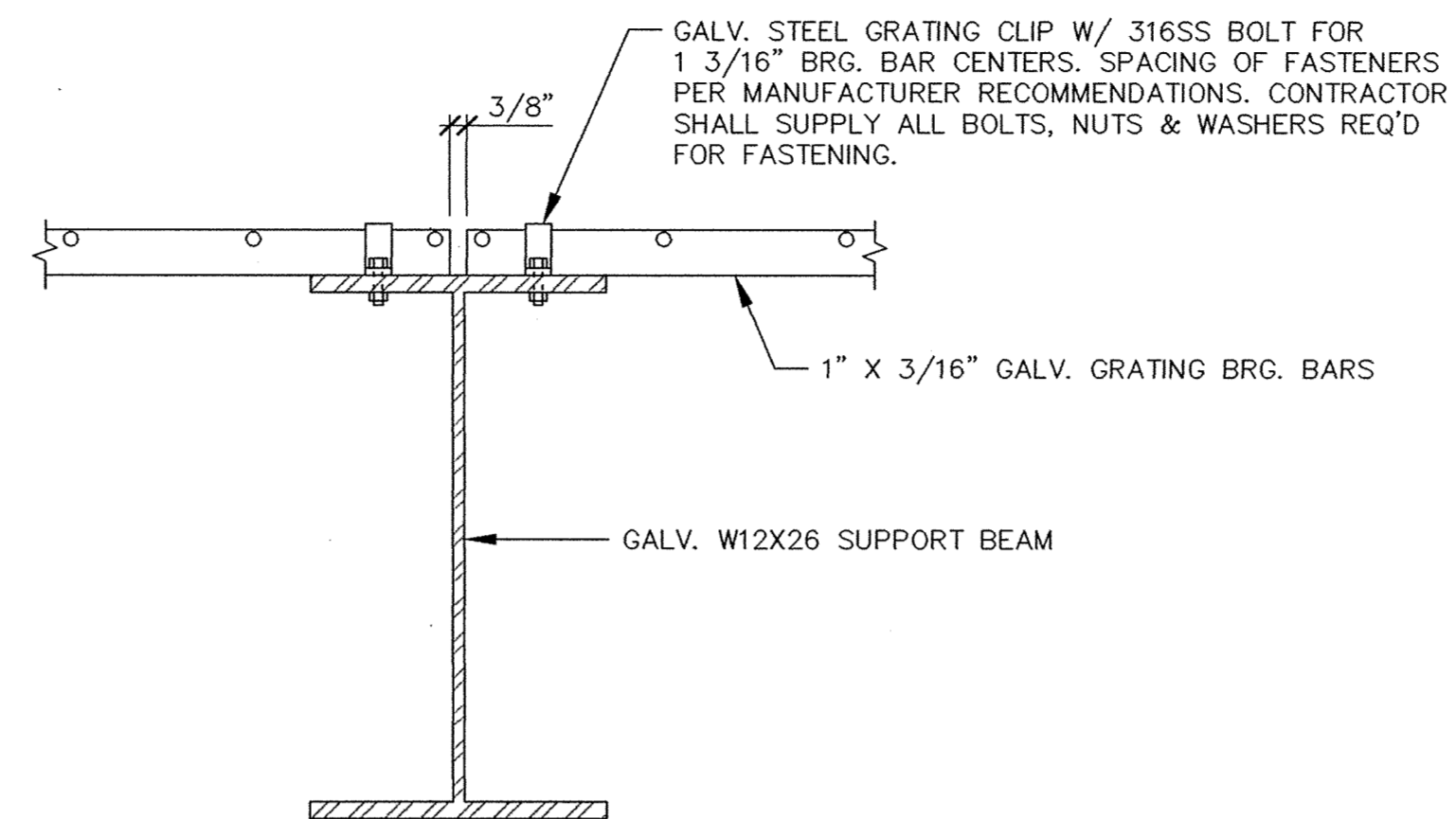
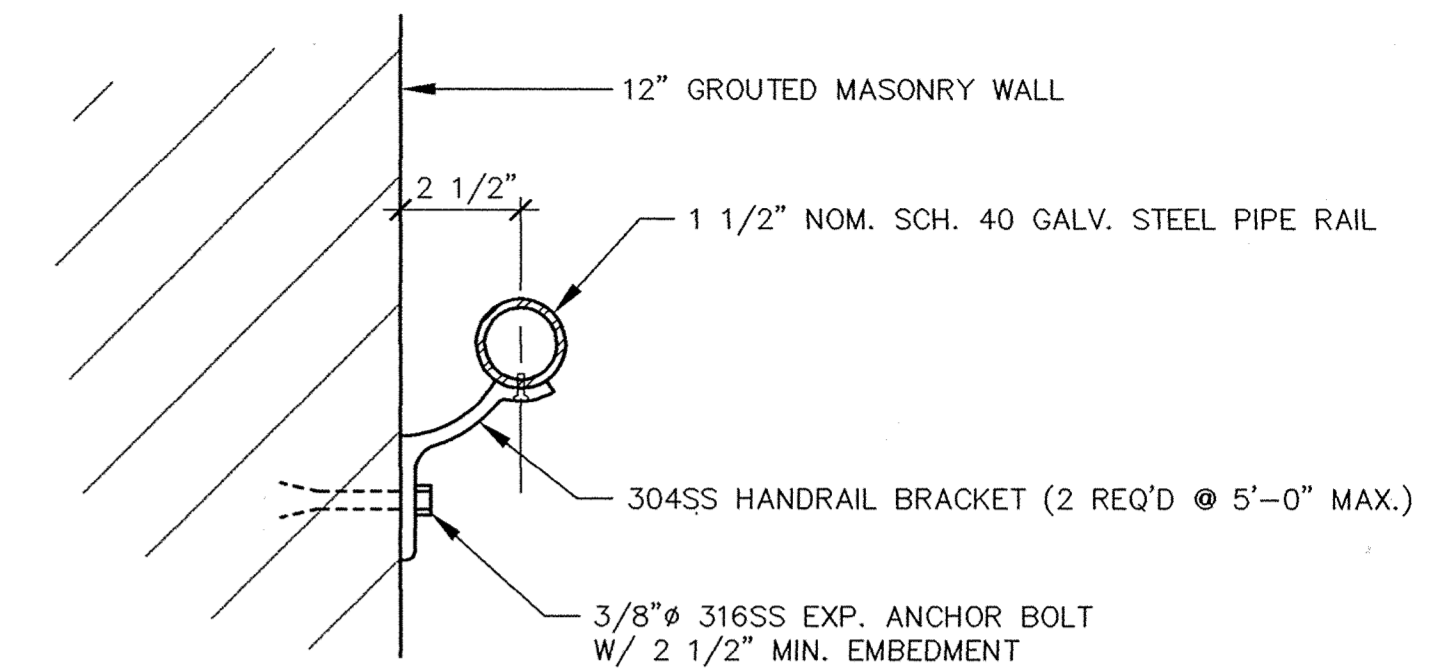


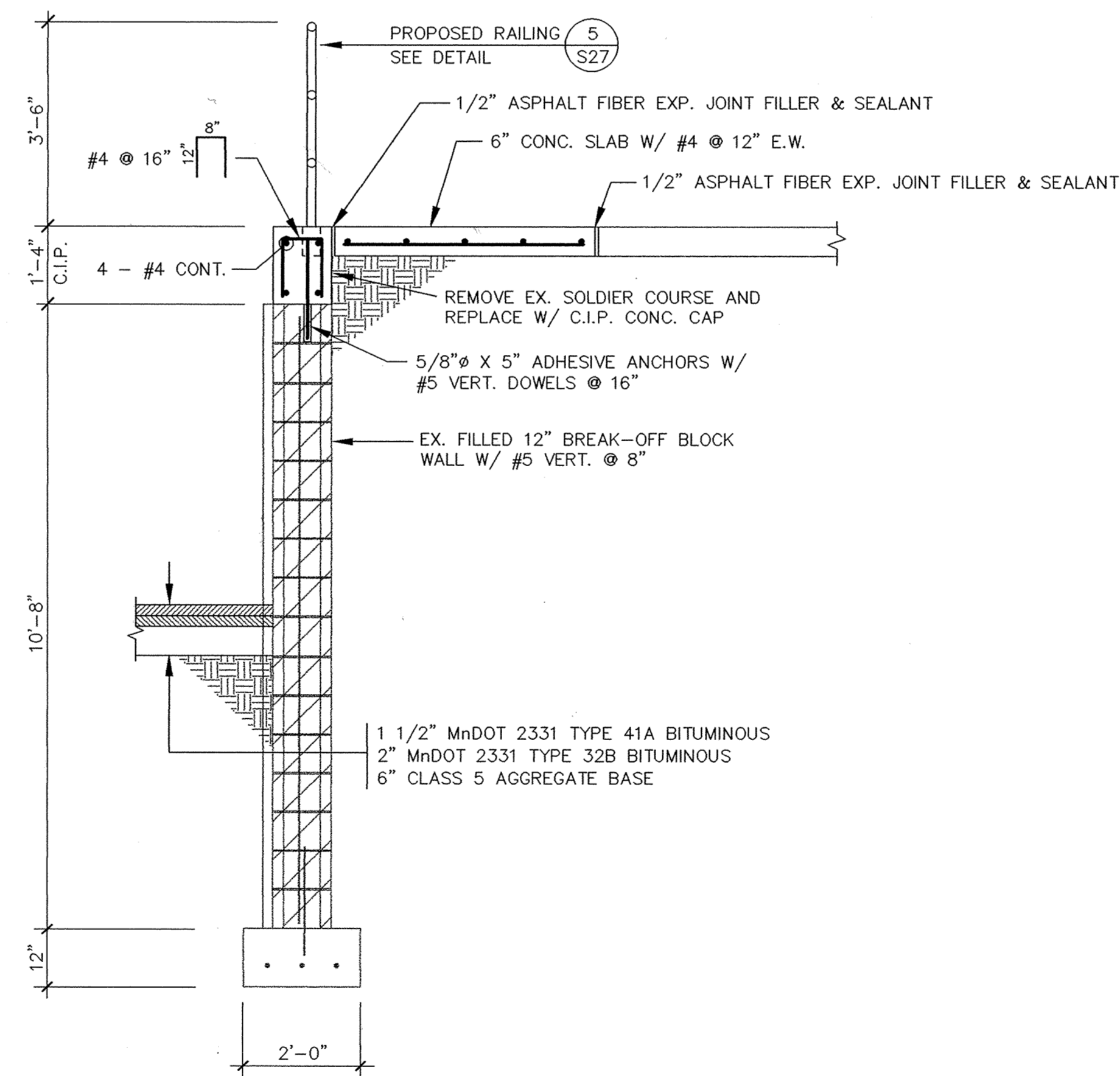
GRATE FASTENING DETAIL 3
 Scale: 3" = 1'-0"



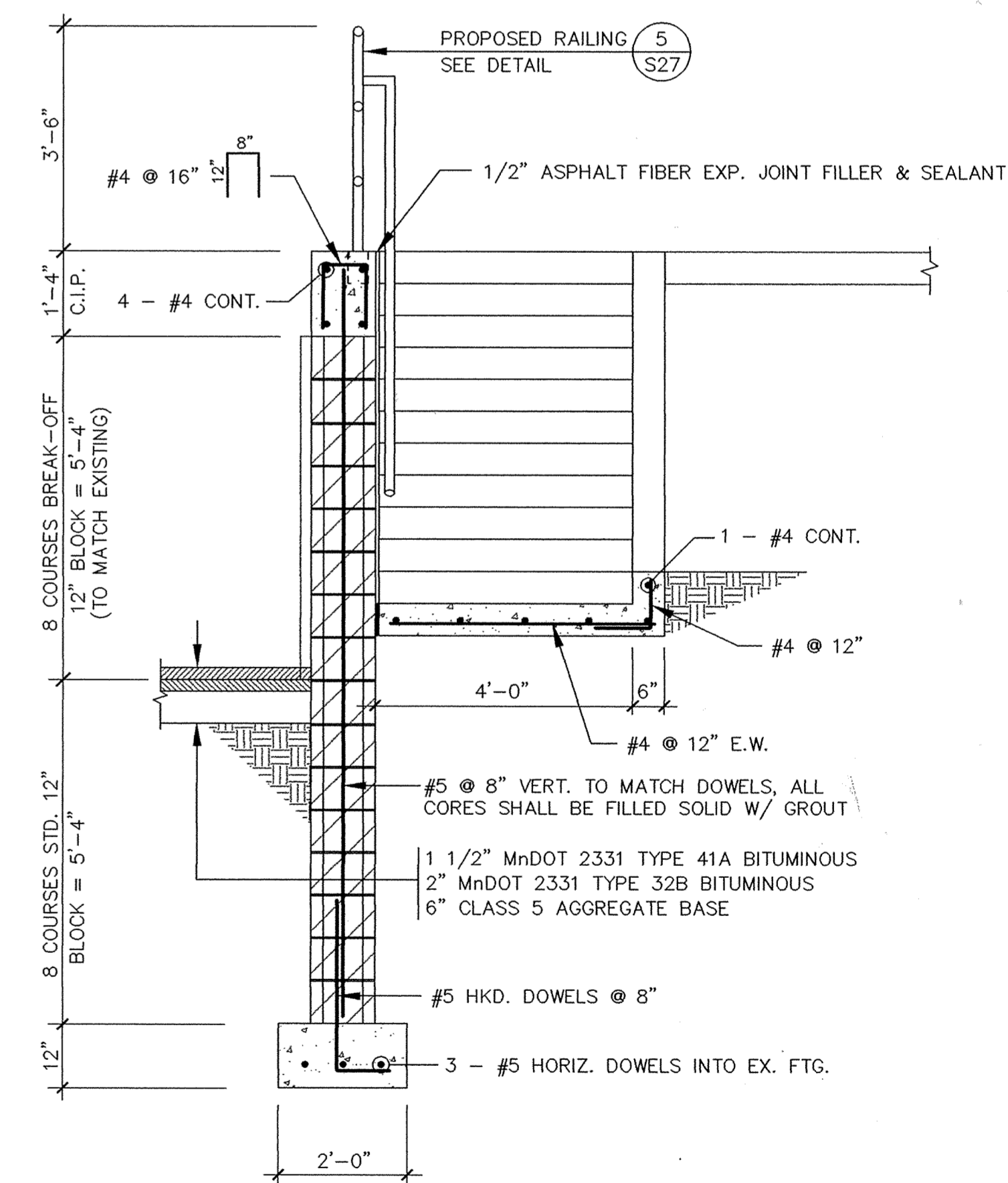
GRATE FASTENING DETAIL 4
 Scale: 3" = 1'-0"



HANDRAIL BRACKET DETAIL 5
 Scale: 3" = 1'-0"

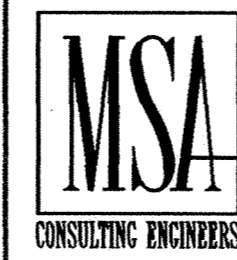


EXISTING RETAINING WALL SECTION 1
 Scale: 1/2" = 1'-0"



RETAINING WALL EXTENSION SECTION 2
 Scale: 1/2" = 1'-0"

I HEREBY CERTIFY THAT THIS PLAN, SPECIFICATION, OR REPORT WAS PREPARED BY ME OR UNDER MY DIRECT SUPERVISION AND THAT I AM A DULY REGISTERED PROFESSIONAL ENGINEER UNDER THE LAWS OF THE STATE OF MINNESOTA.
 DATE: 11/17/95 REG. NO. 22222



1326 ENERGY PARK DRIVE
 ST. PAUL, MINNESOTA 55108
 (612) 644-4389
 9800 SHELARD PARKWAY
 MINNEAPOLIS, MINNESOTA 55441
 (612) 546-0432

REVISIONS	DATE	DESCRIPTION	DESIGNED DLG GG	CHECKED LJJ	DRAWN GG

CITY OF ELK RIVER
 WASTEWATER TREATMENT FACILITY UPGRADE
 EXISTING PRETREATMENT BUILDING MODIFICATIONS
 SECTIONS & DETAILS
 DATE OCT. 1995 SHEET 25 OF 112 SHEETS PROJECT NO. 230-151

S5