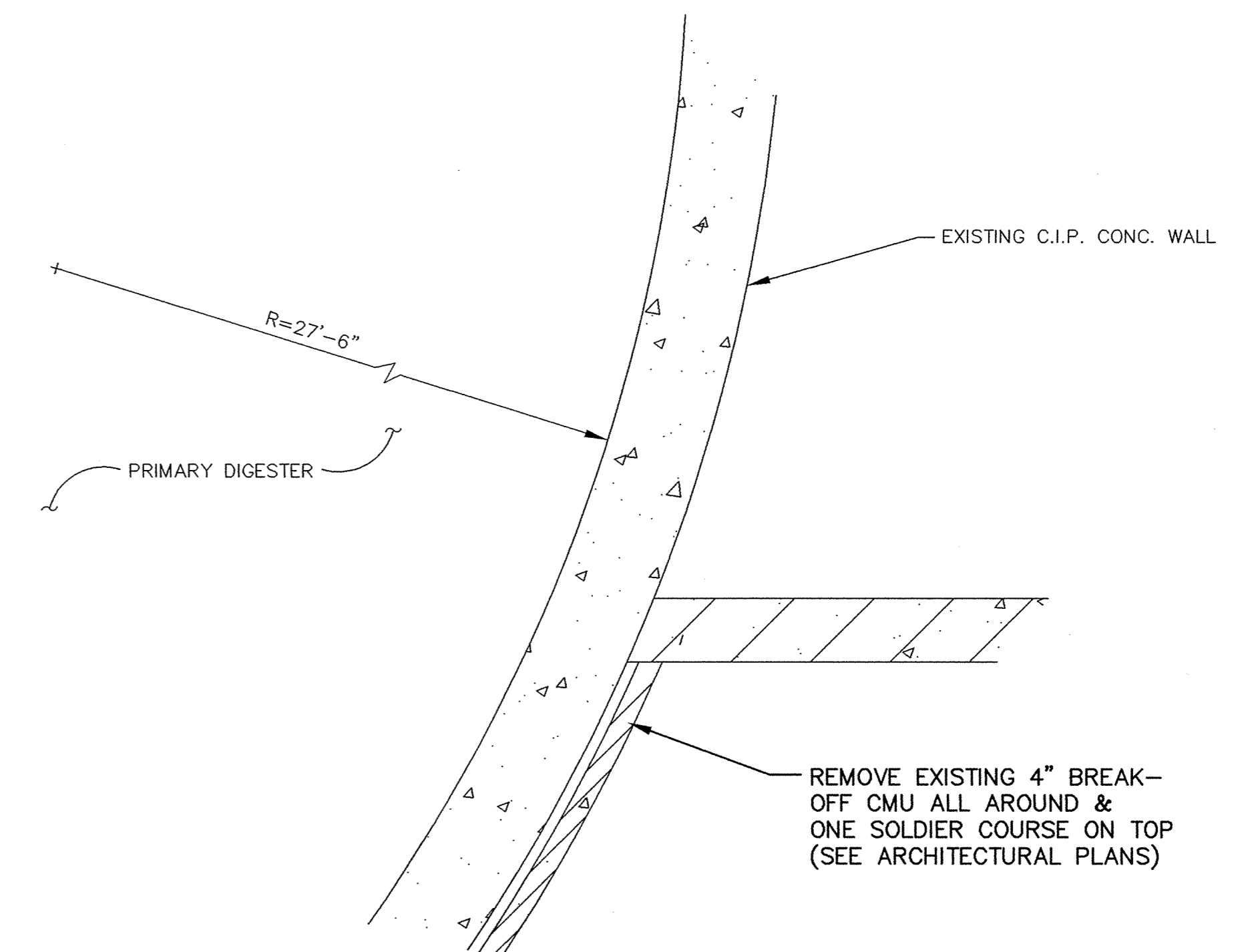


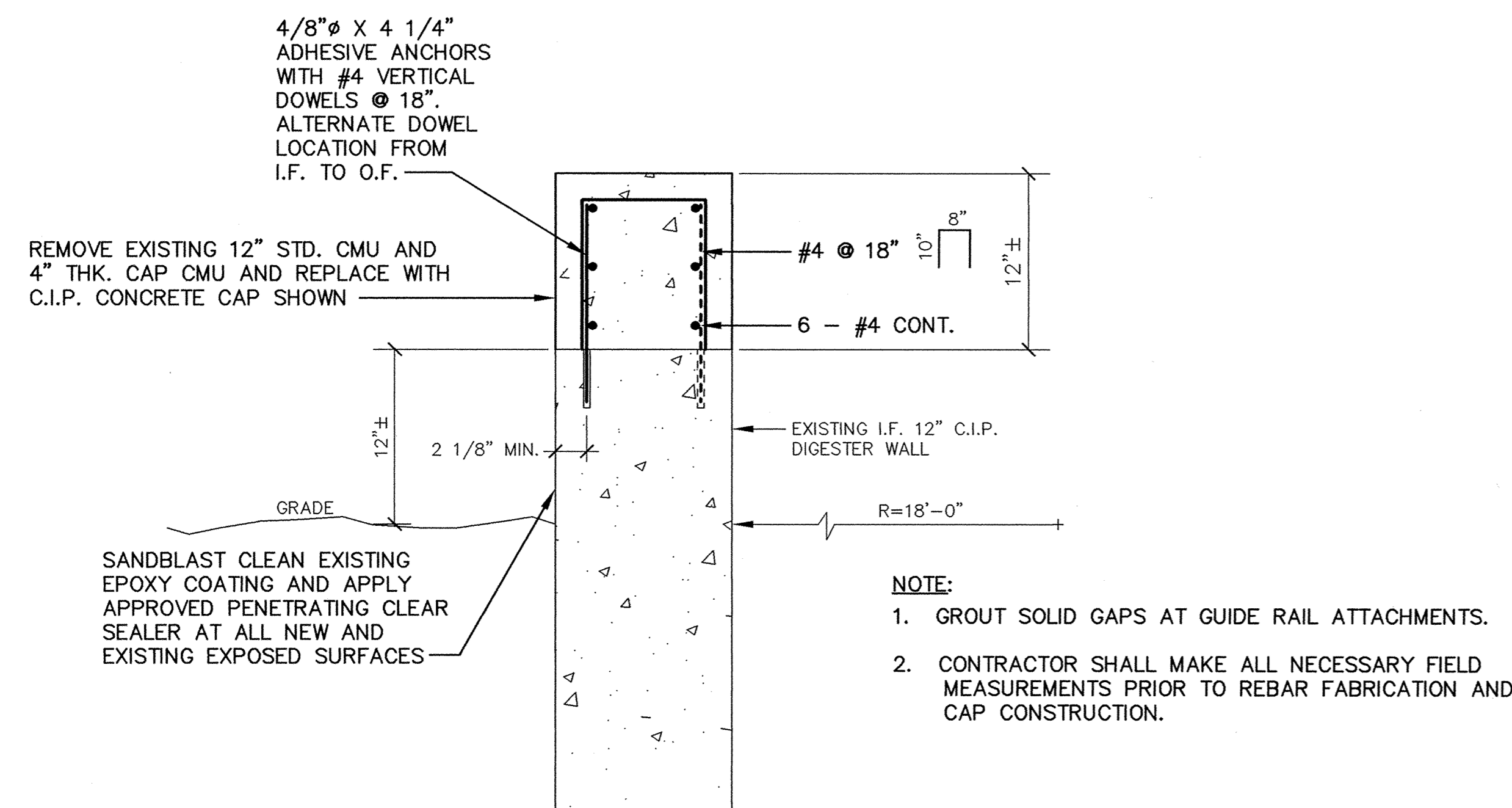
**SECONDARY DIGESTER WALL REPAIR PLAN**

Scale: 1/2" = 1'-0"



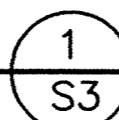
**PRIMARY DIGESTER WALL DEMOLITION AND REPAIR PLAN**

Scale: 1/2" = 1'-0"



**EXISTING SECONDARY DIGESTER DEMOLITION AND REPAIR TYPICAL SECTION**

Scale: 1 1/2" = 1'-0"



I HEREBY CERTIFY THAT THIS PLAN, SPECIFICATION, OR REPORT WAS PREPARED BY ME OR UNDER MY DIRECT SUPERVISION AND THAT I AM A DULY REGISTERED PROFESSIONAL ENGINEER UNDER THE LAWS OF THE STATE OF MINNESOTA.

*[Signature]*  
DATE 11/19/95 REG. NO. 2222



1326 ENERGY PARK DRIVE  
ST. PAUL, MINNESOTA 55108  
(612) 644-4389

9800 SHELARD PARKWAY  
MINNEAPOLIS, MINNESOTA 55441  
(612) 546-0432

REVISIONS	DATE	DESCRIPTION	DESIGNED <u>DLC</u>
			CHECKED <u>DLC</u>
			DRAWN <u>CLS</u>
			GRAPHIC SCALE
			0 HORIZ. 2
			0 VERT. 2

CITY OF ELK RIVER  
WASTEWATER TREATMENT FACILITY UPGRADE  
DIGESTER  
DEMOLITION PLAN AND REPAIR SECTION

**S3**

DATE OCT. 1995 SHEET 23 OF 112 SHEETS PROJECT NO. 230-151