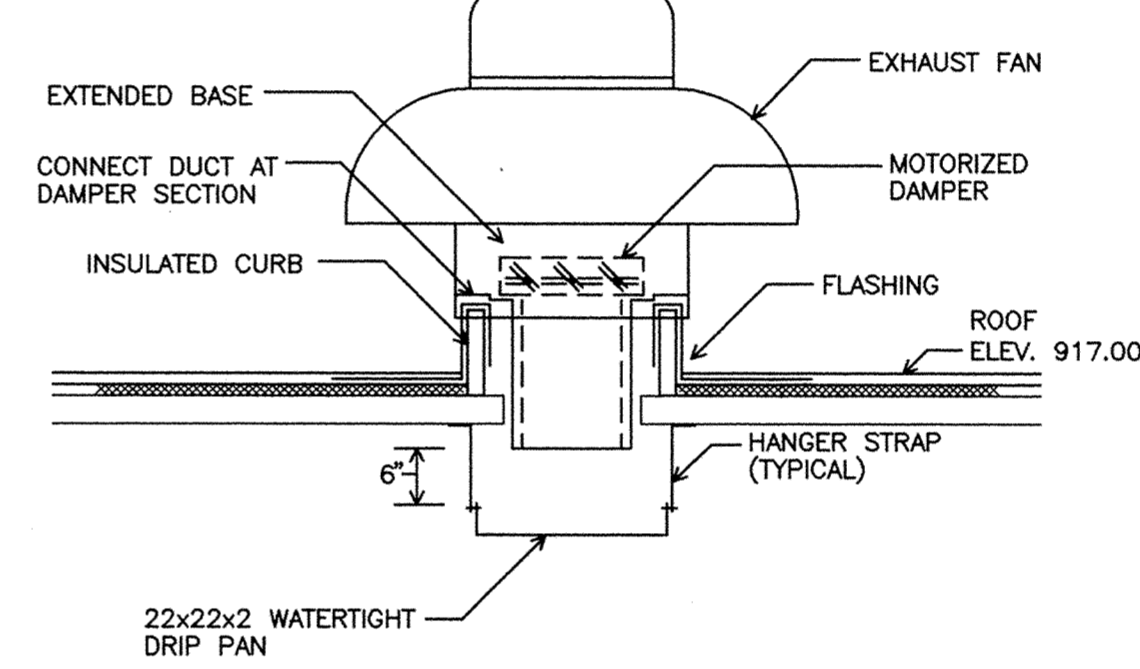
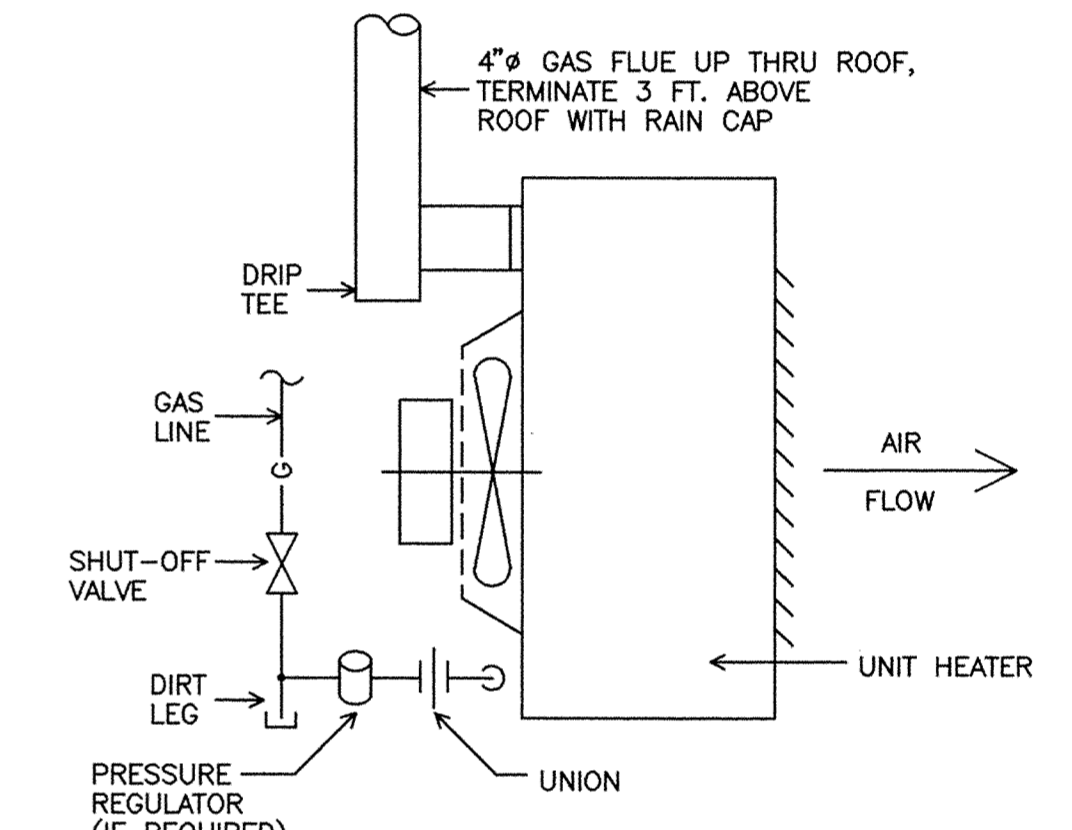


TRICKLING FILTER PUMP STATION VENTILATION PLAN
 SCALE: 3/8" = 1'-0"
 FIRST LEVEL F.F.E. 906.00

1 ROOF MOUNTED EXHAUST FAN DETAIL
 NO SCALE



2 UNIT HEATER DETAIL
 NO SCALE



EXHAUST FANS

FAN NO.	LOCATION	SERVICE	MODEL NO. *	FAN TYPE	CAPACITY CFM	S.P. *W.G.	ROOF OPENING *SQ	TIP SPEED FPM	EST. FAN RPM	SONES	DRIVE	MOTOR TYPE	H.P.	R.P.M.	ELECTRICAL CHARACTERISTICS	ACCESSORIES	REMARKS	INTER-LOCK WITH
EF-1	ROOF	PUMP STATION	GB-180	PRV	3150	0.75	20-1/2	5000	1030	12.9	BELT	OPEN	3/4	1750	480/60/3	ROOF CURB, EXTENDED BASE, 120V MOT. DAMPER		GV-1

* BASED ON: GREENHECK

GAS-FIRED UNIT HEATERS

UNIT NO.	LOCATION	MODEL NO. *	UNIT TYPE	FAN TYPE	CFM	AIR ENT. F.	GAS INLET PRESSURE P.S.I.G.	INPUT MBH	OUTPUT MBH	POWER VENTER	H.P.	RPM	ELECTRICAL CHARACTERISTICS	CONTROLS	REMARKS
UH-1	LOWER LEVEL	GPND-003	HORIZ	PROP	700	60	7" W.G.	30.0	24.3	NO	1/30	1050	115/60/1	24V REMOTE T-STAT	

* BASED ON: TRANE

GRAVITY VENTS

UNIT NO.	LOCATION	SERVING	MODEL NO. *	TYPE	CFM	S.P. *W.G.	ROOF OPENING SIZE INCHES	CURB HEIGHT INCHES	ACCESSORIES	REMARKS
GV-1	ROOF	PUMP STATION	FABRA	INTAKE	3150	0.10	24 30	12	ROOF CURB, 120V MOT. DAMPER	

* BASED ON: GREENHECK

This drawing was prepared by:
 Wentz Associates, Inc.
 7300 France Avenue South
 Suite 330
 Minneapolis, MN 55435
 Telephone: (612) 831-1180
 Fax: (612) 831-2179

I HEREBY CERTIFY THAT THIS PLAN, SPECIFICATION, OR REPORT WAS PREPARED BY ME OR UNDER MY DIRECT SUPERVISION AND THAT I AM A DULY REGISTERED PROFESSIONAL ENGINEER UNDER THE LAWS OF THE STATE OF MINNESOTA.
Thomas G. Wentz
 DATE 01 MAR 94 REG. NO. 12866



1326 ENERGY PARK DRIVE
 ST. PAUL, MINNESOTA 55108
 (612) 644-4389
 9800 SHELARD PARKWAY
 MINNEAPOLIS, MINNESOTA 55441
 (612) 546-0432

DATE	DESCRIPTION	DESIGNED	TAW
		CHECKED	TAW
		DRAWN	SRS
		GRAPHIC SCALE	
		0 HORIZ.	
		0 VERT.	

CITY OF ELK RIVER
 WASTEWATER TREATMENT FACILITIES
 TRICKLING FILTER PUMP STATION
 VENTILATION PLAN

M2