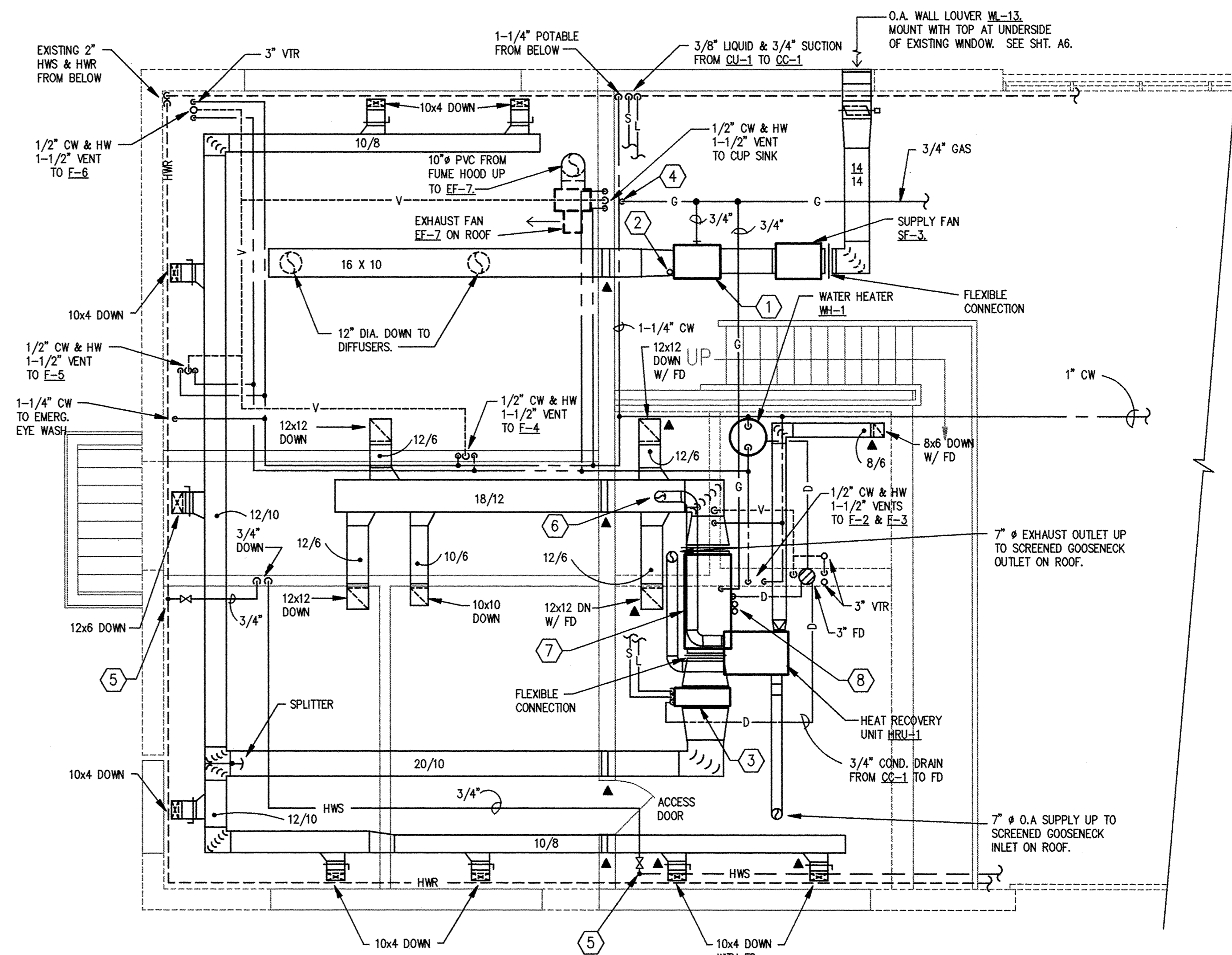
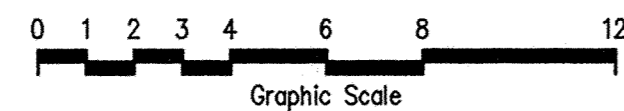


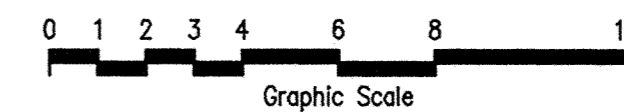
MAIN BUILDING FIRST FLOOR PLAN

SCALE: 1/4" = 1'-0"



MAIN BUILDING MECHANICAL LEVEL FLOOR PLAN

SCALE: 1/4" = 1'-0"



GENERAL NOTES:

- 1 - PROVIDE FIRE DAMPERS WHERE INDICATED "▲".
- 2 - PROVIDE MANUAL BALANCING DAMPERS ON BRANCH DUCTWORK TO ALL SUPPLY OUTLETS.
- 3 - MOUNT GAS FURNACE GF-1 AND ITS SUPPLY AND RETURN DUCTWORK WITH 12 INCHES OF CLEARANCE ABOVE MECHANICAL MEZZANINE FLOOR.

NUMBERED NOTES:

- ① DUCT FURNACE DF-1, HANG FROM STRUCTURE AS HIGH AS POSSIBLE.
- ② 4" GAS VENT UP THROUGH ROOF, TERMINATE AT 3 FT. ABOVE ROOF W/ RAIN CAP.
- ③ NEW COOLING COIL CC-1. SECURELY ATTACH TO DUCTWORK AND ANCHOR TO MECH. MEZZANINE FLOOR. ALLOW ADEQUATE SPACE FOR CONDENSATE DRAIN. PIPE TRAPPED DRAIN TO FLOOR DRAIN.
- ④ PROVIDE 1/2" GAS DROP TO FUME HOOD. PROVIDE GAS PRESSURE REGULATOR AND SHUT-OFF VALVE ON GARAGE SIDE OF WALL.
- ⑤ CONNECT NEW HWS & R TO EXISTING MAIN. PROVIDE SHUT-OFF VALVES AND ROUTE TO NEW CABINET UNIT HEATER CUH-1.
- ⑥ PIPE 7"Ø SUPPLY FROM HEAT RECOVERY UNIT TO RETURN PLENUM OF GAS FURNACE GF-1.
- ⑦ GAS FURNACE GF-1. ROUTE NEW 3/4" GAS TO FURNACE. PROVIDE GAS PRESSURE REGULATOR. PROVIDE FLEXIBLE DUCT CONNECTIONS ON SUPPLY AND RETURN DUCTWORK. SECURELY SUPPORT GAS FURNACE TO MECHANICAL MEZZANINE FLOOR ALLOWING ADEQUATE SPACE FOR PIPING CONNECTIONS.
- ⑧ 2" PVC VENT/INTAKE AIR PIPE UP TO CONCENTRIC ROOF TERMINATION. 1/2" CONDENSATE DRAIN FROM VENT TO FLOOR DRAIN. INSTALL VENT/INTAKE AIR PIPE AND DRAIN PER MANUFACTURERS INSTALLATION INSTRUCTIONS.

This drawing was prepared by:
 Wentz Associates, Inc.
 7300 France Avenue South
 Suite 330
 Minneapolis, MN 55435
 Telephone: (612) 831-1180
 Fax: (612) 831-2179

I HEREBY CERTIFY THAT THIS PLAN, SPECIFICATION, OR REPORT WAS PREPARED BY ME OR UNDER MY DIRECT SUPERVISION AND THAT I AM A DULY REGISTERED PROFESSIONAL ENGINEER UNDER THE LAWS OF THE STATE OF MINNESOTA.
Thomas A. Wentz
 DATE 09 OCT 95 REG. NO. 18609



1326 ENERGY PARK DRIVE
 ST. PAUL, MINNESOTA 55108
 (612) 644-4389
 9800 SHELARD PARKWAY
 MINNEAPOLIS, MINNESOTA 55441
 (612) 546-0432

REVISIONS	DATE	DESCRIPTION

DESIGNED	TAW
CHECKED	TAW
DRAWN	SRS

CITY OF ELK RIVER
 WASTEWATER TREATMENT FACILITIES
 MAIN BUILDING PARTIAL MECHANICAL PLANS

M8