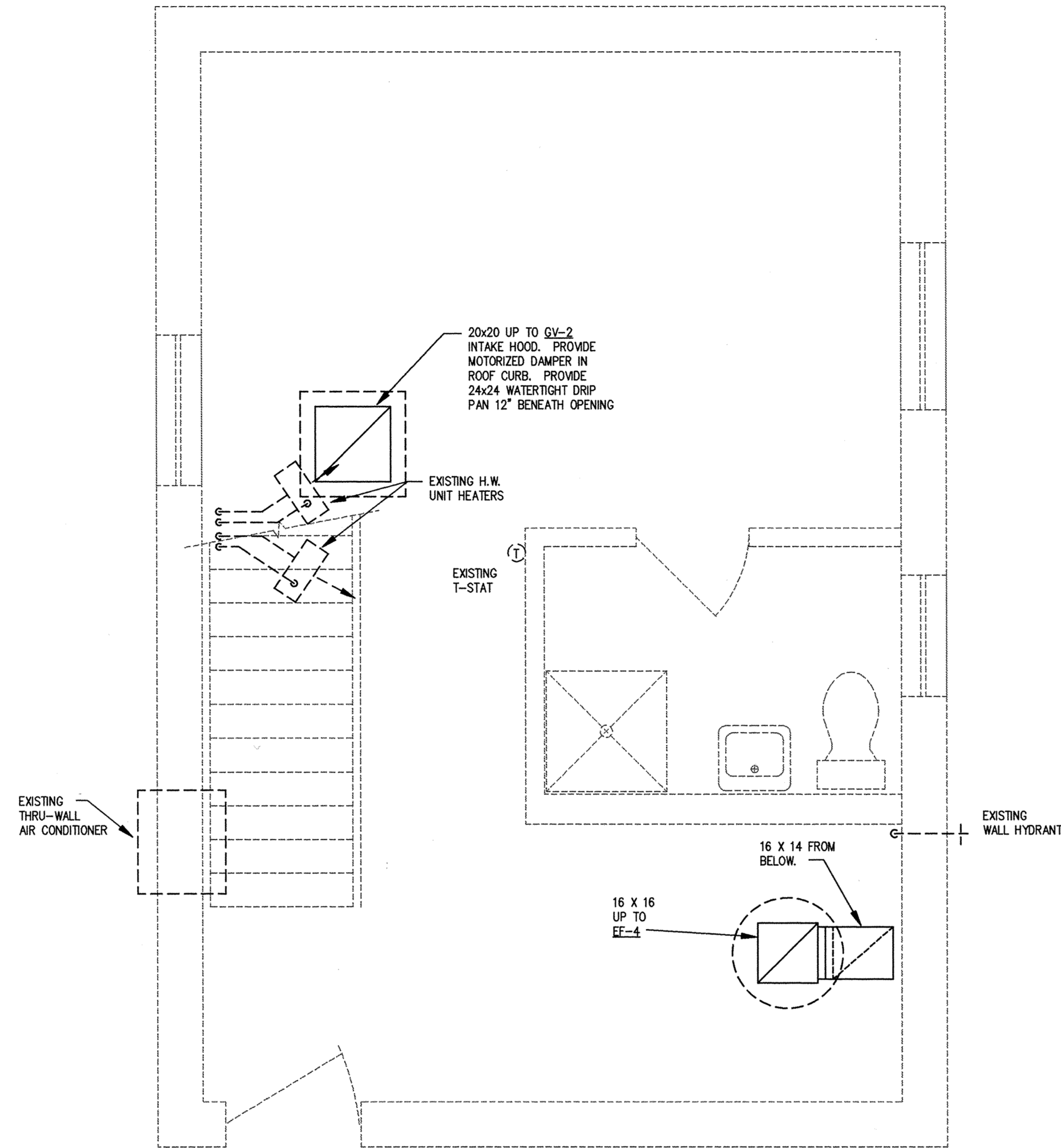


GENERAL NOTES

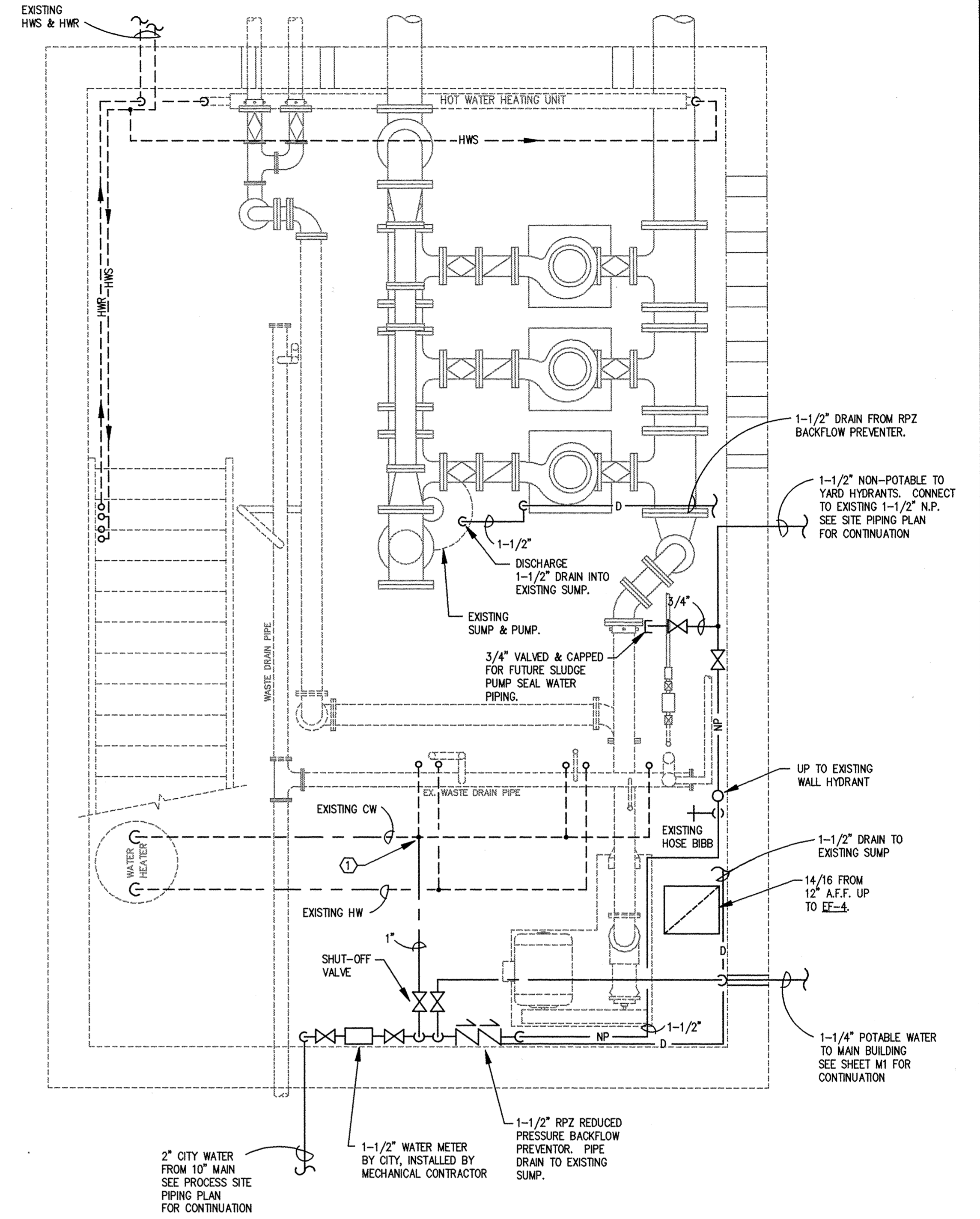
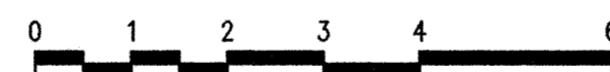
- 1 - HOT AND COLD WATER PIPING TO REMAIN TO EXISTING WATER CLOSET, LAVATORY, SHOWER AND WATER HEATER.

NUMBERED NOTES

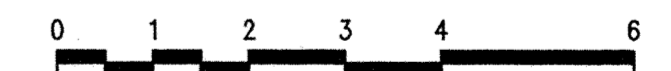
- ① CONNECT NEW 1" VALVED POTABLE C.W. TO EXISTING COLD WATER. VERIFY EXACT TIE-IN LOCATION.



North ↑ **1** CONTROL BUILDING MECHANICAL PLAN FIRST FLOOR
M5 SCALE: 1/2"=1'-0"



North ↑ **2** CONTROL BUILDING MECHANICAL PLAN BASEMENT FLOOR
M5 SCALE: 1/2"=1'-0"



This drawing was prepared by:
Wentz Associates, Inc.
7300 France Avenue South
Suite 330
Minneapolis, MN 55435
Telephone: (612) 831-1180
Fax: (612) 831-2179

I HEREBY CERTIFY THAT THIS PLAN, SPECIFICATION, OR REPORT WAS PREPARED BY ME OR UNDER MY DIRECT SUPERVISION AND THAT I AM A DULY REGISTERED PROFESSIONAL ENGINEER UNDER THE LAWS OF THE STATE OF MINNESOTA.
Thomas A. Wentz
DATE 09 OCT 95 REG. NO. 18609



1326 ENERGY PARK DRIVE
ST. PAUL, MINNESOTA 55108
(612) 644-4389

9800 SHELARD PARKWAY
MINNEAPOLIS, MINNESOTA 55441
(612) 546-0432

DATE	DESCRIPTION	DESIGNED	TAW
		CHECKED	TAW
		DRAWN	SRS
		GRAPHIC SCALE	
		0	HORIZ. 2
		0	VERT. 2

CITY OF ELK RIVER
WASTEWATER TREATMENT FACILITIES
CONTROL BUILDING MECHANICAL PLAN

M5

DATE OCT 1995 SHEET M5 OF M11 SHEETS PROJECT NO. 230-151