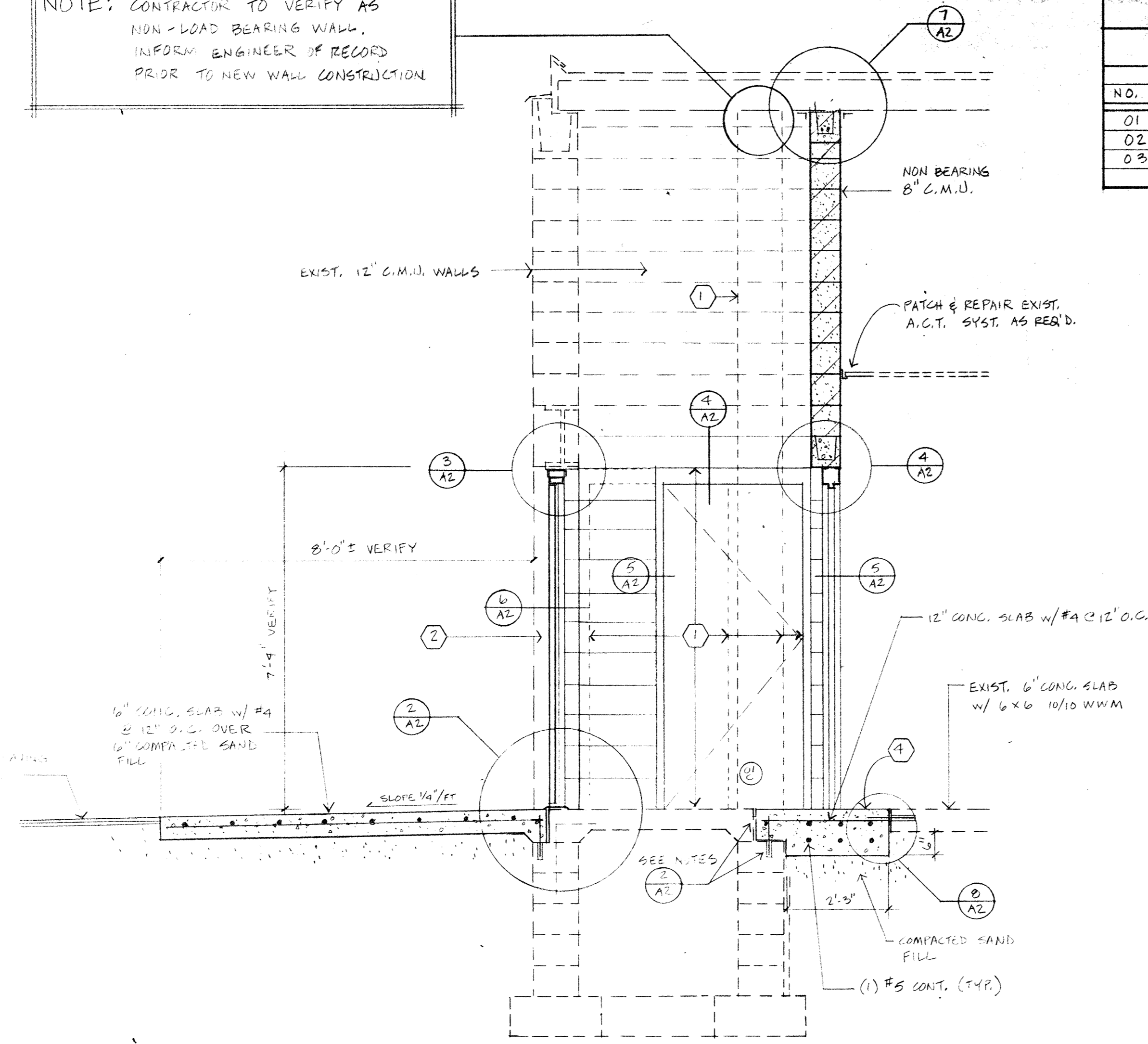
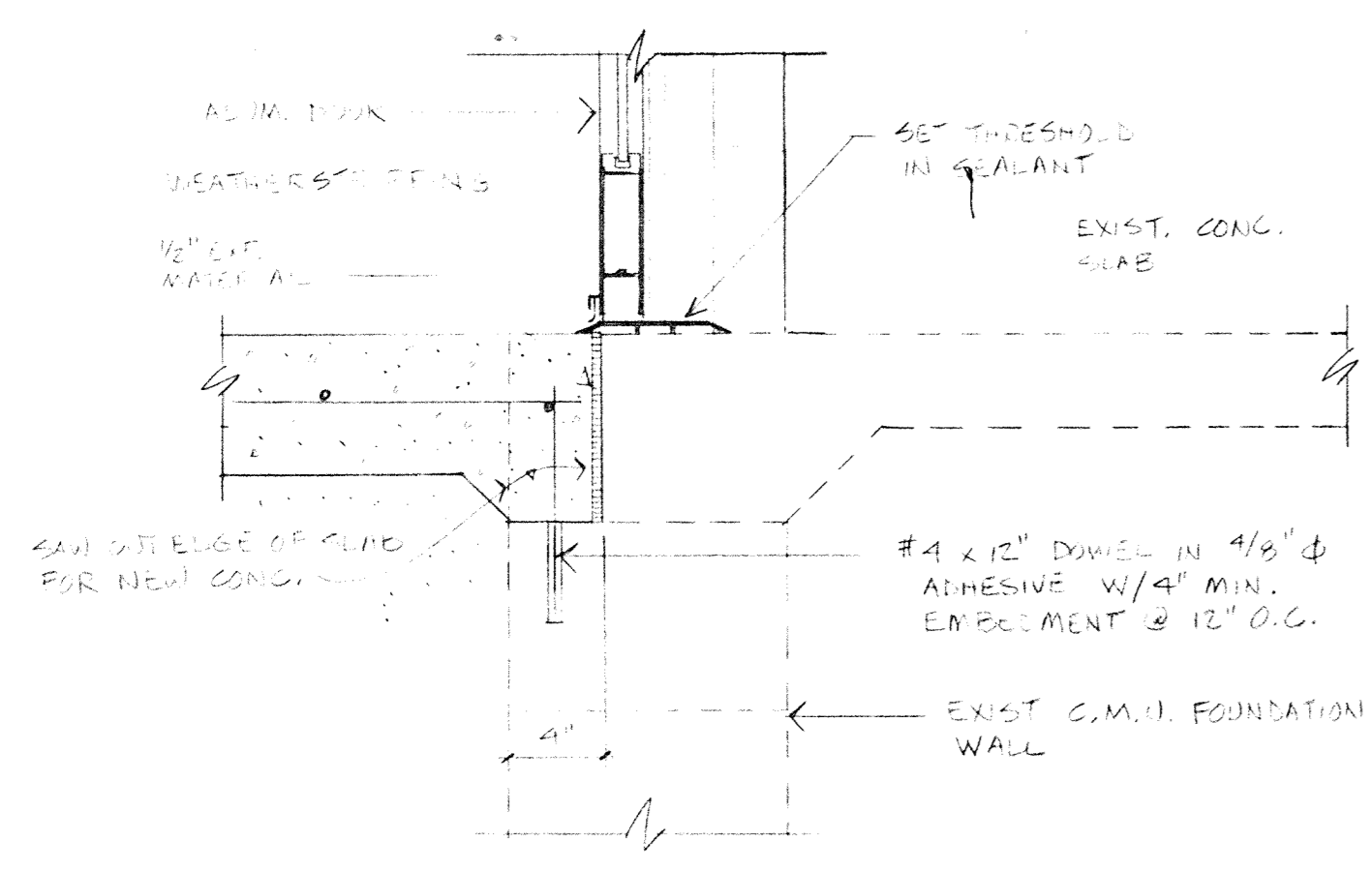


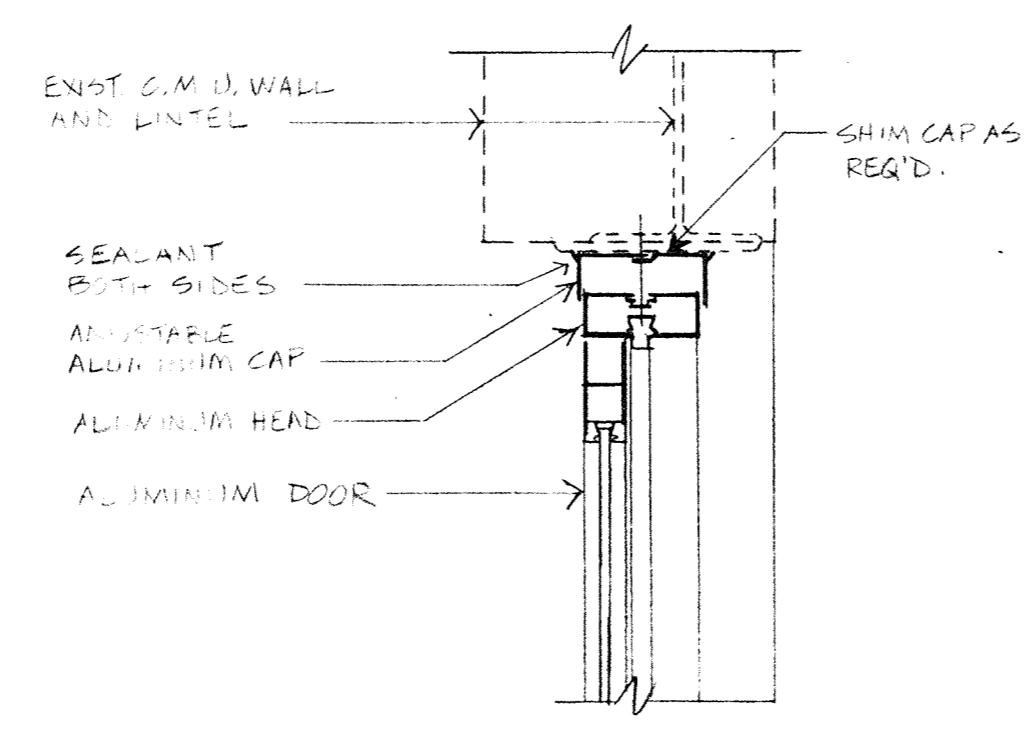
NOTE: CONTRACTOR TO VERIFY AS NON-LOAD BEARING WALL. INFORM ENGINEER OF RECORD PRIOR TO NEW WALL CONSTRUCTION



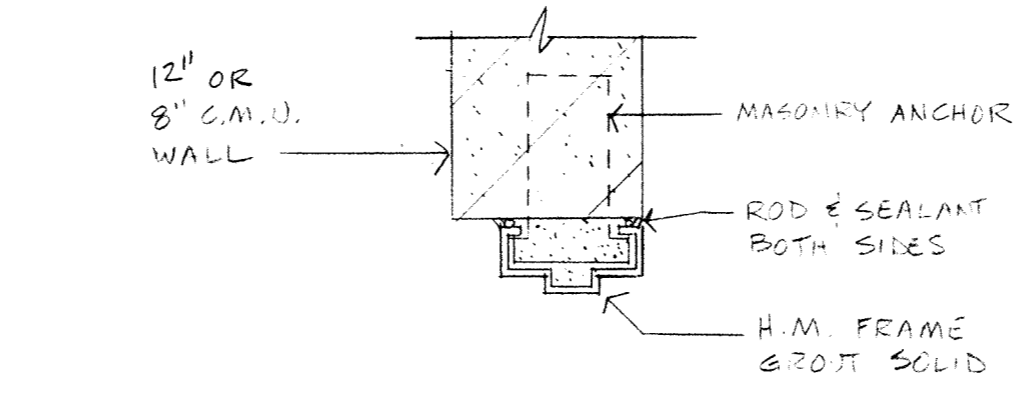
1 SECTION THROUGH STAIR AND VESTIBULE - RM. 01
1/2" = 1'-0"



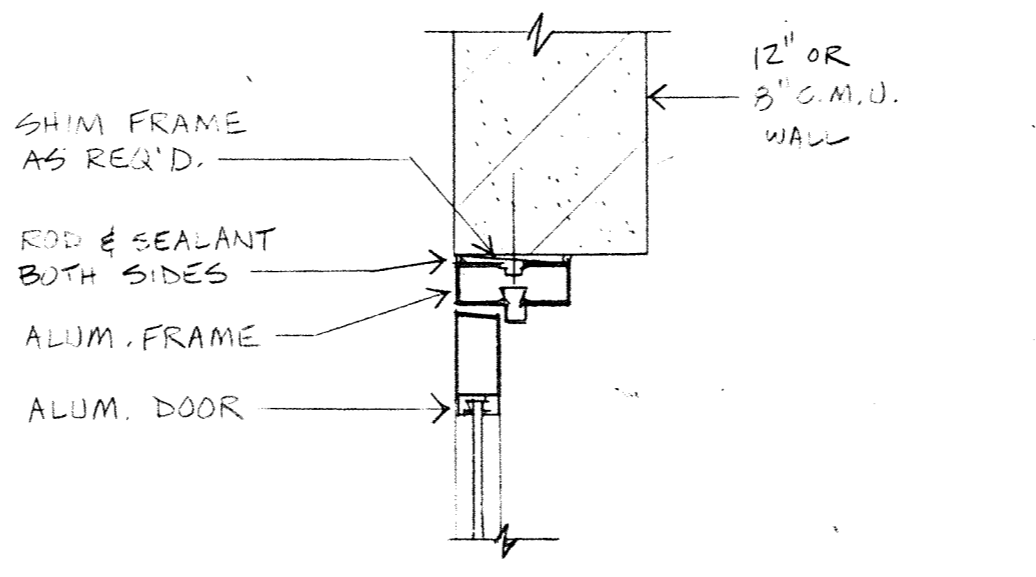
2 DETAIL - SILL @ ALUM. DOOR
1/2" = 1'-0"



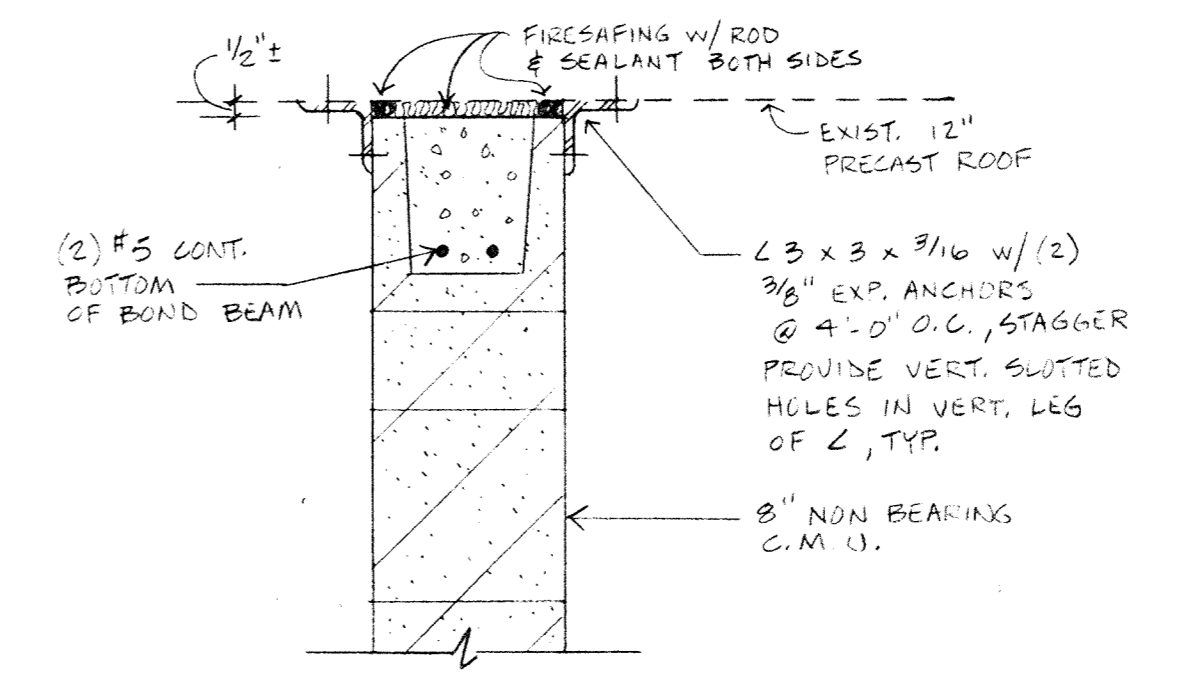
3 DETAIL - HEAD @ ALUM. DOOR
1/2" = 1'-0"



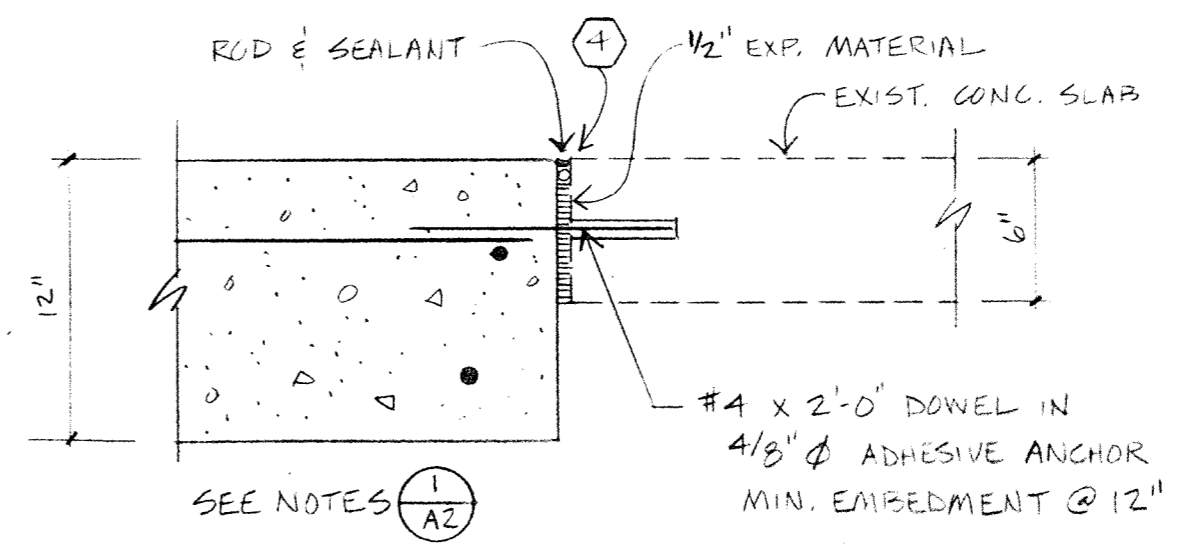
5 DETAIL - JAMB @ H.M. DOOR
1/2" = 1'-0"



6 DETAIL - JAMB @ ALUM. DOOR
1/2" = 1'-0"



7 DETAIL - TOP OF WALL BOND BEAM
1/2" = 1'-0"



8 DETAIL - CONC. FLOOR/FOOTING
1/2" = 1'-0"

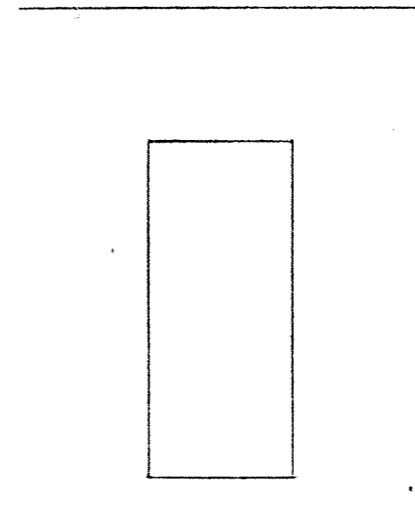
ROOM FINISH SCHEDULE

NO.	ROOM NAME	FLOOR		BASE	WALLS		CEILING			NOTES	ROOM NO.
		CONST.	FINISH		CONST.	FINISH	CONST.	FINISH	HEIGHT		
01	VESTIBULE	EXIST./NEW CONC.	PAINT P-7, F-5	-	C.M.U.	PAINT P-2, F-1	PRECAST CONC.	PAINT P-2, F-1	15'-0"		01
02	ELECTRICAL ROOM	EXIST./NEW CONC.	PAINT P-7, F-5	-	C.M.U.	PAINT P-2, F-1	ACT. SYST.	EXIST.	9'-4"		02
03	GARAGE	NEW CONCRETE	SEAL	-	-	-	-	-	-	SEAL - NEW CONCRETE	03

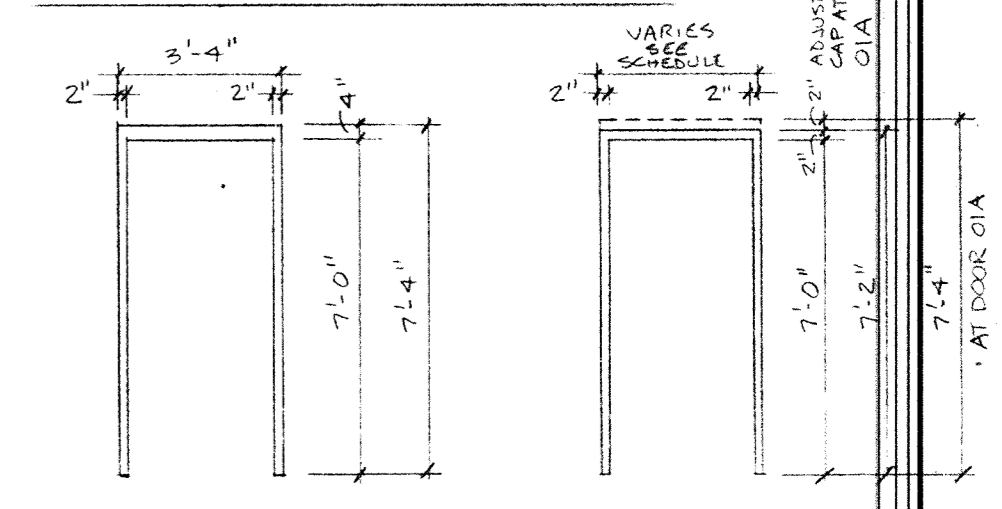
OPENING SCHEDULE

DOOR NO.	DOOR LOCATION	DOORS						FRAMES			MISC.			NOTES	HWK. GROUP	DOOR NO.		
		LEAFS	WIDTH	HEIGHT	THICKNESS	MAT'L	TYPE	FINISH	MAT'L	TYPE	FINISH	ROUGH OPENING	PRO-TECTION				GLASS TYPE	
01A	VESTIBULE	1	3'-0"	7'-0"	1 3/4"	ALUM.	2	CLEAR	ALUM.	B	CLEAR			GLT-A		SEE SPEC. SECT. 08111	A-1	01A
01B	VESTIBULE	1	3'-0"	7'-0"	1 3/4"	H.M.	1	P-3, F-2	H.M.	A	P-3, F-2						A-1	01B
01C	VESTIBULE	1	3'-0"	7'-0"	1 3/4"	H.M.	1	P-3, F-2	H.M.	A	P-3, F-2						A-1	01C
02	ELECTRICAL ROOM	1	3'-0"	7'-0"	1 3/4"	H.M.	1	P-3, F-2	H.M.	A	P-3, F-2						A-1	02
03	TRICKLING FILTER	1	2'-0"	7'-0"	1 3/4"	ALUM.	1	CLEAR	ALUM.	B	CLEAR					SEE SPEC. SECT. 08111	A-1	03
04	T.F. PUMP STATION	1	3'-0"	7'-0"	1 3/4"	ALUM.	1	CLEAR	ALUM.	B	CLEAR					SEE SPEC. SECT. 08111	A-1	04
05	T.F. PUMP STATION	1	3'-0"	7'-0"	1 3/4"	ALUM.	1	CLEAR	ALUM.	B	CLEAR					SEE SPEC. SECT. 08111	A-1	05

DOOR TYPES



FRAME TYPES



STRUCTURAL INFORMATION PROVIDED BY MSA

I HEREBY CERTIFY THAT THIS PLAN, SPECIFICATION, OR REPORT WAS PREPARED BY ME OR UNDER MY DIRECT SUPERVISION AND THAT I AM A DULY REGISTERED PROFESSIONAL ENGINEER UNDER THE LAWS OF THE STATE OF MINNESOTA.
Wendy C. Chell
DATE 3/27/94 REG. NO. 22222

This drawing was prepared by:
BORDON HENNEMUTH ARCHITECTS, LTD.
7300 France Avenue South, Suite 202
Minneapolis, Minnesota 55435
Telephone: (612) 832-5882
Fax: (612) 831-2179

I HEREBY CERTIFY THAT THIS PLAN, SPECIFICATION, OR REPORT WAS PREPARED BY ME OR UNDER MY DIRECT SUPERVISION AND THAT I AM A DULY REGISTERED ARCHITECT UNDER THE LAWS OF THE STATE OF MINNESOTA.
Bryan J. Bordon
DATE 12/17/93 REG. NO. 11950



1326 ENERGY PARK DRIVE
ST. PAUL, MINNESOTA 55108
(612) 644-4389

9800 SHELARD PARKWAY
MINNEAPOLIS, MINNESOTA 55441
(612) 548-0432

DATE	DESCRIPTION	DESIGNED	CHECKED	DRAWN
		61B	61B	61B

GRAPHIC SCALE
0 HORIZ.
0 VERT.

CITY OF ELK RIVER
WASTEWATER TREATMENT FACILITIES
EXISTING MAIN BUILDING MODIFICATIONS
DATE 12/17/93 SHEET 6 OF 41 SHEETS PROJECT NO. 230-151

A2