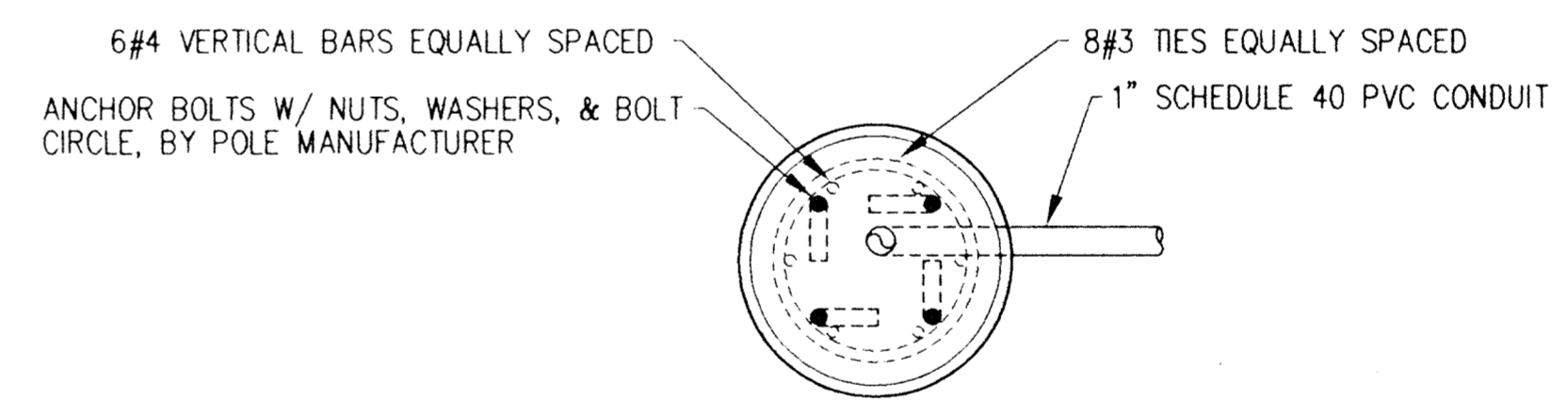
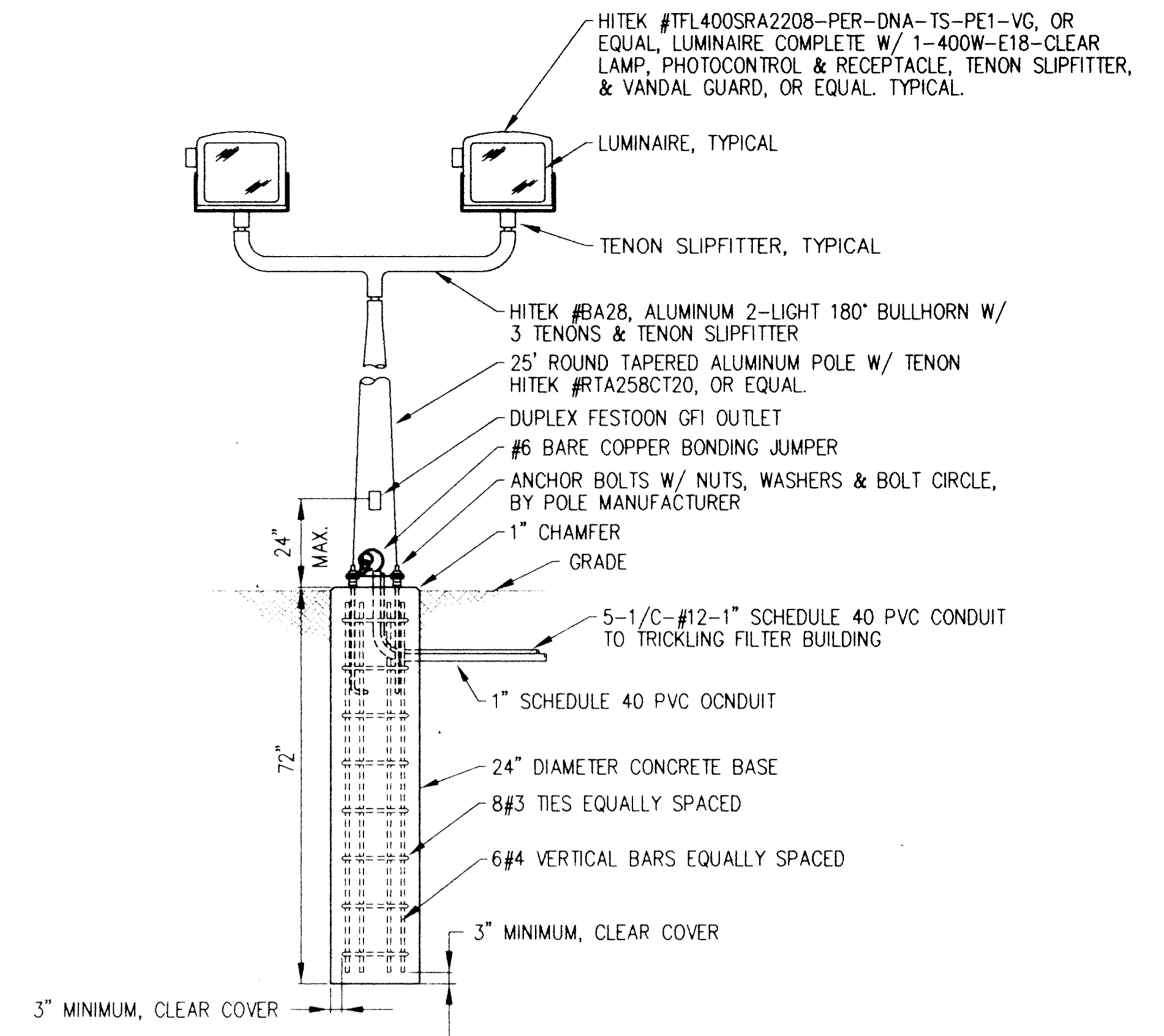
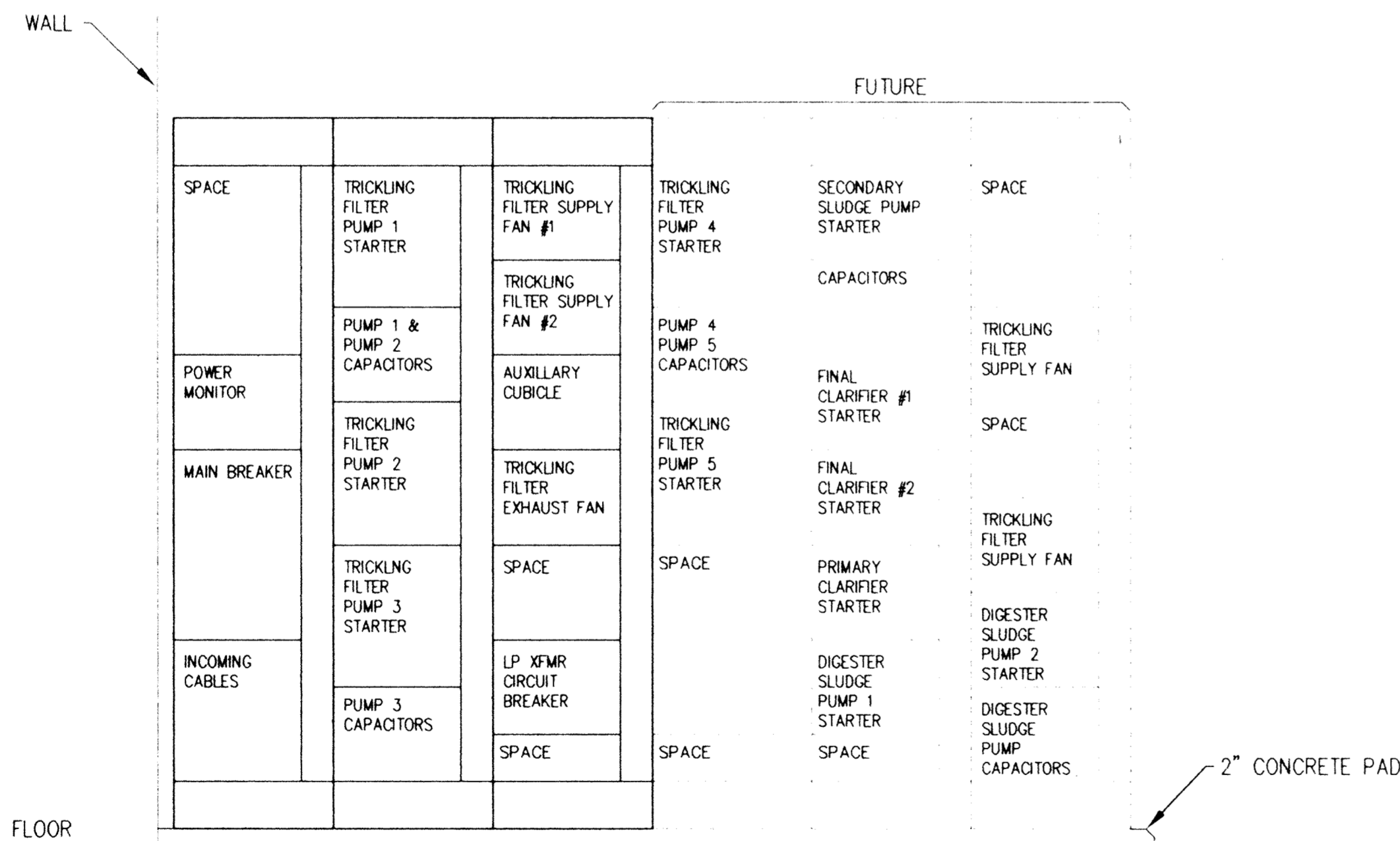


TRICKLING FILTER LIGHTING PANEL, TFLP										
MOUNTING	LOCATION	SERVICE				REMARKS				
		AMPS	VOLTS	PHASE	WIRE					
SURFACE	TRICKLING FILTER PUMP STATION, 1st LVL	200	120/208	3	4	100AMP MAIN BREAKER				
CIRCUIT DESCRIPTION	BKR	CKT	ANTICIPATED LOAD IN VA	PHASE			ANTICIPATED LOAD IN VA	CKT	BKR	CIRCUIT DESCRIPTION
				A	B	C				
CONTROL PANEL	20A1P	1	800				1500	2	20A1P	AIR COMPRESSOR OUTLET
LIGHTS	20A1P	3	900				1000	4	20A1P	SUMP PUMP
OUTLETS, EXTERIOR LIGHTS	20A1P	5	800					6	20A1P	TRICKLING FILTER LIGHTS
UNIT HEATER	15A1P	7	300				200	8	20A1P	TRICKLING FILTER CONVENIENCE OUTLETS
SPARE	20A1P	9	----				400	10	20A	SITE LIGHTING
	20A1P	11	----				400	12	2P	"
SPACE	20A1P	13	----				200	14	20A1P	SITE LIGHTING CONVENIENCE OUTLETS
	20A1P	15	----				500	16	20A	AIR COMPRESSOR
SPACE	----	17	----				500	18	2P	"
	----	19	----				----	20	20A1P	SPARE
		21	----				----	22	----	SPACE
		23	----				----	24	----	
		25	----				----	26	----	
		27	----				----	28	----	
		29	----				----	30	----	
		31	----				----	32	----	
		33	----				----	34	----	
		35	----				----	36	----	
		37	----				----	38	----	
		39	----				----	40	----	
		41	----				----	42	----	



**SITE LIGHT FIXTURE MOUNTING DETAIL**  
NO SCALE

- CONCRETE BASE NOTES**
1. CONCRETE SHALL HAVE 6% AIR ENTRAINMENT & A 28 DAY STRENGTH OF 4000 PSI
  2. REINFORCING STEEL SHALL BE ASTM A615, GRADE 60, NEW BILLET, INTERMEDIATE GRADE, DEFORMED W/ 60000 PSI YIELD STRENGTH.



**TRICKLING FILTER PUMP STATION MCC ELEVATION**  
SCALE: 3/4" = 1'-0" SUGGESTED

This drawing was prepared by:  
**Kaeding & Associates, Inc.**  
7300 France Avenue South  
Suite 330  
Minneapolis, MN 55435  
Telephone: (612) 831-0317  
Fax: (612) 831-2179

I HEREBY CERTIFY THAT THIS PLAN, SPECIFICATION, OR REPORT WAS PREPARED BY ME OR UNDER MY DIRECT SUPERVISION AND THAT I AM A DULY REGISTERED PROFESSIONAL ENGINEER UNDER THE LAWS OF THE STATE OF MINNESOTA.  
*[Signature]*  
DATE: 11/1/94 REG. NO. 9955



1326 ENERGY PARK DRIVE  
ST. PAUL, MINNESOTA 55108  
(612) 644-4389  
  
9800 SHELARD PARKWAY  
MINNEAPOLIS, MINNESOTA 55441  
(612) 546-0432

REVISIONS	DATE	DESCRIPTION	DESIGNED PFK	CHECKED PFK	DRAWN DTB

GRAPHIC SCALE  
0 HORIZ.  
0 VERT.

**CITY OF ELK RIVER**  
WASTEWATER TREATMENT FACILITIES  
MCC ELEVATION & DETAILS

**E11**