

SECTION

**TRANSFORMER PAD DETAIL**

SCALE: 3/4"=APPROXIMATELY 1'-0"

**TRANSFORMER PAD NOTES**

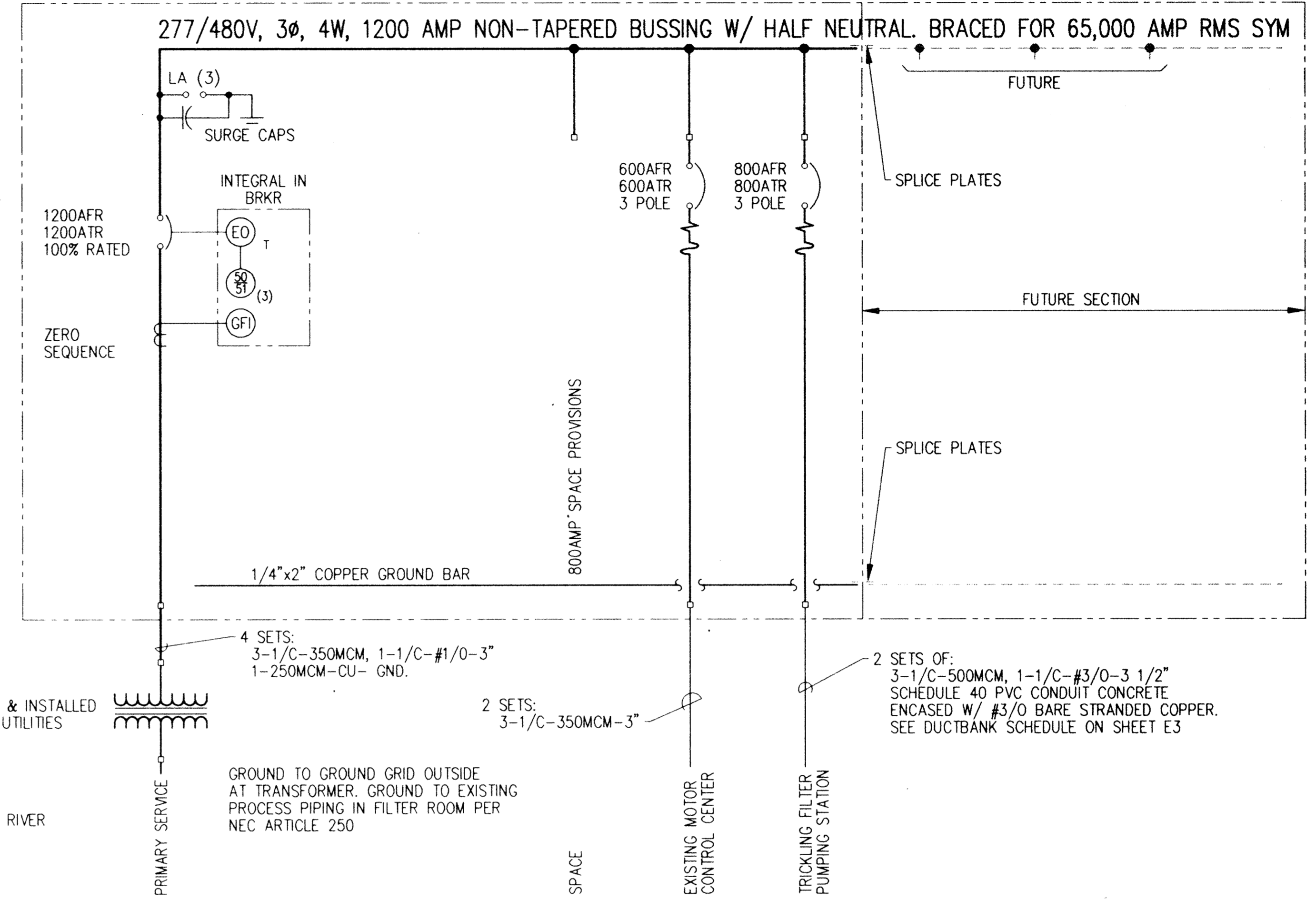
1. CONFIRM DIMENSIONS W/ OWNER PRIOR TO CONSTRUCTION
2. CONCRETE SHALL HAVE A 28-DAY STRENGTH OF 4000PSI W/ 4-6% AIR ENTRAINMENT & 3/4" (MAXIMUM) AGGREGATE SIZE
3. REINFORCING STEEL SHALL BE ASTM-A615, GRADE 60, EQUALLY SPACED AS SHOWN EACH WAY
4. MINIMUM CONCRETE COVER OVER REINFORCING STEEL SHALL BE 2", UNLESS NOTED OTHERWISE
5. FINISH TO BE A WOOD FLOAT CONCRETE FINISH W/ NO DEPRESSIONS

NOTE: SWITCHGEAR SHALL BE LABELED AS SUITABLE FOR SERVICE ENTRANCE EQUIPMENT

TRANSFORMER FURNISHED & INSTALLED BY ELK RIVER MUNICIPAL UTILITIES

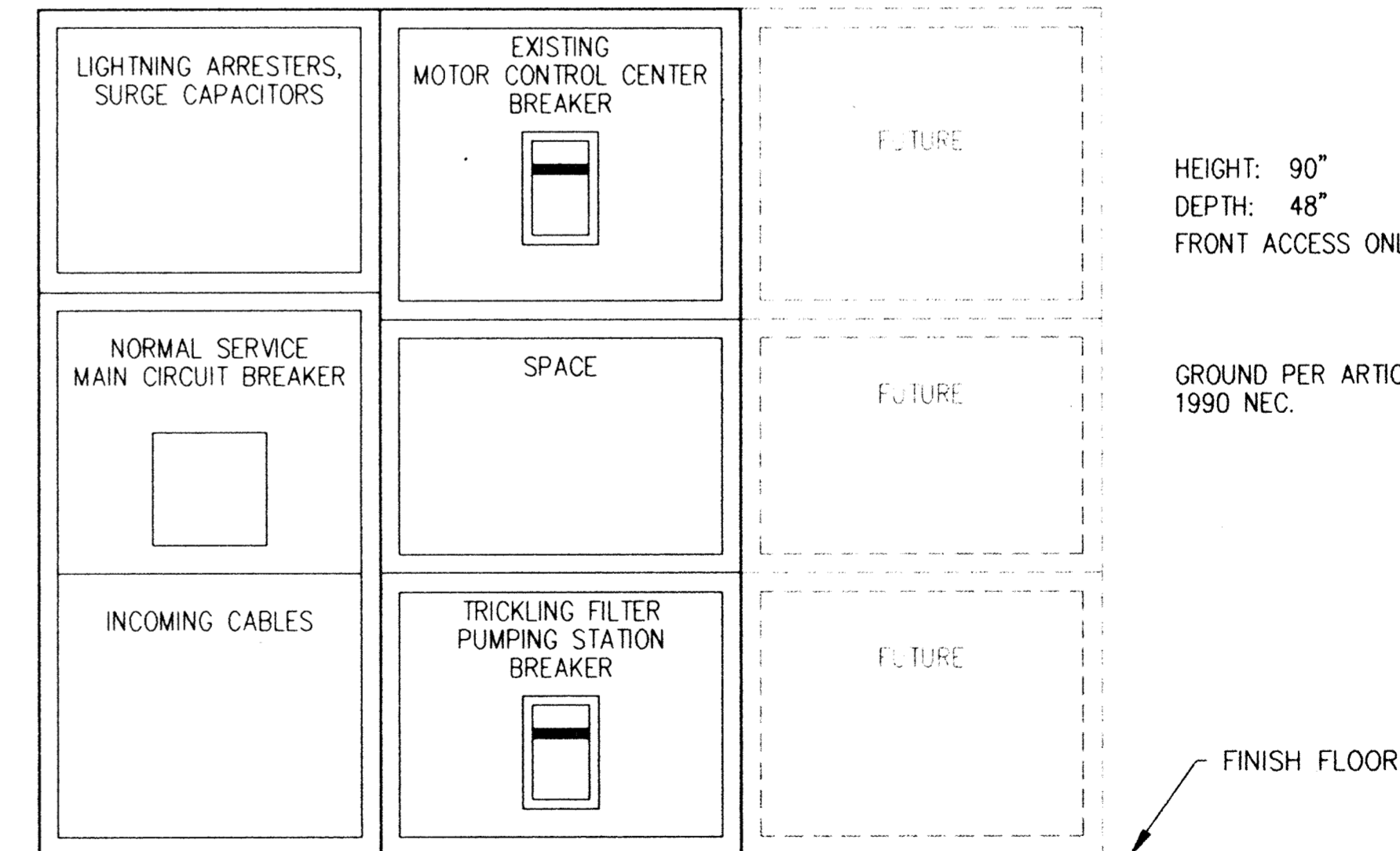
PRIMARY SERVICE BY ELK RIVER MUNICIPAL UTILITIES

UTILITY METERING IS IN TRANSFORMER SECONDARY COMPARTMENT



**480V SWITCHGEAR ONE-LINE DIAGRAM**

NO SCALE



**480V SWITCHGEAR ELEVATION**

SCALE: 3/4"=1'-0"

This drawing was prepared by:  
Kauding & Associates, Inc.  
7300 France Avenue South  
Suite 330  
Minneapolis, MN 55435  
Telephone: (612) 831-0317  
Fax: (612) 831-2779

I HEREBY CERTIFY THAT THIS PLAN, SPECIFICATION, OR REPORT WAS PREPARED BY ME OR UNDER MY DIRECT SUPERVISION AND THAT I AM A DULY REGISTERED PROFESSIONAL ENGINEER UNDER THE LAWS OF THE STATE OF MINNESOTA.  
*[Signature]*  
DATE: 10/24/99 REG. NO. 9955



1326 ENERGY PARK DRIVE  
ST. PAUL, MINNESOTA 55108  
(612) 644-4389  
  
9800 SHELARD PARKWAY  
MINNEAPOLIS, MINNESOTA 55441  
(612) 546-0432

REVISIONS	DATE	DESCRIPTION	DESIGNED PFK	CHECKED PFK	DRAWN DTB

CITY OF ELK RIVER  
WASTEWATER TREATMENT FACILITIES  
ELECTRICAL SCHEMATIC & DETAILS

**E7**