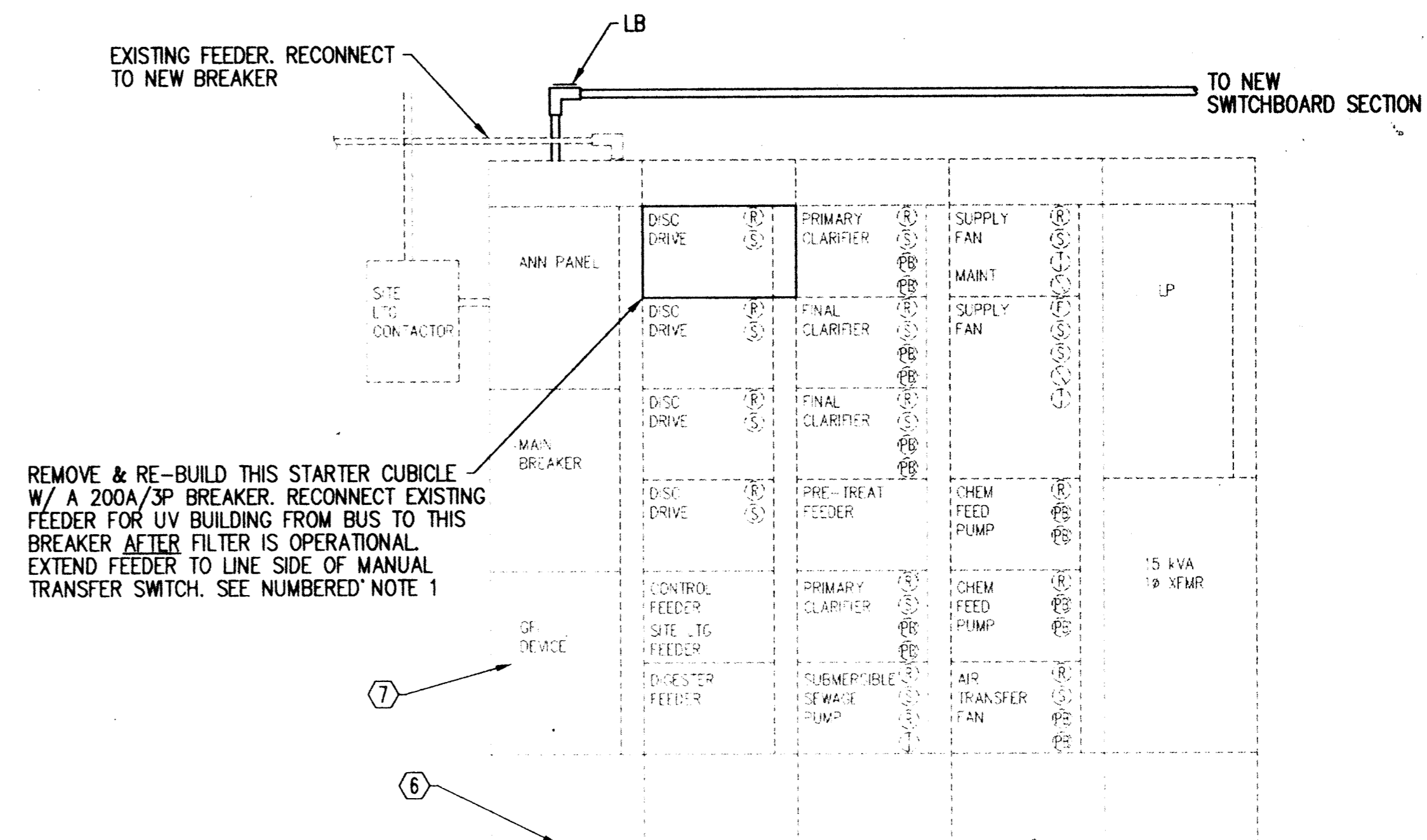
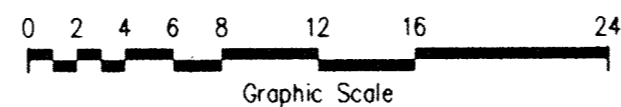


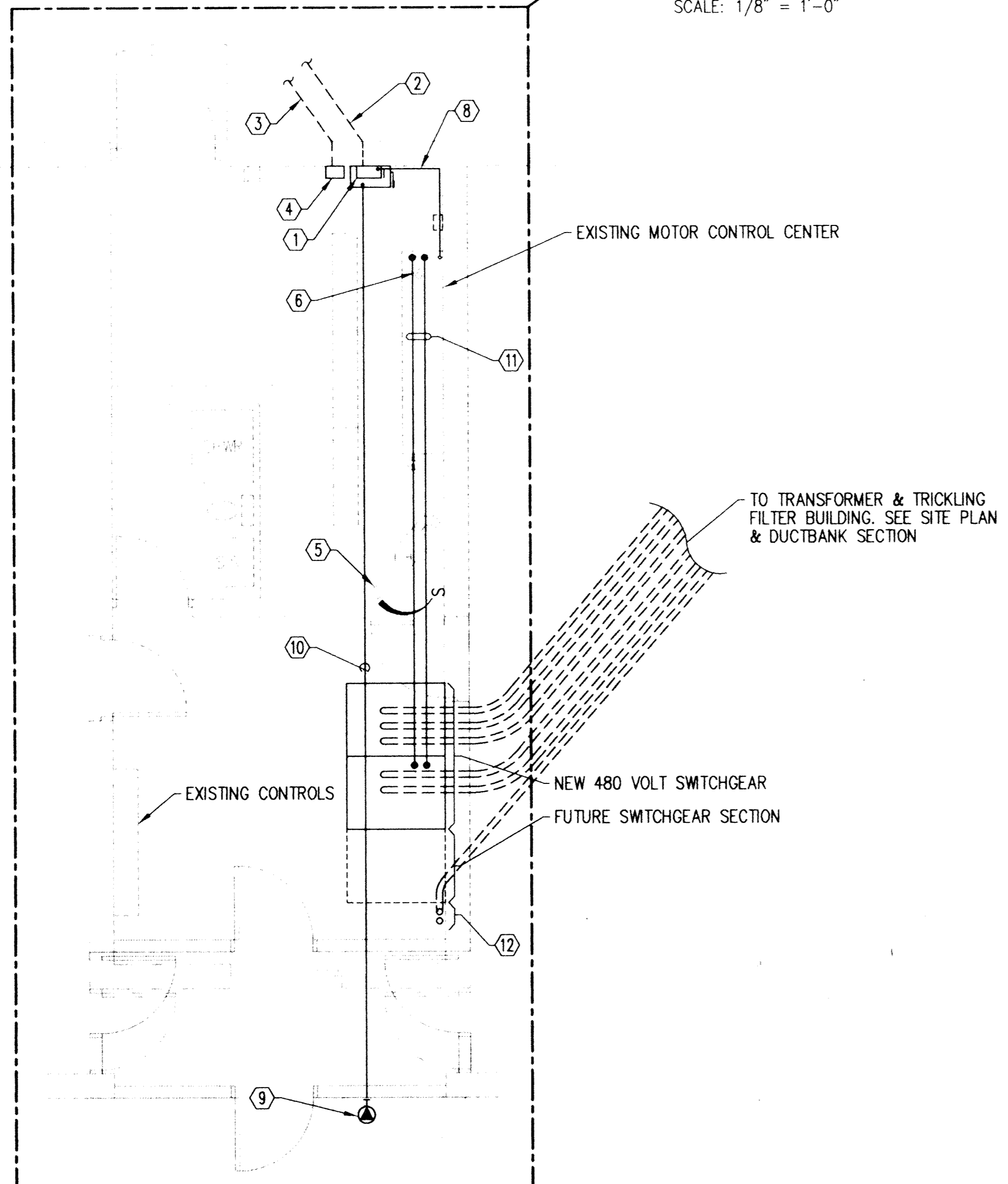
ELECTRICAL MODIFICATION PLAN TO EXISTING RBC BUILDING

SCALE: 1/8" = 1'-0"



EXISTING MOTOR CONTROL CENTER ELEVATION

SCALE: 3/4" = 1'-0"

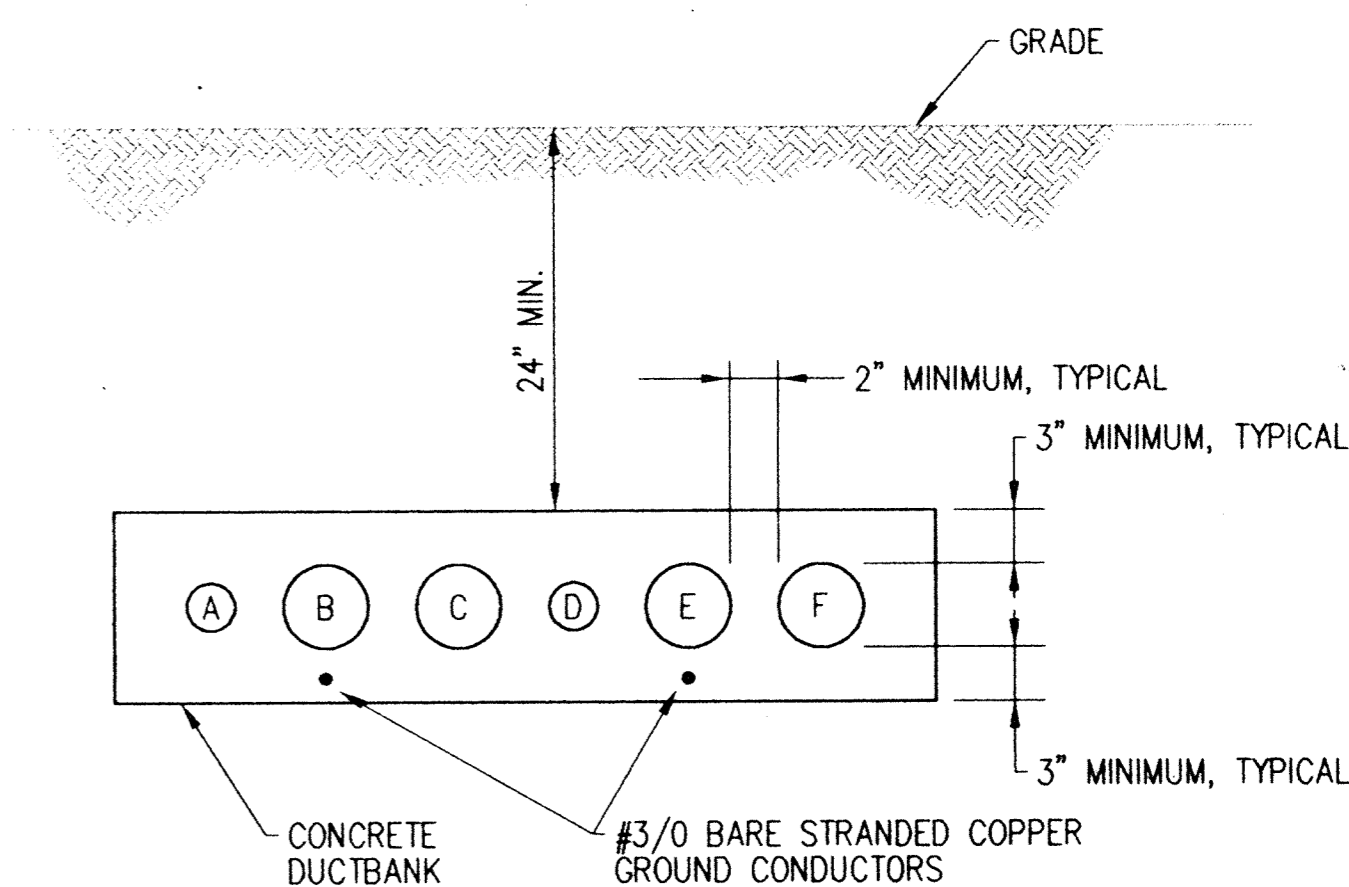


ENLARGED PLAN

SCALE: 1/4" = 1'-0"

NUMBERED NOTES

- ① EXISTING 480VOLT, 3P, 200AMP, NEMA 1 CIRCUIT BREAKER CONNECTED TO LOAD SIDE OF GROUND MONITORING EQUIPMENT IN MCC. REMOVE. INSTALL 480VOLT, 3P, 200AMP, HEAVY DUTY MANUAL TRANSFER SWITCH. RECONNECT UV DISINFECTION FEEDER TO LOAD TERMINALS IN TRANSFER SWITCH. CONNECT TRANSFER SWITCH LINE TERMINALS TO MCC. CONNECT TRANSFER SWITCH STANDBY TERMINALS TO GENERATOR RECEPTACLE
- ② EXISTING 4-1/C-#3/0, 1-1/C-#2 BARE COPPER GROUND, 2" SCHEDULE 80 PVC TO UV DISINFECTION BUILDING. RECONNECT TO TRANSFER SWITCH
- ③ EXISTING 2" GALVANIZED RIGID STEEL CONDUIT W/ PULL-WIRE TO UV BUILDING FOR FUTURE USE. TO BE RETAINED
- ④ EXISTING 8"x8"x8" NEMA 1 GALVANIZED JUNCTION BOX AT 18" A.F.F.
- ⑤ EXISTING LIGHT SWITCH. RELOCATE & RECONNECT
- ⑥ DISCONNECT EXISTING SERVICE CONDUCTORS. REMOVE. GROUT EXISTING SERVICE CONDUITS CLOSED
- ⑦ REMOVE EXISTING GFI DEVICE. INSTALL NEW DOOR
- ⑧ EXISTING FEEDER. RECONNECT TO NEW TRANSFER SWITCH LINE TERMINAL & BREAKER IN MCC. SEE MCC ELEVATION ON THIS SHEET
- ⑨ GENERATOR RECEPTACLE. CROUSE-HINDS #AREX402212-S22. CONFIRM W/ OWNER.
- ⑩ 3-1/C-#500MCM, 1-1/C-#3/0-3"
- ⑪ 2 SETS OF 3-1/C-350MCM-3". NEW FEEDER TO SERVE EXISTING MOTOR CONTROL CENTER
- ⑫ TWO 2" CONDUITS IN DUCTBANK. STUB UP IN THIS SPACE. STUB 12" ABOVE FLOOR. INSTALL PULL-WIRE



CONDUIT	MATERIAL	SIZE	FROM	TO	REMARKS
A	GALVANIZED RIGID STEEL	2"	SWITCHGEAR RM.	ELEC. JUNCTION BOX	FUTURE USE. INCLUDE PULL-WIRE
B	SCHEDULE 40 PVC	3 1/2"	480 VOLT SWGR	ELEC. JUNCTION BOX	FUTURE USE. INCLUDE PULL-WIRE
C	SCHEDULE 40 PVC	3 1/2"	480 VOLT SWGR	ELEC. JUNCTION BOX	FUTURE USE. INCLUDE PULL-WIRE
D	GALVANIZED RIGID STEEL	2"	SWITCHGEAR RM.	TRICKLING FILTER	FUTURE USE. INCLUDE PULL-WIRE
E	SCHEDULE 40 PVC	3 1/2"	480 VOLT SWGR	TRICKLING FILTER	MCC FEEDER
F	SCHEDULE 40 PVC	3 1/2"	480 VOLT SWGR	TRICKLING FILTER	MCC FEEDER

DUCTBANK SECTION & SCHEDULE

NO SCALE

This drawing was prepared by: Kaeding & Associates, Inc. 7300 France Avenue South Suite 330 Minneapolis, MN 55435 Telephone: (612) 831-0317 Fax: (612) 831-2179	I HEREBY CERTIFY THAT THIS PLAN, SPECIFICATION, OR REPORT WAS PREPARED BY ME OR UNDER MY DIRECT SUPERVISION AND THAT I AM A FULLY REGISTERED PROFESSIONAL ENGINEER UNDER THE LAWS OF THE STATE OF MINNESOTA. DATE: <u>March 1, 1994</u> REG. NO. 9955	 1326 ENERGY PARK DRIVE ST. PAUL, MINNESOTA 55108 (612) 644-4389 9800 SHELARD PARKWAY MINNEAPOLIS, MINNESOTA 55441 (612) 546-0432	DATE _____ DESCRIPTION _____ DESIGNED PFK _____ CHECKED PFK _____ DRAWN DTB _____ GRAPHIC SCALE 0 HORIZ. _____ 0 VERT. _____	CITY OF ELK RIVER WASTEWATER TREATMENT FACILITIES EXISTING RBC BUILDING MODIFICATION PLAN	E3 DATE <u>DEC 1993</u> SHEET <u>30</u> OF <u>41</u> SHEETS PROJECT NO. <u>230-151</u>
			REVISIONS _____ _____ _____		