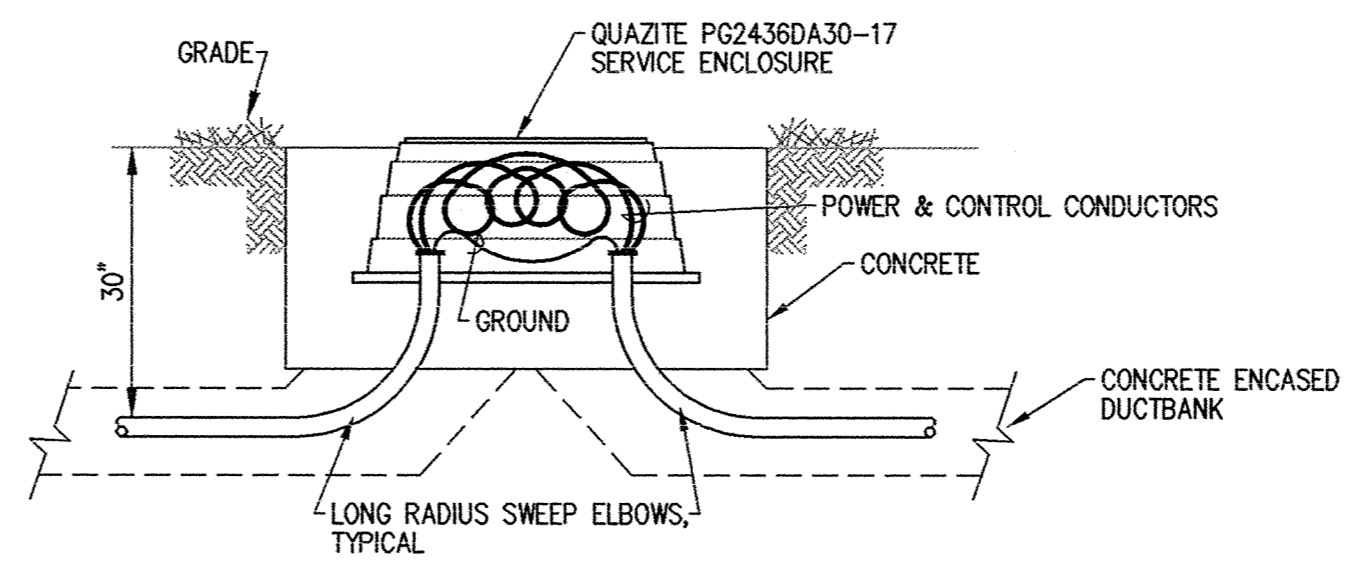
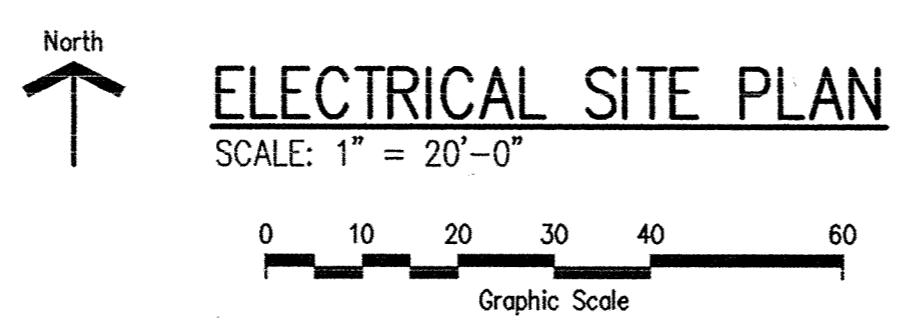


FLARE PANEL MOUNTING DETAIL
NO SCALE



PULL BOX DETAIL
NO SCALE

- NUMBERED NOTES**
- ① PULL BOX. SEE DETAIL THIS SHEET
 - ② NEW CIRCUITRY TO NEW CLARIFIERS.
 - ③ COORDINATE BRIDGE LOCATION W/ CLARIFIER MANUFACTURER
 - ④ REVISE DUCTBANK CONFIGURATION SO CONDUITS PASS IMMEDIATELY OVER EXISTING DUCTBANK, THEN CAST NEW CONDUITS INTO CONCRETE
 - ⑤ ROB-ROY FIBERGLASS FRAMING MEMBER ATTACHED TO SIDE OF TANK. MOUNT OUTLET TO FRAMING MEMBER. 2-1/C-#10 GND-1" SCHEDULE 40 PVC TO EXISTING LP IN EXISTING MCC IN MAIN BUILDING
 - ⑥ NEW CONCRETE ENCASED DUCTBANK
 - ⑦ REPLACE EXISTING CYCLE-FLEX BARSCREEN TIMER W/ NEW TIMER. SEE DETAIL, SHEET E17
 - ⑧ REPLACE & RELOCATE EXISTING UNDERGROUND FEEDERS AS REQUIRED
 - ⑨ 5-1/C-#12-1" SCHEDULE 80 PVC CONDUIT, 1-1" SCHEDULE 80 PVC CONDUIT (SPARE, WITH PULL WIRE) FROM TRICKLING FILTER PUMP STATION CONTROL PANEL TO CONTROL BUILDING. SEE SHEET E16
 - ⑩ 6-1/C-#6, 1-1/C-#8 GND-1 1/2" SCHEDULE 40 PVC CONDUIT, 6-1/C-#12, 2-1/C-#10, 1-1/C-#10 GND-1 1/2" SCHEDULE 40 PVC CONDUIT & 1" SCHEDULE 40 PVC CONDUIT (SPARE) IN CONCRETE ENCASED DUCTBANK.
 - ⑪ SEE SHEET E23 FOR WORK IN THIS BUILDING
 - ⑫ DISCONNECT SECONDARY SERVICE CONDUCTORS. EXTEND PAD 3'-0" WEST. UTILITY WILL ROTATE TRANSFORMER 90°. RECONNECT.

This drawing was prepared by:
Kaeding & Associates, Inc.
7300 France Avenue South
Suite 330
Minneapolis, MN 55435
Telephone: (612) 831-0317
Fax: (612) 831-2178

I HEREBY CERTIFY THAT THIS PLAN, SPECIFICATION, OR REPORT WAS PREPARED BY ME OR UNDER MY DIRECT SUPERVISION AND THAT I AM A DULY REGISTERED PROFESSIONAL ENGINEER UNDER THE LAWS OF THE STATE OF MINNESOTA.
[Signature]
DATE: OCT 95 REG. NO.: 9955



1326 ENERGY PARK DRIVE
ST. PAUL, MINNESOTA 55108
(612) 644-4389
5075 WAYZATA BLVD. SUITE 225
MINNEAPOLIS, MINNESOTA 55441
(612) 546-0432

DATE	DESCRIPTION	DESIGNED	PFK
		CHECKED	PFK
		DRAWN	CPM/JGB
		GRAPHIC SCALE	
		0 HORIZ.	
		0 VERT.	

CITY OF ELK RIVER
WASTEWATER TREATMENT FACILITIES
ELECTRICAL SITE PLAN

E2

DATE: OCT 1995 SHEET: 88 OF 112 SHEETS PROJECT NO.: 230-151