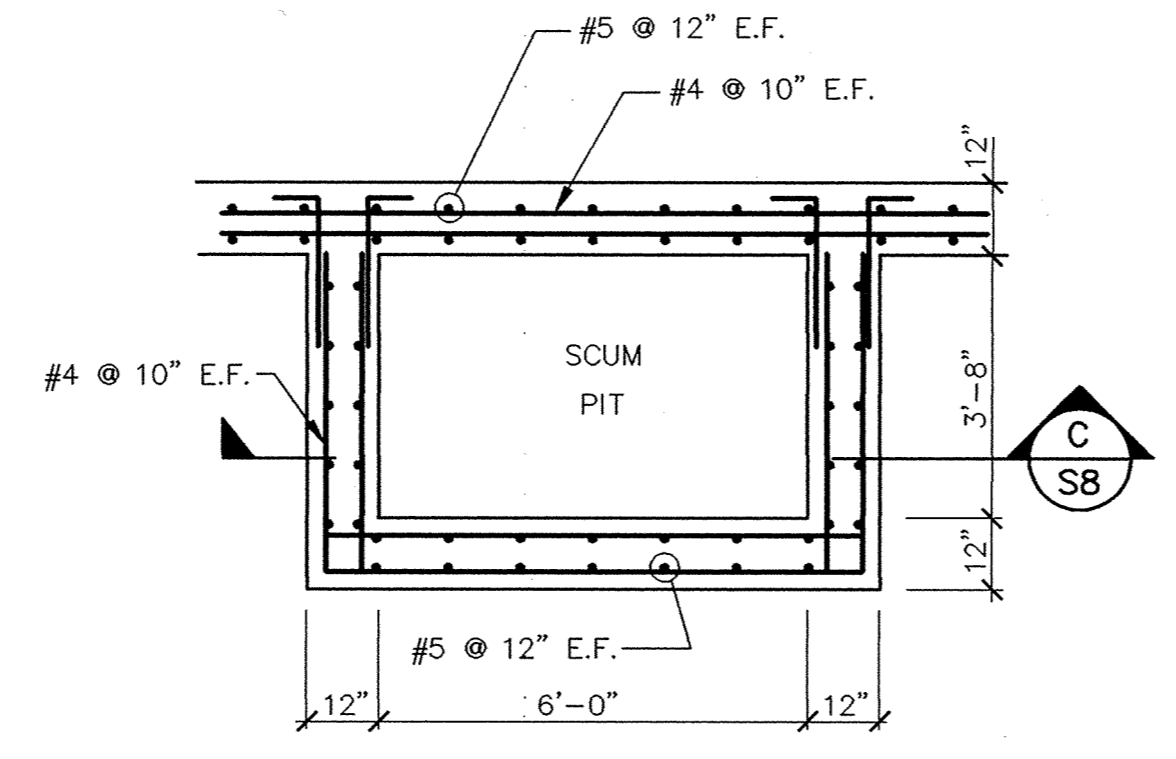


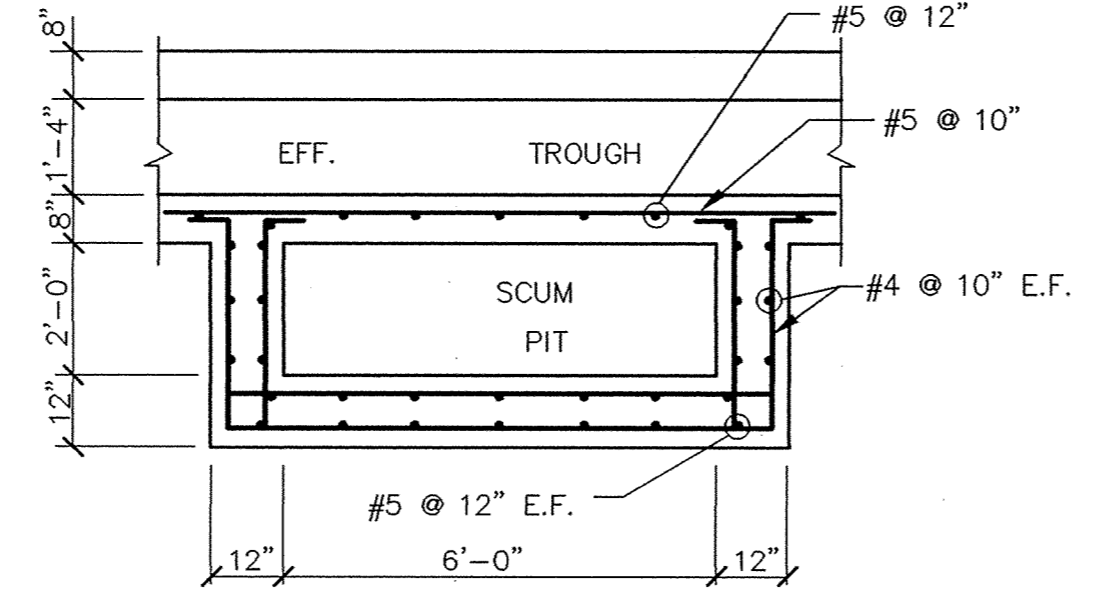
SECTION 1
Scale: 3/8" = 1'-0"
S8

2" GROUT LAYER - PLACE AFTER MECHANICAL EQUIP. IS INSTALLED SEE NOTE BELOW.

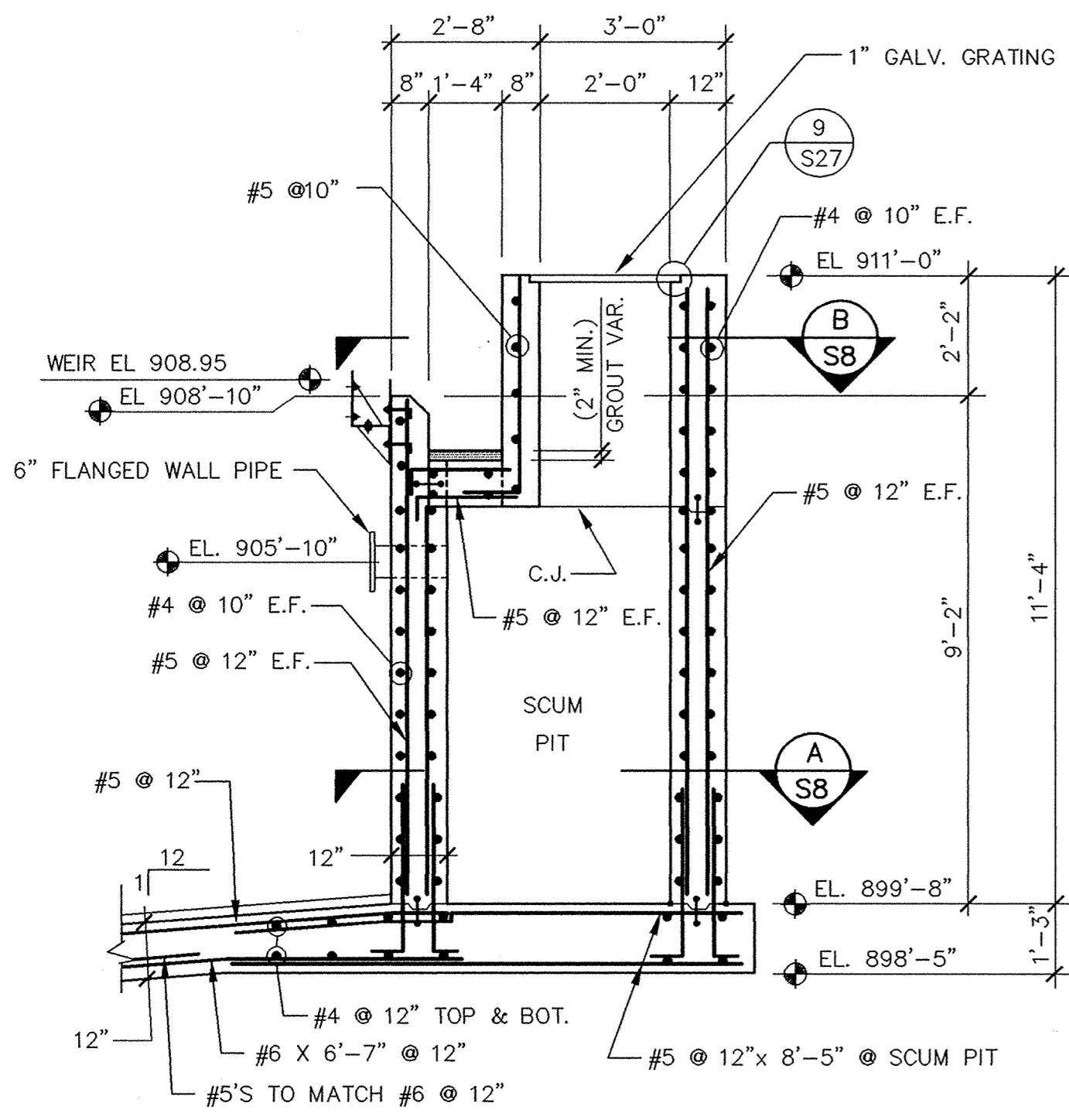
GROUT LAYER NOTE:
1. PLACE CONC. BONDING COMPOUND OVER BASE SLAB PRIOR TO GROUTING.
2. TOP OF BASE SLAB TO BE ROUGH WOOD FLOAT FINISHED AND SAND BLAST CLEANED PRIOR TO PLACING BONDING COMPOUND.



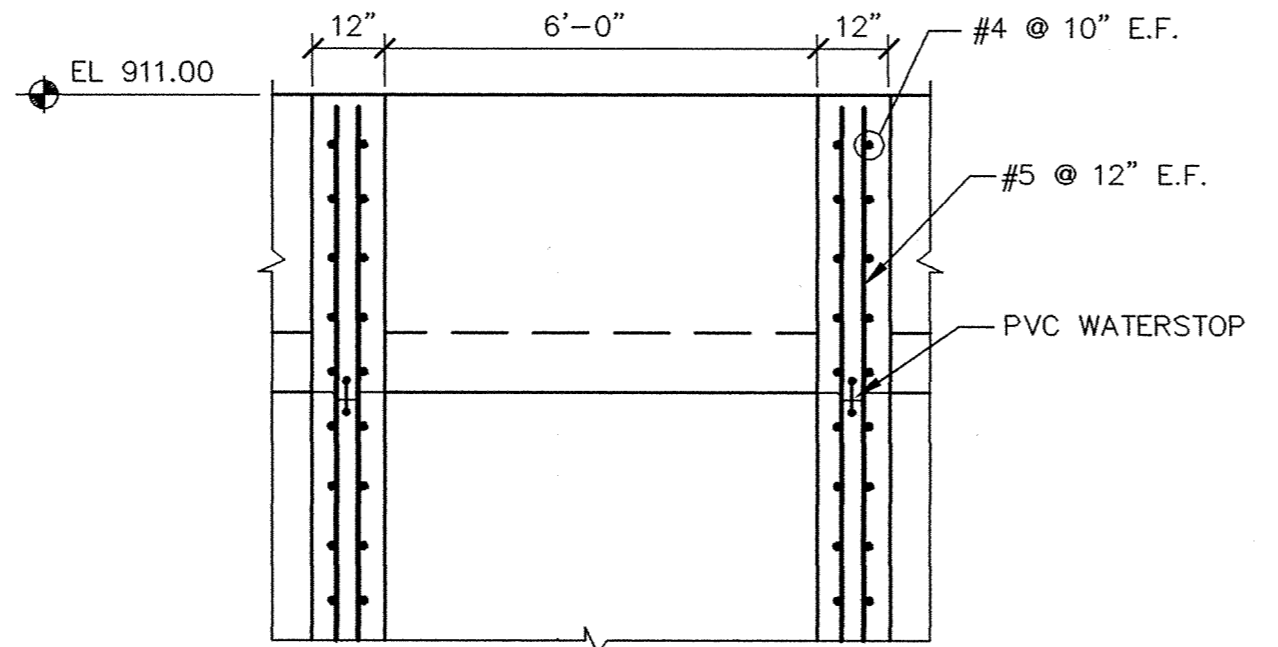
SECTION A
Scale: 3/8" = 1'-0"
S8



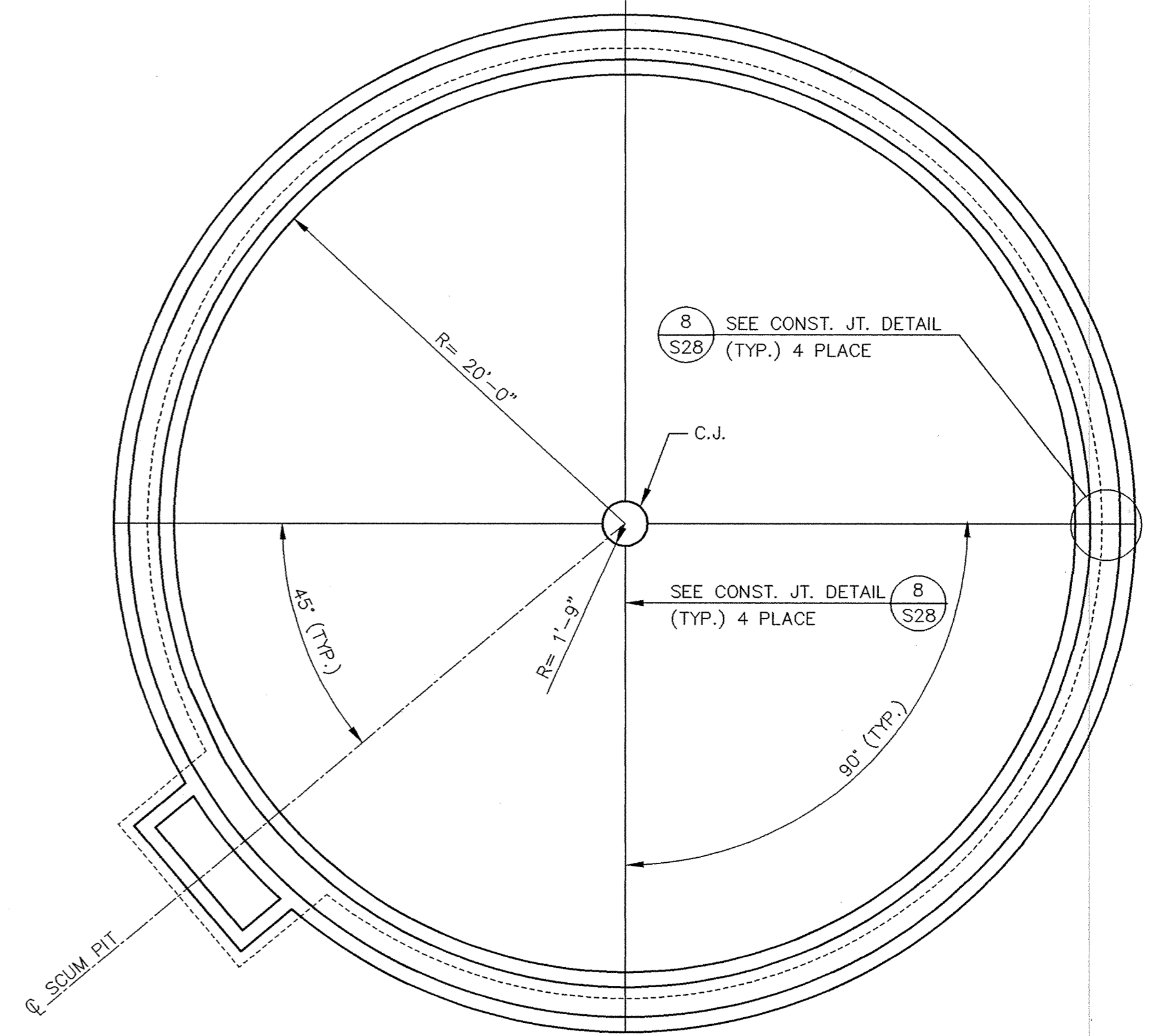
SECTION B
Scale: 3/8" = 1'-0"
S8



SECTION 2
Scale: 3/8" = 1'-0"
S8

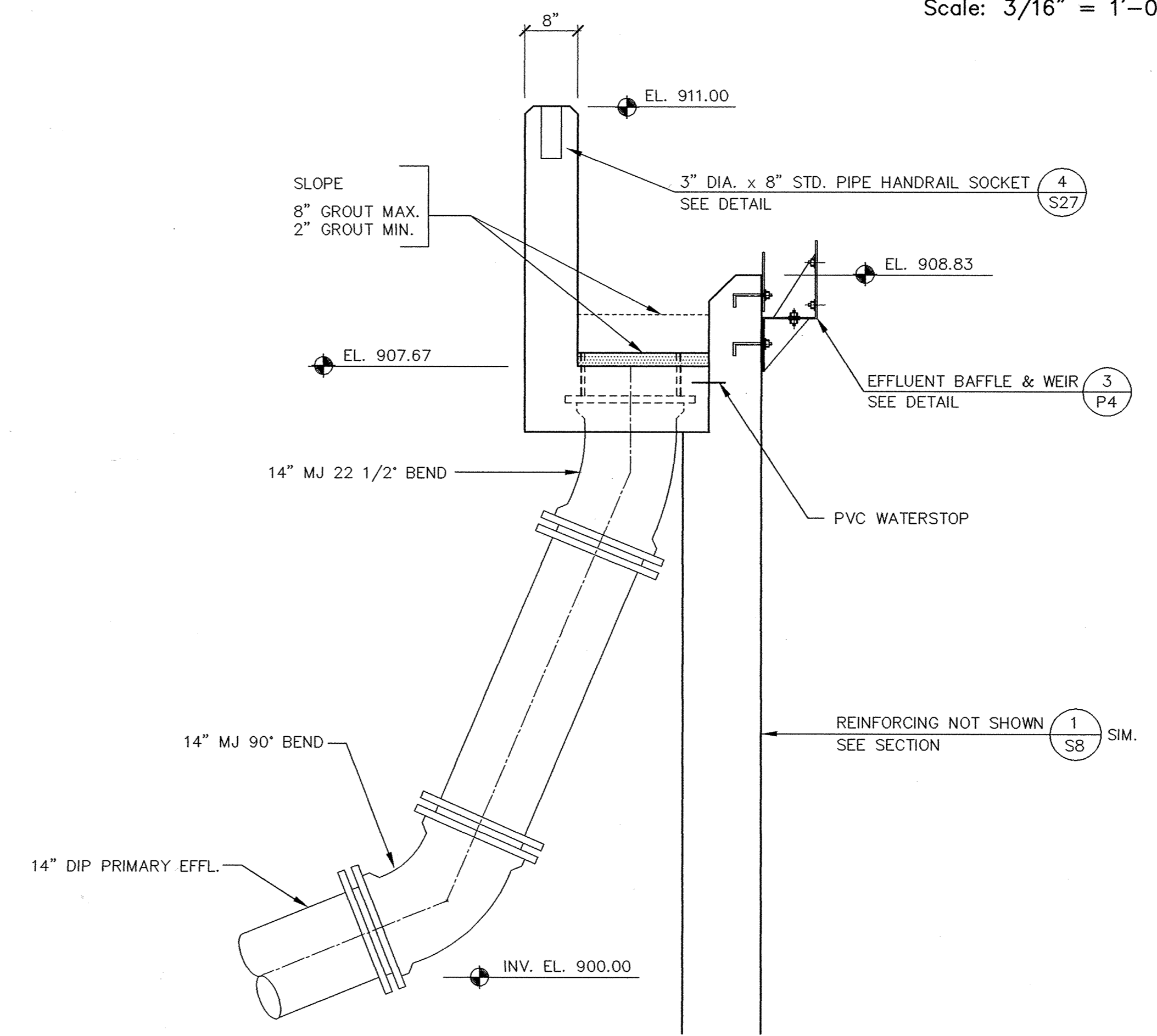


SECTION C
Scale: 3/8" = 1'-0"
S8



CONSTRUCTION JOINT - PLAN
Scale: 3/16" = 1'-0"
S8

NOTE
SLAB AND WALL PANELS SHALL BE ALLOWED TO CURE 14 DAYS BEFORE ADJACENT PANELS ARE POURED.



EFFLUENT TROUGH - DETAIL
Scale: 3/4" = 1'-0"
S8

I HEREBY CERTIFY THAT THIS PLAN, SPECIFICATION OR REPORT WAS PREPARED BY ME OR UNDER MY DIRECT SUPERVISION AND THAT I AM A DULY REGISTERED PROFESSIONAL ENGINEER UNDER THE LAWS OF THE STATE OF MINNESOTA.

David C. Caldwell
DATE: 11/17/95 REG. NO. 2222



1326 ENERGY PARK DRIVE
ST. PAUL, MINNESOTA 55108
(612) 644-4389

9800 SHELARD PARKWAY
MINNEAPOLIS, MINNESOTA 55441
(612) 546-0432

REVISIONS	DATE	DESCRIPTION	DESIGNED: DLG GG
			CHECKED: JAR GG
			DRAWN: TB GG
			GRAPHIC SCALE
			0 HORIZ. 2.67
			0 VERT. 2.67

CITY OF ELK RIVER
WASTEWATER TREATMENT FACILITY UPGRADE
PRIMARY CLARIFIER NO. 2
SECTIONS & DETAILS

S8