

SARGO PRODUCTS • NEW HOPKIN, MINNESOTA
PREPARED BY PLAN NUMBER 0252
PROPOSED COURSE OF FRONT STREET LINE

SARGO PRODUCTS • NEW HOPKIN, MINNESOTA
PREPARED BY PLAN NUMBER 0252
PROPOSED COURSE OF FRONT STREET LINE

SARGO PRODUCTS • NEW HOPKIN, MINNESOTA
PREPARED BY PLAN NUMBER 0252
PROPOSED COURSE OF FRONT STREET LINE

SARGO PRODUCTS • NEW HOPKIN, MINNESOTA
PREPARED BY PLAN NUMBER 0252
PROPOSED COURSE OF FRONT STREET LINE

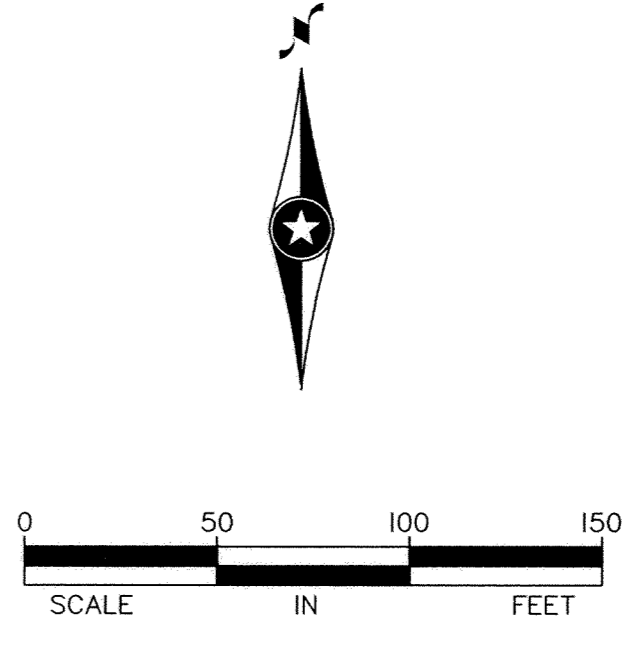
REV. NO.	DATE	DESCRIPTION

DATE:	08/10/06
DESIGN BY:	DC
DRAWN BY:	MDN
CHECKED BY:	DC, MML
DWG:	8136-17base-AB
TEXT:	NONE
FILE NO.:	8136.17-03

John Oliver & Associates, Inc.
Civil Engineering, Land Surveying, Land Planning
680 Dodge Avenue
Elk River, Minnesota 55330
763-441-2072 FAX 763-441-5665
Offices in: Elk River, Burnsville
and Brooklyn Center, Minnesota

TRACTOR STORE
ELK RIVER, MN
FOR
AMT MANAGEMENT, LLC
AS-BUILT
RECORD PLAN

SHEET NO. _____ OF _____

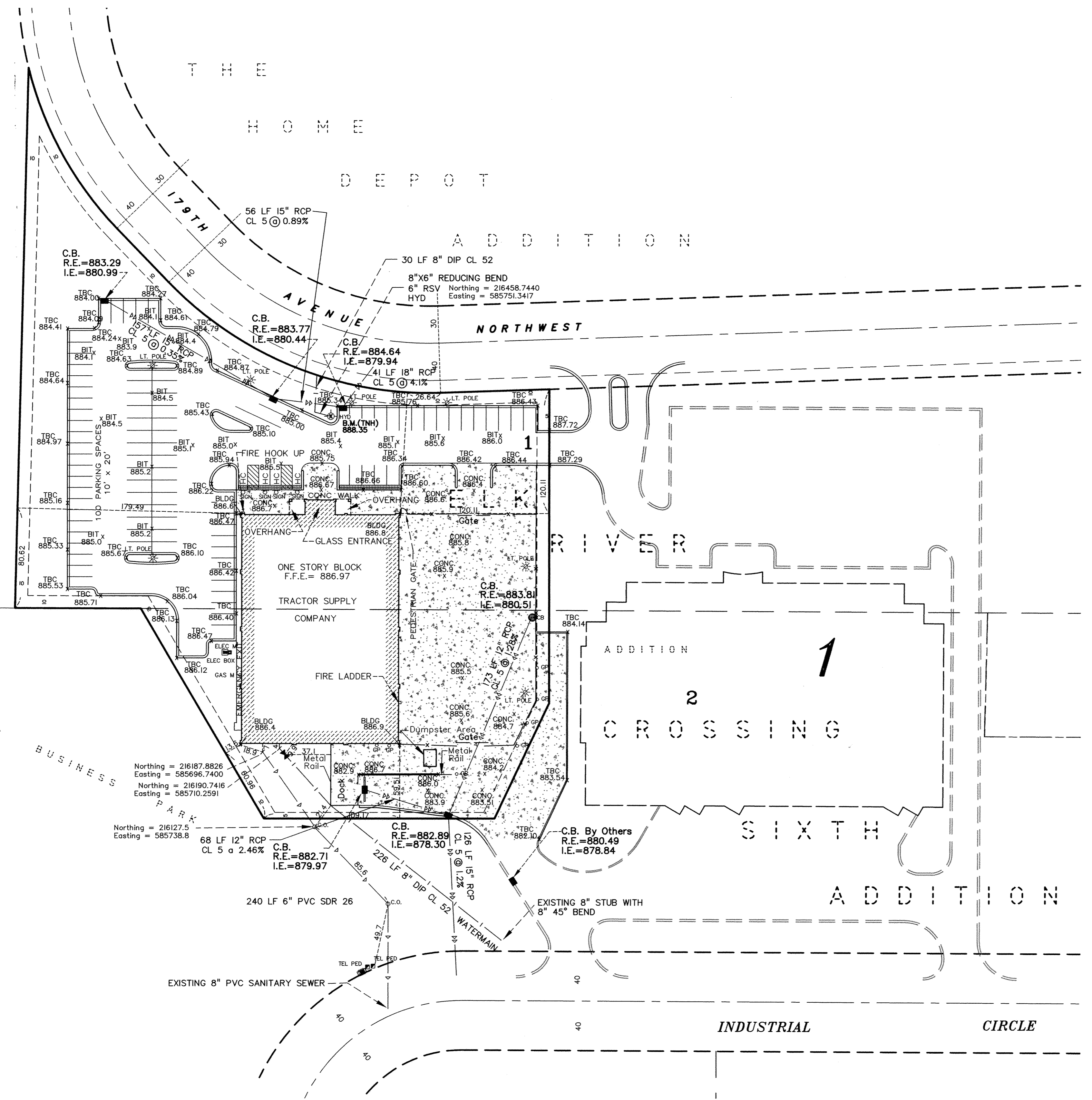


- LEGEND**
- ▨ EXISTING CONCRETE SURFACE
 - ||—||— EXISTING STORM SEWER
 - |—|— EXISTING SANITARY
 - - - - - EXISTING WATER
 - ▨ EXISTING CONCRETE WALL
 - CB EXISTING ROUND CATCH BASIN
 - EXISTING SQUARE CATCH BASIN
 - ⊙ HYD EXISTING FIRE HYDRANT
 - ⊙ LT. POLE EXISTING LIGHT POLE
 - S.O. EXISTING SANITARY CLEAN OUT
 - ⊙ SIGN EXISTING PARKING SIGN
 - ELEC BOX EXISTING ELECTRICAL TRANSFORMER BOX
 - ELEC M EXISTING ELECTRICAL METAL
 - ⊙ B.M. EXISTING BENCHMARK
 - ⊙ TBC 885.33, x PROPOSED SPOT ELEVATION

BENCHMARK: TOP NUT OF HYDRANT
FRONT PARKING LOT ⊙ FRONT OF STORE
= 888.35 (NGVD 29)

RECORD PLAN PREPARED BY
JOHN OLIVER AND ASSOCIATES
Signature: *Dale Campbell*
Dale Campbell 8/16/06

OWNER: AMT DEVELOPMENT
ENGINEER/SURVEYOR: JOHN OLIVER AND ASSOCIATES
GENERAL CONTRACTOR: A.G. TOLLEFSON
UTILITY CONTRACTOR: MINGERS



Northing = 216187.8826
Easting = 585696.7400
Northing = 216190.7416
Easting = 585710.2591
Northing = 216127.5
Easting = 585738.8

ELK RIVER BUSINESS PARK

2006