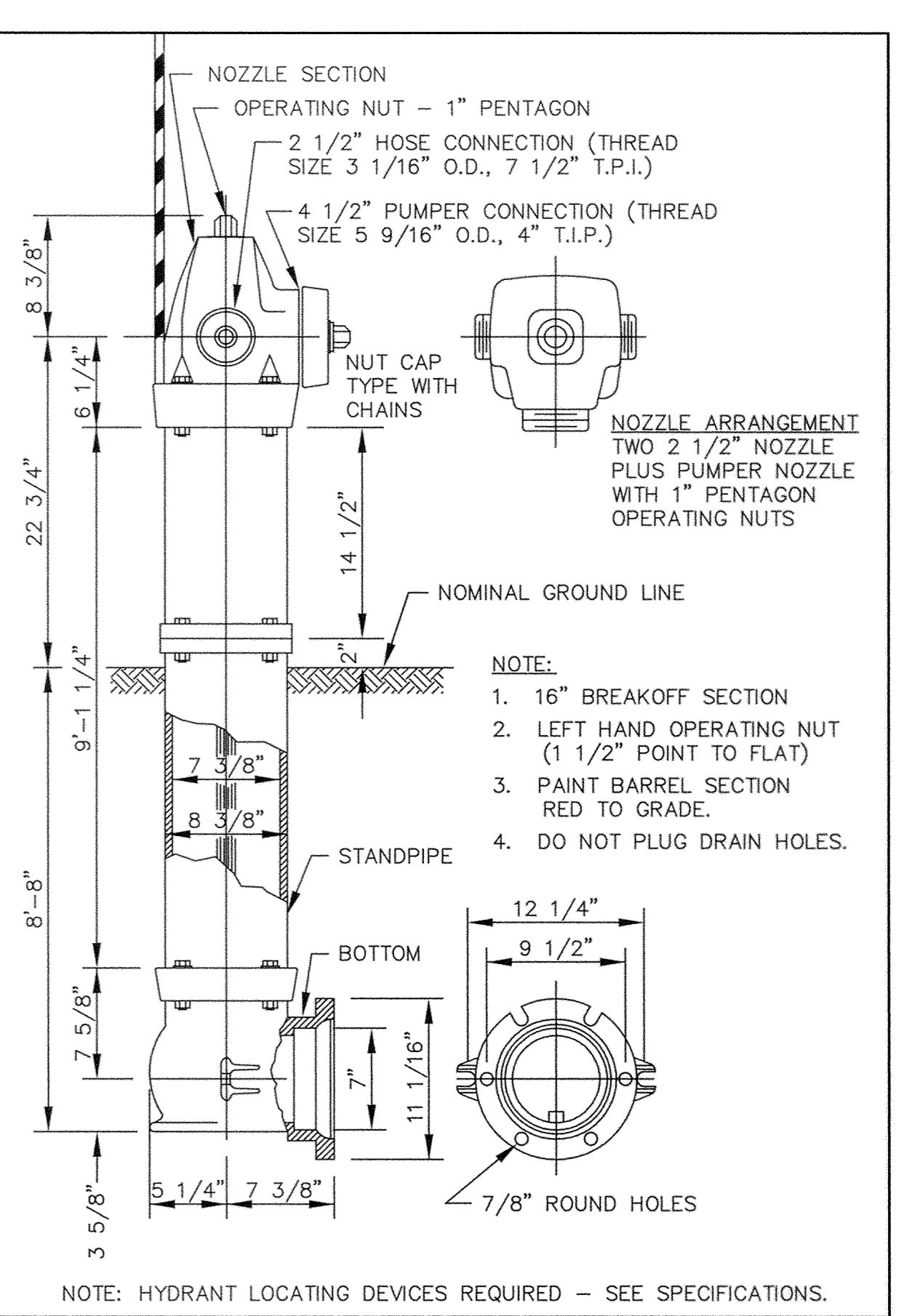


SAFCO PRODUCTS • NEW UPR, MINNESOTA
REORDER BY PART NUMBER 8332

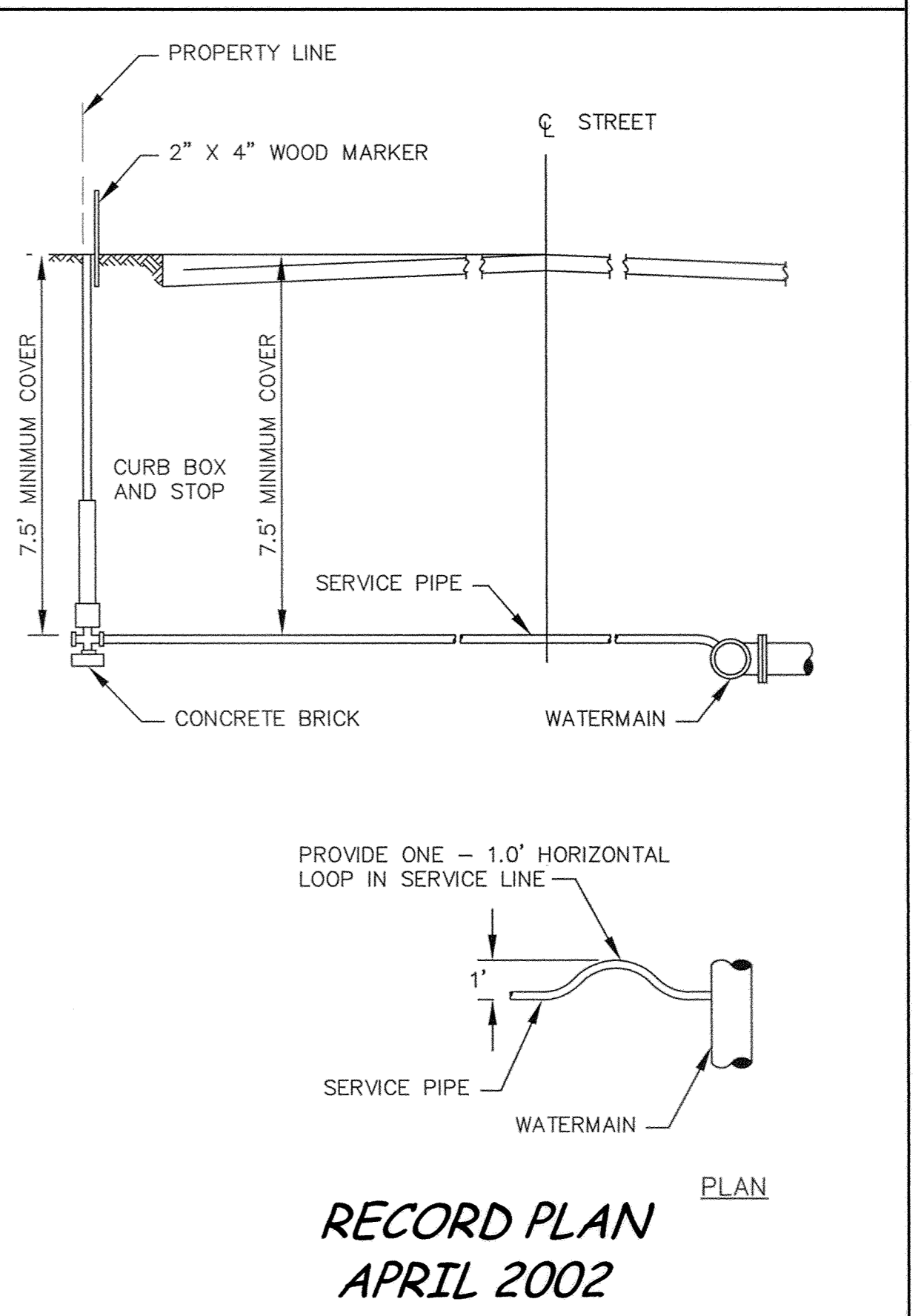
SAFCO PRODUCTS • NEW UPR, MINNESOTA
REORDER BY PART NUMBER 8332

SAFCO PRODUCTS • NEW UPR, MINNESOTA
REORDER BY PART NUMBER 8332

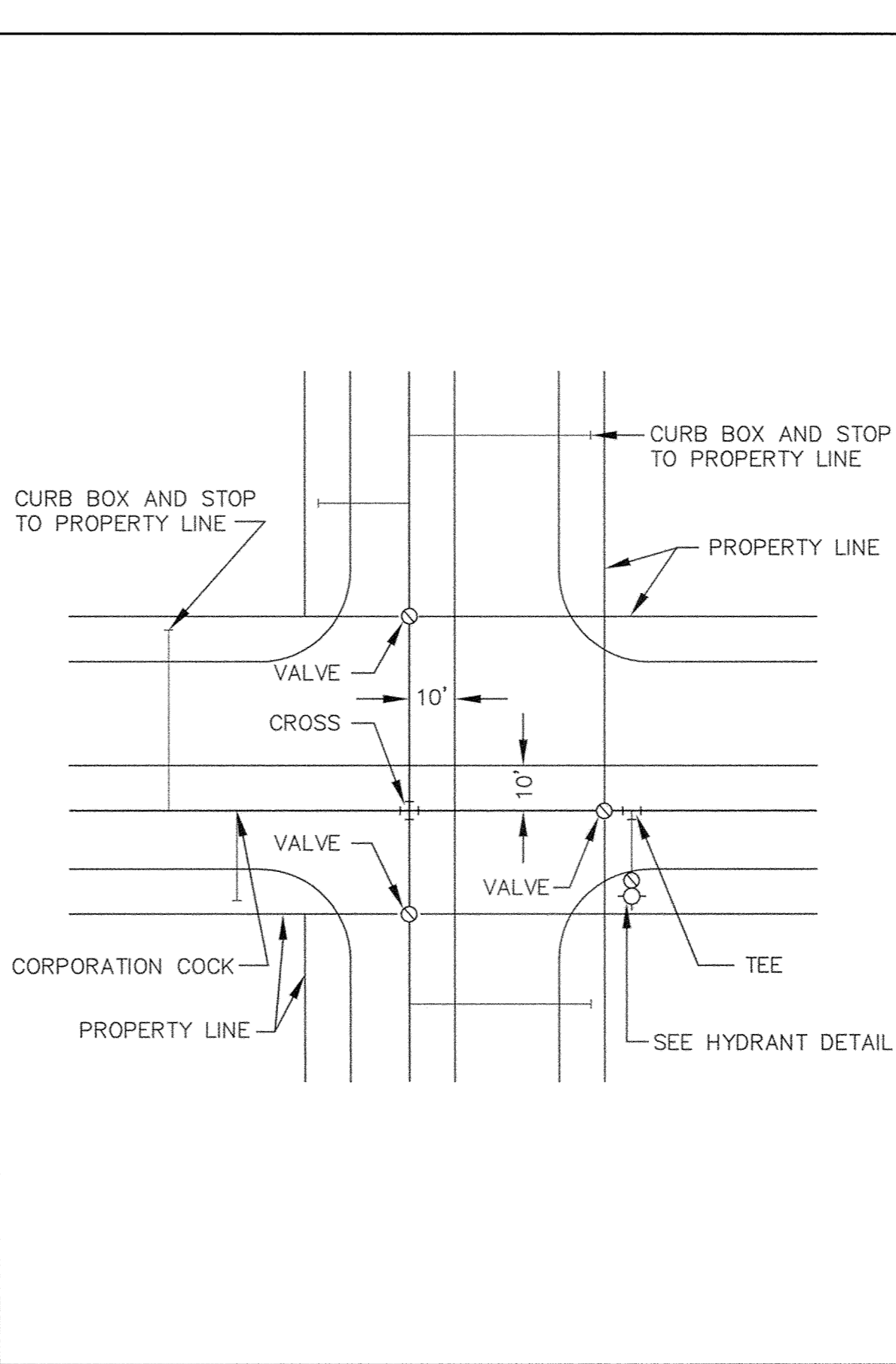
SAFCO PRODUCTS • NEW UPR, MINNESOTA
REORDER BY PART NUMBER 8332



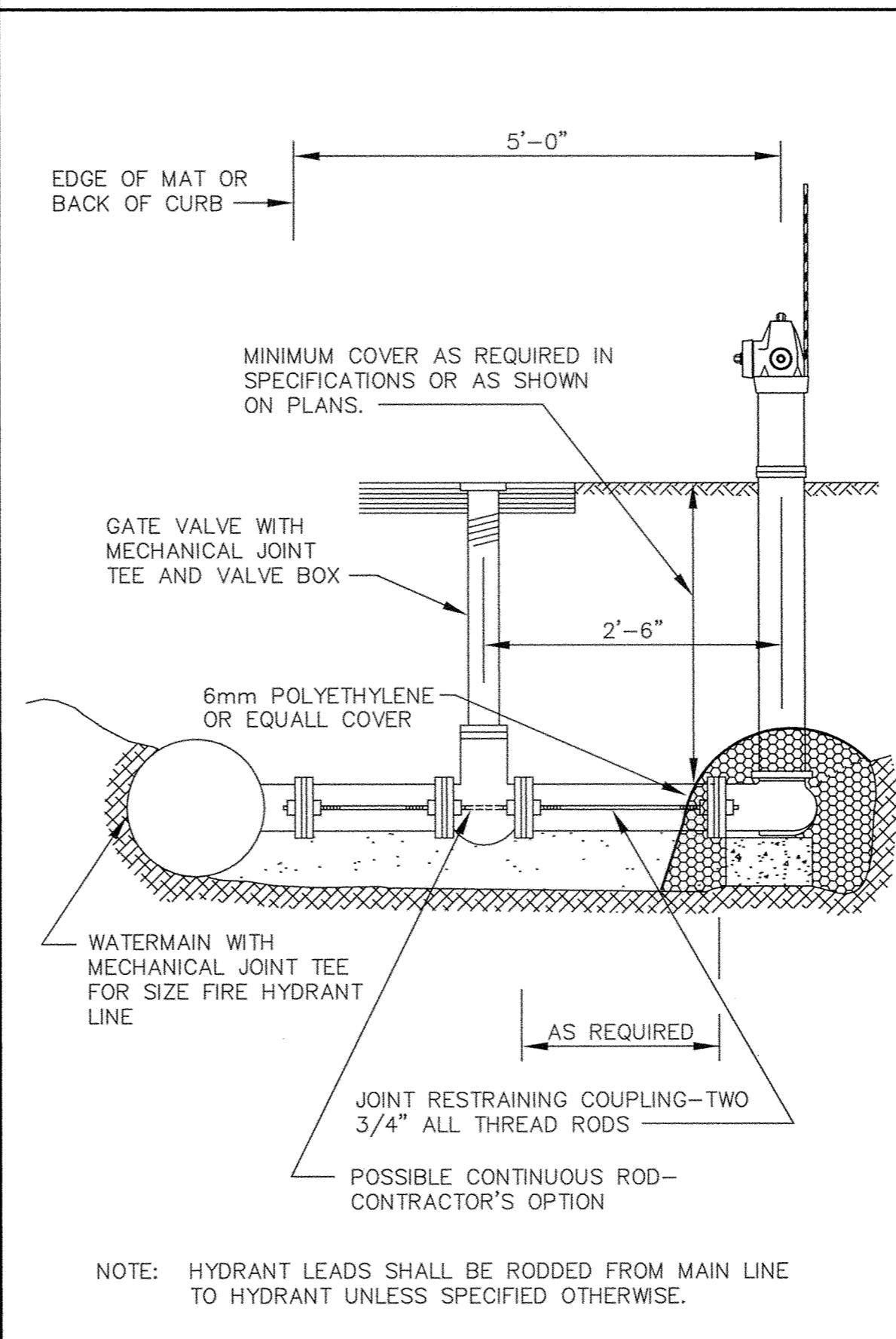
PACER HYDRANT DETAIL



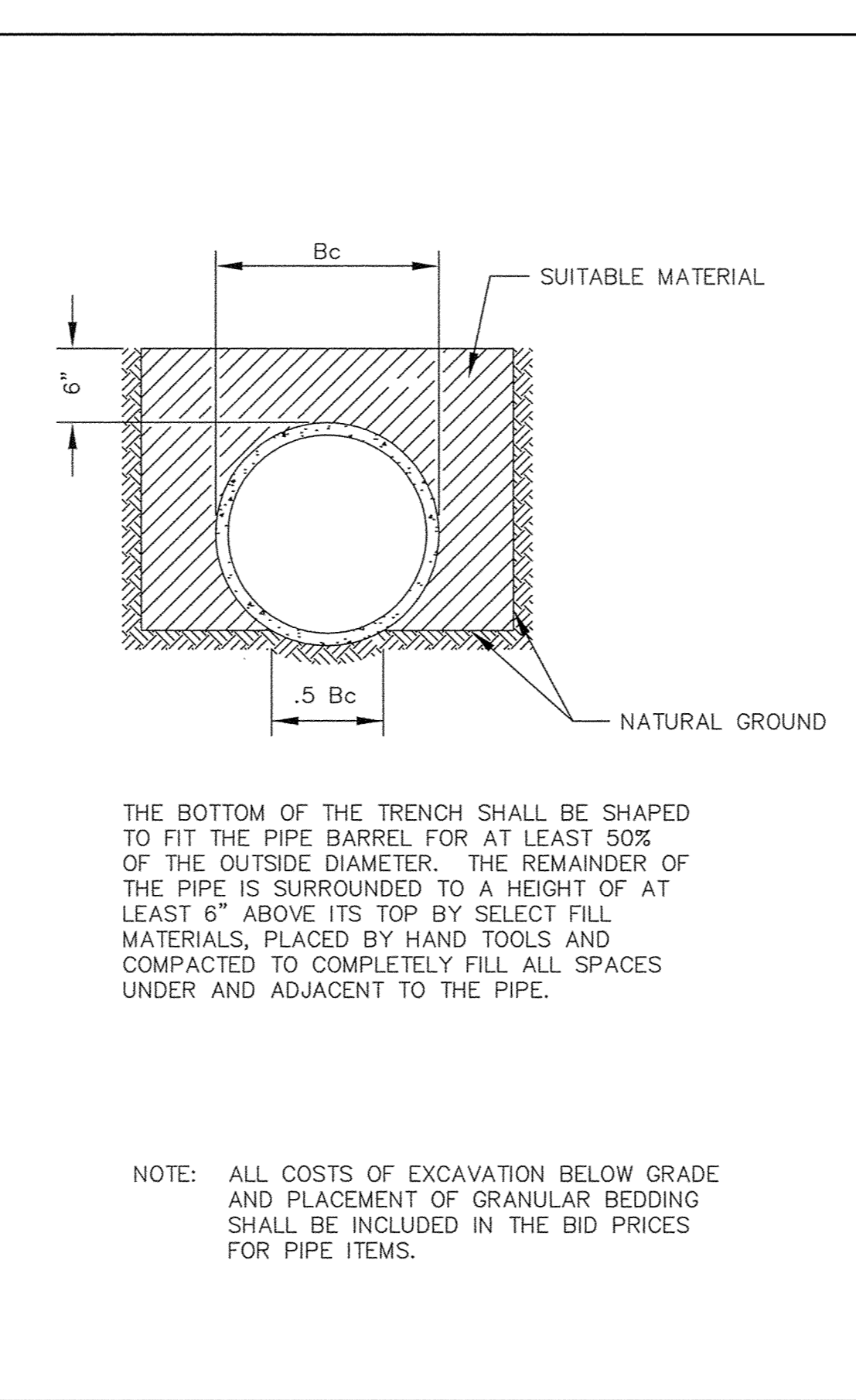
TYPICAL SERVICE DETAIL



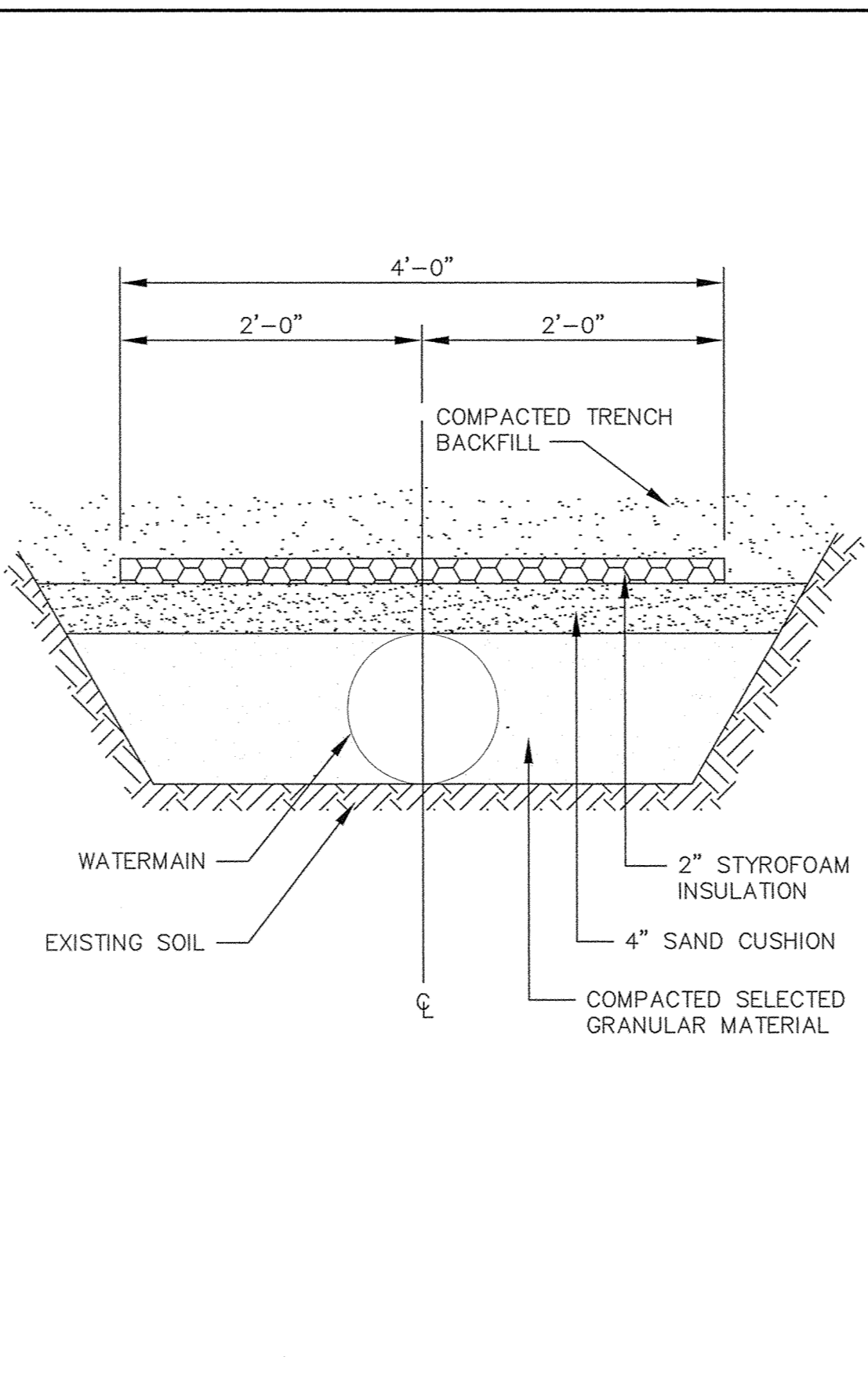
TYPICAL WATER LAYOUT



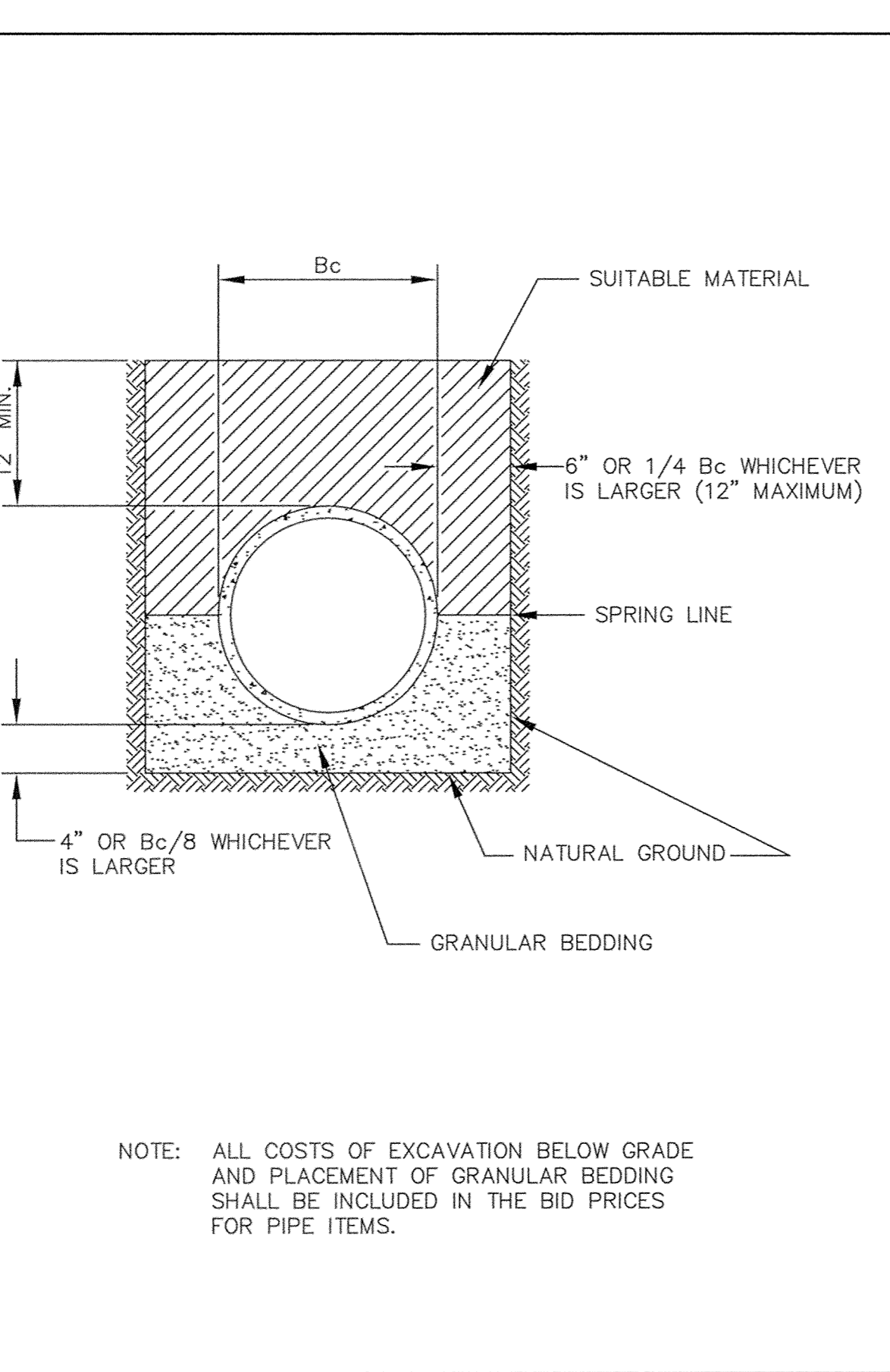
RODDING DETAIL



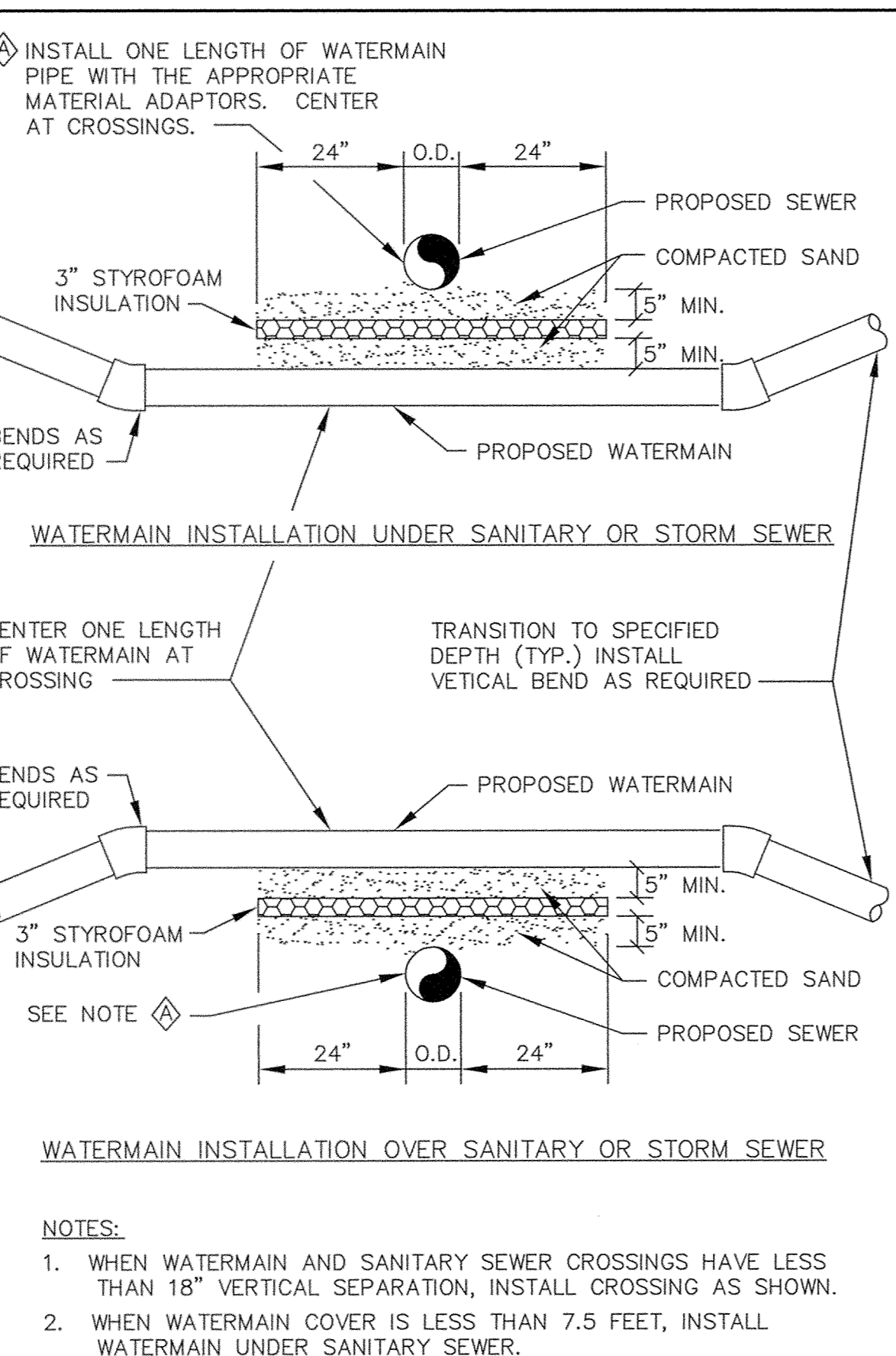
CLASS C PIPE BEDDING



PIPE INSULATION DETAIL



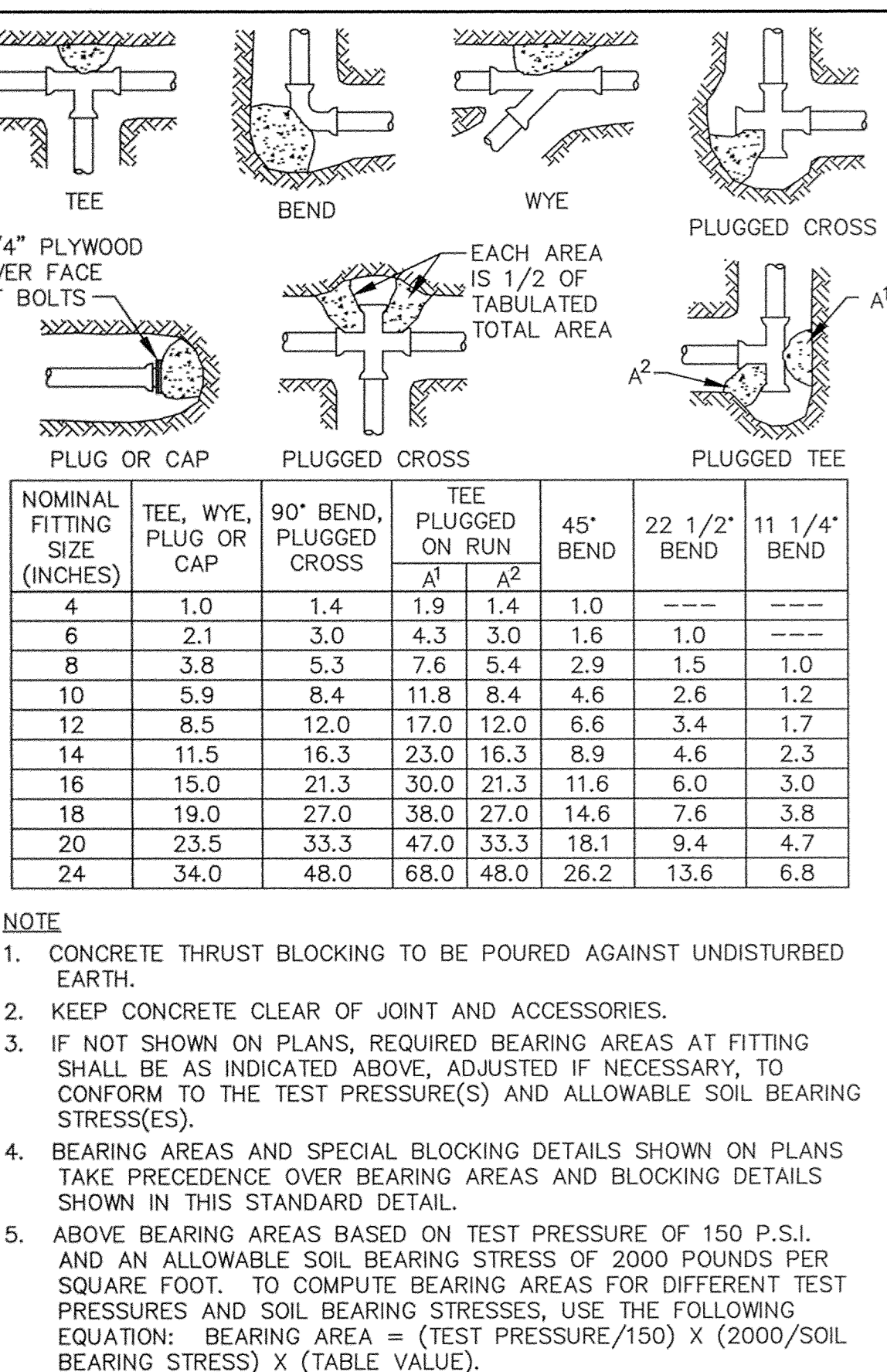
CLASS B PIPE BEDDING



WATERMAIN CROSSING



THRUST BLOCKING DETAIL



WATERMAIN CROSSING

DESIGNED BY: _____ DRAWN BY: EY
APPROVED BY: _____ JOB NUMBER 804411J
CAD DATE: April 25, 2000 10:34:50 a.m.
CAD FILE: 804411j\804411-WM.DWG

I HEREBY CERTIFY THAT THIS PLAN, SPECIFICATION, OR REPORT WAS PREPARED BY ME OR UNDER MY DIRECT SUPERVISION AND THAT I AM A DULY REGISTERED PROFESSIONAL ENGINEER UNDER THE LAWS OF THE STATE OF MINNESOTA.
DATE _____ REG. NO. 15316

NO.	DATE	BY	REVISION DESCRIPTION

1326 ENERGY PARK DRIVE
ST. PAUL, MINNESOTA 55108
(651) 644-4389
Howard R. Green Company
CONSULTING ENGINEERS

CITY OF ELK RIVER
THE WOODS AT HILLSIDE
STREET AND UTILITY IMPROVEMENTS

WATERMAIN CONSTRUCTION DETAILS

SHEET NO.
7
OF
9
WOODS 1.00