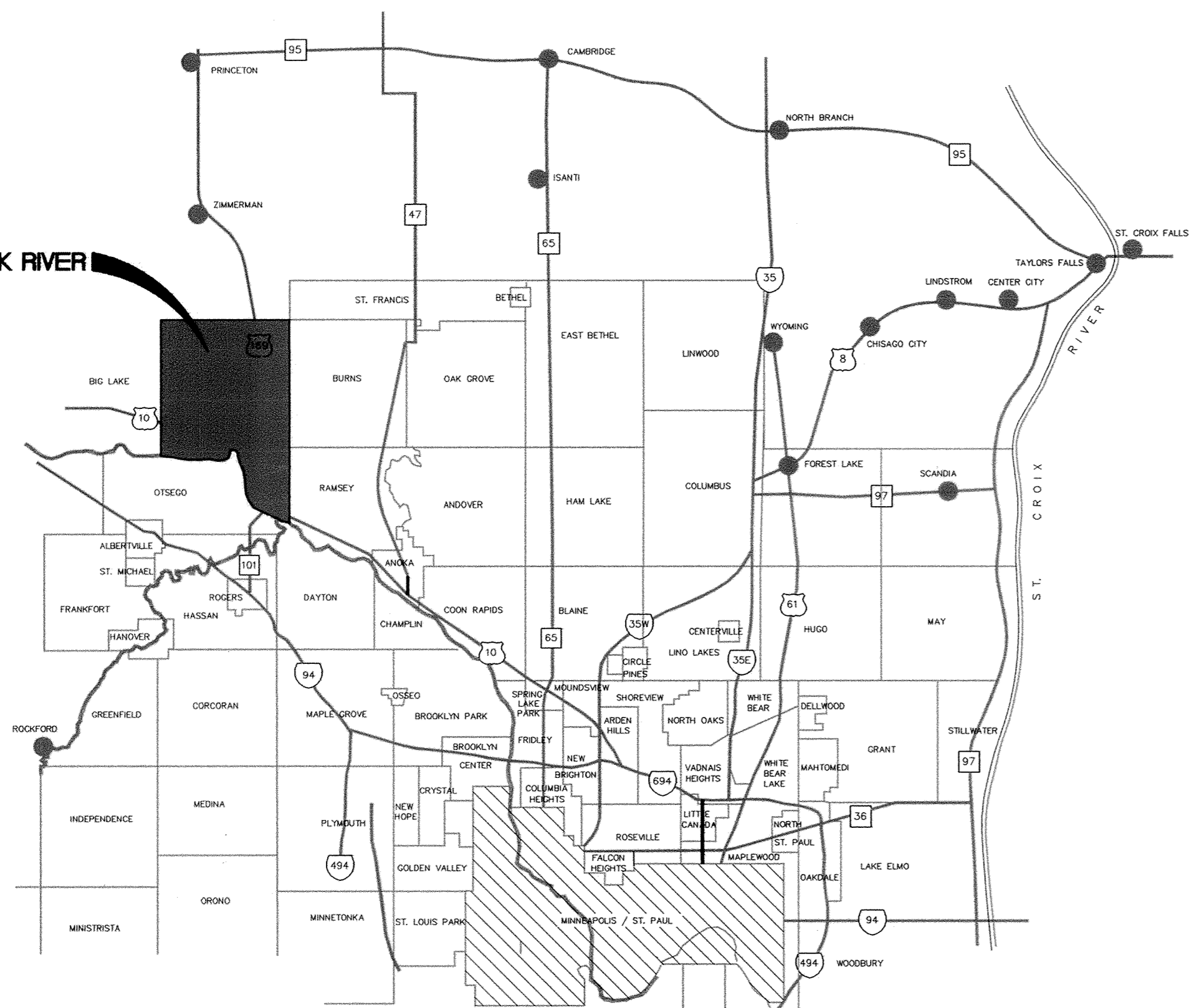
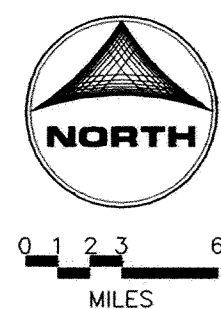


CITY OF ELK RIVER



# THE WOODS OF HILLSIDE IV SANITARY, WATERMAIN, STORM SEWER AND STREET CONSTRUCTION

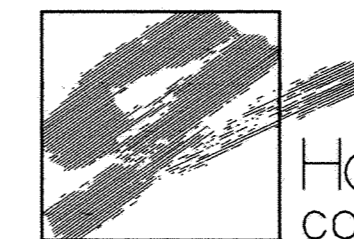
INDEX	
SHEET NO. 1	TITLE SHEET
SHEET NO. 2	LOCATION MAP AND TYPICAL SECTIONS
SHEET NO. 3-6	PLAN AND PROFILE
SHEET NO. 7-10	DETAILS

THIS PLAN CONTAINS 10 SHEETS

**RECORD PLAN  
JANUARY 2005**

I HEREBY CERTIFY THAT THIS PLAN, SPECIFICATION, OR REPORT WAS PREPARED BY ME OR UNDER MY DIRECT SUPERVISION AND THAT I AM A DULY LICENSED PROFESSIONAL ENGINEER UNDER THE LAWS OF THE STATE OF MINNESOTA.

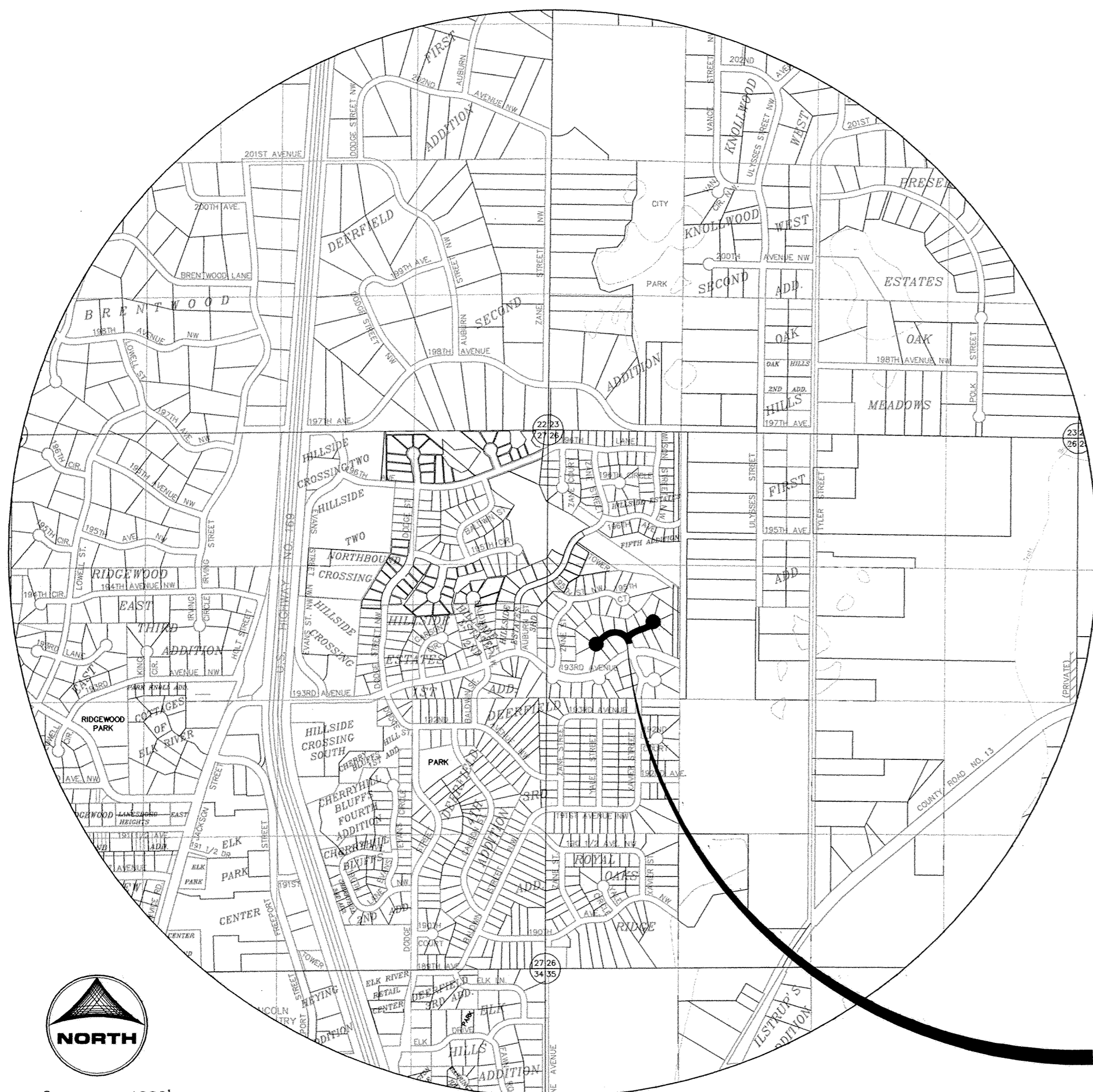
*John M. Anderson* JOHN M. ANDERSON  
DATE 2/2/05 LIC. NO. 25889



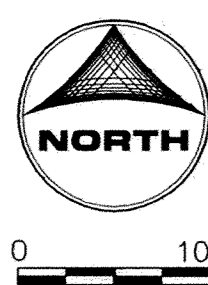
1326 ENERGY PARK DRIVE  
ST. PAUL, MINNESOTA 55108  
(651) 644-4389  
Howard R. Green Company  
CONSULTING ENGINEERS

PREPARED FOR:

**THE CITY OF ELK RIVER**



PROJECT LOCATION



LOCATION MAP