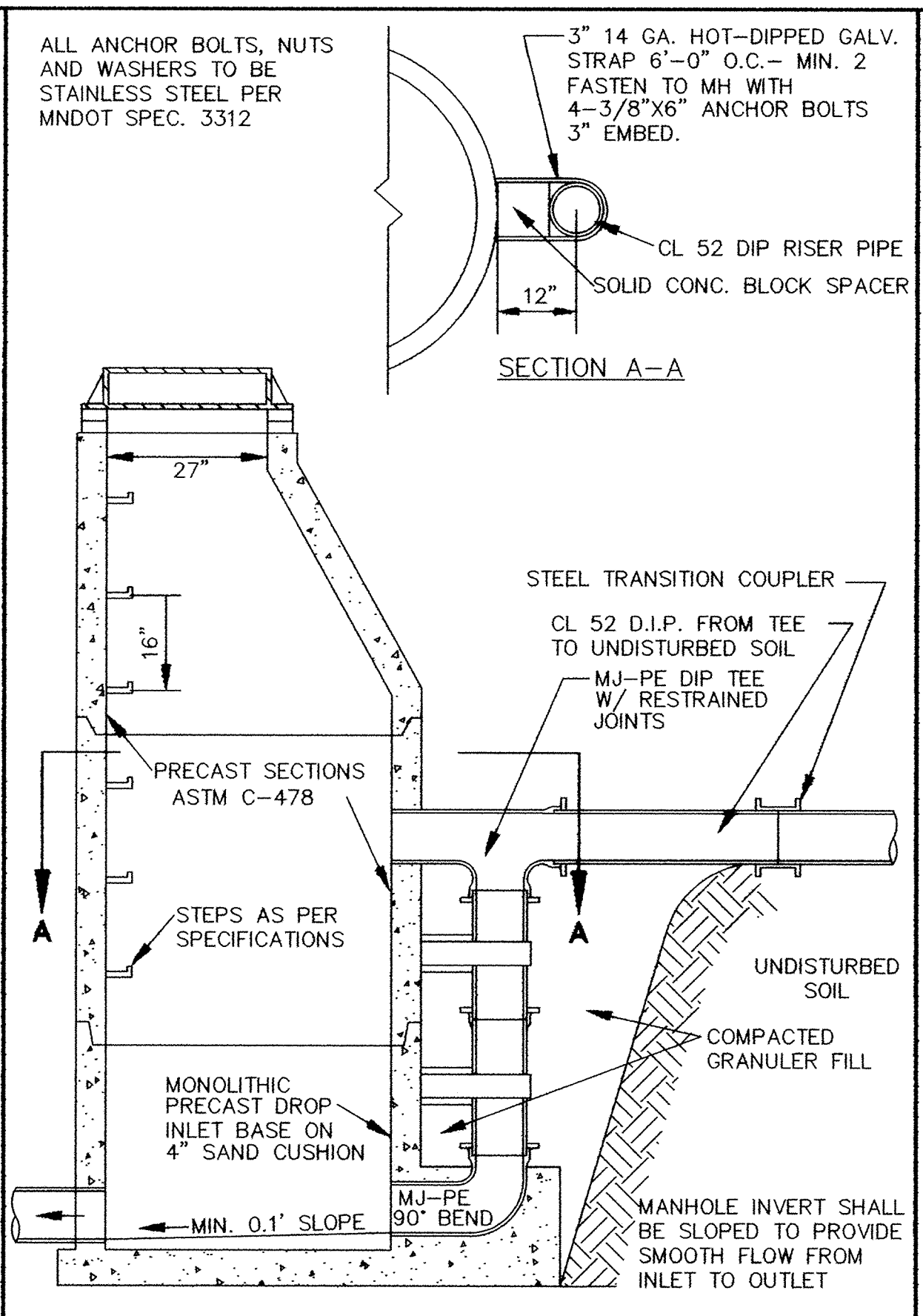
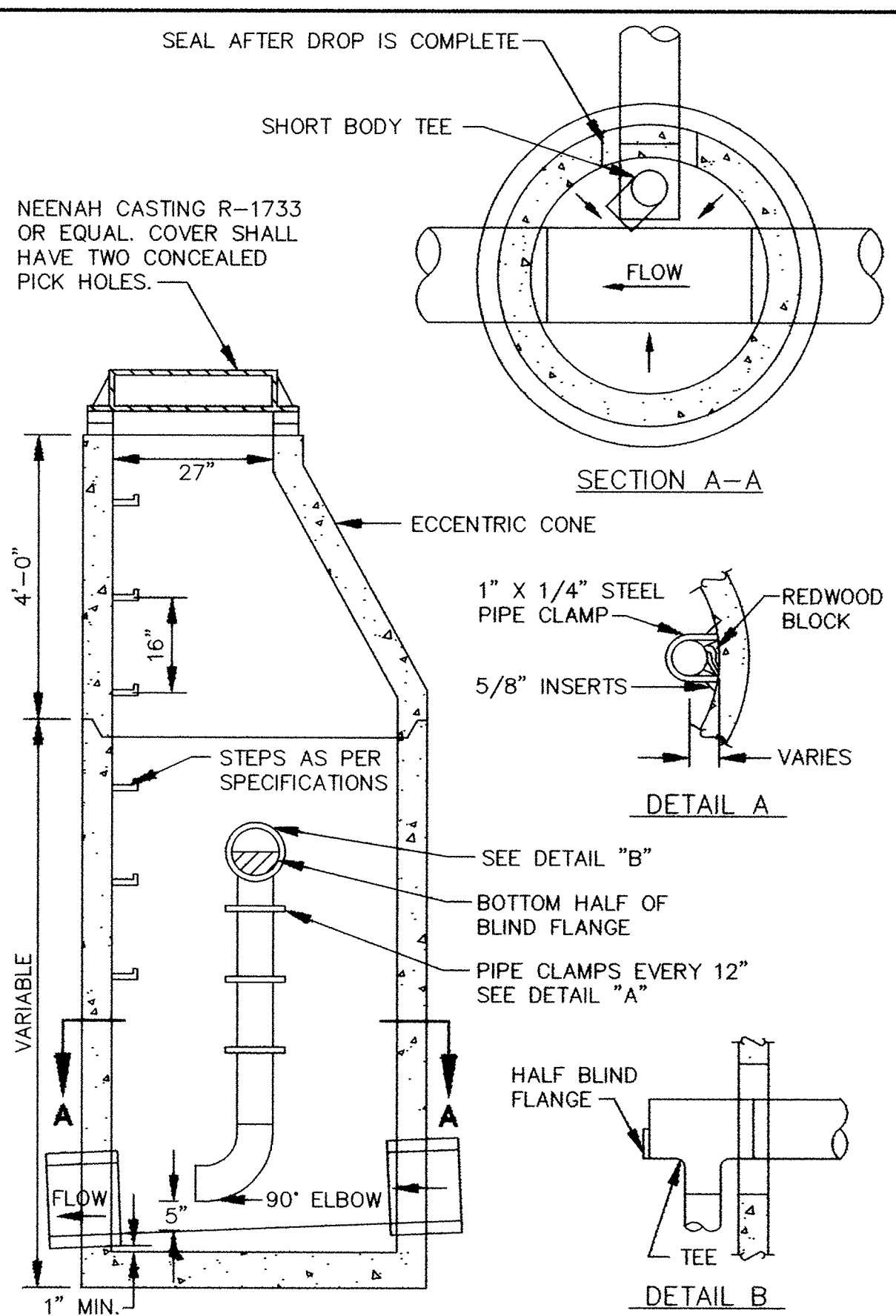


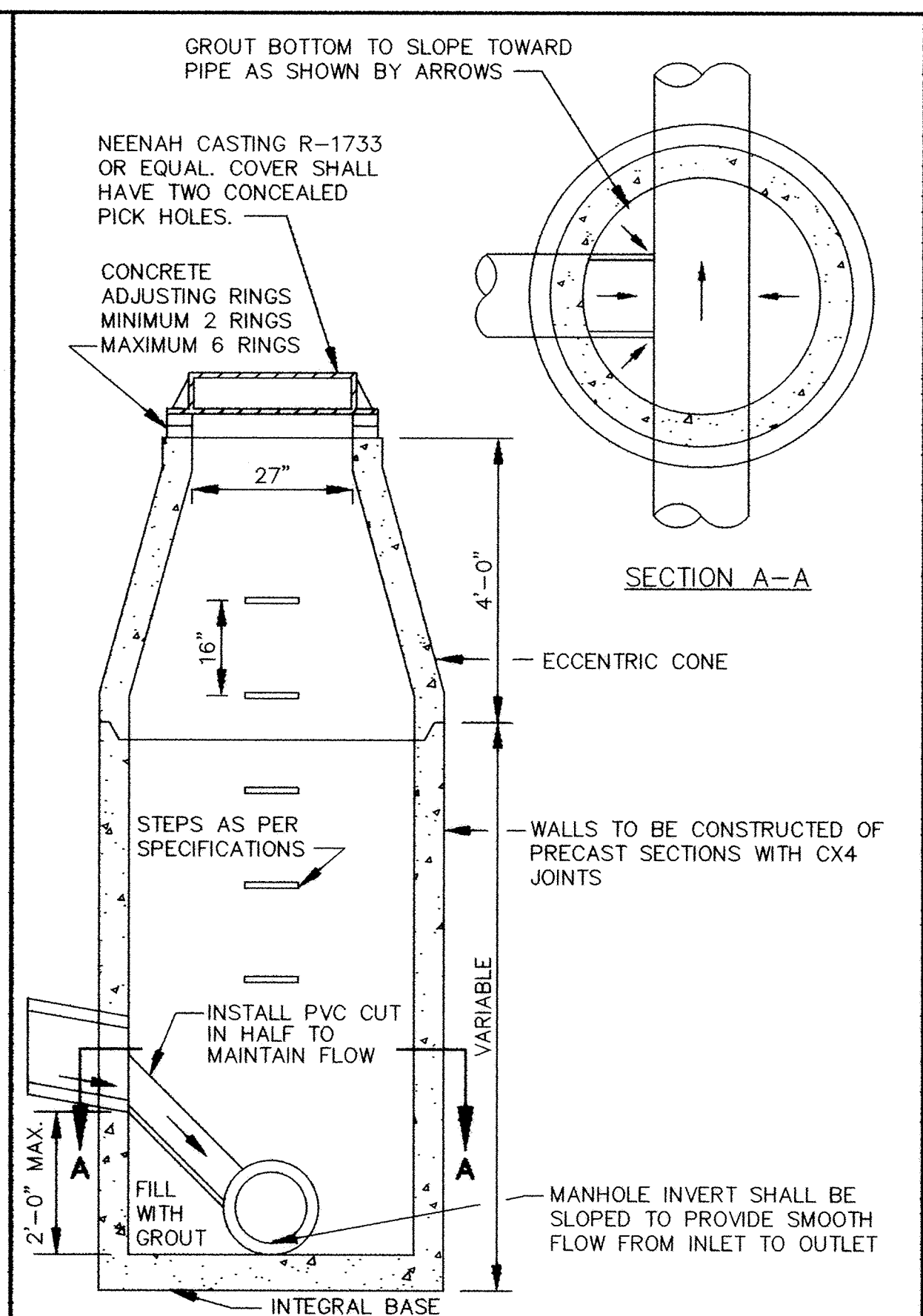
STANDARD AIR RELIEF MANHOLE



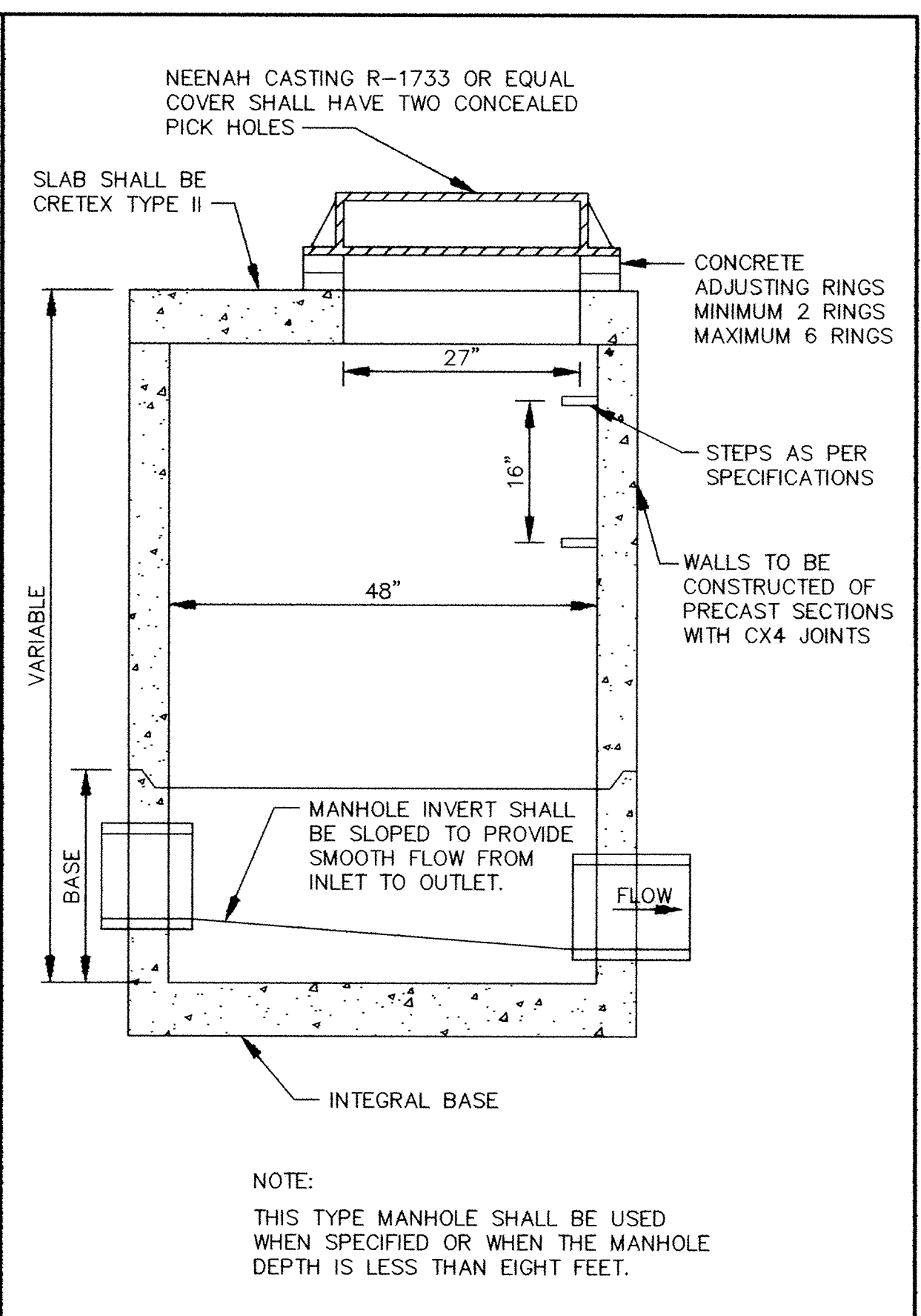
OUTSIDE DROP MANHOLE



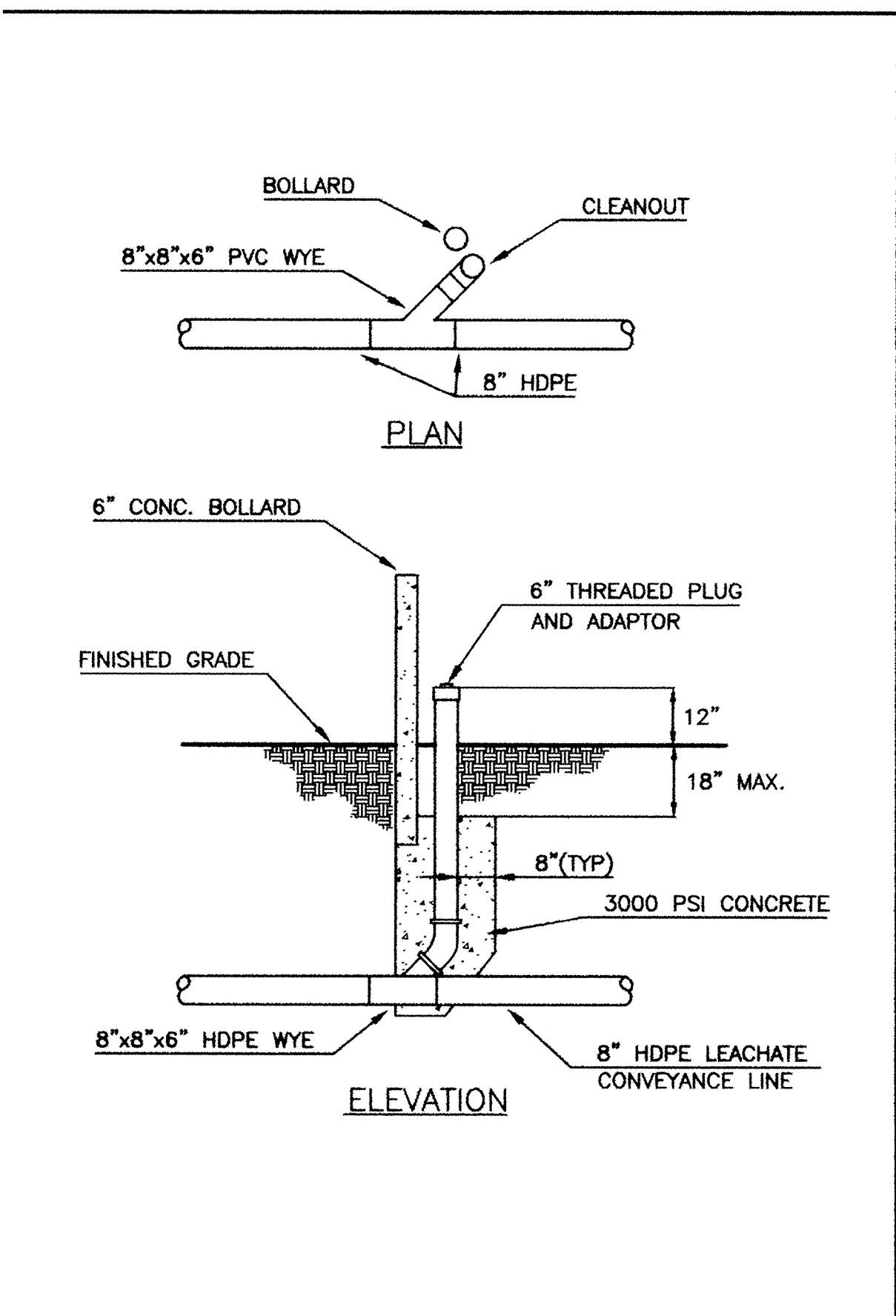
INSIDE DROP MANHOLE



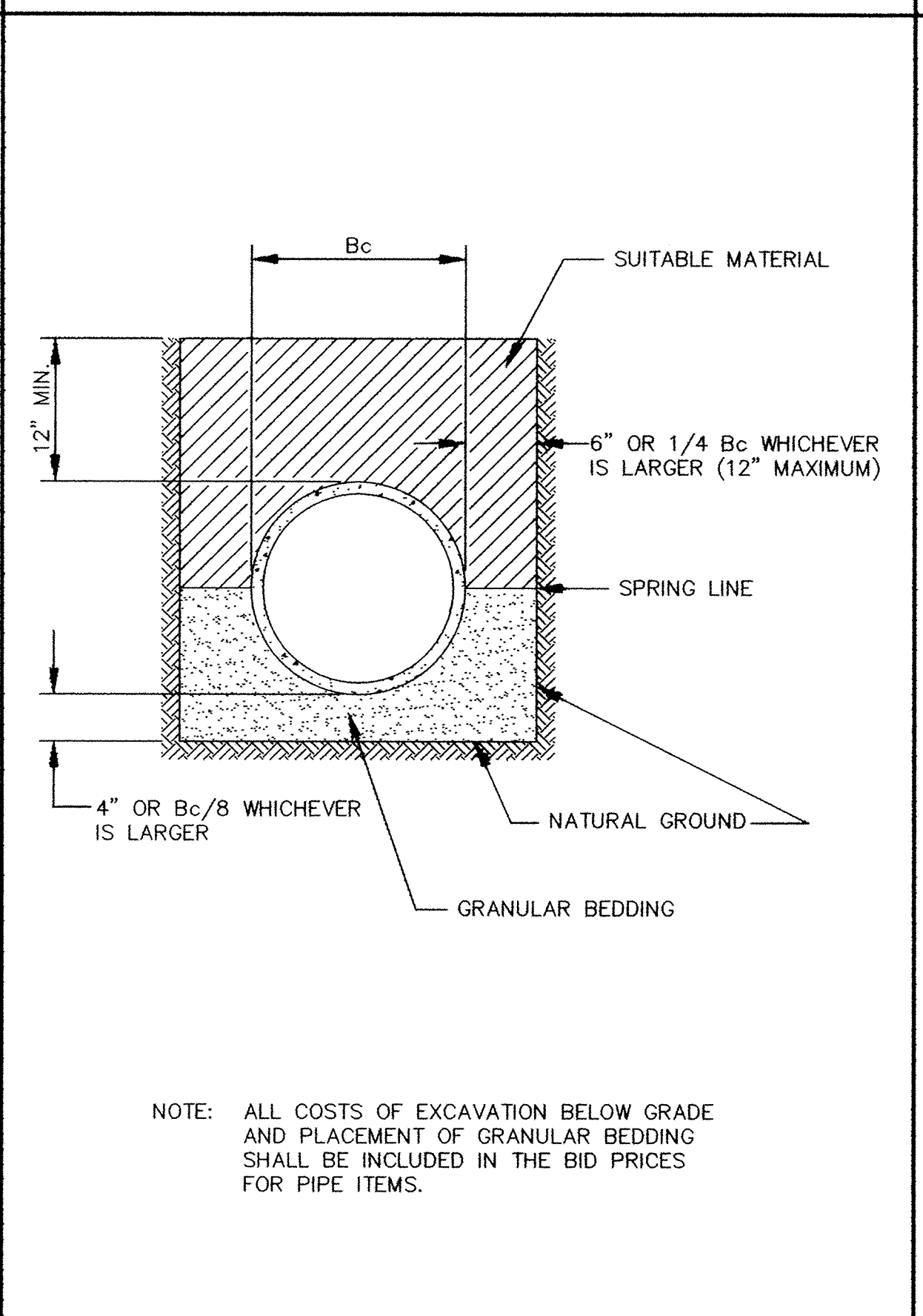
INSIDE DROP MANHOLE (TWO FEET OR LESS)



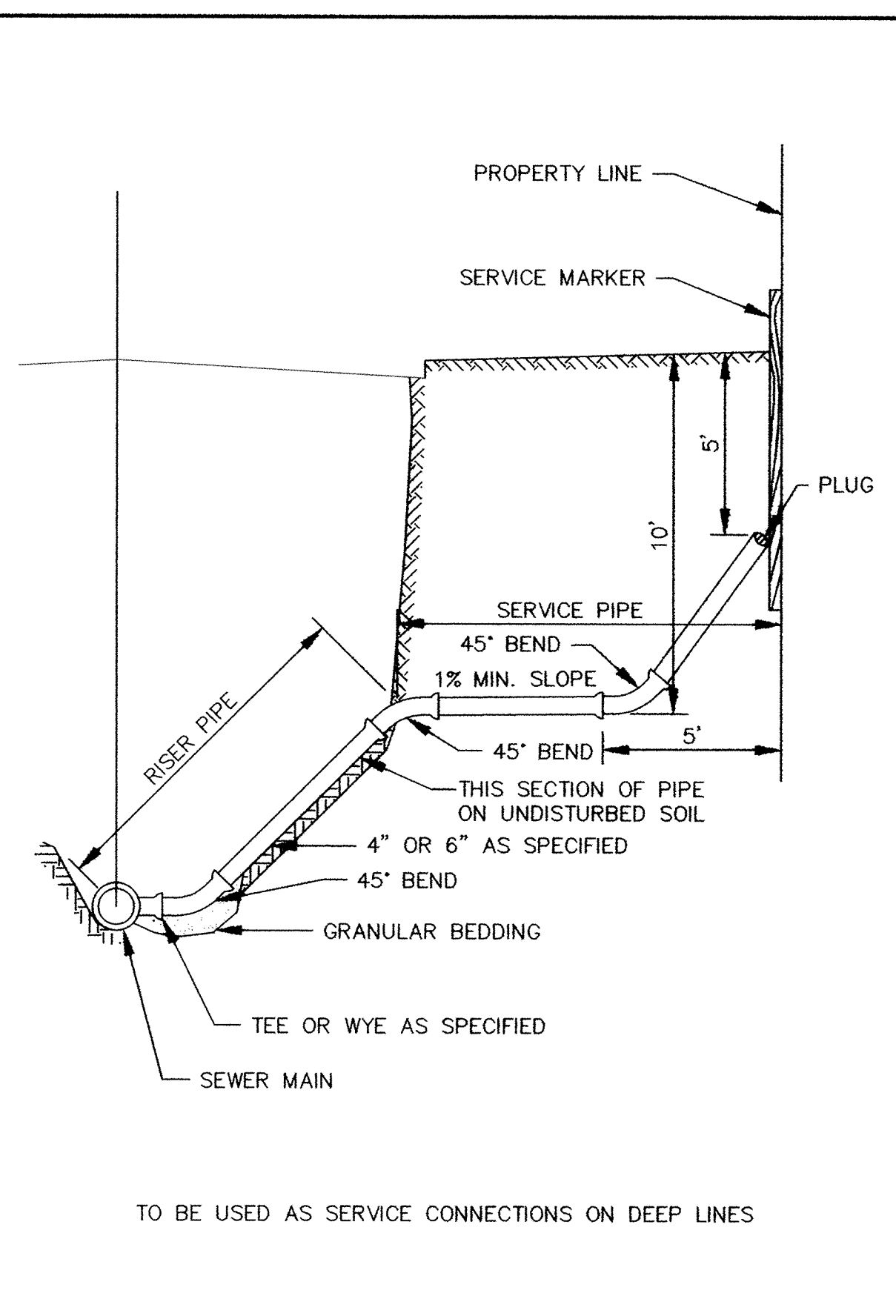
SLAB TOP MANHOLE



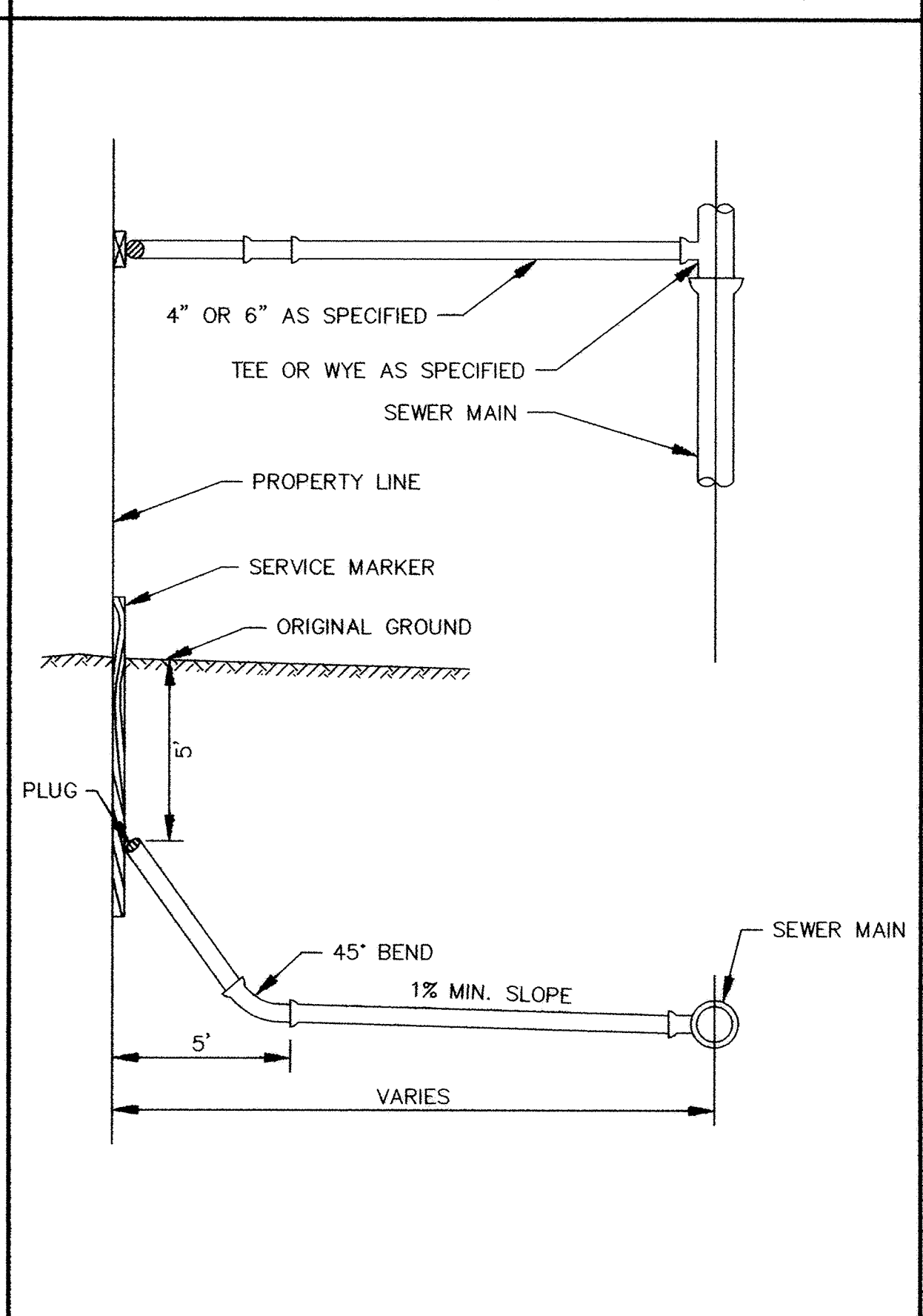
TYPE B CLEANOUT DETAIL



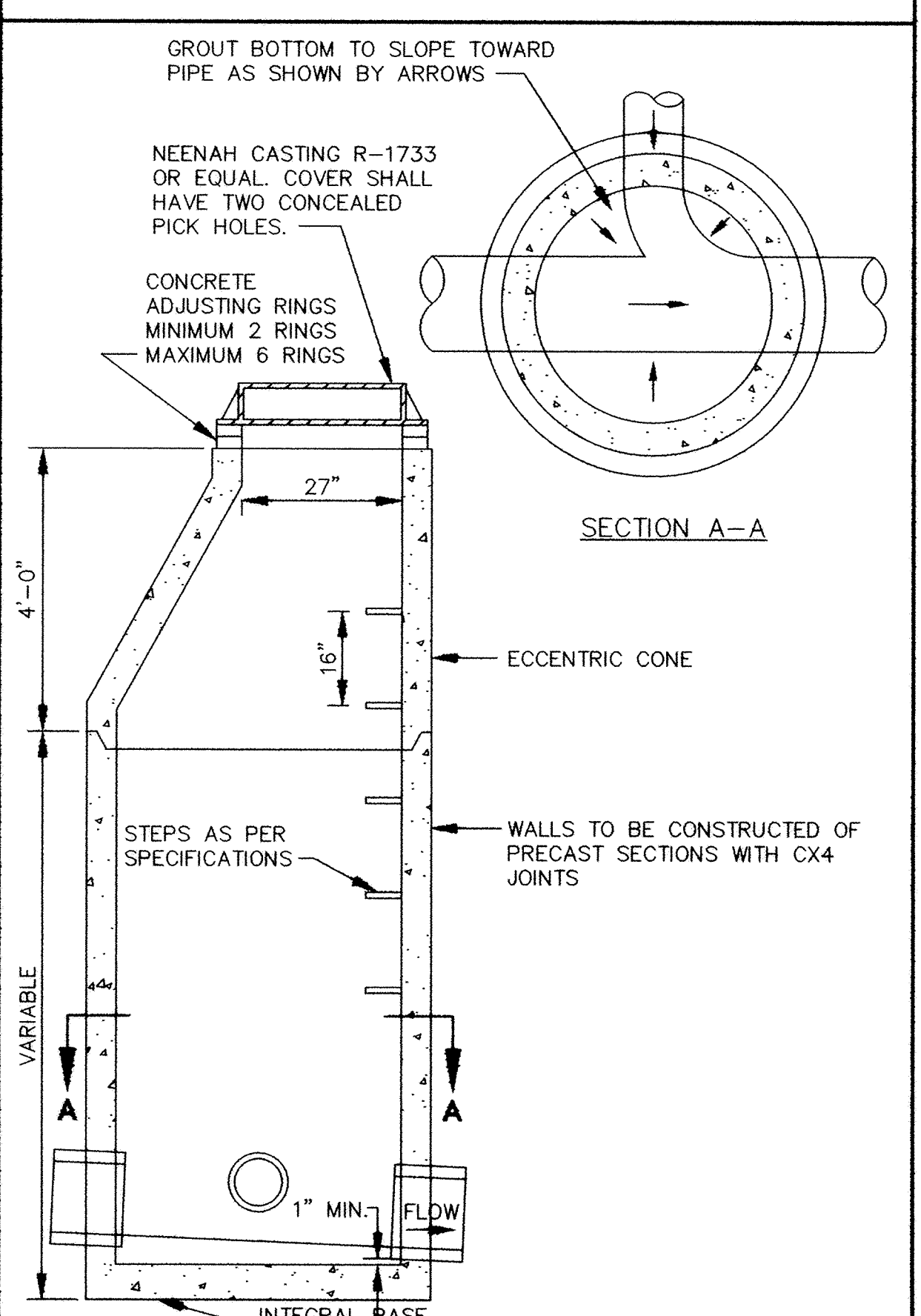
CLASS B PIPE BEDDING



SERVICE RISER SECTION



TYPICAL HOUSE SERVICE



STANDARD MANHOLE

DESIGNED BY: \_\_\_\_\_ DRAWN BY: EY  
APPROVED BY: \_\_\_\_\_ JOB NUMBER 811385J  
CAD DATE: February 01, 2003 9:47:30 a.m.  
CAD FILE: 811385j.dwg\811385-SN.DWG (JLALLEN)

I HEREBY CERTIFY THAT THIS PLAN, SPECIFICATION, OR REPORT WAS PREPARED BY ME OR UNDER MY DIRECT SUPERVISION AND THAT I AM A DULY LICENSED PROFESSIONAL ENGINEER UNDER THE LAWS OF THE STATE OF MINNESOTA.  
DATE: 8/05/2002  
TERRY J. MAURER, P.E. LIC. NO. 15316

| NO. | DATE | BY | REVISION DESCRIPTION |
|-----|------|----|----------------------|
|     |      |    |                      |
|     |      |    |                      |
|     |      |    |                      |

1326 ENERGY PARK DRIVE  
ST. PAUL, MINNESOTA 55108  
(651) 644-4389  
**Howard R. Green Company**  
CONSULTING ENGINEERS

**CITY OF ELK RIVER**  
**THE WOODS OF HILLSIDE III**  
**STREET AND UTILITY IMPROVEMENTS**

**SANITARY SEWER CONSTRUCTION DETAILS**

SHEET NO.  
**9**  
OF  
**11**

DRAWING NUMBER  
WOODS3:02  
SARCO PRODUCTS • NEW HOPE, MINNESOTA  
RENDERED BY PLAN NUMBER 8252  
PREPARED BY: TERRY J. MAURER, P.E.