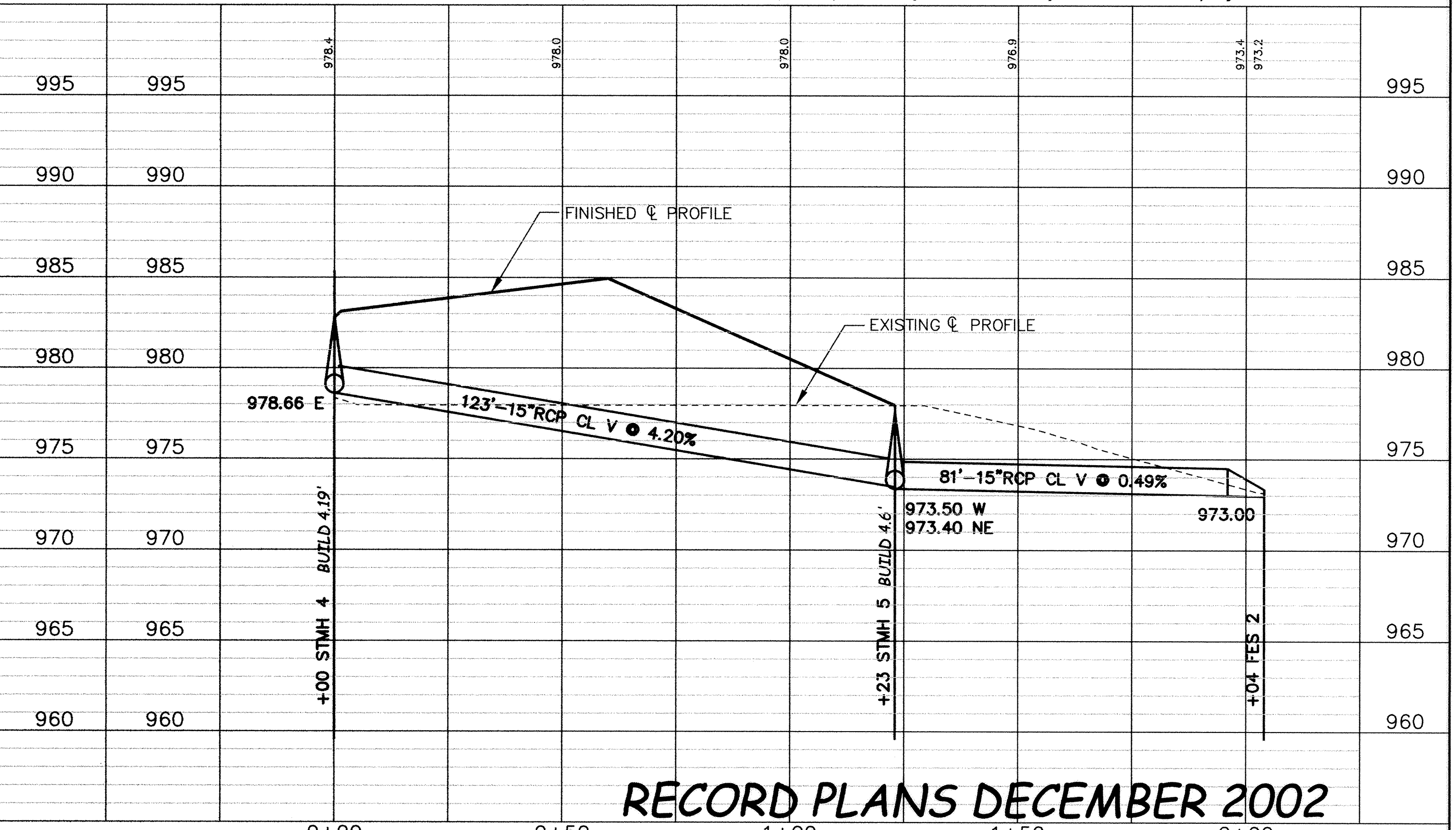
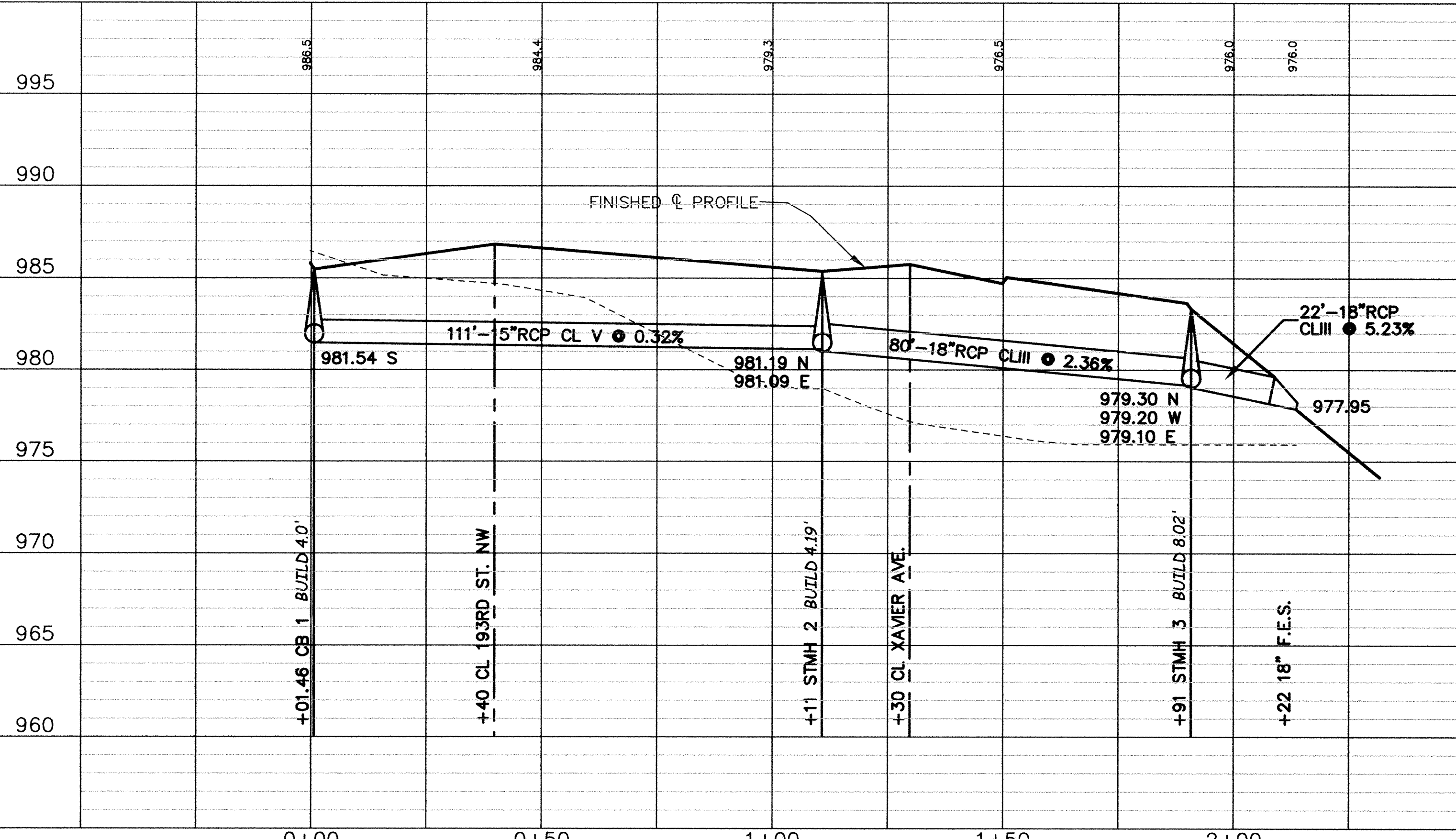
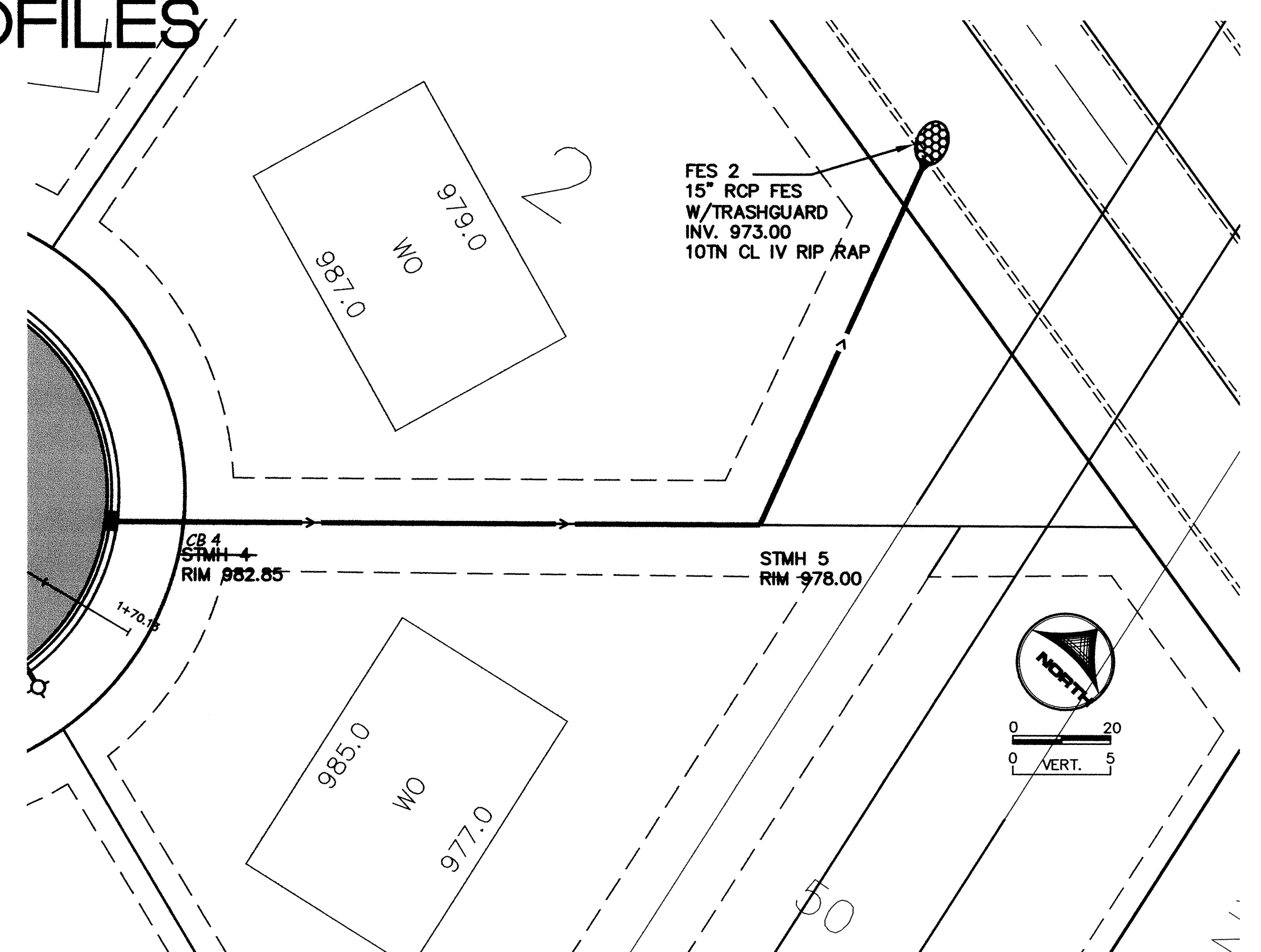
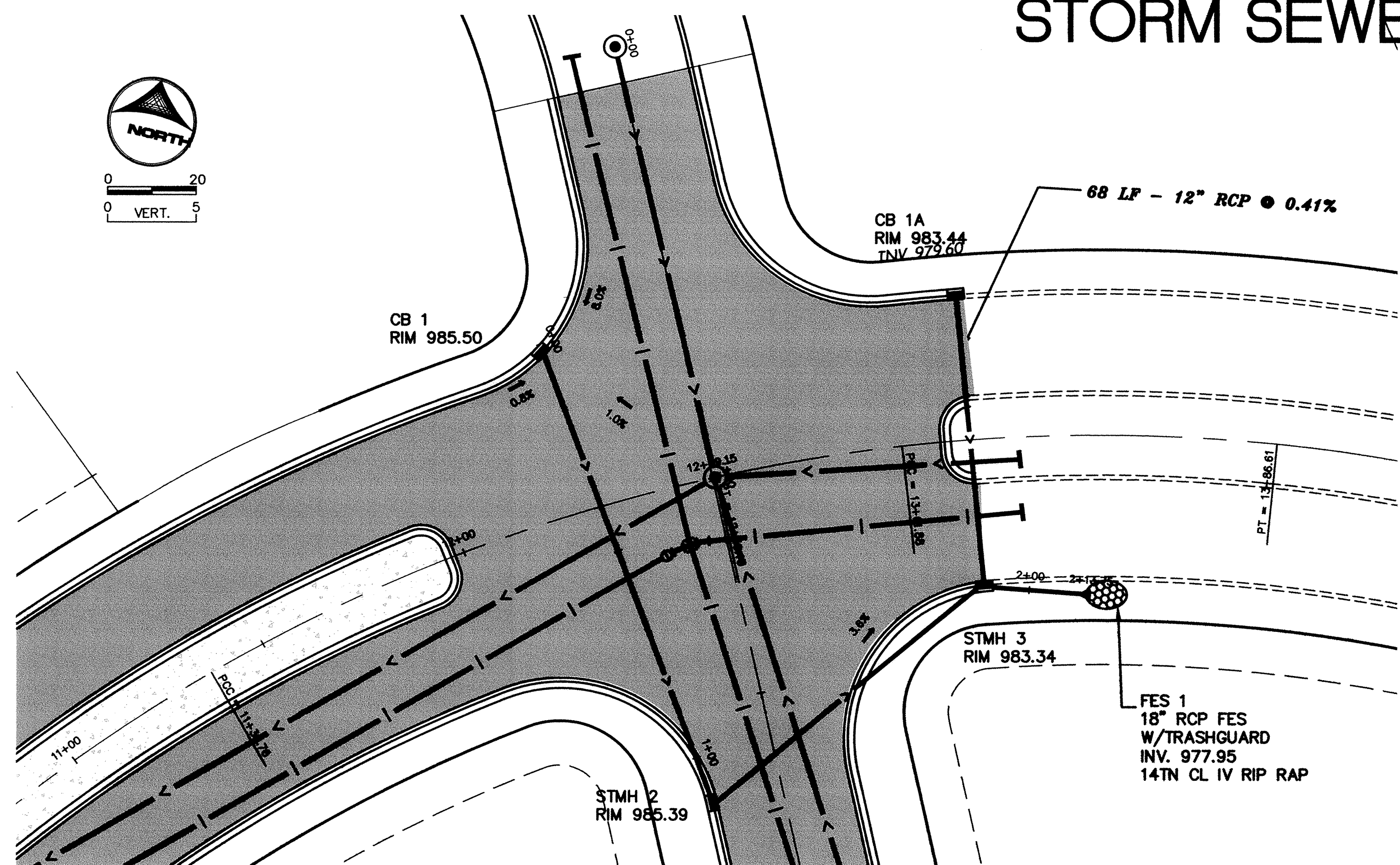


STORM SEWER PROFILES



RECORD PLANS DECEMBER 2002

DESIGNED BY: EY DRAWN BY: TAE
 APPROVED BY: TJM JOB NUMBER: 811385J
 CAD DATE: August 02, 2002 8:12:01 a.m.
 CAD FILE: 811385j\dwg\811385P-SS.DWG (EYOUNG)

I HEREBY CERTIFY THAT THIS PLAN, SPECIFICATION, OR REPORT WAS PREPARED BY ME OR UNDER MY DIRECT SUPERVISION AND THAT I AM A DULY LICENSED PROFESSIONAL ENGINEER UNDER THE LAWS OF THE STATE OF MINNESOTA.
 SIGNATURE: _____ DATE: _____
 PRINTED NAME: TERRY J. MAUER LIC. NO.: 15316

NO.	DATE	BY	REVISION DESCRIPTION
1	10/04/02	EY	LOWERED CUL DE SAC
1	10/24/02	EY	REVISED STORM SEWER

1326 ENERGY PARK DRIVE
 ST. PAUL, MINNESOTA 55108
 (651) 644-4389
Howard R. Green Company
 CONSULTING ENGINEERS

CITY OF ELK RIVER
 THE WOODS OF HILLSIDE III
 STREET AND UTILITY IMPROVEMENTS

STORM SEWER PROFILES
 STREET AND UTILITY IMPROVEMENTS

SHEET NO.
P5

DRAWING NUMBER
 WOODS3.02
 SARGO PRODUCTS • NEW HOPE, MINNESOTA
 REORDER BY PART NUMBER 8552
 7