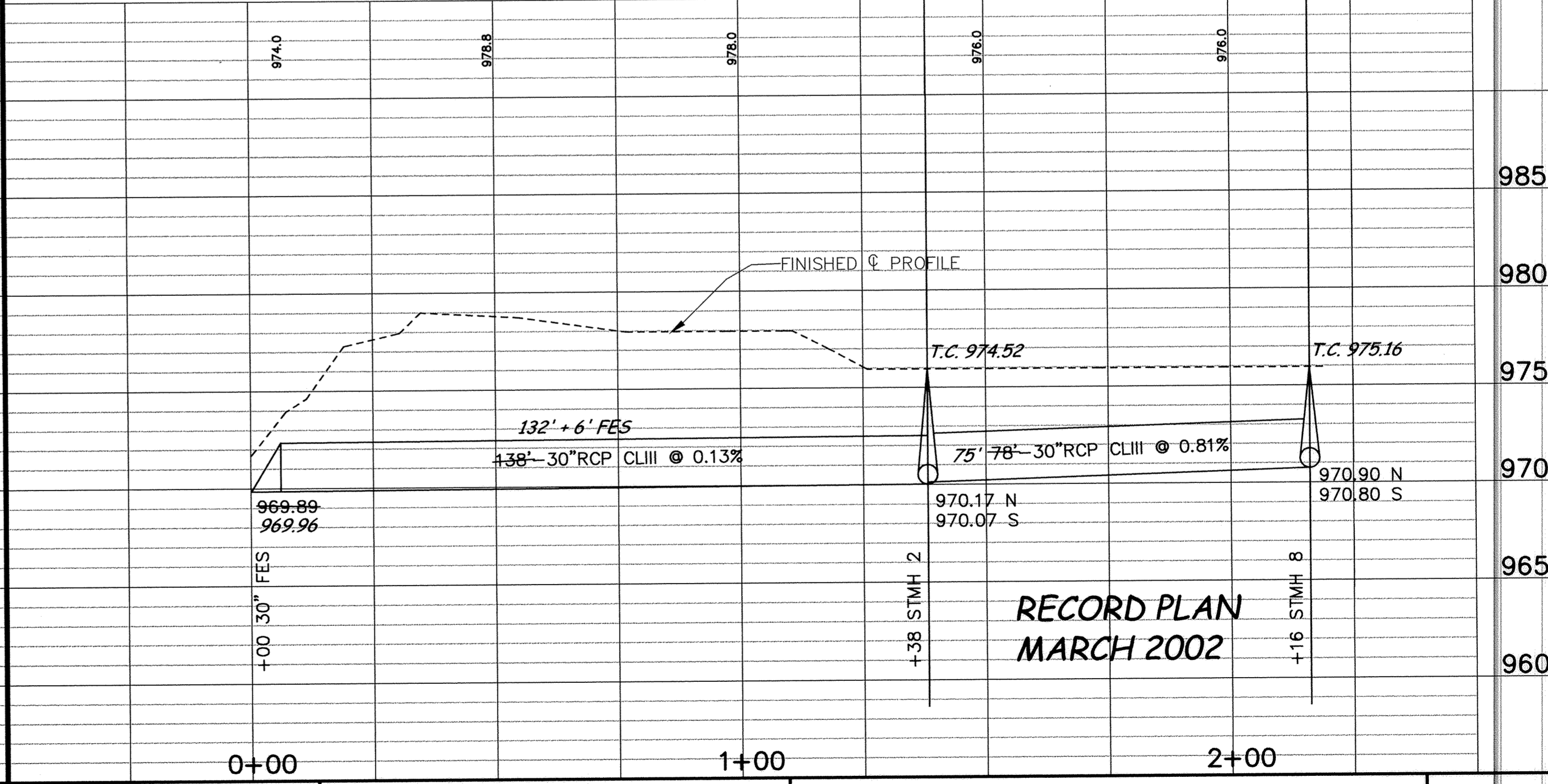
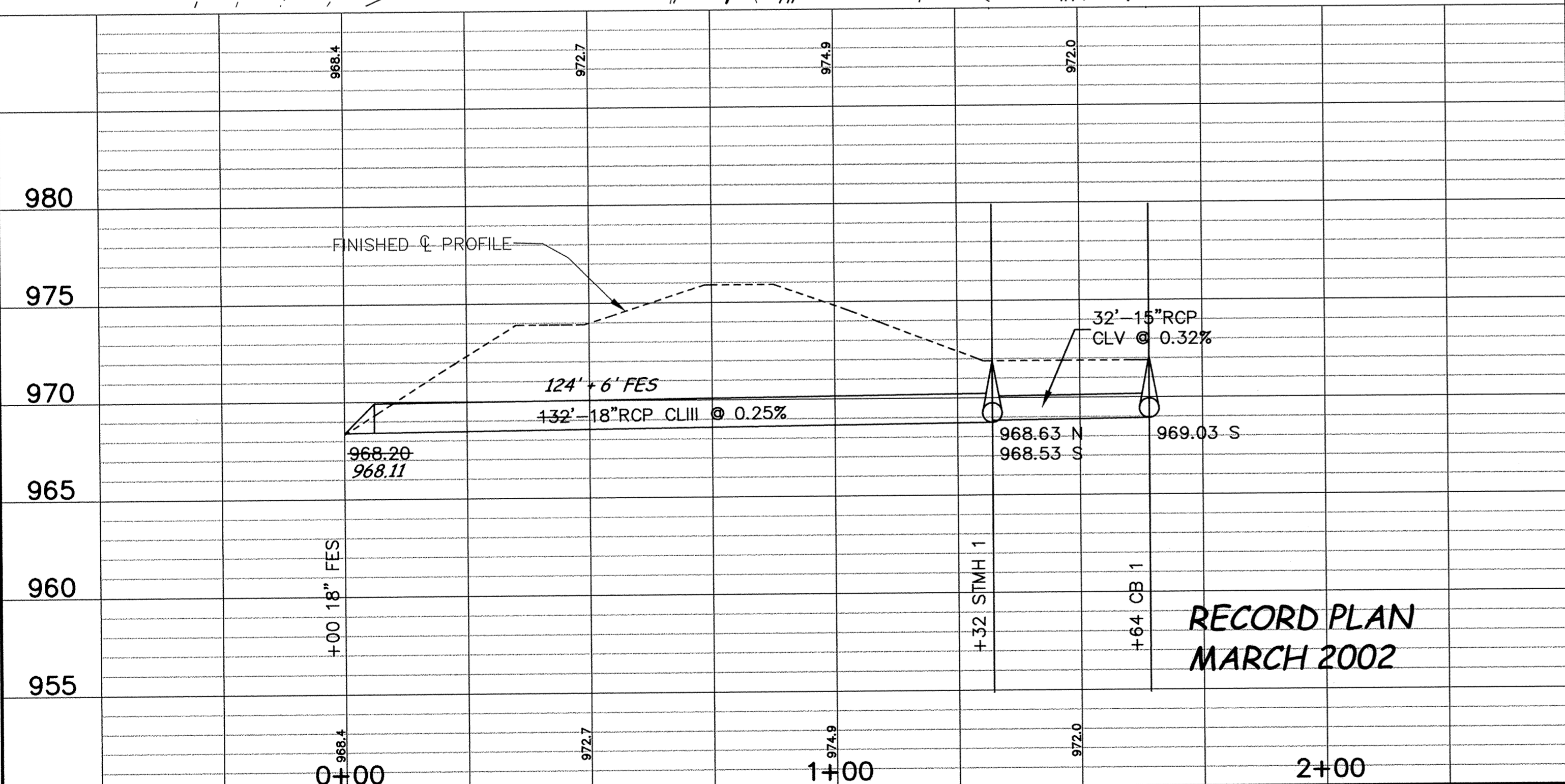
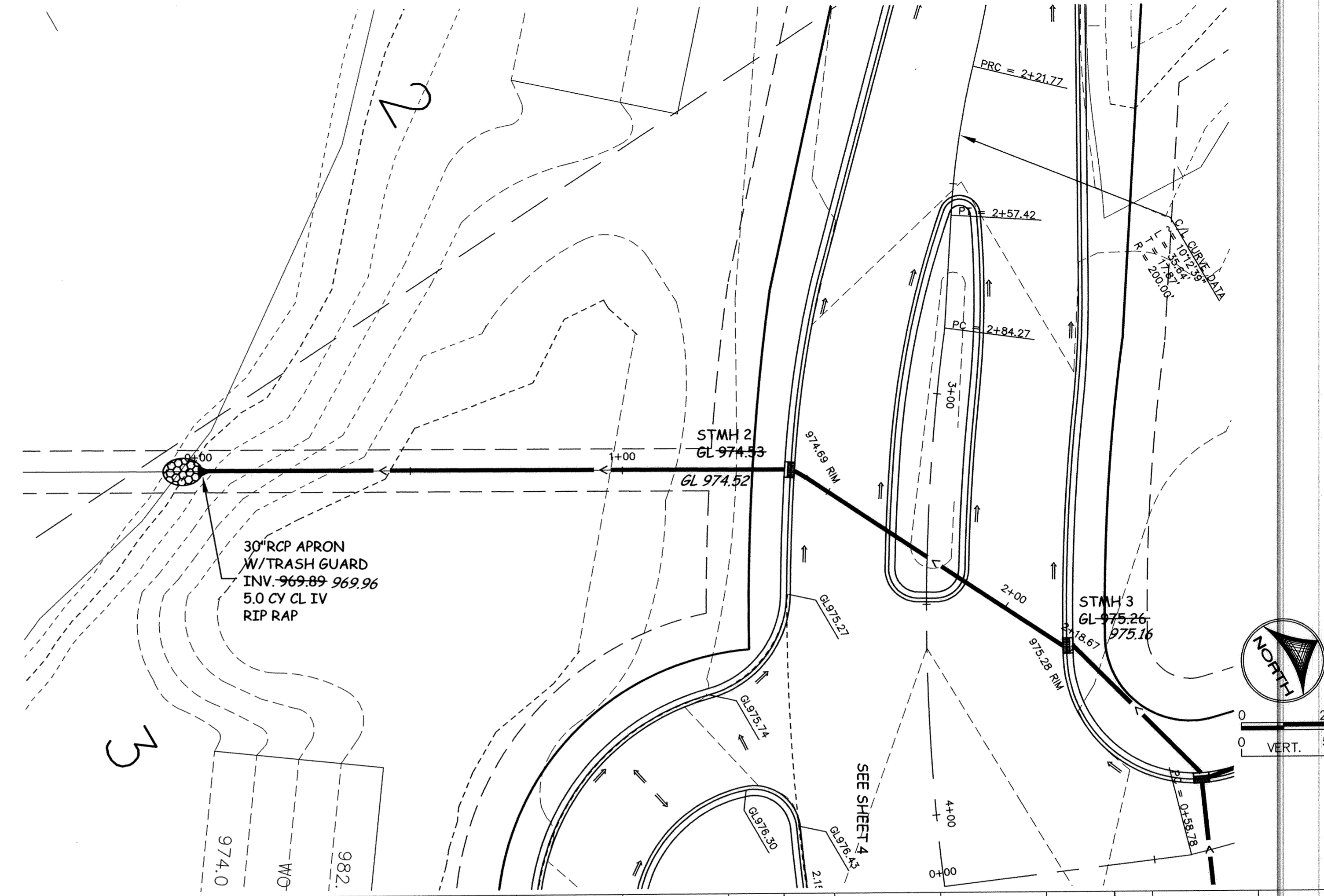
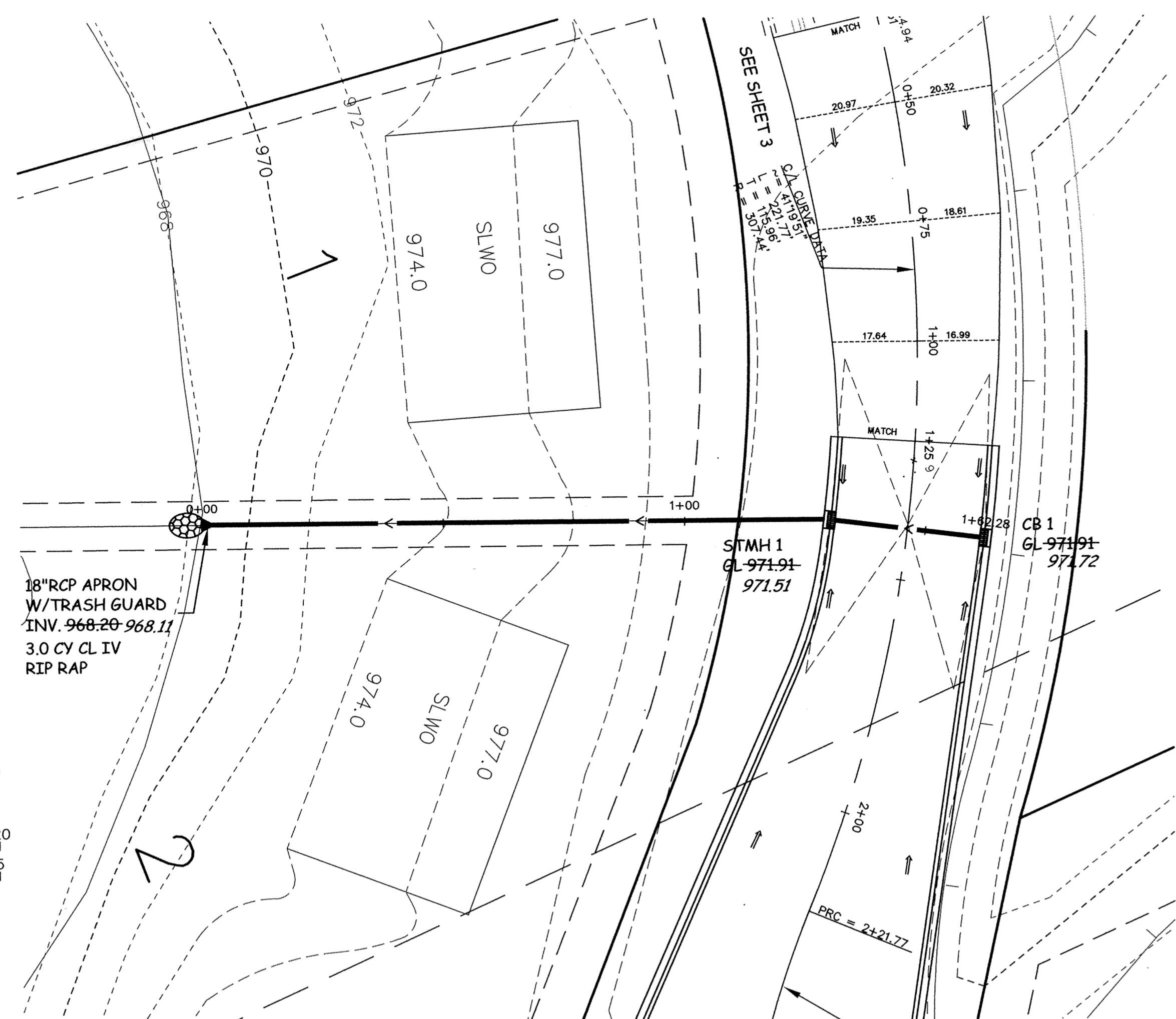


STORM SEWER PROFILES



DESIGNED BY: DESIGNED_BY DRAWN BY: DRAWN_BY
 APPROVED BY: APPROVED_BY JOB NUMBER 809781J
 CAD DATE: April 18, 2002 10:14:25 a.m.
 CAD FILE: 811380\asbuilts\811380-P5.DWG

I HEREBY CERTIFY THAT THIS PLAN, SPECIFICATION,
 OR REPORT WAS PREPARED BY ME OR UNDER MY DIRECT
 SUPERVISION AND THAT I AM A DULY REGISTERED
 PROFESSIONAL ENGINEER UNDER THE LAWS OF THE
 STATE OF MINNESOTA.
 DATE _____ REG. NO. _____

NO.	DATE	BY	REVISION DESCRIPTION
1	10/11/2000	EY	REVISED STORM SEWER


Howard R. Green Company
 CONSULTING ENGINEERS
 1326 ENERGY PARK DRIVE
 ST. PAUL, MINNESOTA 55108
 (651) 644-4389

CITY OF ELK RIVER
 THE WOODS OF HILLSIDE II
 STREET AND UTILITY IMPROVEMENTS

STORM SEWER PROFILES

SHEET NO.
 7
 OF
 11

DRAWING NUMBER
 WOODS2.00
 7

DRAWING NUMBER
 WOODS2.00
 7

DRAWING NUMBER
 WOODS2.00
 7

SAVED PRODUCTS - NEW HOPE, MINNESOTA
 REVISION BY PART NUMBER 8092
 REVISION BY PART NUMBER 8092