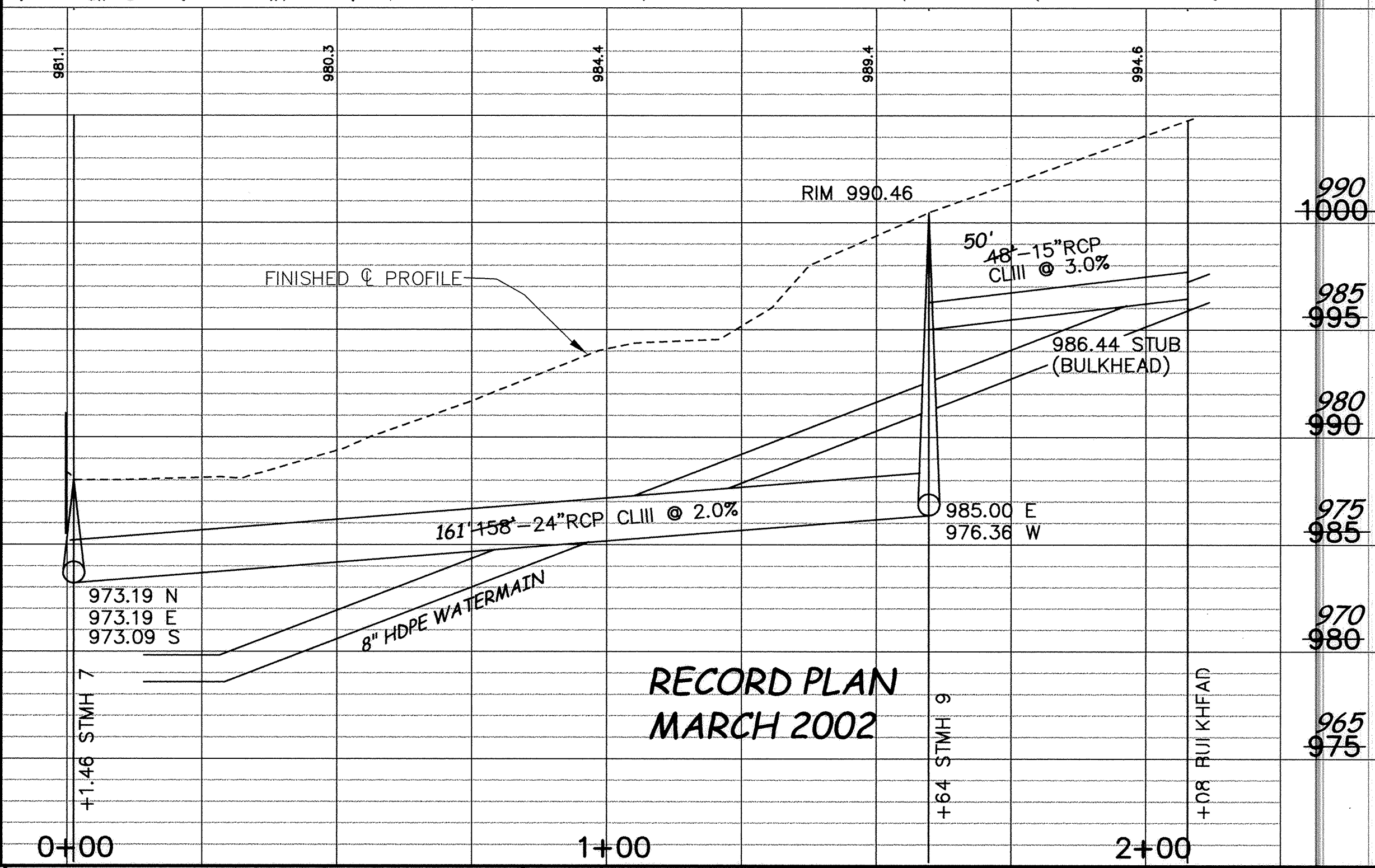
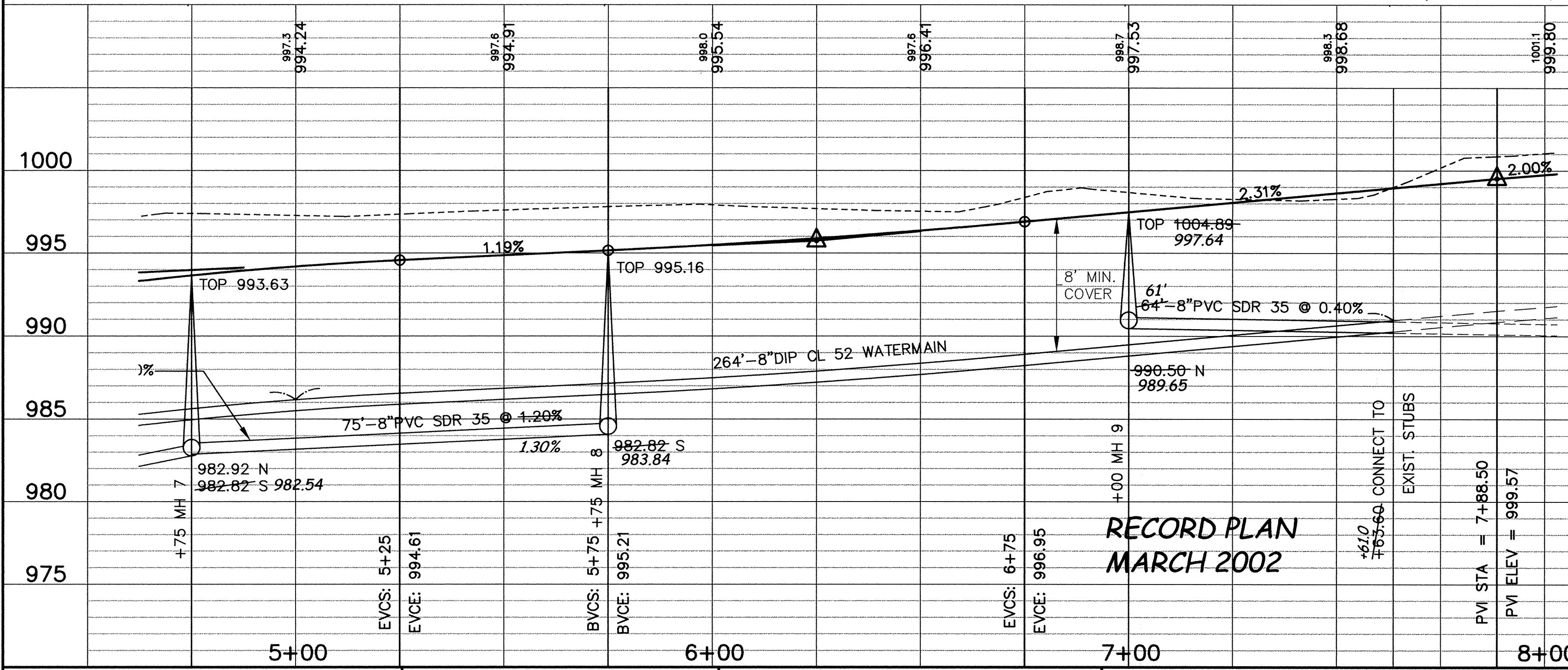
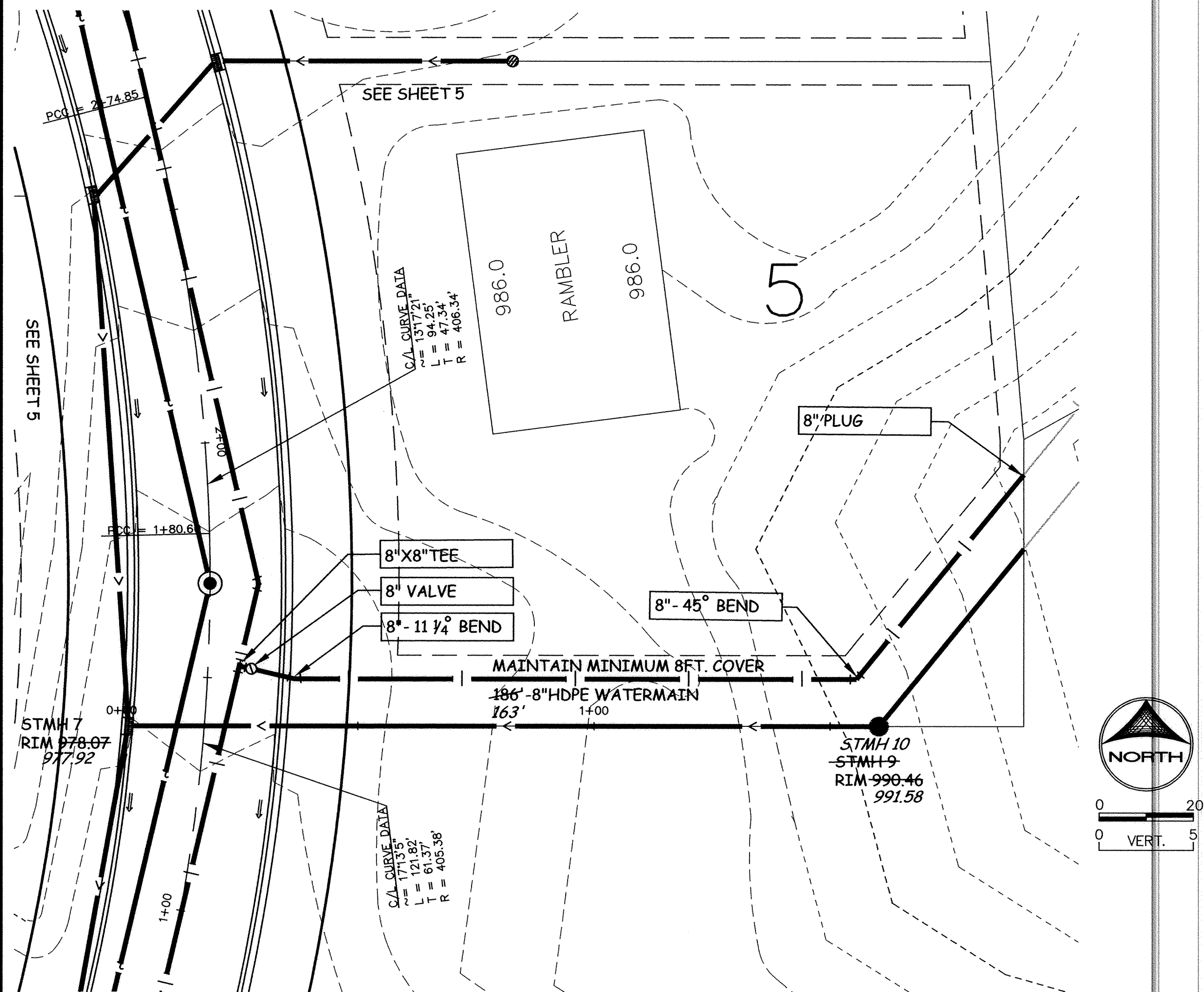
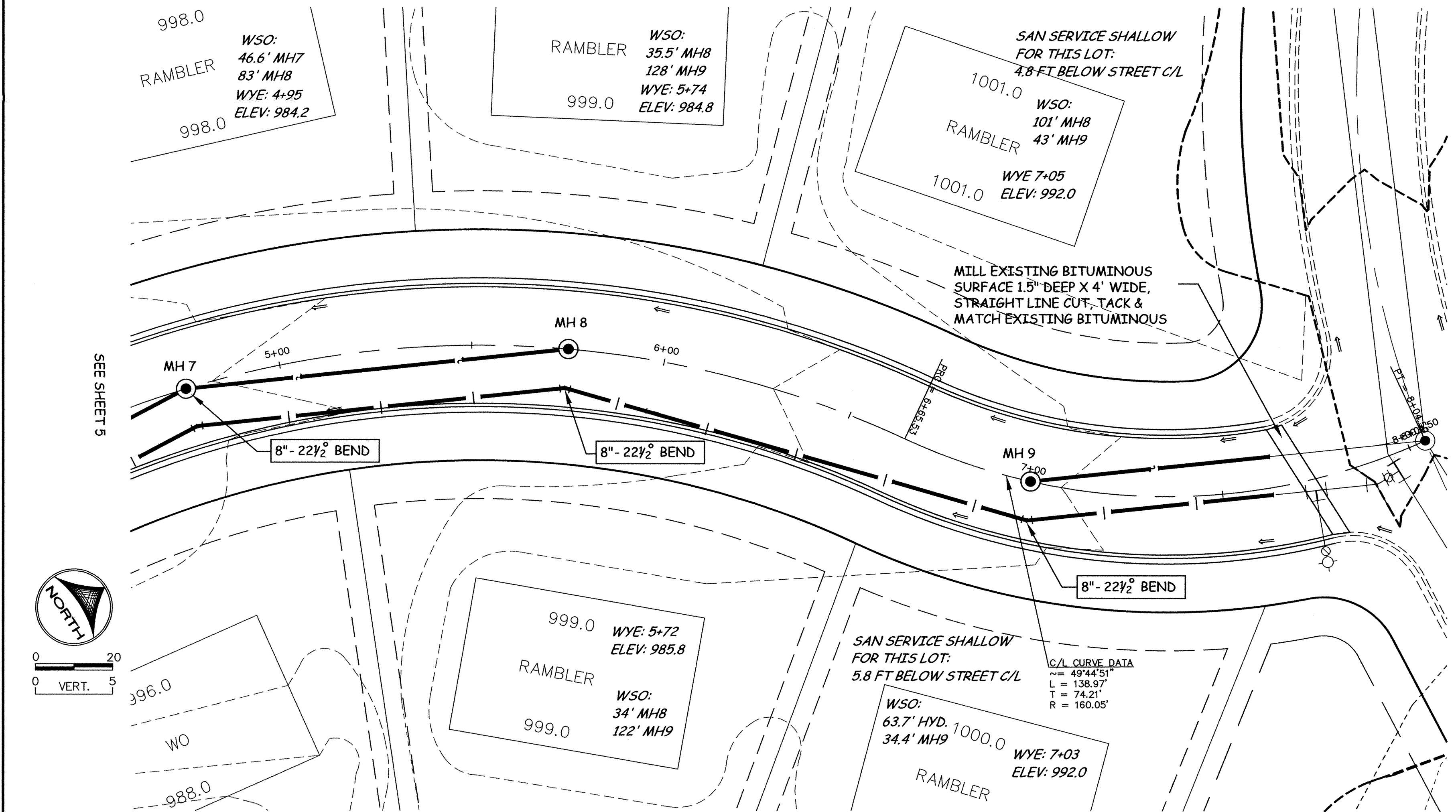


ZANE AVENUE



DESIGNED BY: DRAWN BY:
 APPROVED BY: JOB NUMBER 809781J
 CAD DATE: April 18, 2002 10:02:49 a.m.
 CAD FILE: 811380\osbuilts\811380-P4.DWG

I HEREBY CERTIFY THAT THIS PLAN, SPECIFICATION, OR REPORT WAS PREPARED BY ME OR UNDER MY DIRECT SUPERVISION AND THAT I AM A DULY REGISTERED PROFESSIONAL ENGINEER UNDER THE LAWS OF THE STATE OF MINNESOTA.
 DATE: REG. NO.

NO.	DATE	BY	REVISION DESCRIPTION
1	10/11/2000	EY	REVISED STORM SEWER/WATERMAIN

1326 ENERGY PARK DRIVE
 ST. PAUL, MINNESOTA 55108
 (651) 644-4389

Howard R. Green Company
 CONSULTING ENGINEERS

CITY OF ELK RIVER
 THE WOODS OF HILLSIDE II
 STREET AND UTILITY IMPROVEMENTS

ZANE AVENUE
 PLAN AND PROFILE
 5+00 TO 10+00

SHEET NO.
6
 OF
11

DRAWING NUMBER
 WOODS2.00
 SHEET NO.
 6 OF 11
 SAFCO PRODUCTS • NEW HARBOR, MINNESOTA
 PRODUCT # 1991 NUMBER 0032
 SAFCO PRODUCTS • NEW HARBOR, MINNESOTA
 PRODUCT # 1991 NUMBER 0032
 SAFCO PRODUCTS • NEW HARBOR, MINNESOTA
 PRODUCT # 1991 NUMBER 0032