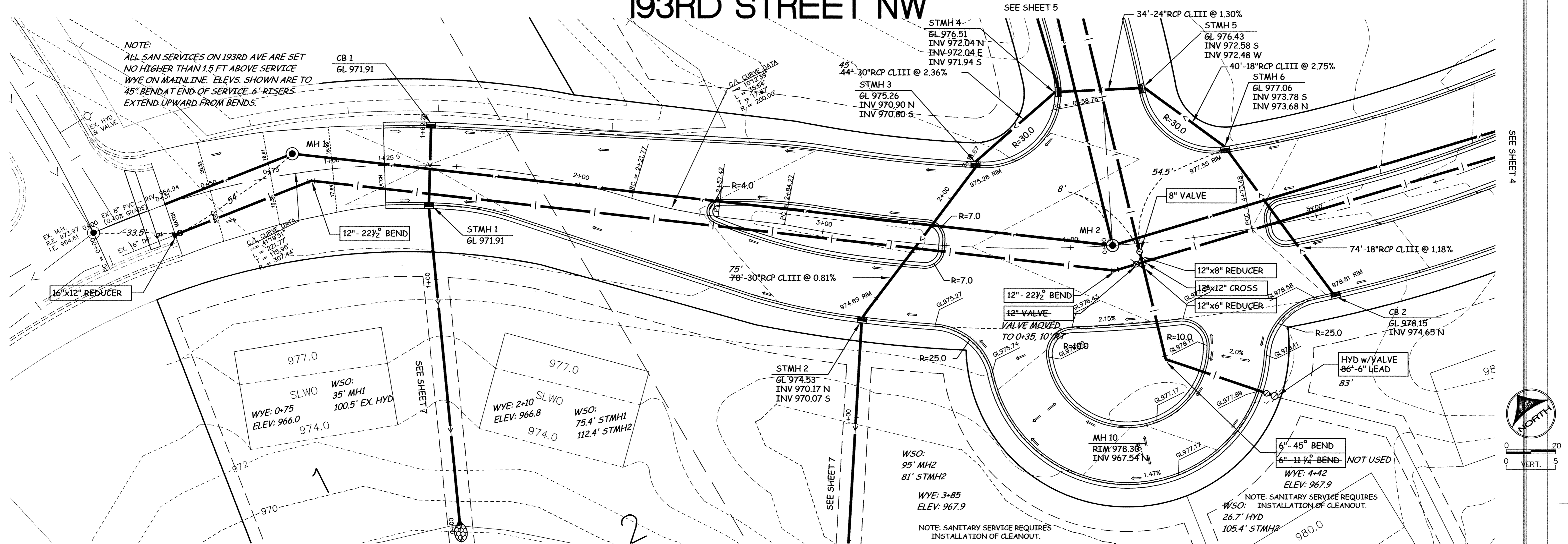


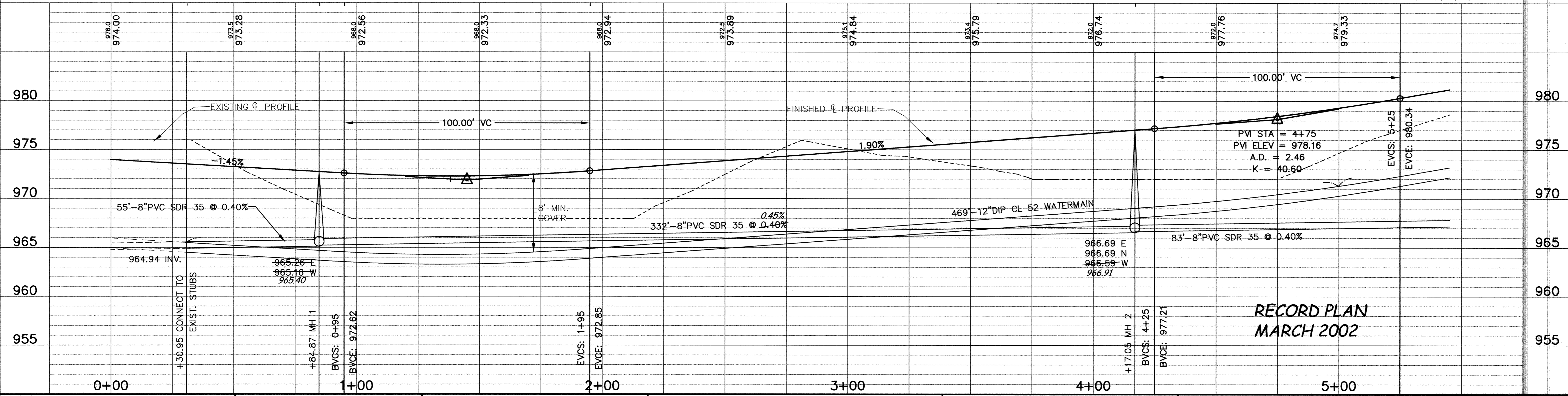
193RD STREET NW



NOTE:
ALL SAN SERVICES ON 193RD AVE ARE SET
NO HIGHER THAN 1.5 FT ABOVE SERVICE
WYE ON MAINLINE. ELEV. SHOWN ARE TO
45° BEND AT END OF SERVICE. 6" RISERS
EXTEND UPWARD FROM BENDS.

NOTE: SANITARY SERVICE REQUIRES
INSTALLATION OF CLEANOUT.
WSO: 105.4' STMH2

NOTE: SANITARY SERVICE REQUIRES
INSTALLATION OF CLEANOUT.



**RECORD PLAN
MARCH 2002**

DESIGNED BY: DESIGNED_BY DRAWN BY: DRAWN_BY
APPROVED BY: APPROVED_BY JOB NUMBER 809781J
CAD DATE: April 18, 2002 9:42:55 a.m.
CAD FILE: 811380\asbuilts\811380-P1.DWG

I HEREBY CERTIFY THAT THIS PLAN, SPECIFICATION,
OR REPORT WAS PREPARED BY ME OR UNDER MY DIRECT
SUPERVISION AND THAT I AM A DULY REGISTERED
PROFESSIONAL ENGINEER UNDER THE LAWS OF THE
STATE OF MINNESOTA.
DATE _____ REG. NO. _____

NO.	DATE	BY	REVISION DESCRIPTION
1	10/11/2000	EY	REVISED STORM SEWER

Howard R. Green Company
CONSULTING ENGINEERS

1326 ENERGY PARK DRIVE
ST. PAUL, MINNESOTA 55108
(651) 644-4389

**CITY OF ELK RIVER
THE WOODS OF HILLSIDE II
STREET AND UTILITY IMPROVEMENTS**

**193RD STREET NW
PLAN AND PROFILE**

0+00 TO 5+00

SHEET NO.
3
OF
11

DRAWING NUMBER
WOODS2.00
3

DRAWING NUMBER
WOODS2.00
3

DRAWING NUMBER
WOODS2.00
3

DRAWING NUMBER
WOODS2.00
3