

SAICO PRODUCTS • NEW HAVEN, MINNESOTA  
RENDERED BY PART NUMBER 8832  
REVISION BASE OF PART NUMBER 8832

# DEVELOPMENT PLAN THE WOODS AT HILLSIDE THIRD ADDITION

CITY OF ELK RIVER, MN,  
SHERBURNE COUNTY, MN.

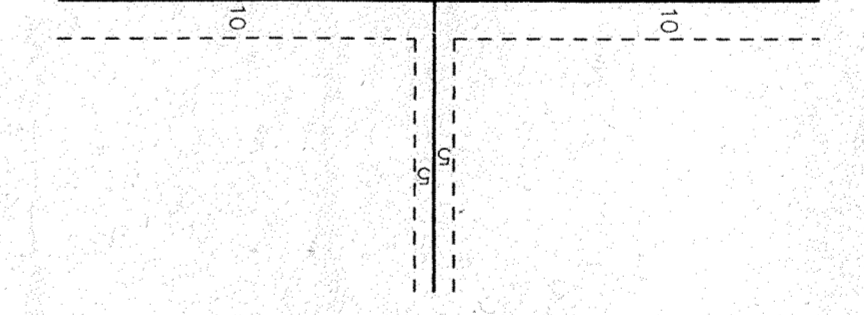
Approved  
2/27/03  
Howard E. Green Co.

= (Current boundary or survey)

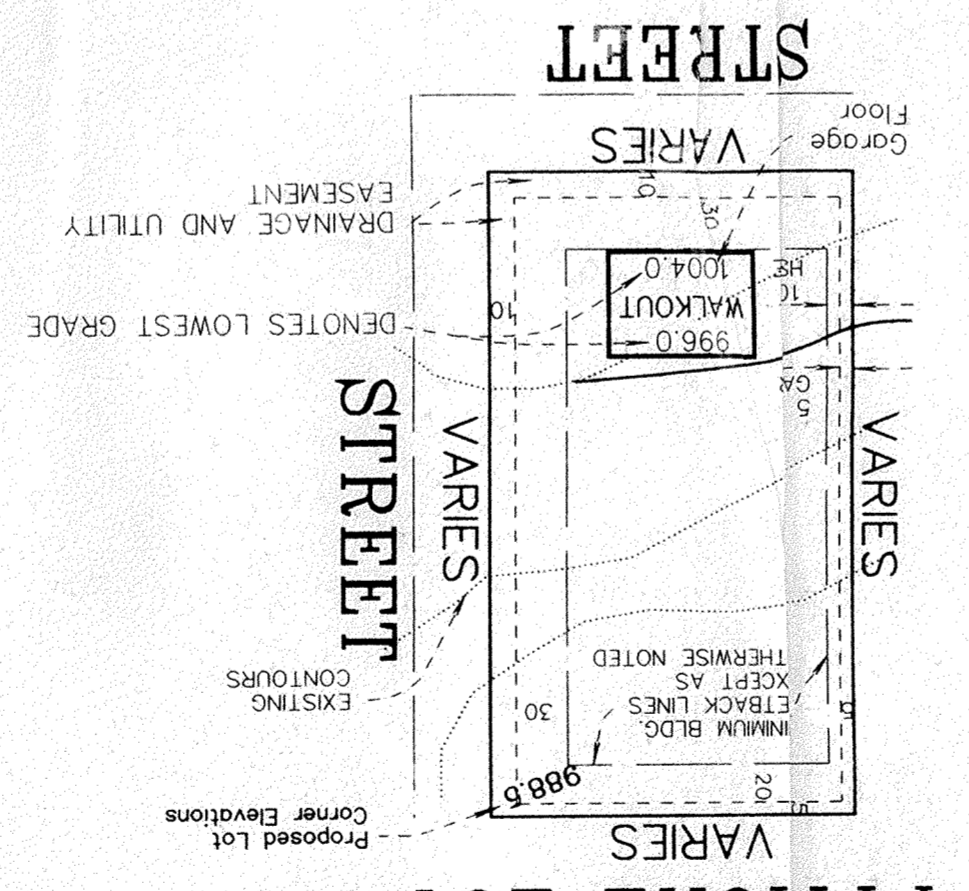
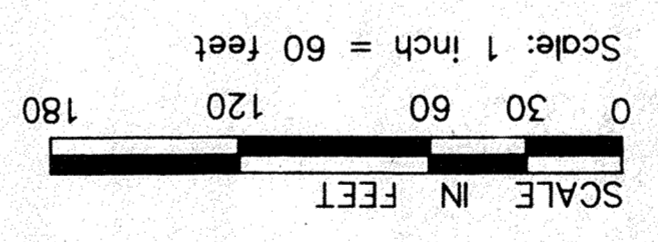
THE ORIENTATION OF THIS BEARING, THE SOUTH LINE TO BEAR NORTH 88°22'38"E EAST TO BEAR NORTH 88°22'38"E EAST

◦ DENOTES 1/2" x 14" IRON MONUMENT

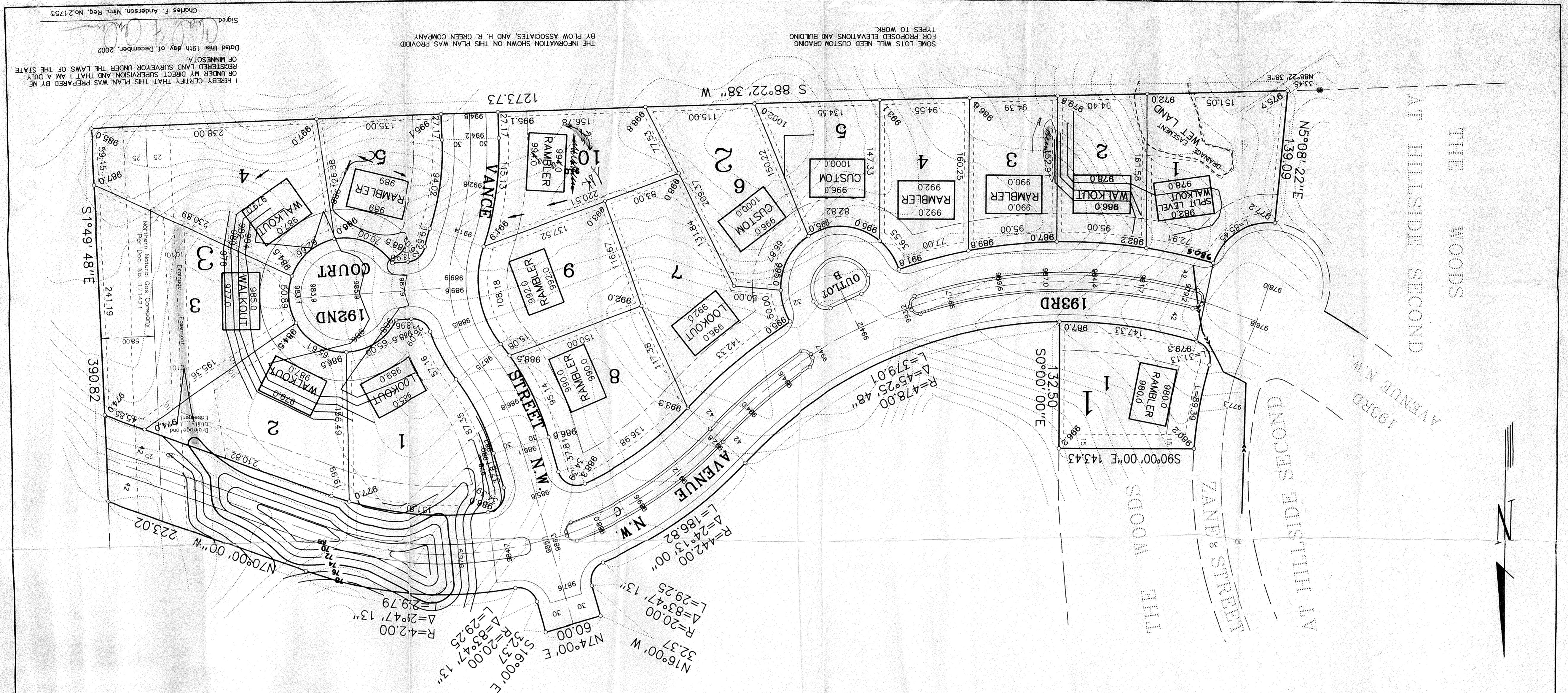
Drainage and Utility Easements are shown thus:



Being 5 feet in width, unless otherwise indicated, and adjoining lot lines, and 10 feet in width and adjoining street lines, as shown on the plat.



TYPICAL LOT



SOME LOTS WILL NEED CUSTOM GRADING FOR PROPOSED ELEVATIONS AND BUILDING TYPES TO WORK.  
THE INFORMATION SHOWN ON THIS PLAN WAS PROVIDED BY FLOW ASSOCIATES, AND H. R. GREEN COMPANY.  
Dated this 19th day of December, 2002  
Signed, Charles F. Anderson, Minn. Reg. No. 21753  
REGISTERED LAND SURVEYOR UNDER THE LAWS OF THE STATE OF MINNESOTA  
I HEREBY CERTIFY THAT THIS PLAN WAS PREPARED BY ME OR UNDER MY DIRECT SUPERVISION AND THAT I AM A DULY LICENSED SURVEYOR IN THE STATE OF MINNESOTA.

Feb 24, 2003