

PLAN HOLID CORPORATION • ENGINE CALIFORNIA REGISTERED PROFESSIONAL ENGINEER LICENSE NO. 13682 REVISION DATE OF PRINT ON THIS DATE

# THE WOODS AT HILLSIDE SECOND ADDITION DEVELOPMENT PLAN

## LOT SURVEYS COMPANY, INC.

LAND SURVEYORS

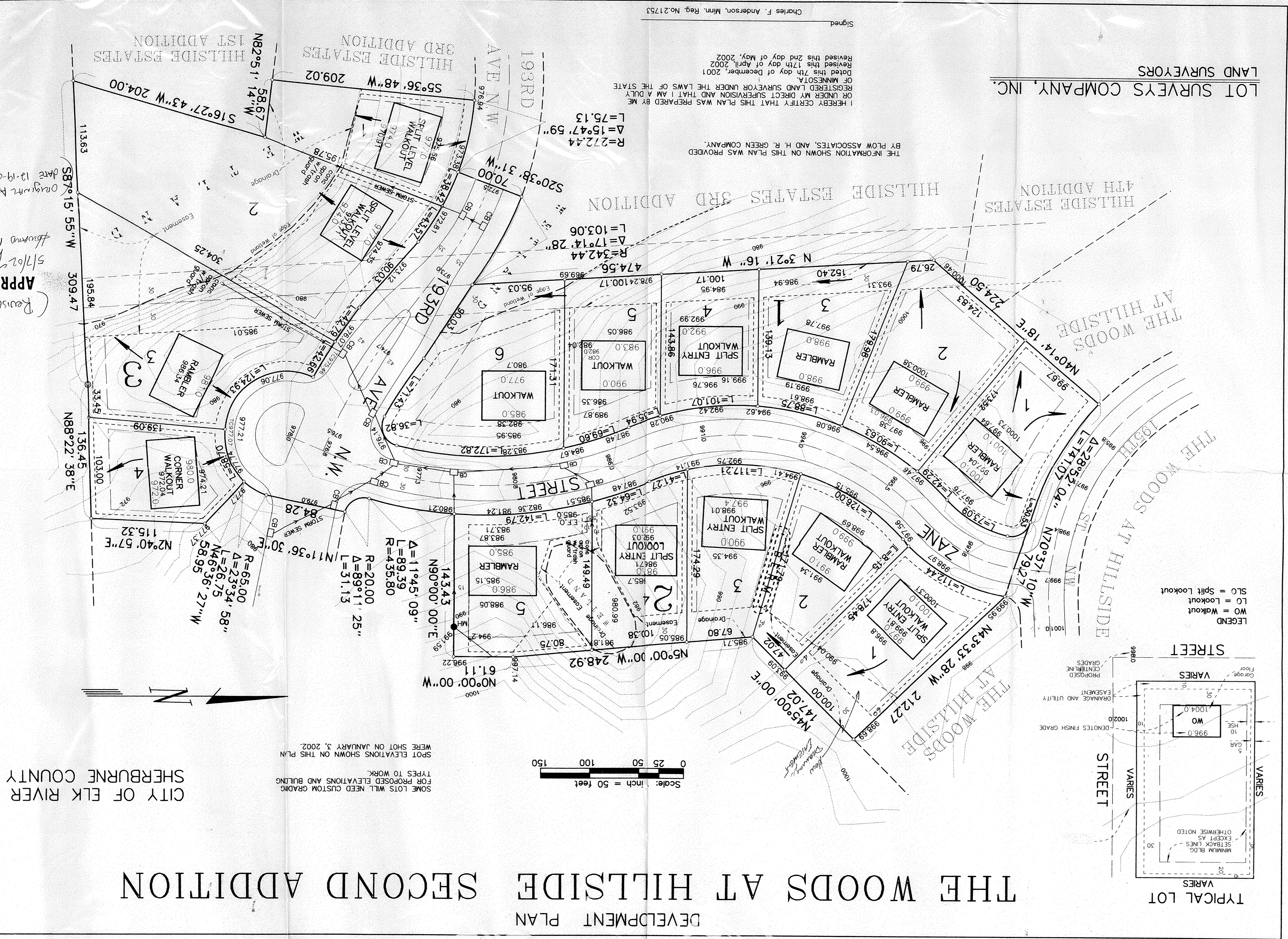
I HEREBY CERTIFY THAT THIS PLAN WAS PREPARED BY ME OR UNDER MY DIRECT SUPERVISION AND THAT I AM A DULY REGISTERED LAND SURVEYOR UNDER THE LAWS OF THE STATE OF MINNESOTA.

THE INFORMATION SHOWN ON THIS PLAN WAS PROVIDED BY FLOW ASSOCIATES, AND H. R. GREEN COMPANY.

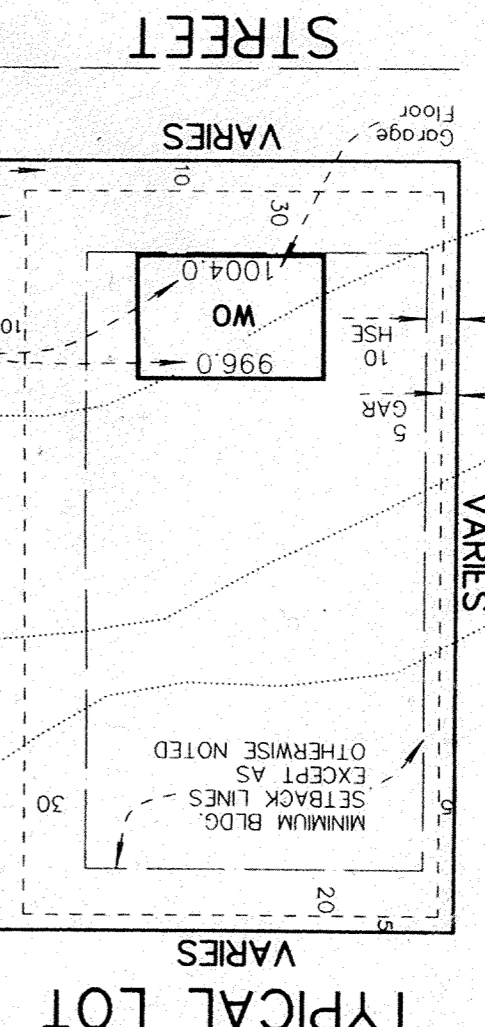
Dated this 7th day of December, 2001  
Revised this 17th day of April, 2002  
Revised this 2nd day of May, 2002

Signed

Charles F. Anderson, Minn. Reg. No. 21753



LEGEND  
 WO = Walkout  
 LO = Lookout  
 SLO = Split Lookout



SOME LOTS WILL NEED CUSTOM GRADING FOR PROPOSED ELEVATIONS AND BUILDING TYPES TO WORK.  
 SPOT ELEVATIONS SHOWN ON THIS PLAN WERE SHOT ON JANUARY 3, 2002.

CITY OF ELK RIVER  
 SHERBURNE COUNTY

APPROVED (Revised)  
 5/16/02  
 Approved  
 Original Approval date 12-19-01