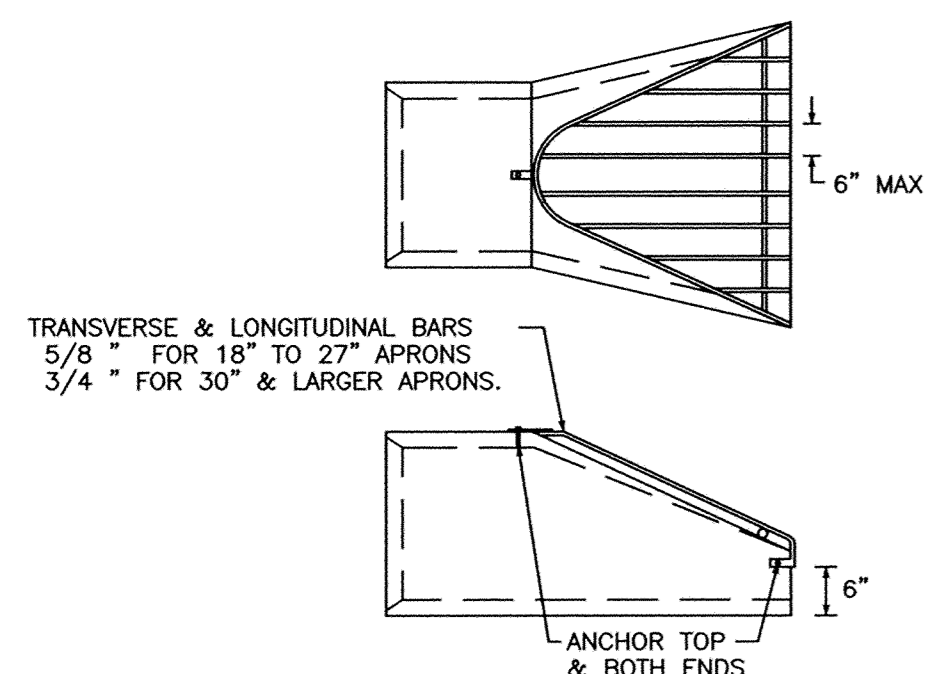


WEIR OVERFLOW DETAIL

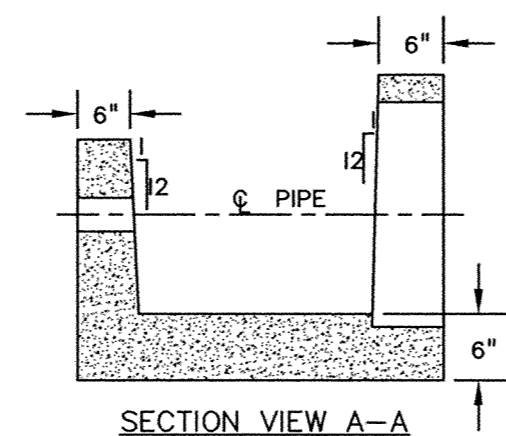
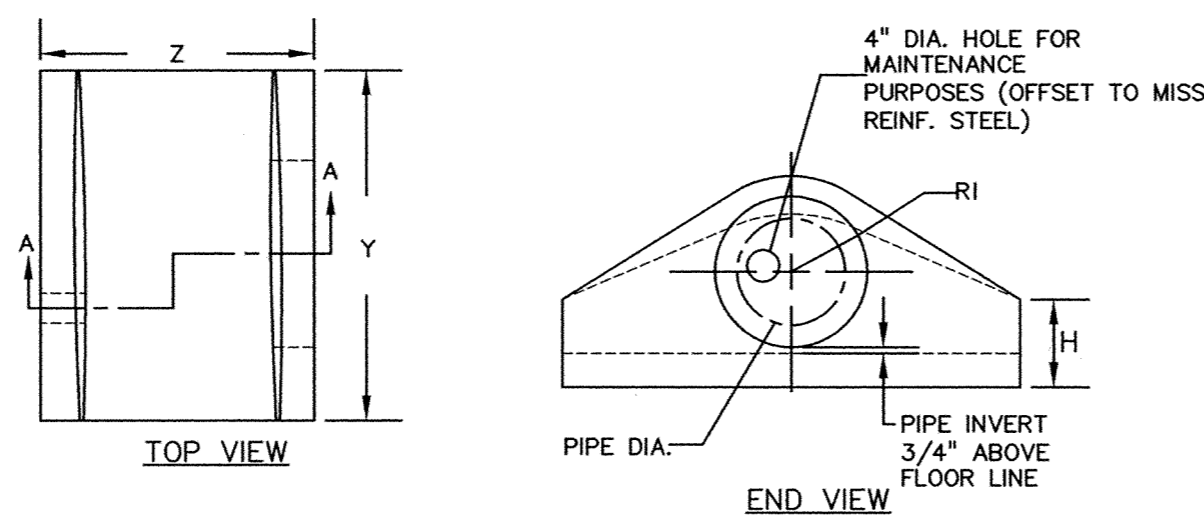
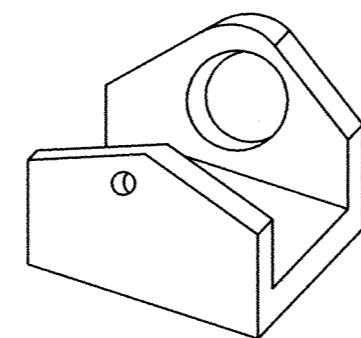


NOTE:

1. ALL TRASH GUARDS SHALL BE GALVANIZED AFTER FABRICATION PER MNDOT SPEC. 3392 & 3394.

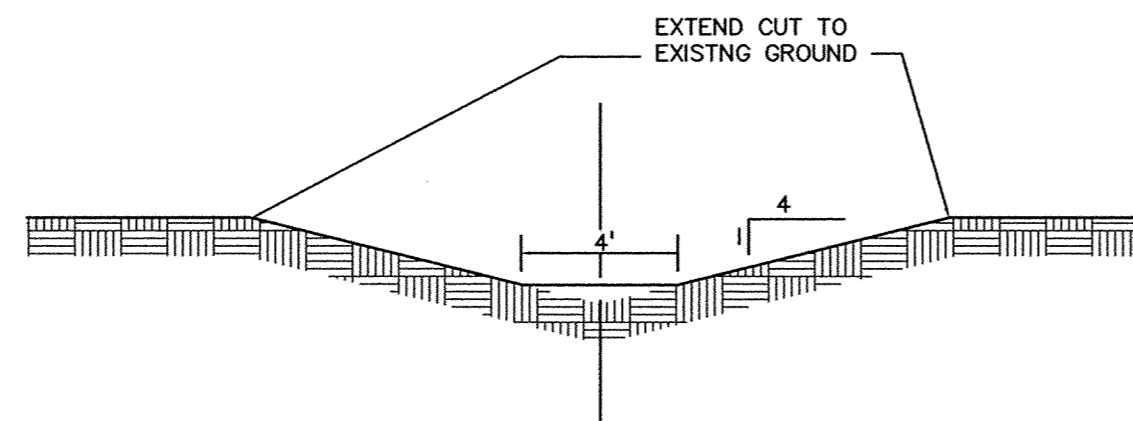
TRASH GUARD FOR END SECTION

RCP SIZE	OMP SIZE	R1	R2	H	Y	Z	WEIGHT (lbs.)
12"	15"	11 3/4"	7 1/2"	14 1/4"	4'-4"	3'-6"	1850
15"	18"	13 3/8"	9"	15 3/4"	5'-0"	4'-3"	2650
18"	24"	16 7/8"	12"	18 3/4"	6'-3"	5'-0"	4100

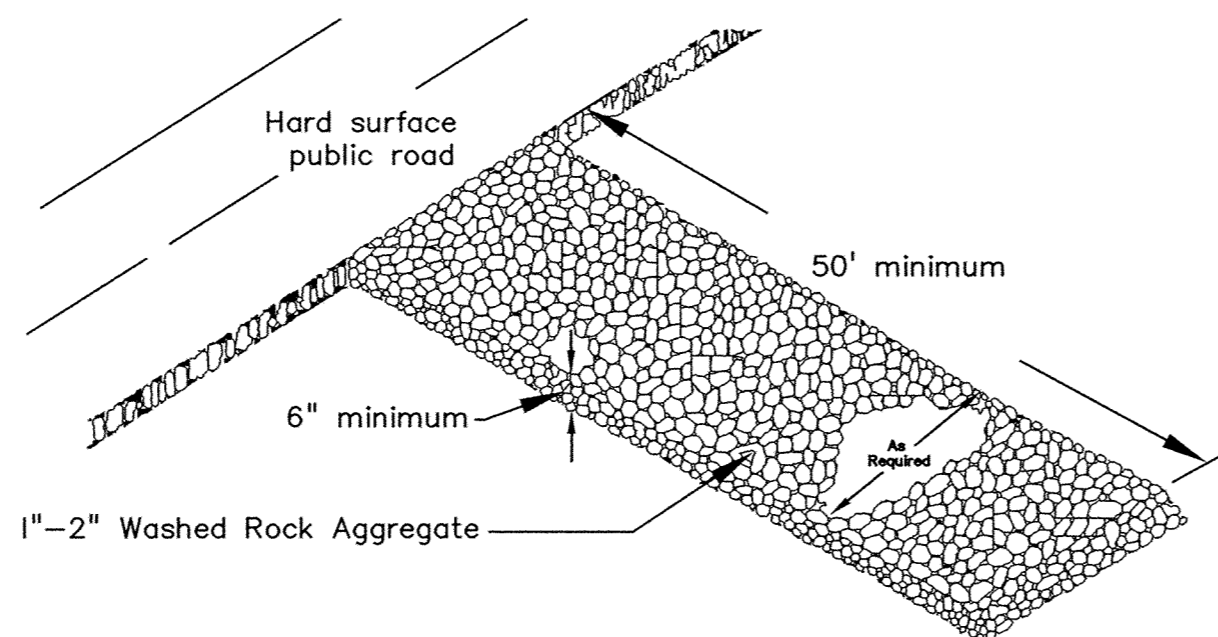


SURGE BASIN

NOTE: STABILIZE SURFACE OF SWALE IMMEDIATELY UPON COMPLETION. MAINTAIN SURFACE UNTIL PERMANENT VEGETATION IS ESTABLISHED.



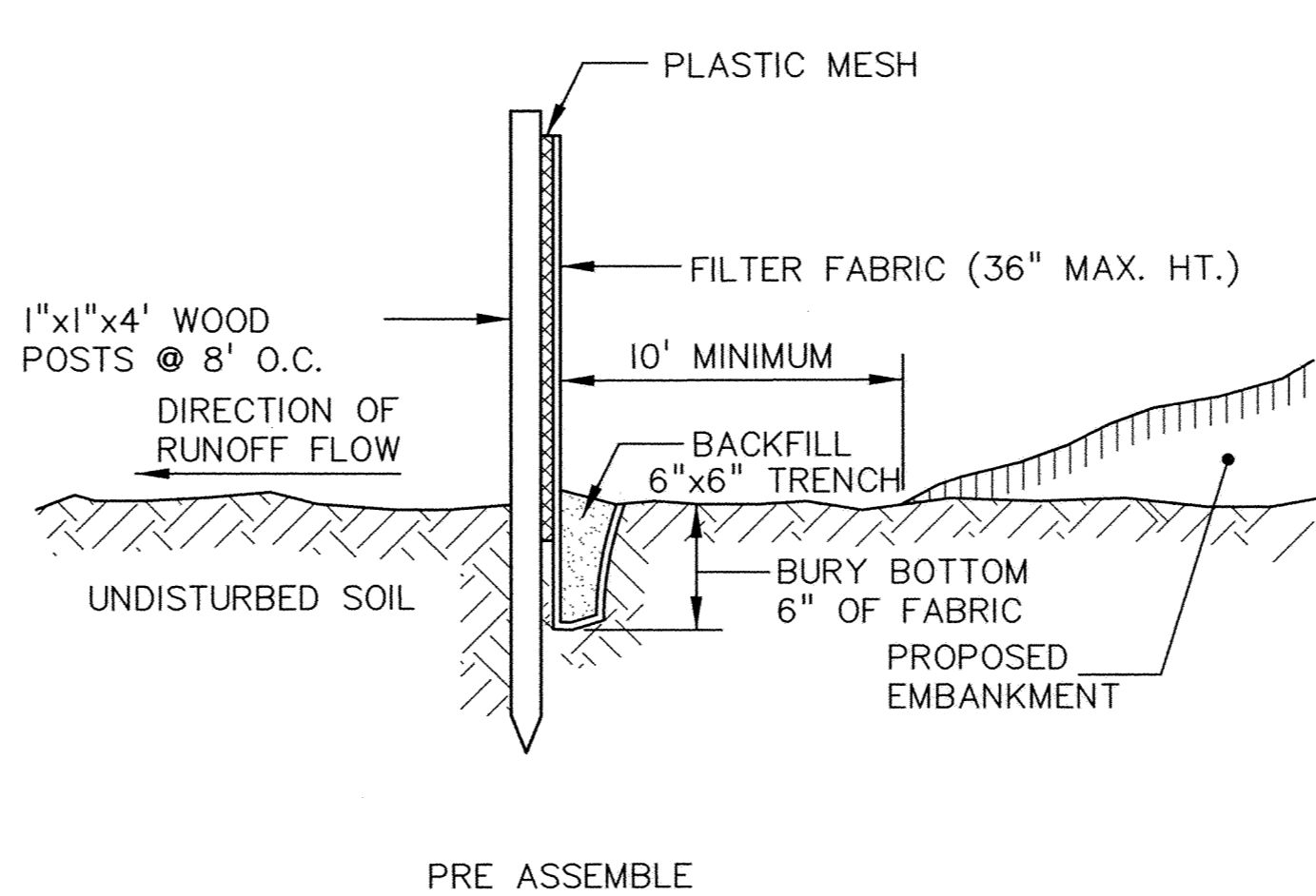
TYPICAL SWALE



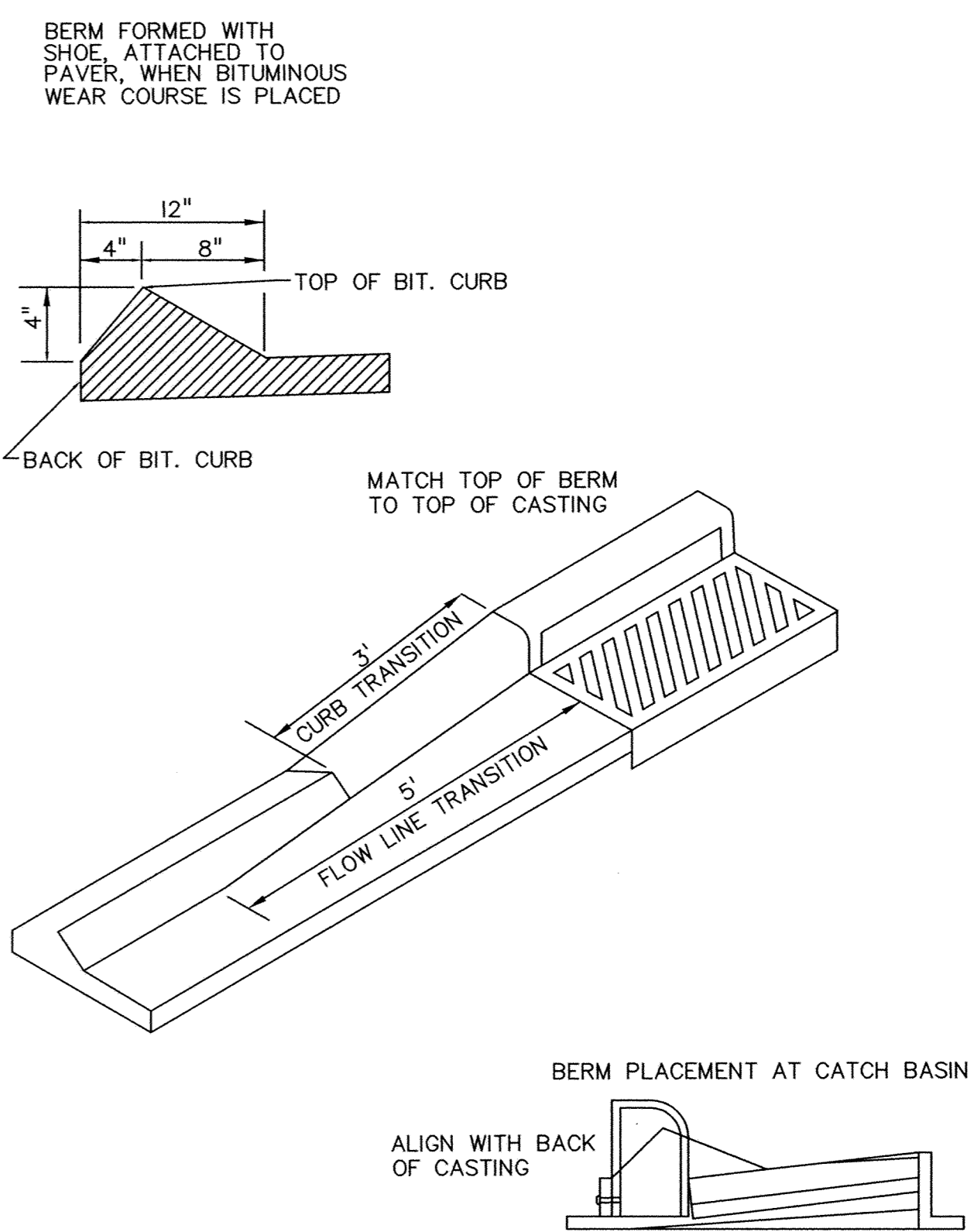
TEMPORARY ROCK CONSTRUCTION ENTRANCE

RECORD DRAWING

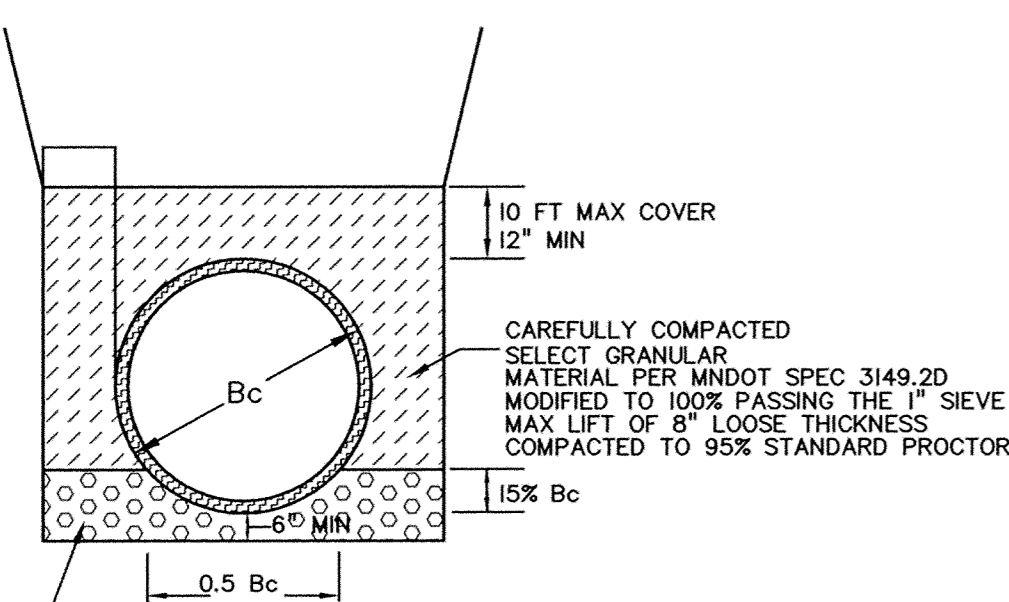
RECORD DRAWING
 MEASURED BY: LH @ BPA
 INSPECTED BY: R.N. @ H.R. GREEN
 DATE 6/02
 DRAWN BY: CCO, GB, PG @ BPA



SILT FENCE



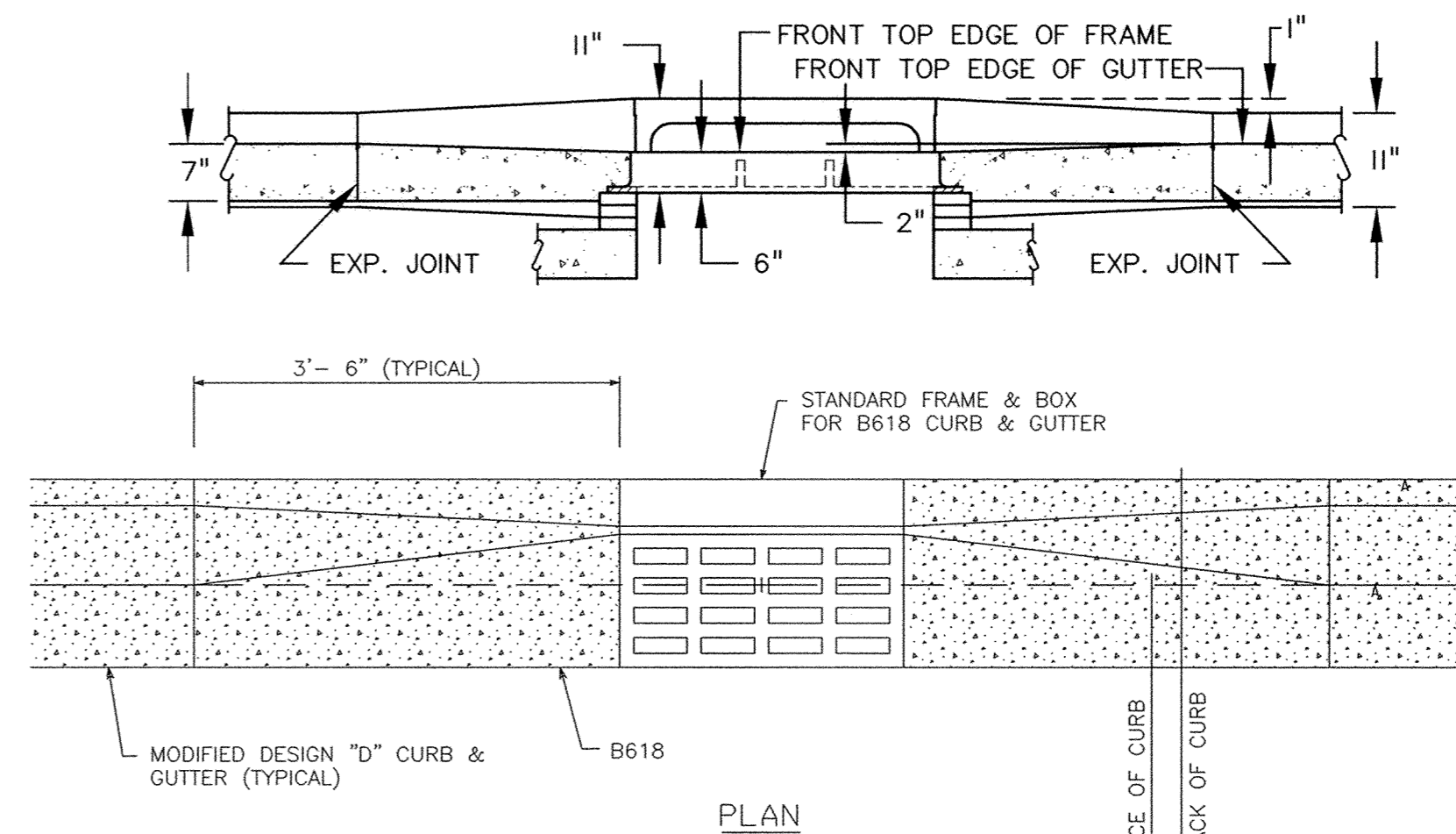
INTEGRAL BITUMINOUS BERM



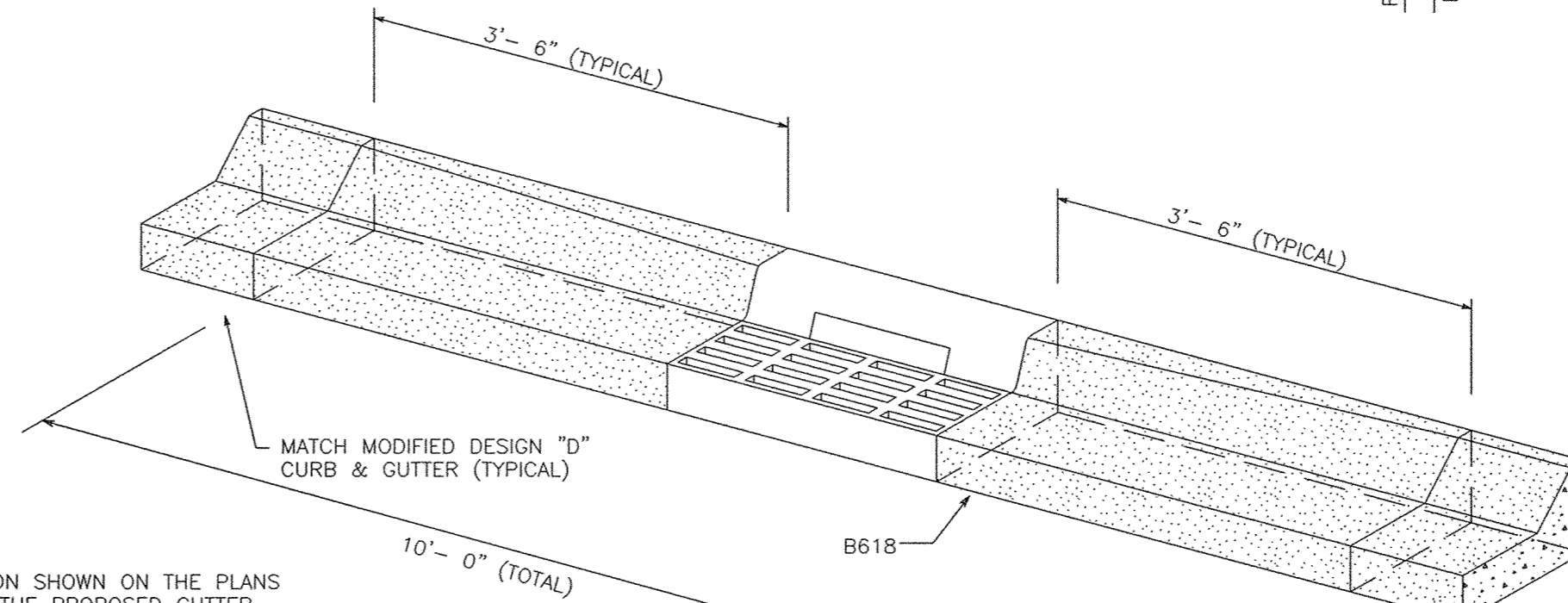
CLASS B BEDDING

NOTE:
 THE ZONE IMMEDIATELY BENEATH THE PIPE SHALL BE COMPACTED SUFFICIENTLY TO PRODUCE A UNIFORM SUPPORT

DUAL WALL PIPE BEDDING



PLAN



NOTE:

STORM SEWER TOP OF CASTING ELEVATION SHOWN ON THE PLANS INCLUDES A 1 INCH DEPRESSION FROM THE PROPOSED GUTTER GRADE. THE CONCRETE CURB SHOULD BE TRANSITIONED FROM THE PROPOSED GUTTER GRADE TO THE CASTING ELEVATION 5 FEET ON EACH SIDE OF THE CENTER OF THE CASTING.

CONCRETE CURB & GUTTER AT CATCH BASIN

REV. NO.	DATE	DESCRIPTION
1	6/24/02	CHANGES PER CITY ENGINEER
2	6/24/02	CHANGES PER CCM
3	8/6/02	27\"/>
4	8/7/02	ASBUILTS
5	1/31/05	UPDATED ASBUILTS

I hereby certify that this plan was prepared by me or under my direct supervision and that I am a duly Licensed Professional Engineer under the laws of the State of Minnesota.

Signed: *[Signature]* Reg. No. 19900
 Date: 3/1/05

DATE: 3/27/02
 DESIGN BY: JKB, PG, GB
 DRAWN BY: PG, GB, CCO
 CHECKED BY: CCO, JKB
 DWG FILE: 15_DETAILS
 FILE NO.: 101304.0

BOGART, PEDERSON & ASSOCIATES, INC.
 LAND SURVEYING ENGINEERING
 13076 FIRST STREET, BECKER, MN 55508-9322
 TEL: 763-262-8822 FAX: 763-262-8844

WINDSOR PARK 3RD ADD.
 CITY OF ELK RIVER, MN.
DYNAMICS DESIGN & LAND CO.